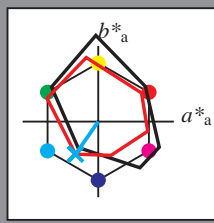


Immettere y uscita: Printer Reflective System FRS06a for relative CIELAB hue  $h_{ab,a,rel} = h_{ab}/360 = 235/360 = 0.65$

Dati del dispositivo (d) o colori elementari (e):

$HIC^*_d$   
codice di tonalità per i colori questa pagina:  
 $H^*_d = G50B_d$   
triangolo chiarezza  $T^*$



**LRS18a; dati atti CIELAB (a)**

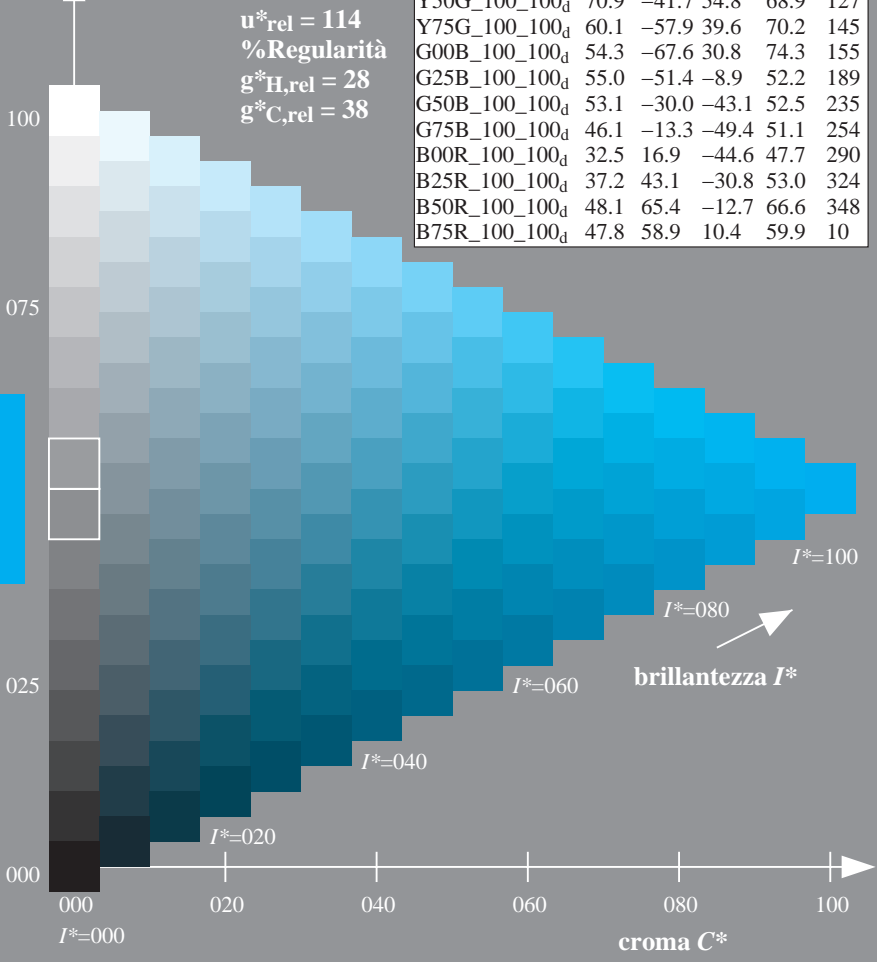
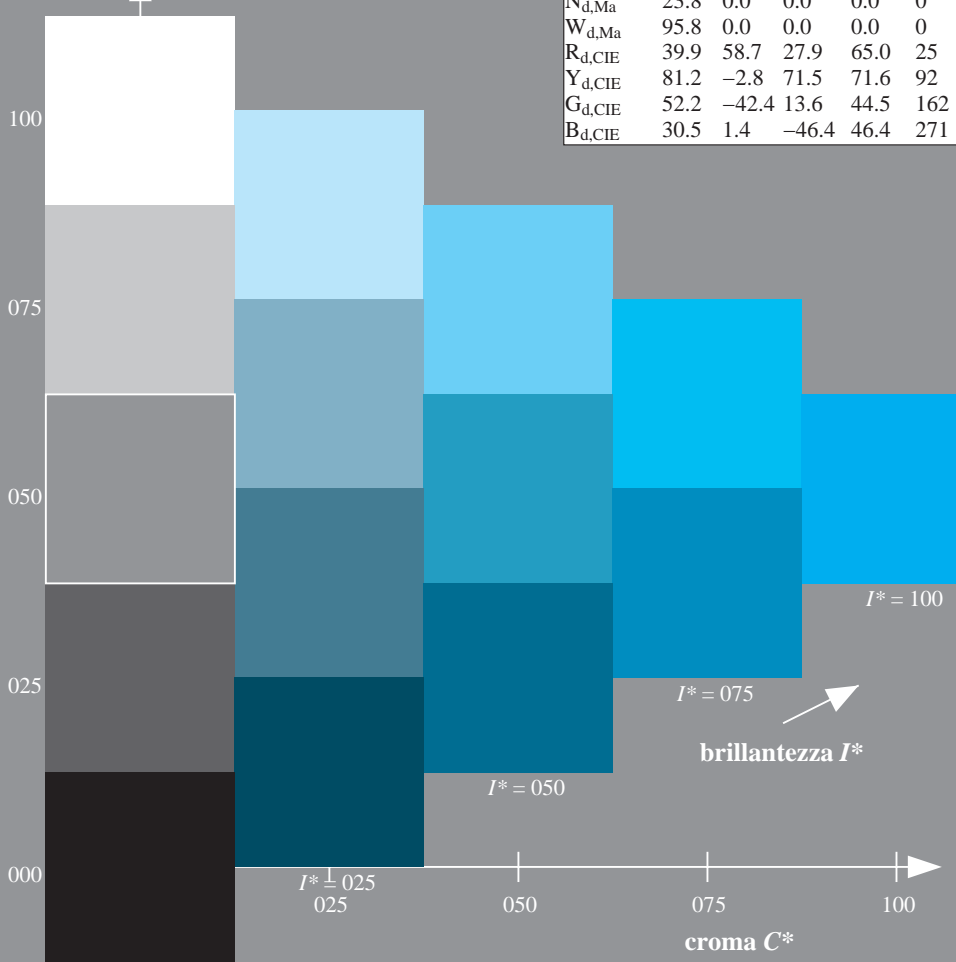
name	$L^*=L^*_a$	$a^*_a$	$b^*_a$	$C^*_{ab,a}$	$h^*_{ab,a}$
R <sub>d,Ma</sub>	47.5	57.2	37.8	68.6	33
Y <sub>d,Ma</sub>	91.5	-15.8	84.6	86.1	100
G <sub>d,Ma</sub>	54.3	-67.6	30.8	74.3	155
C <sub>d,Ma</sub>	53.1	-30.0	-43.1	52.5	235
B <sub>d,Ma</sub>	32.5	16.9	-44.6	47.7	290
M <sub>d,Ma</sub>	48.1	65.4	-12.7	66.6	348
N <sub>d,Ma</sub>	23.8	0.0	0.0	0.0	0
W <sub>d,Ma</sub>	95.8	0.0	0.0	0.0	0
R <sub>d,CIE</sub>	39.9	58.7	27.9	65.0	25
Y <sub>d,CIE</sub>	81.2	-2.8	71.5	71.6	92
G <sub>d,CIE</sub>	52.2	-42.4	13.6	44.5	162
B <sub>d,CIE</sub>	30.5	1.4	-46.4	46.4	271

Il dati per il massimo colore (Ma):

$LabCh^*_d, Ma: 53 -30 -43 52 235$   
 $HIC^*_d, Ma: G50B\_100\_100_d$   
 $rgbic^*_d, Ma:$   
0.0 1.0 1.0 1.0 1.0  
triangolo chiarezza  $T^*$

**LRS18a; dati atti CIELAB (a)**

$H^*_d$	$L^*=L^*_a$	$a^*_a$	$b^*_a$	$C^*_{ab,a}$	$h^*_{ab,a}$
R00Y_100_100 <sub>d</sub>	47.5	57.2	37.8	68.6	33
R25Y_100_100 <sub>d</sub>	57.4	43.5	54.5	69.7	51
R50Y_100_100 <sub>d</sub>	70.5	19.2	66.2	69.0	73
R75Y_100_100 <sub>d</sub>	83.5	-2.9	76.8	76.9	92
Y00G_100_100 <sub>d</sub>	91.5	-15.8	84.6	86.1	100
Y25G_100_100 <sub>d</sub>	90.4	-20.9	86.5	89.0	103
Y50G_100_100 <sub>d</sub>	70.9	-41.7	54.8	68.9	127
Y75G_100_100 <sub>d</sub>	60.1	-57.9	39.6	70.2	145
G00B_100_100 <sub>d</sub>	54.3	-67.6	30.8	74.3	155
G25B_100_100 <sub>d</sub>	55.0	-51.4	-8.9	52.2	189
G50B_100_100 <sub>d</sub>	53.1	-30.0	-43.1	52.5	235
G75B_100_100 <sub>d</sub>	46.1	-13.3	-49.4	51.1	254
B00R_100_100 <sub>d</sub>	32.5	16.9	-44.6	47.7	290
B25R_100_100 <sub>d</sub>	37.2	43.1	-30.8	53.0	324
B50R_100_100 <sub>d</sub>	48.1	65.4	-12.7	66.6	348
B75R_100_100 <sub>d</sub>	47.8	58.9	10.4	59.9	10



vedere dei file simili: <http://130.149.60.45/~farbmetrik/QI99/QI99.HTM>  
informazioni tecniche: <http://www.ps.bam.de> o <http://130.149.60.45/~farbmetrik>

TUB iscrizione: 20130201-QI99/QI99L0NP.PDF /.PS  
la domanda per la misura di uscita della stampante laser, separazione cmy6 (CMYK)  
TUB materiale: code=rhata

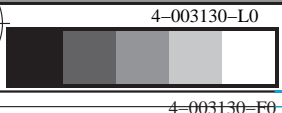


grafico TUB-QI99; codice di tinte:  $H^*_d=G50B_d$   
grafico conformemente a DIN 33872, 3D=0, de=0, cmyk

immettere:  $rgb/cmyk \rightarrow rgb_d$   
uscita: trasferire a  $cmyk_d$

