

Ein- und Ausgabe: Offset-Reflektiv-System ORS18a für relativen CIELAB-Buntton $h_{ab,a,rel} = h_{ab}/360 = 68/360 = 0.19$

$H^*_ = R50Y_$

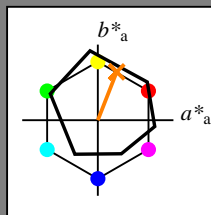
Daten für jede Geräte- (d) oder
 Elementarfarbe (e):

$HIC^*_$

Buntontext für die Farben
 dieser Seite:

$H^*_ = R50Y_$

Dreiecks-Helligkeit T^*



ORS18a; adaptierte CIELAB-Daten

Name	$L^*=L^*_a a^*_a$	b^*_a	$C^*_{ab,a}$	$h^*_{ab,a}$	
R _{-,Ma}	47.9	65.3	50.5	82.6	37
Y _{-,Ma}	90.3	-10.2	91.7	92.3	96
G _{-,Ma}	50.9	-62.8	34.9	71.9	150
C _{-,Ma}	58.6	-30.3	-45.0	54.2	236
B _{-,Ma}	25.7	31.0	-44.4	54.2	305
M _{-,Ma}	48.1	75.2	-8.3	75.7	353
N _{-,Ma}	18.0	0.0	0.0	0.0	0
W _{-,Ma}	95.4	0.0	0.0	0.0	0
R _{-,CIE}	39.9	58.7	27.9	65.0	25
Y _{-,CIE}	81.2	-2.8	71.5	71.6	92
G _{-,CIE}	52.2	-42.4	13.6	44.5	162
B _{-,CIE}	30.5	1.4	-46.4	46.4	271

Daten für Maximalfarbe (Ma):

$LabCh^*_{-,Ma}$: 68 25 63 68 68

$HIC^*_{-,Ma}$: R50Y_100_100_

$rgbic^*_{-,Ma}$:

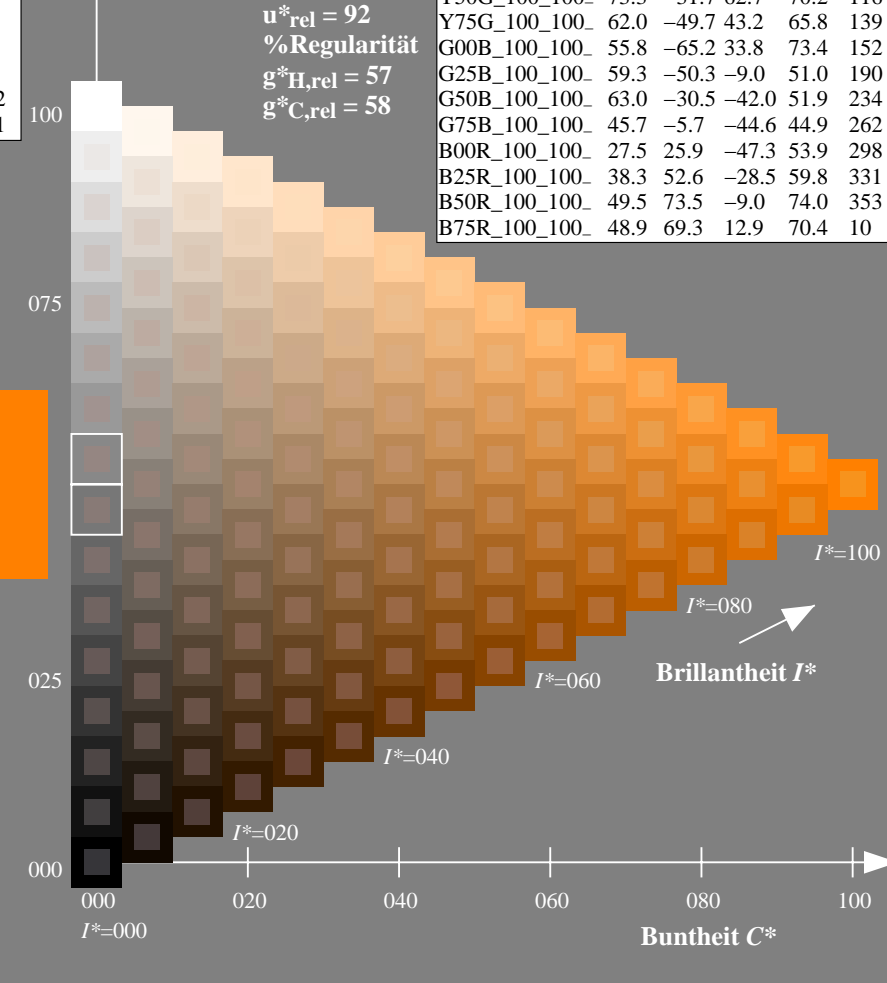
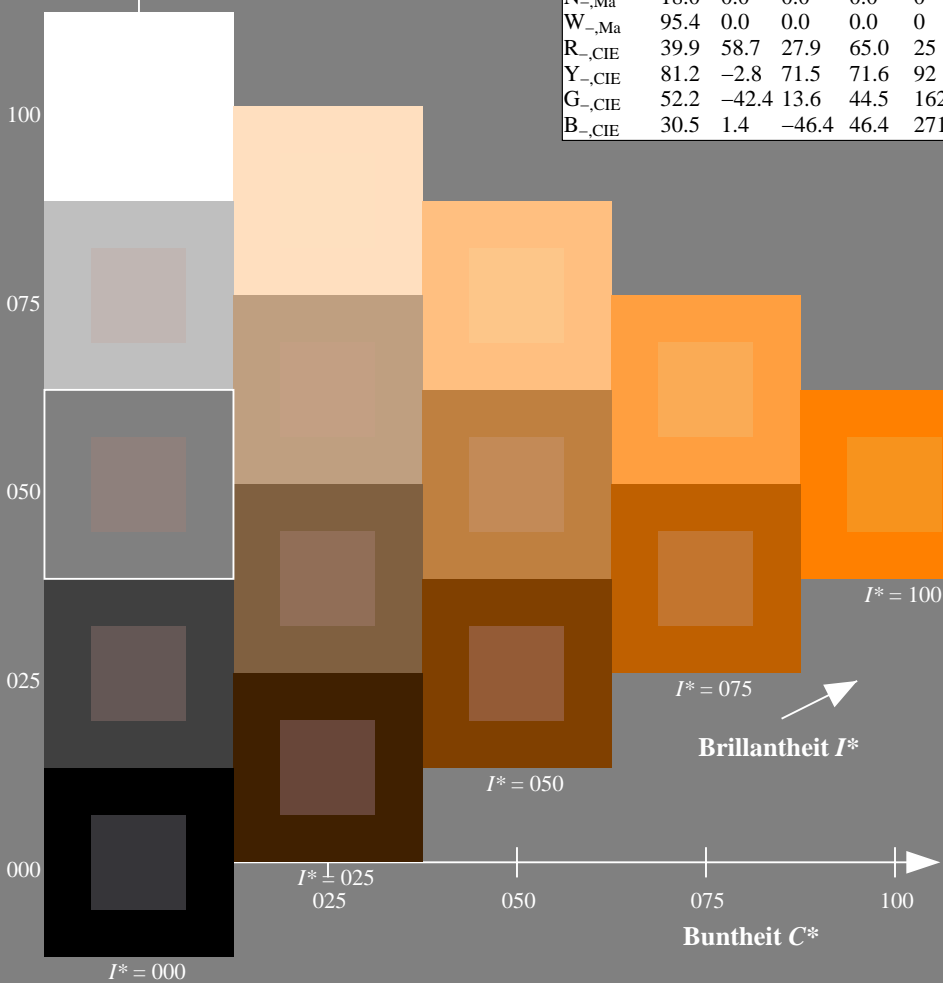
1.0 0.5 0.0 1.0 1.0

Dreiecks-Helligkeit T^*

%Umfang
 $u^*_{rel} = 92$
 %Regularität
 $g^*_H,rel = 57$
 $g^*_C,rel = 58$

ORS20a; adaptierte CIELAB-Daten

$H^*_$	$L^*=L^*_a a^*_a$	b^*_a	$C^*_{ab,a}$	$h^*_{ab,a}$	
R00Y_100_100_	48.4	66.1	40.2	77.3	31
R25Y_100_100_	56.8	48.0	50.5	69.6	46
R50Y_100_100_	68.6	25.0	63.9	68.6	68
R75Y_100_100_	80.6	4.8	77.2	77.3	86
Y00G_100_100_	90.2	-9.6	88.2	88.7	96
Y25G_100_100_	83.2	-18.4	79.9	81.9	102
Y50G_100_100_	73.3	-31.7	62.7	70.2	116
Y75G_100_100_	62.0	-49.7	43.2	65.8	139
G00B_100_100_	55.8	-65.2	33.8	73.4	152
G25B_100_100_	59.3	-50.3	-9.0	51.0	190
G50B_100_100_	63.0	-30.5	-42.0	51.9	234
G75B_100_100_	45.7	-5.7	-44.6	44.9	262
B00R_100_100_	27.5	25.9	-47.3	53.9	298
B25R_100_100_	38.3	52.6	-28.5	59.8	331
B50R_100_100_	49.5	73.5	-9.0	74.0	353
B75R_100_100_	48.9	69.3	12.9	70.4	10



Siehe ähnliche Dateien: <http://130.149.60.45/~farbmetrik/QG11/QG11.HTM>
 Technische Information: <http://www.ps.bam.de> oder <http://130.149.60.45/~farbmetrik>

TUB-Registrierung: 20130201-QG11/QG11LONA.TXT /.PS
 Anwendung für Messung von Display-Ausgabe
 TUB-Material: Code=rh4ta

Ein- und Ausgabe: Fernseh-Lichtfarben-System TLS00a für relativen CIELAB-Bunton $h_{ab,a,rel} = h_{ab}/360 = 59/360 = 0.16$

$H^*_d = R50Y_d$

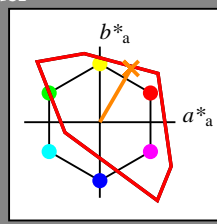
Daten für jede Geräte- (d) oder Elementarfarbe (e):

HIC^*_d

Buntoncode für die Farben dieser Seite:

$H^*_d = R50Y_d$

Dreiecks-Helligkeit T^*



TLS00a; adaptierte CIELAB-Daten

Name	$L^*=L^*_a$	a^*_a	b^*_a	$C^*_{ab,a}$	$h^*_{ab,a}$
R _{d, Ma}	50.4	76.9	64.5	100.4	40
Y _{d, Ma}	92.6	-20.7	90.7	93.0	102
G _{d, Ma}	83.6	-82.7	79.8	115.0	136
C _{d, Ma}	86.8	-46.1	-13.5	48.1	196
B _{d, Ma}	30.3	76.0	-103.5	128.5	306
M _{d, Ma}	57.2	94.3	-58.4	110.9	328
N _{d, Ma}	0.0	0.0	0.0	0.0	0
W _{d, Ma}	95.4	0.0	0.0	0.0	0
R _{d, CIE}	39.9	58.7	27.9	65.0	25
Y _{d, CIE}	81.2	-2.8	71.5	71.6	92
G _{d, CIE}	52.2	-42.4	13.6	44.5	162
B _{d, CIE}	30.5	1.4	-46.4	46.4	271

Daten für Maximalfarbe (Ma):

$LabCh^*_d, Ma$: 63 41 71 82 59

HIC^*_d, Ma : R50Y_100_100_d

$rgbic^*_d, Ma$:

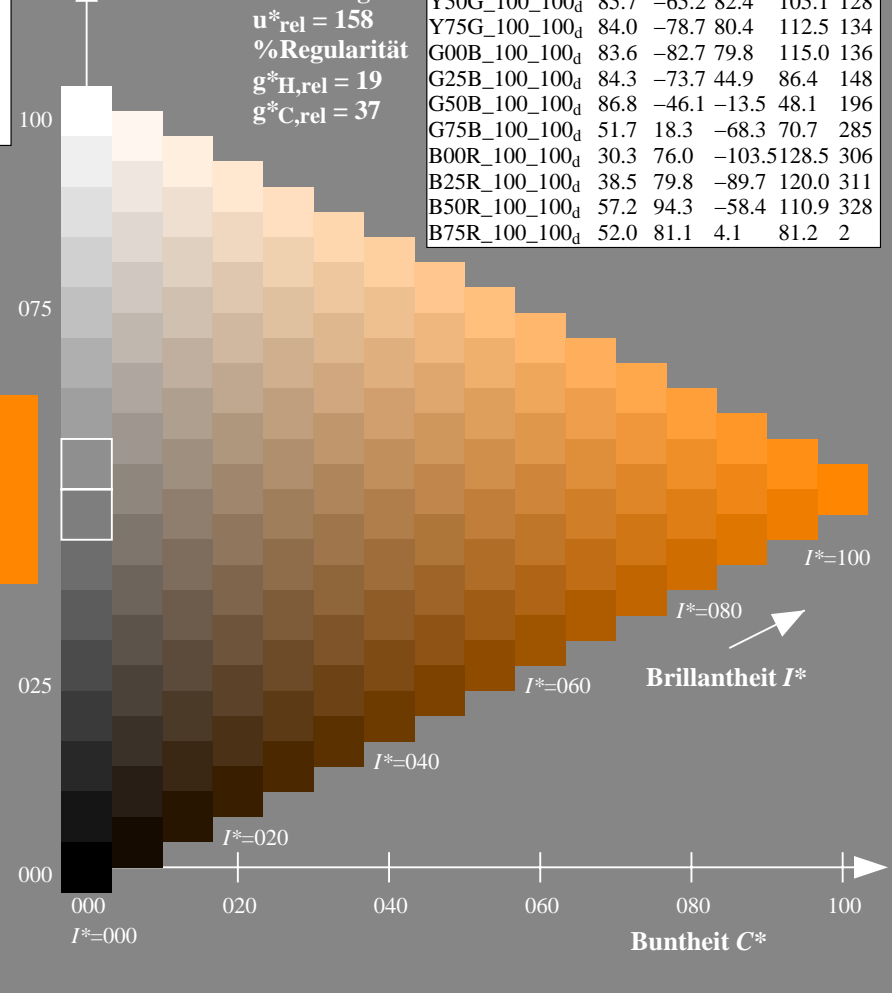
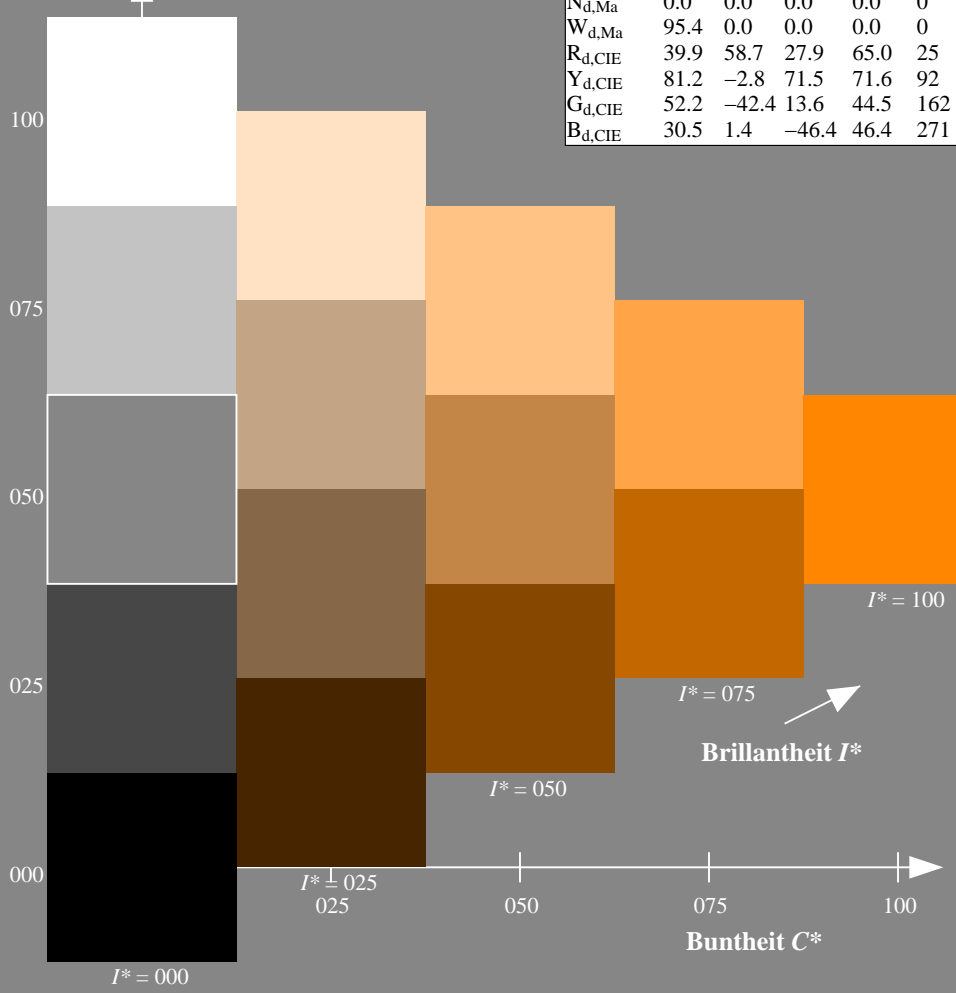
1.0 0.5 0.0 1.0 1.0

Dreiecks-Helligkeit T^*

%Umfang
 $u^*_{rel} = 158$
%Regularität
 $g^*_{H,rel} = 19$
 $g^*_{C,rel} = 37$

TLS00a; adaptierte CIELAB-Daten

H^*_d	$L^*=L^*_a$	a^*_a	b^*_a	$C^*_{ab,a}$	$h^*_{ab,a}$
R00Y_100_100 _d	50.4	76.9	64.5	100.4	40
R25Y_100_100 _d	53.7	67.6	65.8	94.4	44
R50Y_100_100 _d	63.6	41.3	71.0	82.2	59
R75Y_100_100 _d	78.2	7.8	80.6	81.0	84
Y00G_100_100 _d	92.6	-20.7	90.7	93.0	102
Y25G_100_100 _d	88.7	-43.3	86.2	96.5	116
Y50G_100_100 _d	85.7	-65.2	82.4	105.1	128
Y75G_100_100 _d	84.0	-78.7	80.4	112.5	134
G00B_100_100 _d	83.6	-82.7	79.8	115.0	136
G25B_100_100 _d	84.3	-73.7	44.9	86.4	148
G50B_100_100 _d	86.8	-46.1	-13.5	48.1	196
G75B_100_100 _d	51.7	18.3	-68.3	70.7	285
B00R_100_100 _d	30.3	76.0	-103.5	128.5	306
B25R_100_100 _d	38.5	79.8	-89.7	120.0	311
B50R_100_100 _d	57.2	94.3	-58.4	110.9	328
B75R_100_100 _d	52.0	81.1	4.1	81.2	2

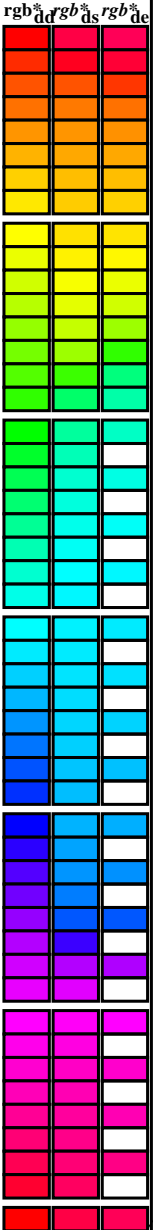


Siehe ähnliche Dateien: <http://130.149.60.45/~farbmetrik/QG11/QG11L0NA.TXT> / .PS
Technische Information: <http://www.ps.bam.de> oder <http://130.149.60.45/~farbmetrik>

TUB-Registrierung: 20130201-QG11/QG11L0NA.TXT /.PS TUB-Material: Code=rh4ta
Anwendung für Messung von Display-Ausgabe, keine Separation

Daten der Maximalfarbe M im Farbmetrik-System sRGB Norm-Gerät; keine Separation, D65 für Ein- oder Ausgabe; Sechs Bunttonwinkel der 60-Grad Standardfarben RYGBM_s; h_{ab,ds} = 30.0, 90.0, 150.0, 210.0, 270.0, 330.0; Sechs Bunttonwinkel der Gerätefarben RYGBM_d; h_{ab,d} = 40.0, 102.9, 136.0, 196.4, 306.3, 328.2; Sechs Bunttonwinkel der Elementarfarben RYGBM_e; h_{ab,e} = 25.5, 92.3, 162.2, 217.0, 271.7, 328.6

Table with 48 rows and 24 columns. Columns are grouped into pairs: (h_{ab,d}, h_{ab,s}), (h_{ab,e}, h_{ab,s}), (r_{gb}^a_{dd}, r_{gb}^a_{ds}), (LAB*_{ddx64M}, LAB*_{ddx361M}), (LAB*_{dsx361M}, LAB*_{dsx361M}), (r_{gb}^a_{ds}, r_{gb}^a_{de}). Each cell contains numerical values representing color coordinates and differences.



Siehe ähnliche Dateien: http://130.149.60.45/~farbmetrik/QG11/QG11LONA.TXT /PS Technische Information: http://www.ps.bam.de oder http://130.149.60.45/~farbmetrik

TUB-Registrierung: 20130201-QG11/QG11LONA.TXT /PS TUB-Material: Code=rh4ta Anwendung für Messung von Display-Ausgabe, keine Separation

Daten der Maximalfarbe M im Farbmetrik-System sRGB Norm-Gerät; keine Separation, D65 für Ein- oder Ausgabe; Sechs Bunttonwinkel der 60-Grad Standardfarben RYGBM_s; h_{ab,ds} = 30.0, 90.0, 150.0, 210.0, 270.0, 330.0;
Sechs Bunttonwinkel der Gerätefarben RYGBM_d; h_{ab,d} = 40.0, 102.9, 136.0, 196.4, 306.3, 328.2; Sechs Bunttonwinkel der Elementarfarben RYGBM_c; h_{ab,c} = 25.5, 92.3, 162.2, 217.0, 271.7, 328.6

h _{ab,d}	h _{ab,s}	h _{ab,e}	rgb* dd64M	LAB* ddx64M (x=LabCh)	rgb* dex361M	LAB* dex361M	rgb* dd	rgb* ds	rgb* de
40.0	30.0	25.4	1.0 0.0 0.0	50.4 76.9 64.5 100.4 40.0	1.0 0.0 0.263 50.9 78.3 37.3 86.7 25	1.0 0.0 0.156 50.7 77.7 51.0 92.9 33			
41.3	37.5	33.8	1.0 0.125 0.0	51.5 73.9 64.9 98.3 41.3	1.0 0.0 0.157 0.0 52.2 72.0 65.3 97.2 42				
44.6	45.0	42.1	1.0 0.25 0.0	54.0 66.7 65.9 93.8 44.6	1.0 0.358 0.0 57.7 56.9 67.8 88.6 49				
50.7	52.5	50.5	1.0 0.375 0.0	58.2 55.4 67.9 87.7 50.7	1.0 0.488 0.0 63.1 42.8 70.9 82.8 58				
59.7	60.0	58.8	1.0 0.5 0.0	63.6 41.3 71.0 82.2 59.7	1.0 0.577 0.0 67.6 31.8 73.9 80.5 66				
71.0	67.5	67.2	1.0 0.625 0.0	70.1 25.7 75.0 79.3 71.0	1.0 0.673 0.0 72.8 19.8 77.3 79.8 75				
82.9	75.0	75.6	1.0 0.75 0.0	77.2 9.8 79.7 80.4 82.9	1.0 0.755 0.0 77.5 9.3 80.1 80.6 83				
93.8	82.5	83.9	1.0 0.875 0.0	84.8 -5.7 85.0 85.2 93.8	1.0 0.857 0.0 83.7 -3.3 84.5 84.6 92				
102.8	90.0	92.3	1.0 1.0 0.0	92.6 -20.7 90.7 93.0 102.8	1.0 0.967 0.0 90.6 -16.4 89.5 91.0 100				
110.5	97.5	101.0	0.875 1.0 0.0	90.4 -33.1 88.1 94.1 110.5	0.888 1.0 0.0 90.7 -31.7 88.5 94.0 109				
117.6	105.0	109.7	0.75 1.0 0.0	88.5 -44.9 85.8 96.8 117.6	1.0 0.0 0.743 1.0 0.0 88.5 -45.4 85.8 97.1 117				
123.6	112.5	118.5	0.625 1.0 0.0	86.9 -55.8 83.9 100.7 123.6	0.529 1.0 0.0 86.0 -62.9 82.9 104.1 127				
128.3	120.0	127.2	0.5 1.0 0.0	85.7 -65.2 82.4 105.1 128.3	0.132 1.0 0.0 83.8 -81.2 80.1 114.1 135				
131.8	127.5	136.0	0.375 1.0 0.0	84.7 -72.8 81.2 109.1 131.8	0.0 1.0 0.41 84.1 -76.8 54.3 94.1 144				
134.1	135.0	144.7	0.25 1.0 0.0	84.1 -78.2 80.5 112.2 134.1	0.0 1.0 0.573 84.6 -70.9 36.3 79.8 152				
135.5	142.5	153.4	0.125 1.0 0.0	83.7 -81.4 80.0 114.2 135.5	0.0 1.0 0.706 85.2 -64.6 20.7 67.9 162				
136.0	150.0	162.2	0.0 1.0 0.0	83.6 -82.7 79.8 115.0 136.0	0.0 1.0 0.778 85.5 -60.6 12.2 61.9 168				
137.0	157.5	169.0	0.0 1.0 0.125 83.6	-82.1 76.6 112.3 137.0	0.0 1.0 0.847 85.9 -56.4 4.0 56.7 175				
139.3	165.0	175.9	0.0 1.0 0.25 83.8	-80.5 69.1 106.1 139.3	0.0 1.0 0.9 86.2 -53.2 -2.0 53.3 182				
143.2	172.5	182.7	0.0 1.0 0.375 84.0	-77.8 58.1 97.1 143.2	0.0 1.0 0.952 86.6 -49.8 -8.3 50.6 189				
148.6	180.0	189.6	0.0 1.0 0.5 84.3	-73.7 44.9 86.4 148.6	0.0 1.0 0.997 86.9 -46.3 -13.2 48.3 195				
155.8	187.5	196.4	0.0 1.0 0.625 84.7	-68.5 30.6 75.0 155.8	0.0 0.963 1.0 84.3 -42.5 -18.2 46.4 203				
165.6	195.0	203.2	0.0 1.0 0.75 85.3	-62.0 15.9 64.0 165.6	0.0 0.929 1.0 81.8 -38.8 -22.1 44.7 209				
178.8	202.5	210.1	0.0 1.0 0.875 86.0	-54.5 1.0 54.5 178.8	0.0 0.89 1.0 79.1 -34.2 -25.7 42.9 216				
196.3	210.0	216.9	0.0 1.0 1.0 86.8	-46.1 -13.5 48.1 196.3	0.0 0.859 1.0 76.9 -30.7 -29.0 42.4 223				
219.8	217.5	223.8	0.0 0.875 1.0 77.9	-32.3 -27.0 42.1 219.8	0.0 0.826 1.0 74.5 -27.1 -33.1 43.0 230				
247.2	225.0	230.6	0.0 0.75 1.0 69.1	-17.0 -40.7 44.1 247.2	0.0 0.797 1.0 72.4 -23.5 -36.3 43.4 237				
269.8	232.5	237.5	0.0 0.625 1.0 60.3	-0.1 -54.6 54.6 269.8	0.0 0.763 1.0 70.1 -18.9 -39.5 44.0 244				
285.0	240.0	244.3	0.0 0.5 1.0 51.7	18.3 -68.3 70.7 285.0	0.0 0.731 1.0 67.8 -15.0 -43.1 45.8 250				
294.8	247.5	251.2	0.0 0.375 1.0 43.8	37.6 -81.2 89.5 294.8	0.0 0.69 1.0 64.9 -10.1 -48.0 49.2 258				
301.1	255.0	258.0	0.0 0.25 1.0 37.1	55.9 -92.3 107.9 301.1	0.0 0.655 1.0 62.4 -5.0 -51.8 52.1 264				
304.8	262.5	264.8	0.0 0.125 1.0 32.4	69.5 -100.0 121.8 304.8	0.0 0.609 1.0 59.3 1.7 -56.5 56.6 271				
306.2	270.0	271.7	0.0 0.0 1.0 30.3	76.0 -103.5 128.5 306.2	0.0 0.555 1.0 55.5 9.3 -62.9 63.7 278				
306.6	277.5	278.8	0.125 0.0 1.0 31.0	76.2 -102.4 127.7 306.6	0.0 0.488 1.0 51.0 19.9 -69.6 72.5 285				
307.5	285.0	285.9	0.25 0.0 1.0 32.6	76.8 -99.8 125.9 307.5	0.0 0.404 1.0 45.7 32.7 -78.5 85.2 292				
309.2	292.5	293.0	0.375 0.0 1.0 35.1	77.9 -95.5 123.3 309.2	0.0 0.27 1.0 38.2 52.8 -90.6 105.0 300				
311.6	300.0	300.1	0.5 0.0 1.0 38.5	79.8 -89.7 120.0 311.6	0.0 0.146 0.0 31.3 76.4 -102.0 127.5 306				
314.8	307.5	307.2	0.625 0.0 1.0 42.7	82.5 -82.7 116.8 314.8	0.0 0.605 0.0 1.0 42.1 82.1 -83.8 117.4 314				
318.8	315.0	314.3	0.75 0.0 1.0 47.2	85.8 -75.1 114.0 318.8	0.0 0.811 0.0 1.0 49.7 87.9 -71.0 113.1 321				
323.3	322.5	321.4	0.875 0.0 1.0 52.1	89.8 -66.9 112.0 323.3	0.0 0.992 57.2 94.2 -57.4 110.3 328				
328.2	330.0	328.6	1.0 0.0 1.0 57.2	94.3 -58.4 110.9 328.2	0.0 0.856 55.4 89.9 -41.4 99.0 335				
334.0	337.5	335.7	1.0 0.0 0.875 55.6	90.3 -43.9 100.4 334.0	1.0 0.0 0.735 54.1 86.5 -26.6 90.6 342				
341.6	345.0	342.8	1.0 0.0 0.75 54.2	86.7 -28.6 91.3 341.6	1.0 0.0 0.65 53.3 84.5 -15.6 86.0 349				
351.4	352.5	349.9	1.0 0.0 0.625 53.0	83.6 -12.6 84.6 351.4	1.0 0.0 0.618 53.0 83.6 -11.6 84.4 352				
362.9	360.0	357.0	1.0 0.0 0.5 52.0	81.1 4.1 81.2 362.9	1.0 0.0 0.533 52.3 82.2 -0.1 82.2 359				
375.2	367.5	364.1	1.0 0.0 0.375 51.3	79.2 21.6 82.1 375.2	1.0 0.0 0.441 51.7 80.7 12.5 81.7 368				
386.7	375.0	371.2	1.0 0.0 0.25 50.8	77.9 39.2 87.2 386.7	1.0 0.0 0.361 51.3 79.3 23.6 82.8 376				
395.4	382.5	378.3	1.0 0.0 0.125 50.6	77.2 54.9 94.8 395.4	1.0 0.0 0.263 50.9 78.3 37.3 86.7 385				
400.0	390.0	385.4	1.0 0.0 0.0 50.4	76.9 64.5 100.4 400.0					

Siehe ähnliche Dateien: <http://130.149.60.45/~farbmetrik/QG11/QG11LONA.TXT> /PS
Technische Information: <http://www.ps.bam.de> oder <http://130.149.60.45/~farbmetrik>

TUB-Registrierung: 20130201-QG11/QG11LONA.TXT /PS TUB-Material: Code=rh4ta
Anwendung für Messung von Display-Ausgabe, keine Separation

Daten der Maximalfarbe M im Farbmetrik-System sRGB Norm-Gerät; keine Separation, D65 für Ein- oder Ausgabe; Sechs Bunttonwinkel der 60-Grad Standardfarben RYGBM_s; h_{ab,ds} = 30.0, 90.0, 150.0, 210.0, 270.0, 330.0; Sechs Bunttonwinkel der Gerätefarben RYGBM_d; h_{ab,d} = 40.0, 102.9, 136.0, 196.4, 306.3, 328.2; Sechs Bunttonwinkel der Elementarfarben RYGBM_c; h_{ab,c} = 25.5, 92.3, 162.2, 217.0, 271.7, 328.6

h _{ab,d}	h _{ab,s}	h _{ab,e}	rgb* dd361M	LAB* ddx361Mi (x=LabCh)	R _d	rgb* ds361Mi	LAB* dsx361Mi (x=LabCh)	R _s	rgb* dd361Mi	LAB* de361Mi	R _c	rgb* dd361Mi	rgb* dd	rgb* ds	rgb* de
40	30	25	1.0 0.0 0.0	50.4 76.9 64.5	100.4 40	1.0 0.0	0.203 50.8	78.0 45.1 90.1 30	1.0 0.0	0.0 0.0	1.0 0.0	0.263 50.9	78.3 37.3 86.7 25	1.0 0.0	0.0 0.0
40	31	26	1.0 0.016 0.0	50.6 76.5 64.6	100.1 40	1.0 0.0	0.189 50.7	78.0 46.9 91.0 31	1.0 0.0	0.017 0.0	1.0 0.0	0.251 50.9	78.0 39.0 87.2 26	1.0 0.0	0.017 0.0
40	32	27	1.0 0.033 0.0	50.7 76.1 64.6	99.8 40	1.0 0.0	0.174 50.7	77.9 48.7 91.8 32	1.0 0.0	0.033 0.0	1.0 0.0	0.236 50.8	78.0 41.0 88.1 27	1.0 0.0	0.033 0.0
40	33	28	1.0 0.05 0.0	50.9 75.7 64.7	99.6 40	1.0 0.0	0.16 50.7	77.7 50.5 92.7 33	1.0 0.0	0.05 0.0	1.0 0.0	0.22 50.8	78.1 43.0 89.1 28	1.0 0.0	0.05 0.0
40	34	29	1.0 0.066 0.0	51.0 75.3 64.7	99.3 40	1.0 0.0	0.146 50.6	77.6 52.3 93.6 34	1.0 0.0	0.067 0.0	1.0 0.0	0.204 50.8	78.0 44.9 90.1 29	1.0 0.0	0.067 0.0
40	35	31	1.0 0.083 0.0	51.1 74.9 64.8	99.0 40	1.0 0.0	0.131 50.6	77.3 54.2 94.4 35	1.0 0.0	0.083 0.0	1.0 0.0	0.188 50.7	78.0 46.9 91.0 31	1.0 0.0	0.083 0.0
41	36	32	1.0 0.1 0.0	51.3 74.5 64.8	98.7 41	1.0 0.0	0.11 50.6	77.3 56.1 95.5 36	1.0 0.1	0.1 0.0	1.0 0.0	0.172 50.7	77.9 49.0 92.0 32	1.0 0.1	0.1 0.0
41	37	33	1.0 0.116 0.0	51.4 74.1 64.9	98.5 41	1.0 0.0	0.082 50.6	77.2 58.2 96.7 37	1.0 0.117 0.0	1.0 0.0	0.156 50.7	77.7 51.0 92.9 33	1.0 0.117 0.0	1.0 0.117 0.0	
41	38	34	1.0 0.133 0.0	51.7 72.4 65.0	98.0 41	1.0 0.0	0.055 50.5	77.2 60.3 98.0 38	1.0 0.133 0.0	1.0 0.0	0.14 50.6	77.5 53.0 93.9 34	1.0 0.133 0.0	1.0 0.133 0.0	
41	39	35	1.0 0.15 0.0	52.0 72.4 65.2	97.4 41	1.0 0.0	0.028 50.5	77.1 62.4 99.2 39	1.0 0.15 0.0	1.0 0.0	0.123 50.6	77.2 55.1 94.9 35	1.0 0.15 0.0	1.0 0.15 0.0	
42	40	36	1.0 0.166 0.0	52.3 71.4 65.3	96.8 42	1.0 0.0	0.0 0.0	50.5 76.9 64.6 100.4 40	1.0 0.167 0.0	1.0 0.0	0.093 50.6	77.3 57.4 96.3 36	1.0 0.167 0.0	1.0 0.167 0.0	
42	41	37	1.0 0.183 0.0	52.7 70.5 65.5	96.2 42	1.0 0.0	0.095 0.0	51.3 74.6 64.9 98.9 41	1.0 0.183 0.0	1.0 0.0	0.062 50.5	77.2 59.7 97.6 37	1.0 0.183 0.0	1.0 0.183 0.0	
43	42	38	1.0 0.2 0.0	53.0 69.5 65.6	95.6 43	1.0 0.151 0.0	52.1 72.4 65.2 97.5 42	1.0 0.2 0.0	1.0 0.2 0.0	1.0 0.0	0.032 50.5	77.1 62.1 99.0 38	1.0 0.2 0.0	1.0 0.2 0.0	
43	43	39	1.0 0.216 0.0	53.4 68.6 65.7	95.0 43	1.0 0.188 0.0	52.8 70.3 65.5 96.1 43	1.0 0.217 0.0	1.0 0.217 0.0	1.0 0.0	0.001 50.5	76.9 64.5 100.4 39	1.0 0.217 0.0	1.0 0.217 0.0	
44	44	41	1.0 0.233 0.0	53.7 67.6 65.8	94.4 44	1.0 0.225 0.0	53.6 68.2 65.8 94.8 44	1.0 0.233 0.0	1.0 0.233 0.0	1.0 0.102 0.0	51.4 74.4 64.9 98.8 41	1.0 0.233 0.0	1.0 0.233 0.0		
44	45	42	1.0 0.25 0.0	54.0 66.7 65.9	93.8 44	1.0 0.256 0.0	54.3 66.1 66.1 93.5 45	1.0 0.25 0.0	1.0 0.25 0.0	1.0 0.157 0.0	52.2 72.0 65.3 97.2 42	1.0 0.25 0.0	1.0 0.25 0.0		
45	46	43	1.0 0.266 0.0	54.6 65.1 66.3	93.0 45	1.0 0.277 0.0	55.0 64.3 66.6 92.5 46	1.0 0.267 0.0	1.0 0.267 0.0	1.0 0.199 0.0	53.0 69.6 65.6 95.7 43	1.0 0.267 0.0	1.0 0.267 0.0		
46	47	44	1.0 0.283 0.0	55.1 63.6 66.6	92.2 46	1.0 0.297 0.0	55.6 62.4 66.9 91.5 47	1.0 0.283 0.0	1.0 0.283 0.0	1.0 0.24 0.0	53.9 67.3 65.9 94.2 44	1.0 0.283 0.0	1.0 0.283 0.0		
47	48	45	1.0 0.3 0.0	55.7 62.1 66.9	91.3 47	1.0 0.318 0.0	56.3 60.6 67.3 90.5 48	1.0 0.3 0.0	1.0 0.3 0.0	1.0 0.267 0.0	54.7 65.1 66.4 93.0 45	1.0 0.3 0.0	1.0 0.3 0.0		
47	49	46	1.0 0.316 0.0	56.2 60.6 67.2	90.5 47	1.0 0.338 0.0	57.0 58.7 67.6 89.5 49	1.0 0.317 0.0	1.0 0.317 0.0	1.0 0.29 0.0	55.4 63.1 66.8 91.9 46	1.0 0.317 0.0	1.0 0.317 0.0		
48	50	47	1.0 0.333 0.0	56.8 59.1 67.5	89.7 48	1.0 0.359 0.0	57.7 56.9 67.8 88.5 50	1.0 0.333 0.0	1.0 0.333 0.0	1.0 0.313 0.0	56.2 61.0 67.2 90.8 47	1.0 0.333 0.0	1.0 0.333 0.0		
49	51	48	1.0 0.35 0.0	57.3 57.6 67.7	88.9 49	1.0 0.378 0.0	58.3 55.1 68.1 87.6 51	1.0 0.35 0.0	1.0 0.35 0.0	1.0 0.336 0.0	56.9 59.0 67.5 89.7 48	1.0 0.35 0.0	1.0 0.35 0.0		
50	52	49	1.0 0.366 0.0	57.9 56.2 67.9	88.1 50	1.0 0.392 0.0	58.9 53.6 68.6 87.0 52	1.0 0.367 0.0	1.0 0.367 0.0	1.0 0.358 0.0	57.7 56.9 67.8 88.6 49	1.0 0.367 0.0	1.0 0.367 0.0		
51	53	51	1.0 0.383 0.0	58.5 54.5 68.2	87.3 51	1.0 0.406 0.0	59.6 52.0 69.0 86.4 53	1.0 0.383 0.0	1.0 0.383 0.0	1.0 0.379 0.0	58.4 55.0 68.1 87.6 51	1.0 0.383 0.0	1.0 0.383 0.0		
52	54	52	1.0 0.4 0.0	59.3 52.6 68.8	86.6 52	1.0 0.42 0.0	60.2 50.4 69.4 85.8 54	1.0 0.4 0.0	1.0 0.4 0.0	1.0 0.395 0.0	59.1 53.2 68.7 86.9 52	1.0 0.4 0.0	1.0 0.4 0.0		
53	55	53	1.0 0.416 0.0	60.0 50.7 69.3	85.9 53	1.0 0.433 0.0	60.8 48.8 69.8 85.2 55	1.0 0.417 0.0	1.0 0.417 0.0	1.0 0.41 0.0	59.7 51.5 69.1 86.2 53	1.0 0.417 0.0	1.0 0.417 0.0		
54	56	54	1.0 0.433 0.0	60.7 48.8 69.7	85.1 54	1.0 0.447 0.0	61.4 47.3 70.1 84.5 56	1.0 0.433 0.0	1.0 0.433 0.0	1.0 0.426 0.0	60.4 49.7 69.6 85.5 54	1.0 0.433 0.0	1.0 0.433 0.0		
56	57	55	1.0 0.45 0.0	61.4 46.9 70.1	84.4 56	1.0 0.461 0.0	62.0 45.7 70.4 83.9 57	1.0 0.45 0.0	1.0 0.45 0.0	1.0 0.441 0.0	61.1 48.0 69.9 84.8 55	1.0 0.45 0.0	1.0 0.45 0.0		
57	58	56	1.0 0.466 0.0	62.2 45.1 70.4	83.6 57	1.0 0.475 0.0	62.6 44.1 70.7 83.3 58	1.0 0.467 0.0	1.0 0.467 0.0	1.0 0.457 0.0	61.8 46.2 70.3 84.1 56	1.0 0.467 0.0	1.0 0.467 0.0		
58	59	57	1.0 0.483 0.0	62.9 43.2 70.7	82.9 58	1.0 0.489 0.0	63.2 42.6 70.9 82.7 59	1.0 0.483 0.0	1.0 0.483 0.0	1.0 0.472 0.0	62.5 44.5 70.6 83.4 57	1.0 0.483 0.0	1.0 0.483 0.0		
59	60	58	1.0 0.5 0.0	63.6 41.3 71.0	82.2 59	1.0 0.502 0.0	63.8 41.1 71.2 82.2 60	1.0 0.5 0.0	1.0 0.5 0.0	1.0 0.488 0.0	63.1 42.8 70.9 82.8 58	1.0 0.5 0.0	1.0 0.5 0.0		
61	61	60	1.0 0.516 0.0	64.5 39.3 71.7	81.8 61	1.0 0.513 0.0	64.4 39.7 71.6 81.9 61	1.0 0.517 0.0	1.0 0.517 0.0	1.0 0.502 0.0	63.8 41.1 71.2 82.2 60	1.0 0.517 0.0	1.0 0.517 0.0		
62	62	61	1.0 0.533 0.0	65.3 37.2 72.4	81.4 62	1.0 0.525 0.0	64.9 38.3 72.1 81.7 62	1.0 0.533 0.0	1.0 0.533 0.0	1.0 0.515 0.0	64.4 39.5 71.7 81.9 61	1.0 0.533 0.0	1.0 0.533 0.0		
64	63	62	1.0 0.55 0.0	66.2 35.1 73.0	81.0 64	1.0 0.536 0.0	65.5 37.0 72.5 81.4 63	1.0 0.55 0.0	1.0 0.55 0.0	1.0 0.527 0.0	65.1 38.0 72.2 81.6 62	1.0 0.55 0.0	1.0 0.55 0.0		
65	64	63	1.0 0.566 0.0	67.1 33.0 73.5	80.6 65	1.0 0.547 0.0	66.1 35.6 72.9 81.1 64	1.0 0.567 0.0	1.0 0.567 0.0	1.0 0.54 0.0	65.7 36.5 72.7 81.3 63	1.0 0.567 0.0	1.0 0.567 0.0		
67	65	64	1.0 0.583 0.0	67.9 31.0 74.0	80.3 67	1.0 0.558 0.0	66.7 34.2 73.3 80.9 65	1.0 0.583 0.0	1.0 0.583 0.0	1.0 0.552 0.0	66.4 34.9 73.1 81.0 64	1.0 0.583 0.0	1.0 0.583 0.0		
68	66	65	1.0 0.6 0.0	68.6 28.9 74.5	79.9 68	1.0 0.569 0.0	67.2 32.8 73.7 80.6 66	1.0 0.6 0.0	1.0 0.6 0.0	1.0 0.564 0.0	67.0 33.4 73.5 80.7 65	1.0 0.6 0.0	1.0 0.6 0.0		
70	67	66	1.0 0.616 0.0	69.8 26.8 74.8	79.5 70	1.0 0.58 0.0	67.8 31.4 74.0 80.4 67	1.0 0.617 0.0	1.0 0.617 0.0	1.0 0.577 0.0	67.6 31.8 73.9 80.5 66	1.0 0.617 0.0	1.0 0.617 0.0		
71	68	67	1.0 0.633 0.0	70.5 24.7 75.4	79.4 71	1.0 0.591 0.0	68.4 30.0 74.3 80.1 68	1.0 0.633 0.0	1.0 0.633 0.0	1.0 0.589 0.0	68.3 30.3 74.2 80.2 67	1.0 0.633 0.0	1.0 0.633 0.0		
73	69	68	1.0 0.65 0.0	71.5 22.7 76.2	79.5 73	1.0 0.602 0.0	69.0 28.6 74.6 79.9 69	1.0 0.65 0.0	1.0 0.65 0.0	1.0 0.602 0.0	68.9 28.7 74.5 79.9 68	1.0 0.65 0.0	1.0 0.65 0.0		
75	70	70	1.0 0.666 0.0	72.4 20.6 76.9	79.7 75	1.0 0.614 0.0	69.5 27.2 74.8 79.6 70	1.0 0.667 0.0	1.0 0.667 0.0	1.0 0.614 0.0	69.5 27.2 74.8 79.6 70	1.0 0.667 0.0	1.0 0.667 0.0		
76	71	71	1.0 0.683 0.0	73.4 18.5 77.6	79.8 76	1.0 0.625 0.0	70.1 25.8 75.0 79.4 71	1.0 0.683 0.0	1.0 0.683 0.0	1.0 0.626 0.0	70.2 25.6 75.1 79.4 71	1.0 0.683 0.0	1.0 0.683 0.0		
78	72	72	1.0 0.7 0.0	74.3 16.3 78.2	79.9 78	1.0 0.635 0.0	70.7 24.5 75.6 79.4 72	1.0 0.7 0.0	1.0 0.7 0.0	1.0 0.638 0.0	70.9 24.2 75.7 79.5 72	1.0 0.7 0.0	1.0 0.7 0.0		
79	73	73	1.0 0.716 0.0	75.3 14.2 78.8	80.1 79	1.0 0.646 0.0	71.3 23.3 76.1 79.5 73	1.0 0.717 0.0	1.0 0.717 0.0	1.0 0.65 0.0	71.5 22.8 76.2 79.6 73	1.0 0.717 0.0	1.0 0.717 0.0		
81	74	74	1.0 0.733 0.0	76.2 12.0 79.3	80.2 81	1.0 0.656 0.0	71.9 21.9 76.5 79.6 74	1.0 0.733 0.0	1.0 0.733 0.0	1.0 0.661 0.0	72.2 21.3 76.8 79.7 74	1.0 0.733 0.0	1.0 0.733 0.0		
82	75	75	1.0 0.75 0.0	77.2 9.8 79.7	80.4 82	1.0 0.667 0.0	72.5 20.6 77.0 79.7 75	1.0 0.75 0.0	1.0 0.75 0.0	1.0 0.673 0.0	72.8 19.8 77.3 79.8 75	1.0 0.75 0.0	1.0 0.75 0.0		

Siehe ähnliche Dateien: <http://130.149.60.45/~farbmetrik/QG11/QG11LONA.TXT> /PS
Technische Information: <http://www.ps.bam.de> oder <http://130.149.60.45/~farbmetrik>

TUB-Registrierung: 20130201-QG11/QG11LONA.TXT /PS
Anwendung für Messung von Display-Ausgabe, keine Separation
TUB-Material: Code=rh4ta

Daten der Maximalfarbe M im Farbmetrik-System sRGB Norm-Gerät; keine Separation, D65 für Ein- oder Ausgabe; Sechs Bunttonwinkel der 60-Grad Standardfarben RYGBM; $h_{ab,ds} = 30.0, 90.0, 150.0, 210.0, 270.0, 330.0$;
Sechs Bunttonwinkel der Gerätefarben RYGBM; $h_{ab,d} = 40.0, 102.9, 136.0, 196.4, 306.3, 328.2$; Sechs Bunttonwinkel der Elementarfarben RYGBM; $h_{ab,e} = 25.5, 92.3, 162.2, 217.0, 271.7, 328.6$

$h_{ab,d}$	$h_{ab,s}$	$h_{ab,e}$	$rgb^*_{dd361Mi}$	LAB^*_{d361Mi}	$LAB^*_{ds361Mi}$	$LAB^*_{dsx361Mi}$	$rgb^*_{dd361Mi}$	$LAB^*_{de361Mi}$	$LAB^*_{dex361Mi}$	$rgb^*_{dd361Mi}$	$LAB^*_{de361Mi}$	$LAB^*_{dex361Mi}$	$rgb^*_{dd361Mi}$	rgb^*_{dd}	rgb^*_{ds}	rgb^*_{de}																
82	75	75	1.0	0.75	0.0	77.2	9.8	79.7	80.4	82	1.0	0.667	0.0	72.5	20.6	77.0	79.7	75	1.0	0.75	0.0	1.0	0.673	0.0	72.8	19.8	77.3	79.8	75	1.0	0.75	0.0
84	76	76	1.0	0.766	0.0	78.2	7.8	80.6	81.0	84	1.0	0.677	0.0	73.1	19.3	77.4	79.8	76	1.0	0.767	0.0	1.0	0.685	0.0	73.5	18.3	77.7	79.9	76	1.0	0.767	0.0
85	77	77	1.0	0.783	0.0	79.2	5.8	81.4	81.7	85	1.0	0.688	0.0	73.7	18.0	77.8	79.9	77	1.0	0.783	0.0	1.0	0.696	0.0	74.2	16.9	78.2	80.0	77	1.0	0.783	0.0
87	78	78	1.0	0.8	0.0	80.2	3.8	82.2	82.3	87	1.0	0.698	0.0	74.3	16.6	78.2	80.0	78	1.0	0.8	0.0	1.0	0.708	0.0	74.8	15.3	78.6	80.1	78	1.0	0.8	0.0
88	79	80	1.0	0.816	0.0	81.2	1.7	82.9	83.0	88	1.0	0.708	0.0	74.9	15.3	78.6	80.1	79	1.0	0.817	0.0	1.0	0.72	0.0	75.5	13.8	78.9	80.1	80	1.0	0.817	0.0
90	80	81	1.0	0.833	0.0	82.2	-0.3	83.6	83.6	90	1.0	0.719	0.0	75.5	13.9	78.9	80.1	80	1.0	0.833	0.0	1.0	0.731	0.0	76.2	12.3	79.3	80.2	81	1.0	0.833	0.0
91	81	82	1.0	0.85	0.0	83.3	-2.5	84.2	84.3	91	1.0	0.729	0.0	76.1	12.6	79.2	80.2	81	1.0	0.85	0.0	1.0	0.743	0.0	76.8	10.8	79.6	80.3	82	1.0	0.85	0.0
93	82	83	1.0	0.866	0.0	84.3	-4.6	84.8	84.9	93	1.0	0.74	0.0	76.7	11.2	79.5	80.3	82	1.0	0.867	0.0	1.0	0.755	0.0	77.5	9.3	80.1	80.6	83	1.0	0.867	0.0
94	83	84	1.0	0.883	0.0	85.3	-6.7	85.5	85.8	94	1.0	0.75	0.0	77.3	9.8	79.8	80.4	83	1.0	0.883	0.0	1.0	0.768	0.0	78.3	7.8	80.7	81.1	84	1.0	0.883	0.0
95	84	85	1.0	0.9	0.0	86.3	-8.5	86.4	86.8	95	1.0	0.762	0.0	78.0	8.5	80.4	80.9	84	1.0	0.9	0.0	1.0	0.78	0.0	79.1	6.2	81.4	81.6	85	1.0	0.9	0.0
96	85	86	1.0	0.916	0.0	87.4	-10.5	87.2	87.8	96	1.0	0.773	0.0	78.7	7.1	81.0	81.3	85	1.0	0.917	0.0	1.0	0.793	0.0	79.9	4.7	82.0	82.1	86	1.0	0.917	0.0
98	86	87	1.0	0.933	0.0	88.4	-12.4	88.0	88.9	98	1.0	0.785	0.0	79.3	5.7	81.6	81.8	86	1.0	0.933	0.0	1.0	0.806	0.0	80.6	3.1	82.5	82.6	87	1.0	0.933	0.0
99	87	88	1.0	0.95	0.0	89.5	-14.4	88.7	89.9	99	1.0	0.796	0.0	80.0	4.3	82.1	82.2	87	1.0	0.95	0.0	1.0	0.819	0.0	81.4	1.5	83.1	83.1	88	1.0	0.95	0.0
100	88	90	1.0	0.966	0.0	90.5	-16.5	89.4	91.0	100	1.0	0.808	0.0	80.7	2.9	82.6	82.7	88	1.0	0.967	0.0	1.0	0.831	0.0	82.2	0.0	83.6	83.6	90	1.0	0.967	0.0
101	89	91	1.0	0.983	0.0	91.6	-18.5	90.1	92.0	101	1.0	0.819	0.0	81.4	1.5	83.1	83.1	89	1.0	0.983	0.0	1.0	0.844	0.0	83.0	-1.7	84.1	84.1	91	1.0	0.983	0.0
102	90	92	1.0	1.0	0.0	92.6	-20.7	90.7	93.0	102	1.0	0.831	0.0	82.1	0.0	83.5	83.5	90	1.0	1.0	0.0	1.0	0.857	0.0	83.7	-3.3	84.5	84.6	92	1.0	1.0	0.0
103	91	93	0.983	1.0	0.0	92.3	-22.3	90.5	93.2	103	1.0	0.842	0.0	82.8	-1.4	84.0	84.0	91	0.983	1.0	0.0	1.0	0.87	0.0	84.5	-5.1	84.9	85.1	93	0.983	1.0	0.0
104	92	94	0.966	1.0	0.0	92.0	-24.0	90.2	93.3	104	1.0	0.853	0.0	83.5	-2.8	84.4	84.4	92	0.967	1.0	0.0	1.0	0.886	0.0	85.5	-6.9	85.7	85.9	94	0.967	1.0	0.0
105	93	95	0.95	1.0	0.0	91.7	-25.6	89.9	93.5	105	1.0	0.865	0.0	84.2	-4.3	84.8	84.9	93	0.95	1.0	0.0	1.0	0.902	0.0	86.5	-8.7	86.5	87.0	95	0.95	1.0	0.0
106	94	96	0.933	1.0	0.0	91.4	-27.3	89.5	93.6	106	1.0	0.877	0.0	84.9	-5.9	85.2	85.4	94	0.933	1.0	0.0	1.0	0.918	0.0	87.5	-10.6	87.3	88.0	96	0.933	1.0	0.0
108	95	98	0.916	1.0	0.0	91.1	-28.9	89.1	93.7	108	1.0	0.891	0.0	85.8	-7.4	85.9	86.3	95	0.917	1.0	0.0	1.0	0.934	0.0	88.5	-12.5	88.1	89.0	98	0.917	1.0	0.0
109	96	99	0.9	1.0	0.0	90.8	-30.6	88.7	93.9	109	1.0	0.904	0.0	86.7	-9.0	86.6	87.1	96	0.9	1.0	0.0	1.0	0.951	0.0	89.6	-14.4	88.8	90.0	99	0.9	1.0	0.0
110	97	100	0.883	1.0	0.0	90.5	-32.2	88.3	94.0	110	1.0	0.918	0.0	87.5	-10.6	87.3	88.0	97	0.883	1.0	0.0	1.0	0.967	0.0	90.6	-16.4	89.5	91.0	100	0.883	1.0	0.0
111	98	101	0.866	1.0	0.0	90.3	-33.8	88.0	94.3	111	1.0	0.932	0.0	88.4	-12.3	88.0	88.9	98	0.867	1.0	0.0	1.0	0.983	0.0	91.6	-18.5	90.1	92.0	101	0.867	1.0	0.0
111	99	102	0.85	1.0	0.0	90.0	-35.4	87.7	94.6	111	1.0	0.946	0.0	89.3	-13.9	88.6	89.7	99	0.85	1.0	0.0	1.0	0.999	0.0	92.6	-20.5	90.7	93.0	102	0.85	1.0	0.0
112	100	103	0.833	1.0	0.0	89.8	-37.0	87.5	95.0	112	1.0	0.96	0.0	90.2	-15.6	89.2	90.6	100	0.833	1.0	0.0	1.0	0.982	0.0	92.3	-22.4	90.5	93.2	103	0.833	1.0	0.0
113	101	105	0.816	1.0	0.0	89.5	-38.6	87.2	95.4	113	1.0	0.974	0.0	91.0	-17.4	89.8	91.5	101	0.817	1.0	0.0	1.0	0.963	0.0	92.0	-24.3	90.2	93.4	105	0.817	1.0	0.0
114	102	106	0.8	1.0	0.0	89.3	-40.1	86.9	95.7	114	1.0	0.988	0.0	91.9	-19.1	90.3	92.3	102	0.8	1.0	0.0	1.0	0.944	0.0	91.7	-26.1	89.8	93.6	106	0.8	1.0	0.0
115	103	107	0.783	1.0	0.0	89.0	-41.7	86.6	96.1	115	0.998	1.0	0.0	92.6	-20.8	90.7	93.1	103	0.783	1.0	0.0	1.0	0.926	0.0	91.3	-28.0	89.4	93.7	107	0.783	1.0	0.0
116	104	108	0.766	1.0	0.0	88.7	-43.3	86.2	96.5	116	0.981	1.0	0.0	92.3	-22.5	90.5	93.2	104	0.767	1.0	0.0	1.0	0.907	0.0	91.0	-29.9	89.0	93.9	108	0.767	1.0	0.0
117	105	109	0.75	1.0	0.0	88.5	-44.9	85.8	96.8	117	0.965	1.0	0.0	92.0	-24.1	90.2	93.4	105	0.75	1.0	0.0	1.0	0.888	0.0	90.7	-31.7	88.5	94.0	109	0.75	1.0	0.0
118	106	110	0.733	1.0	0.0	88.3	-46.3	85.6	97.4	118	0.949	1.0	0.0	91.8	-25.7	89.9	93.5	106	0.733	1.0	0.0	1.0	0.868	0.0	90.3	-33.6	88.0	94.3	110	0.733	1.0	0.0
119	107	112	0.716	1.0	0.0	88.1	-47.8	85.4	97.9	119	0.933	1.0	0.0	91.5	-27.3	89.6	93.6	107	0.717	1.0	0.0	1.0	0.848	0.0	90.0	-35.6	87.8	94.7	112	0.717	1.0	0.0
120	108	113	0.7	1.0	0.0	87.9	-49.2	85.2	98.4	120	0.917	1.0	0.0	91.2	-28.9	89.2	93.8	108	0.7	1.0	0.0	1.0	0.827	0.0	89.7	-37.5	87.4	95.2	113	0.7	1.0	0.0
120	109	114	0.683	1.0	0.0	87.6	-50.7	84.9	98.9	120	0.901	1.0	0.0	90.9	-30.5	88.8	93.9	109	0.683	1.0	0.0	1.0	0.806	0.0	89.4	-39.5	87.1	95.7	114	0.683	1.0	0.0
121	110	115	0.666	1.0	0.0	87.4	-52.1	84.7	99.4	121	0.884	1.0	0.0	90.6	-32.1	88.4	94.1	110	0.667	1.0	0.0	1.0	0.786	0.0	89.1	-41.5	86.7	96.1	115	0.667	1.0	0.0
122	111	116	0.65	1.0	0.0	87.2	-53.6	84.4	100.0	122	0.868	1.0	0.0	90.3	-33.7	88.0	94.3	111	0.65	1.0	0.0	1.0	0.765	0.0	88.8	-43.4	86.2	96.6	116	0.65	1.0	0.0
123	112	117	0.633	1.0	0.0	87.0	-55.0	84.1	100.5	123	0.85	1.0	0.0	90.1	-35.4	87.8	94.7	112	0.633	1.0	0.0	1.0	0.743	0.0	88.5	-45.4	85.8	97.1	117	0.633	1.0	0.0
123	113	119	0.616	1.0	0.0	86.8	-56.4	83.8	101.0	123	0.832	1.0	0.0	89.8	-37.1	87.5	95.1	113	0.617	1.0	0.0	1.0	0.719	0.0	88.2	-47.5	85.5	97.9	119	0.617	1.0	0.0
124	114	120	0.6	1.0	0.0	86.7	-57.6	83.7	101.6	124	0.814	1.0	0.0	89.5	-38.7	87.2	95.5	114	0.6	1.0	0.0	1.0	0.695	0.0	87.8	-49.6	85.2	98.6	120	0.6	1.0	0.0
125	115	121	0.583	1.0	0.0	86.5	-58.9	83.5	102.2	125	0.797	1.0	0.0	89.3	-40.4	86.9	95.9	115	0.583	1.0	0.0	1.0	0.6									

Daten der Maximalfarbe M im Farbmetrik-System sRGB Norm-Gerät; keine Separation, D65 für Ein- oder Ausgabe; Sechs Bunttonwinkel der 60-Grad Standardfarben RYGBM_s; h_{ab,ds} = 30.0, 90.0, 150.0, 210.0, 270.0, 330.0; Sechs Bunttonwinkel der Gerätefarben RYGBM_d; h_{ab,d} = 40.0, 102.9, 136.0, 196.4, 306.3, 328.2; Sechs Bunttonwinkel der Elementarfarben RYGBM_c; h_{ab,c} = 25.5, 92.3, 162.2, 217.0, 271.7, 328.6

h _{ab,d}	h _{ab,s}	h _{ab,e}	rgb [*] dd361M	LAB [*] ddx361Mi (x=LabCh)	rgb [*] ds361Mi	LAB [*] dsx361Mi (x=LabCh)	rgb [*] dd361Mi	LAB [*] de361Mi	rgb [*] dex361Mi (x=LabCh)	rgb [*] dd361Mi	LAB [*] dd361Mi	rgb [*] dd361Mi	LAB [*] dd361Mi	rgb [*] dd361Mi	LAB [*] dd361Mi																				
128	120	127	0.5	1.0	0.0	85.7	-65.2	82.4	105.1	128	0.7	1.0	0.0	87.9	-49.1	85.3	98.4	120	0.5	1.0	0.0	0.529	1.0	0.0	86.0	-62.9	82.9	104.1	127	0.5	1.0	0.0			
128	121	128	0.483	1.0	0.0	85.5	-66.2	82.3	105.6	128	0.68	1.0	0.0	87.7	-50.9	84.9	99.1	121	0.483	1.0	0.0	0.498	1.0	0.0	85.7	-65.3	82.4	105.2	128	0.483	1.0	0.0			
129	122	129	0.466	1.0	0.0	85.4	-67.2	82.1	106.1	129	0.659	1.0	0.0	87.4	-52.8	84.6	99.7	122	0.466	1.0	0.0	0.456	1.0	0.0	85.4	-67.8	82.1	106.5	129	0.466	1.0	0.0			
129	123	130	0.45	1.0	0.0	85.3	-68.2	82.0	106.7	129	0.638	1.0	0.0	87.1	-54.6	84.2	100.4	123	0.45	1.0	0.0	0.414	1.0	0.0	85.1	-70.3	81.7	107.9	130	0.45	1.0	0.0			
130	124	131	0.433	1.0	0.0	85.0	-69.2	81.8	107.2	130	0.615	1.0	0.0	86.9	-56.5	83.9	101.1	124	0.433	1.0	0.0	0.372	1.0	0.0	84.7	-72.9	81.3	109.2	131	0.433	1.0	0.0			
130	125	133	0.416	1.0	0.0	85.2	-70.2	81.7	107.8	130	0.589	1.0	0.0	86.6	-58.4	83.6	102.1	125	0.417	1.0	0.0	0.309	1.0	0.0	84.4	-75.6	80.9	110.8	133	0.417	1.0	0.0			
131	126	134	0.4	1.0	0.0	84.9	-71.3	81.5	108.3	131	0.562	1.0	0.0	86.3	-60.4	83.3	103.0	126	0.4	1.0	0.0	0.244	1.0	0.0	84.1	-78.3	80.5	112.4	134	0.4	1.0	0.0			
131	127	135	0.383	1.0	0.0	84.8	-72.3	81.3	108.8	131	0.536	1.0	0.0	86.1	-62.4	83.0	103.9	127	0.383	1.0	0.0	0.132	1.0	0.0	83.8	-81.2	80.1	114.1	135	0.383	1.0	0.0			
132	128	136	0.366	1.0	0.0	84.7	-73.2	81.2	109.3	132	0.51	1.0	0.0	85.8	-64.4	82.6	104.8	128	0.367	1.0	0.0	0.0	1.0	0.073	83.7	-82.3	78.0	113.5	136	0.367	1.0	0.0			
132	129	137	0.35	1.0	0.0	84.6	-73.9	81.1	109.7	132	0.477	1.0	0.0	85.5	-66.5	82.3	105.8	129	0.35	1.0	0.0	0.0	1.0	0.165	83.7	-81.6	74.2	110.4	137	0.35	1.0	0.0			
132	130	138	0.333	1.0	0.0	84.5	-74.6	81.0	110.1	132	0.442	1.0	0.0	85.3	-68.7	82.0	107.0	130	0.333	1.0	0.0	0.0	1.0	0.227	83.8	-80.8	70.5	107.3	138	0.333	1.0	0.0			
132	131	140	0.316	1.0	0.0	84.4	-75.3	80.9	110.6	132	0.406	1.0	0.0	85.0	-70.9	81.6	108.1	131	0.317	1.0	0.0	0.0	1.0	0.273	83.8	-80.0	67.0	104.5	140	0.317	1.0	0.0			
133	132	141	0.3	1.0	0.0	84.3	-76.0	80.8	111.0	133	0.368	1.0	0.0	84.7	-73.1	81.2	109.3	132	0.3	1.0	0.0	0.0	1.0	0.311	83.9	-79.3	63.7	101.8	141	0.3	1.0	0.0			
133	133	142	0.283	1.0	0.0	84.2	-76.8	80.7	111.4	133	0.314	1.0	0.0	84.5	-75.4	80.9	110.7	133	0.283	1.0	0.0	0.0	1.0	0.349	84.0	-78.4	60.4	99.0	142	0.283	1.0	0.0			
133	134	143	0.266	1.0	0.0	84.2	-77.5	80.6	111.8	133	0.261	1.0	0.0	84.2	-77.7	80.6	112.0	134	0.267	1.0	0.0	0.0	1.0	0.383	84.0	-77.5	57.3	96.4	143	0.267	1.0	0.0			
134	135	144	0.25	1.0	0.0	84.1	-78.2	80.5	112.2	134	0.173	1.0	0.0	83.9	-80.2	80.3	113.5	135	0.25	1.0	0.0	0.0	1.0	0.41	84.1	-76.8	54.3	94.1	144	0.25	1.0	0.0			
134	136	145	0.233	1.0	0.0	84.0	-78.7	80.4	112.5	134	0.004	1.0	0.0	83.6	-82.6	79.9	115.0	136	0.233	1.0	0.0	0.0	1.0	0.437	84.2	-75.9	51.5	91.8	145	0.233	1.0	0.0			
134	137	147	0.216	1.0	0.0	84.0	-79.1	80.4	112.8	134	0.0	1.0	0.125	83.7	-82.1	76.6	112.3	137	0.217	1.0	0.0	0.0	1.0	0.464	84.2	-75.0	48.7	89.5	147	0.217	1.0	0.0			
134	138	148	0.2	1.0	0.0	83.9	-79.5	80.3	113.0	134	0.0	1.0	0.178	83.7	-81.4	73.4	109.7	138	0.2	1.0	0.0	0.0	1.0	0.491	84.3	-74.1	45.9	87.2	148	0.2	1.0	0.0			
134	139	149	0.183	1.0	0.0	83.9	-79.9	80.2	113.3	134	0.0	1.0	0.231	83.8	-80.7	70.3	107.1	139	0.183	1.0	0.0	0.0	1.0	0.513	84.4	-73.3	43.4	85.2	149	0.183	1.0	0.0			
135	140	150	0.166	1.0	0.0	83.8	-80.4	80.2	113.5	135	0.0	1.0	0.271	83.8	-80.1	67.3	104.7	140	0.167	1.0	0.0	0.0	1.0	0.533	84.5	-72.5	41.0	83.4	150	0.167	1.0	0.0			
135	141	151	0.15	1.0	0.0	83.8	-80.8	80.1	113.8	135	0.0	1.0	0.303	83.9	-79.4	64.4	102.3	141	0.15	1.0	0.0	0.0	1.0	0.553	84.5	-71.7	38.6	81.6	151	0.15	1.0	0.0			
135	142	152	0.133	1.0	0.0	83.7	-81.2	80.1	114.1	135	0.0	1.0	0.335	83.9	-78.7	61.6	100.0	142	0.133	1.0	0.0	0.0	1.0	0.573	84.6	-70.9	36.3	79.8	152	0.133	1.0	0.0			
135	143	154	0.116	1.0	0.0	83.7	-81.5	80.0	114.2	135	0.0	1.0	0.368	84.0	-77.9	58.8	97.7	143	0.117	1.0	0.0	0.0	1.0	0.593	84.7	-70.0	34.1	77.9	154	0.117	1.0	0.0			
135	144	155	0.1	1.0	0.0	83.7	-81.7	80.0	114.4	135	0.0	1.0	0.393	84.1	-77.3	56.2	95.6	144	0.1	1.0	0.0	0.0	1.0	0.614	84.7	-69.0	31.9	76.1	155	0.1	1.0	0.0			
135	145	156	0.083	1.0	0.0	83.7	-81.9	80.0	114.5	135	0.0	1.0	0.416	84.1	-76.6	53.7	93.6	145	0.083	1.0	0.0	0.0	1.0	0.631	84.8	-68.2	29.8	74.5	156	0.083	1.0	0.0			
135	146	157	0.066	1.0	0.0	83.7	-82.0	79.9	114.6	135	0.0	1.0	0.439	84.2	-75.9	51.3	91.7	146	0.067	1.0	0.0	0.0	1.0	0.646	84.9	-67.5	27.9	73.2	157	0.067	1.0	0.0			
135	147	158	0.049	1.0	0.0	83.6	-82.2	79.9	114.7	135	0.0	1.0	0.462	84.2	-75.1	48.8	89.7	147	0.05	1.0	0.0	0.0	1.0	0.661	85.0	-66.9	26.1	71.9	158	0.05	1.0	0.0			
135	148	159	0.033	1.0	0.0	83.6	-82.4	79.9	114.8	135	0.0	1.0	0.485	84.3	-74.3	46.5	87.7	148	0.033	1.0	0.0	0.0	1.0	0.676	85.0	-66.2	24.3	70.6	159	0.033	1.0	0.0			
135	149	161	0.016	1.0	0.0	83.6	-82.6	79.9	114.9	135	0.0	1.0	0.506	84.4	-73.5	44.2	85.9	149	0.017	1.0	0.0	0.0	1.0	0.691	85.1	-65.4	22.5	69.2	161	0.017	1.0	0.0			
136	150	162	0.0	1.0	0.0	83.6	-82.7	79.8	115.0	136	G _d	0.0	1.0	0.523	84.4	-72.9	42.1	84.3	150	G _s	0.0	1.0	0.0	0.0	1.0	0.706	85.2	-64.6	20.7	67.9	162	G _c	0.0	1.0	0.0
136	151	163	0.0	1.0	0.016	83.6	-82.7	79.4	114.6	136	0.0	1.0	0.541	84.5	-72.3	40.1	82.7	151	0.0	1.0	0.017	0.0	1.0	0.718	85.2	-63.9	19.4	66.9	163	0.0	1.0	0.017			
136	152	164	0.0	1.0	0.033	83.6	-82.6	79.0	114.3	136	0.0	1.0	0.558	84.5	-71.6	38.1	81.2	152	0.0	1.0	0.033	0.0	1.0	0.73	85.3	-63.2	18.1	65.9	164	0.0	1.0	0.033			
136	153	164	0.0	1.0	0.05	83.6	-82.5	78.5	113.9	136	0.0	1.0	0.575	84.6	-70.8	36.1	79.6	153	0.0	1.0	0.05	0.0	1.0	0.741	85.3	-62.5	16.8	64.8	164	0.0	1.0	0.05			
136	154	165	0.0	1.0	0.066	83.6	-82.4	78.1	113.5	136	0.0	1.0	0.592	84.7	-70.0	34.2	78.0	154	0.0	1.0	0.067	0.0	1.0	0.752	85.4	-61.9	15.6	63.9	165	0.0	1.0	0.067			
136	155	166	0.0	1.0	0.083	83.6	-82.3	77.6	113.2	136	0.0	1.0	0.61	84.7	-69.2	32.3	76.5	155	0.0	1.0	0.083	0.0	1.0	0.761	85.4	-61.5	14.5	63.2	166	0.0	1.0	0.083			
136	156	167	0.0	1.0	0.1	83.6	-82.2	77.2	112.8	136	0.0	1.0	0.61	84.8	-68.4	30.5	74.9	156	0.0	1.0	0.1	0.0	1.0	0.77	85.5	-61.1	13.3	62.6	167	0.0	1.0	0.1			
136	157	168	0.0	1.0	0.116	83.6	-82.1	76.8	112.5	136	0.0	1.0	0.639	84.9	-67.8	28.8	73.8	157	0.0	1.0	0.117	0.0	1.0	0.778	85.5	-60.6	12.2	61.9	168	0.0	1.0	0.117			
137	158	169	0.0	1.0	0.133	83.6	-82.0	76.0	111.9	137	0.0	1.0	0.652	84.9	-67.3	27.2	72.7	158	0.0	1.0	0.133	0.0	1.0	0.787	85.6	-60.2	11.1	61.3	169	0.0	1.0	0.133			
137	159	170	0.0	1.0	0.15	83.7	-81.8	75.0	111.0	137	0.0	1.0	0.665	85.0	-66.7	25.6	71.6	159	0.0	1.0	0.15	0.0	1.0	0.795											

Daten der Maximalfarbe M im Farbmetrik-System sRGB Norm-Gerät; keine Separation, D65 für Ein- oder Ausgabe; Sechs Bunttonwinkel der 60-Grad Standardfarben RYGBM_s; h_{ab,d,s} = 30.0, 90.0, 150.0, 210.0, 270.0, 330.0; Sechs Bunttonwinkel der Gerätefarben RYGBM_d; h_{ab,d} = 40.0, 102.9, 136.0, 196.4, 306.3, 328.2; Sechs Bunttonwinkel der Elementarfarben RYGBM_e; h_{ab,e} = 25.5, 92.3, 162.2, 217.0, 271.7, 328.6

h _{ab,d}	h _{ab,s}	h _{ab,e}	rgb [*] _{dd361M}	LAB [*] _{ddx361Mi (x=LabCh)}	rgb [*] _{ds361Mi}	LAB [*] _{dsx361Mi (x=LabCh)}	rgb [*] _{dd361Mi}	LAB [*] _{de361Mi}	rgb [*] _{dex361Mi (x=LabCh)}	rgb [*] _{dd361Mi}	rgb [*] _{dd361Mi}	rgb [*] _{dd361Mi}	rgb [*] _{dd361Mi}													
139	165	175	0.0	1.0	0.25	83.8	-80.5	69.1	106.1	139	0.0	1.0	0.25	83.8	-80.5	69.1	106.1	139	0.0	1.0	0.25	83.8	-80.5	69.1	106.1	139
139	166	176	0.0	1.0	0.266	83.8	-80.2	67.6	104.9	139	0.0	1.0	0.267	83.8	-80.2	67.6	104.9	139	0.0	1.0	0.267	83.8	-80.2	67.6	104.9	139
140	167	177	0.0	1.0	0.283	83.8	-79.9	66.1	103.7	140	0.0	1.0	0.283	83.8	-79.9	66.1	103.7	140	0.0	1.0	0.283	83.8	-79.9	66.1	103.7	140
140	168	178	0.0	1.0	0.3	83.8	-79.6	64.6	102.5	140	0.0	1.0	0.3	83.8	-79.6	64.6	102.5	140	0.0	1.0	0.3	83.8	-79.6	64.6	102.5	140
141	169	179	0.0	1.0	0.316	83.9	-79.2	63.1	101.3	141	0.0	1.0	0.317	83.9	-79.2	63.1	101.3	141	0.0	1.0	0.317	83.9	-79.2	63.1	101.3	141
141	170	180	0.0	1.0	0.333	83.9	-78.8	61.7	100.1	141	0.0	1.0	0.333	83.9	-78.8	61.7	100.1	141	0.0	1.0	0.333	83.9	-78.8	61.7	100.1	141
142	171	181	0.0	1.0	0.35	83.9	-78.4	60.2	98.9	142	0.0	1.0	0.35	83.9	-78.4	60.2	98.9	142	0.0	1.0	0.35	83.9	-78.4	60.2	98.9	142
142	172	182	0.0	1.0	0.366	84.0	-78.0	58.8	97.7	142	0.0	1.0	0.367	84.0	-78.0	58.8	97.7	142	0.0	1.0	0.367	84.0	-78.0	58.8	97.7	142
143	173	183	0.0	1.0	0.383	84.0	-77.6	57.2	96.4	143	0.0	1.0	0.383	84.0	-77.6	57.2	96.4	143	0.0	1.0	0.383	84.0	-77.6	57.2	96.4	143
144	174	184	0.0	1.0	0.4	84.0	-77.1	55.4	94.9	144	0.0	1.0	0.4	84.0	-77.1	55.4	94.9	144	0.0	1.0	0.4	84.0	-77.1	55.4	94.9	144
145	175	185	0.0	1.0	0.416	84.1	-76.6	53.6	93.5	145	0.0	1.0	0.417	84.1	-76.6	53.6	93.5	145	0.0	1.0	0.417	84.1	-76.6	53.6	93.5	145
145	176	185	0.0	1.0	0.433	84.1	-76.1	51.8	92.1	145	0.0	1.0	0.433	84.1	-76.1	51.8	92.1	145	0.0	1.0	0.433	84.1	-76.1	51.8	92.1	145
146	177	186	0.0	1.0	0.45	84.2	-75.6	50.0	90.6	146	0.0	1.0	0.45	84.2	-75.6	50.0	90.6	146	0.0	1.0	0.45	84.2	-75.6	50.0	90.6	146
147	178	187	0.0	1.0	0.466	84.2	-75.0	48.3	89.2	147	0.0	1.0	0.467	84.2	-75.0	48.3	89.2	147	0.0	1.0	0.467	84.2	-75.0	48.3	89.2	147
147	179	188	0.0	1.0	0.483	84.3	-74.4	46.6	87.8	147	0.0	1.0	0.483	84.3	-74.4	46.6	87.8	147	0.0	1.0	0.483	84.3	-74.4	46.6	87.8	147
148	180	189	0.0	1.0	0.5	84.3	-73.7	44.9	86.4	148	0.0	1.0	0.5	84.3	-73.7	44.9	86.4	148	0.0	1.0	0.5	84.3	-73.7	44.9	86.4	148
149	181	190	0.0	1.0	0.516	84.4	-73.2	42.9	84.8	149	0.0	1.0	0.517	84.4	-73.2	42.9	84.8	149	0.0	1.0	0.517	84.4	-73.2	42.9	84.8	149
150	182	191	0.0	1.0	0.533	84.4	-72.6	40.9	83.3	150	0.0	1.0	0.533	84.4	-72.6	40.9	83.3	150	0.0	1.0	0.533	84.4	-72.6	40.9	83.3	150
151	183	192	0.0	1.0	0.55	84.5	-71.9	39.0	81.8	151	0.0	1.0	0.55	84.5	-71.9	39.0	81.8	151	0.0	1.0	0.55	84.5	-71.9	39.0	81.8	151
152	184	193	0.0	1.0	0.566	84.5	-71.2	37.0	80.3	152	0.0	1.0	0.567	84.5	-71.2	37.0	80.3	152	0.0	1.0	0.567	84.5	-71.2	37.0	80.3	152
153	185	194	0.0	1.0	0.583	84.6	-70.5	35.2	78.8	153	0.0	1.0	0.583	84.6	-70.5	35.2	78.8	153	0.0	1.0	0.583	84.6	-70.5	35.2	78.8	153
154	186	195	0.0	1.0	0.6	84.6	-69.7	33.3	77.3	154	0.0	1.0	0.6	84.6	-69.7	33.3	77.3	154	0.0	1.0	0.6	84.6	-69.7	33.3	77.3	154
155	187	195	0.0	1.0	0.616	84.7	-68.9	31.5	75.8	155	0.0	1.0	0.617	84.7	-68.9	31.5	75.8	155	0.0	1.0	0.617	84.7	-68.9	31.5	75.8	155
156	188	196	0.0	1.0	0.633	84.8	-68.1	29.5	74.3	156	0.0	1.0	0.633	84.8	-68.1	29.5	74.3	156	0.0	1.0	0.633	84.8	-68.1	29.5	74.3	156
157	189	197	0.0	1.0	0.65	84.8	-67.4	27.4	72.8	157	0.0	1.0	0.65	84.8	-67.4	27.4	72.8	157	0.0	1.0	0.65	84.8	-67.4	27.4	72.8	157
159	190	198	0.0	1.0	0.666	84.9	-66.7	25.4	71.3	159	0.0	1.0	0.667	84.9	-66.7	25.4	71.3	159	0.0	1.0	0.667	84.9	-66.7	25.4	71.3	159
160	191	199	0.0	1.0	0.683	85.0	-65.8	23.4	69.9	160	0.0	1.0	0.683	85.0	-65.8	23.4	69.9	160	0.0	1.0	0.683	85.0	-65.8	23.4	69.9	160
161	192	200	0.0	1.0	0.7	85.1	-65.0	21.4	68.4	161	0.0	1.0	0.7	85.1	-65.0	21.4	68.4	161	0.0	1.0	0.7	85.1	-65.0	21.4	68.4	161
163	193	201	0.0	1.0	0.716	85.2	-64.0	19.5	67.0	163	0.0	1.0	0.717	85.2	-64.0	19.5	67.0	163	0.0	1.0	0.717	85.2	-64.0	19.5	67.0	163
164	194	202	0.0	1.0	0.733	85.2	-63.1	17.6	65.5	164	0.0	1.0	0.733	85.2	-63.1	17.6	65.5	164	0.0	1.0	0.733	85.2	-63.1	17.6	65.5	164
165	195	203	0.0	1.0	0.75	85.3	-62.0	15.9	64.0	165	0.0	1.0	0.75	85.3	-62.0	15.9	64.0	165	0.0	1.0	0.75	85.3	-62.0	15.9	64.0	165
167	196	204	0.0	1.0	0.766	85.4	-61.2	13.7	62.8	167	0.0	1.0	0.767	85.4	-61.2	13.7	62.8	167	0.0	1.0	0.767	85.4	-61.2	13.7	62.8	167
169	197	205	0.0	1.0	0.783	85.5	-60.4	11.5	61.5	169	0.0	1.0	0.783	85.5	-60.4	11.5	61.5	169	0.0	1.0	0.783	85.5	-60.4	11.5	61.5	169
170	198	206	0.0	1.0	0.8	85.6	-59.5	9.5	60.2	170	0.0	1.0	0.8	85.6	-59.5	9.5	60.2	170	0.0	1.0	0.8	85.6	-59.5	9.5	60.2	170
172	199	206	0.0	1.0	0.816	85.7	-58.5	7.5	59.0	172	0.0	1.0	0.817	85.7	-58.5	7.5	59.0	172	0.0	1.0	0.817	85.7	-58.5	7.5	59.0	172
174	200	207	0.0	1.0	0.833	85.8	-57.4	5.5	57.7	174	0.0	1.0	0.833	85.8	-57.4	5.5	57.7	174	0.0	1.0	0.833	85.8	-57.4	5.5	57.7	174
176	201	208	0.0	1.0	0.85	85.9	-56.3	3.7	56.4	176	0.0	1.0	0.85	85.9	-56.3	3.7	56.4	176	0.0	1.0	0.85	85.9	-56.3	3.7	56.4	176
177	202	209	0.0	1.0	0.866	86.0	-55.1	1.9	55.2	177	0.0	1.0	0.867	86.0	-55.1	1.9	55.2	177	0.0	1.0	0.867	86.0	-55.1	1.9	55.2	177
180	203	210	0.0	1.0	0.883	86.1	-54.1	0.0	54.1	180	0.0	1.0	0.883	86.1	-54.1	0.0	54.1	180	0.0	1.0	0.883	86.1	-54.1	0.0	54.1	180
182	204	211	0.0	1.0	0.9	86.2	-53.2	-2.1	53.2	182	0.0	1.0	0.9	86.2	-53.2	-2.1	53.2	182	0.0	1.0	0.9	86.2	-53.2	-2.1	53.2	182
184	205	212	0.0	1.0	0.916	86.3	-52.2	-4.2	52.4	184	0.0	1.0	0.917	86.3	-52.2	-4.2	52.4	184	0.0	1.0	0.917	86.3	-52.2	-4.2	52.4	184
187	206	213	0.0	1.0	0.933	86.4	-51.1	-6.3	51.5	187	0.0	1.0	0.933	86.4	-51.1	-6.3	51.5	187	0.0	1.0	0.933	86.4	-51.1	-6.3	51.5	187
189	207	214	0.0	1.0	0.95	86.5	-50.0	-8.2	50.7	189	0.0	1.0	0.95	86.5	-50.0	-8.2	50.7	189	0.0	1.0	0.95	86.5	-50.0	-8.2	50.7	189
191	208	215	0.0	1.0	0.966	86.6	-48.8	-10.1	49.8	191	0.0	1.0	0.967	86.6	-48.8	-10.1	49.8	191	0.0	1.0	0.967	86.6	-48.8	-10.1	49.8	191
194	209	216	0.0	1.0	0.983	86.7	-47.5	-11.8	48.9	194	0.0	1.0	0.983	86.7	-47.5	-11.8	48.9	194	0.0	1.0	0.983	86.7	-47.5	-11.8	48.9	194
196	210	216	0.0	1.0	1.0	86.8	-46.1	-13.5	48.1	196	0.0	1.0	1.0	86.8	-46.1	-13.5	48.1	196	0.0	1.0	1.0	86.8	-46.1	-13.5	48.1	196

Siehe ähnliche Dateien: http://130.149.60.45/~farbmetrik/QG11/QG11LONA.TXT /PS
Technische Information: http://www.ps.bam.de oder http://130.149.60.45/~farbmetrik

TUB-Registrierung: 20130201-QG11/QG11LONA.TXT /PS TUB-Material: Code=rh4ta
Anwendung für Messung von Display-Ausgabe, keine Separation

Daten der Maximalfarbe M im Farbmetrik-System sRGB Norm-Gerät; keine Separation, D65 für Ein- oder Ausgabe; Sechs Bunttonwinkel der 60-Grad Standardfarben RYGBM_s; h_{ab,d,s} = 30.0, 90.0, 150.0, 210.0, 270.0, 330.0; Sechs Bunttonwinkel der Gerätefarben RYGBM_d; h_{ab,d} = 40.0, 102.9, 136.0, 196.4, 306.3, 328.2; Sechs Bunttonwinkel der Elementarfarben RYGBM_c; h_{ab,c} = 25.5, 92.3, 162.2, 217.0, 271.7, 328.6

h _{ab,d}	h _{ab,s}	h _{ab,c}	rgb [*] _{dd361M}	LAB [*] _{ddx361Mi (x=LabCh)}	rgb [*] _{ds361Mi}	LAB [*] _{dsx361Mi (x=LabCh)}	rgb [*] _{dd361Mi}	LAB [*] _{de361Mi}	rgb [*] _{dex361Mi (x=LabCh)}	rgb [*] _{dd361Mi}	rgb [*] _{ds361Mi}	rgb [*] _{de361Mi}	rgb [*] _{ds361Mi}	rgb [*] _{de361Mi}																		
196	210	216	0.0	1.0	1.0	86.8	-46.1	-13.5	48.1	196	0.0	0.922	1.0	81.7	-38.6	-22.2	44.7	210	0.0	0.983	1.0	0.0	0.885	1.0	78.7	-33.6	-26.1	42.7	217	0.0	0.983	1.0
199	211	217	0.0	0.983	1.0	85.6	-44.6	-15.8	47.3	199	0.0	0.917	1.0	81.0	-37.3	-23.3	44.2	212	0.0	0.967	1.0	0.0	0.881	1.0	78.4	-33.0	-26.5	42.4	218	0.0	0.967	1.0
202	212	218	0.0	0.966	1.0	84.5	-42.9	-17.9	46.5	202	0.0	0.911	1.0	80.6	-36.7	-23.8	43.9	213	0.0	0.95	1.0	0.0	0.876	1.0	78.0	-32.3	-26.9	42.2	219	0.0	0.95	1.0
205	213	219	0.0	0.95	1.0	83.3	-41.1	-19.8	45.7	205	0.0	0.906	1.0	80.2	-36.1	-24.3	43.6	214	0.0	0.933	1.0	0.0	0.871	1.0	77.7	-31.9	-27.4	42.2	220	0.0	0.933	1.0
208	214	220	0.0	0.933	1.0	82.1	-39.3	-21.7	44.9	208	0.0	0.901	1.0	79.8	-35.4	-24.8	43.4	215	0.0	0.917	1.0	0.0	0.867	1.0	77.4	-31.5	-27.9	42.3	221	0.0	0.917	1.0
212	215	221	0.0	0.916	1.0	80.9	-37.4	-23.4	44.1	212	0.0	0.895	1.0	79.5	-34.8	-25.3	43.1	216	0.0	0.9	1.0	0.0	0.863	1.0	77.2	-31.1	-28.5	42.3	222	0.0	0.9	1.0
215	216	222	0.0	0.9	1.0	79.7	-35.4	-24.9	43.3	215	0.0	0.89	1.0	79.1	-34.1	-25.7	42.9	217	0.0	0.883	1.0	0.0	0.859	1.0	76.9	-30.7	-29.0	42.4	223	0.0	0.883	1.0
218	217	223	0.0	0.883	1.0	78.5	-33.4	-26.3	42.5	218	0.0	0.885	1.0	78.7	-33.5	-26.1	42.6	218	0.0	0.867	1.0	0.0	0.855	1.0	76.6	-30.3	-29.6	42.5	224	0.0	0.867	1.0
221	218	224	0.0	0.866	1.0	77.4	-31.5	-28.1	42.2	221	0.0	0.879	1.0	78.3	-32.8	-26.6	42.4	219	0.0	0.85	1.0	0.0	0.851	1.0	76.3	-29.9	-30.1	42.6	225	0.0	0.85	1.0
225	219	225	0.0	0.85	1.0	76.2	-29.9	-30.2	42.5	225	0.0	0.874	1.0	77.9	-32.2	-27.0	42.2	220	0.0	0.833	1.0	0.0	0.846	1.0	76.0	-29.4	-30.6	42.6	226	0.0	0.833	1.0
228	220	226	0.0	0.833	1.0	75.0	-28.1	-32.3	42.8	228	0.0	0.87	1.0	77.6	-31.8	-27.6	42.2	221	0.0	0.817	1.0	0.0	0.842	1.0	75.7	-29.0	-31.1	42.7	227	0.0	0.817	1.0
232	221	227	0.0	0.816	1.0	73.8	-26.1	-34.2	43.1	232	0.0	0.865	1.0	77.3	-31.3	-28.2	42.3	222	0.0	0.8	1.0	0.0	0.838	1.0	75.4	-28.5	-31.6	42.8	227	0.0	0.8	1.0
236	222	227	0.0	0.8	1.0	72.6	-24.0	-36.0	43.3	236	0.0	0.861	1.0	77.0	-30.9	-28.8	42.4	223	0.0	0.783	1.0	0.0	0.834	1.0	75.1	-28.1	-32.1	42.8	228	0.0	0.783	1.0
239	223	228	0.0	0.783	1.0	71.4	-21.8	-37.7	43.6	239	0.0	0.856	1.0	76.7	-30.4	-29.4	42.5	224	0.0	0.767	1.0	0.0	0.83	1.0	74.8	-27.6	-32.6	42.9	229	0.0	0.767	1.0
243	224	229	0.0	0.766	1.0	70.2	-19.5	-39.3	43.9	243	0.0	0.851	1.0	76.3	-30.0	-30.0	42.5	225	0.0	0.75	1.0	0.0	0.826	1.0	74.5	-27.1	-33.1	43.0	230	0.0	0.75	1.0
247	225	230	0.0	0.75	1.0	69.1	-17.0	-40.7	44.1	247	0.0	0.847	1.0	76.0	-29.5	-30.6	42.6	226	0.0	0.733	1.0	0.0	0.821	1.0	74.2	-26.6	-33.6	43.0	231	0.0	0.733	1.0
250	226	231	0.0	0.733	1.0	67.9	-15.3	-42.9	45.5	250	0.0	0.842	1.0	75.7	-29.0	-31.1	42.7	227	0.0	0.717	1.0	0.0	0.817	1.0	73.9	-26.1	-34.1	43.1	232	0.0	0.717	1.0
253	227	232	0.0	0.716	1.0	66.7	-13.5	-44.9	46.9	253	0.0	0.838	1.0	75.4	-28.5	-31.7	42.8	228	0.0	0.7	1.0	0.0	0.813	1.0	73.6	-25.6	-34.6	43.2	233	0.0	0.7	1.0
256	228	233	0.0	0.7	1.0	65.5	-11.4	-46.9	48.3	256	0.0	0.833	1.0	75.0	-28.0	-32.2	42.8	229	0.0	0.683	1.0	0.0	0.809	1.0	73.3	-25.1	-35.0	43.2	234	0.0	0.683	1.0
259	229	234	0.0	0.683	1.0	64.4	-9.2	-48.8	49.7	259	0.0	0.829	1.0	74.7	-27.5	-32.8	42.9	230	0.0	0.667	1.0	0.0	0.805	1.0	73.0	-24.6	-35.5	43.3	235	0.0	0.667	1.0
262	230	235	0.0	0.666	1.0	63.2	-6.8	-50.6	51.1	262	0.0	0.824	1.0	74.4	-26.9	-33.3	43.0	231	0.0	0.65	1.0	0.0	0.801	1.0	72.7	-24.1	-35.9	43.4	236	0.0	0.65	1.0
265	231	236	0.0	0.65	1.0	62.0	-4.2	-52.3	52.5	265	0.0	0.82	1.0	74.1	-26.4	-33.8	43.1	232	0.0	0.633	1.0	0.0	0.797	1.0	72.4	-23.5	-36.3	43.4	237	0.0	0.633	1.0
268	232	237	0.0	0.633	1.0	60.9	-1.5	-53.9	53.9	268	0.0	0.815	1.0	73.7	-25.9	-34.3	43.1	233	0.0	0.617	1.0	0.0	0.792	1.0	72.1	-23.0	-36.8	43.5	237	0.0	0.617	1.0
270	233	237	0.0	0.616	1.0	59.7	0.8	-55.6	55.7	270	0.0	0.81	1.0	73.4	-25.3	-34.9	43.2	234	0.0	0.6	1.0	0.0	0.788	1.0	71.8	-22.4	-37.2	43.6	238	0.0	0.6	1.0
272	234	238	0.0	0.6	1.0	58.6	2.9	-57.7	57.8	272	0.0	0.806	1.0	73.1	-24.7	-35.4	43.3	235	0.0	0.583	1.0	0.0	0.784	1.0	71.5	-21.8	-37.6	43.6	239	0.0	0.583	1.0
274	235	239	0.0	0.583	1.0	57.4	5.1	-59.7	59.9	274	0.0	0.801	1.0	72.8	-24.1	-35.8	43.4	236	0.0	0.567	1.0	0.0	0.78	1.0	71.2	-21.3	-38.0	43.7	240	0.0	0.567	1.0
276	236	240	0.0	0.566	1.0	56.3	7.4	-61.6	62.1	276	0.0	0.797	1.0	72.4	-23.6	-36.3	43.4	237	0.0	0.55	1.0	0.0	0.776	1.0	70.9	-20.7	-38.4	43.8	241	0.0	0.55	1.0
278	237	241	0.0	0.55	1.0	55.2	10.0	-63.6	64.2	278	0.0	0.792	1.0	72.1	-23.0	-36.8	43.5	238	0.0	0.533	1.0	0.0	0.772	1.0	70.6	-20.1	-38.8	43.8	242	0.0	0.533	1.0
280	238	242	0.0	0.533	1.0	54.0	12.6	-65.2	66.4	280	0.0	0.788	1.0	71.8	-22.3	-37.2	43.6	239	0.0	0.517	1.0	0.0	0.767	1.0	70.3	-19.5	-39.2	43.9	243	0.0	0.517	1.0
283	239	243	0.0	0.516	1.0	52.9	15.4	-66.8	68.5	283	0.0	0.783	1.0	71.5	-21.7	-37.7	43.6	240	0.0	0.5	1.0	0.0	0.763	1.0	70.1	-18.9	-39.5	44.0	244	0.0	0.5	1.0
285	240	244	0.0	0.5	1.0	51.7	18.3	-68.3	70.7	285	0.0	0.779	1.0	71.1	-21.1	-38.1	43.7	241	0.0	0.483	1.0	0.0	0.759	1.0	69.8	-18.3	-39.9	44.0	245	0.0	0.483	1.0
286	241	245	0.0	0.483	1.0	50.7	20.6	-70.2	73.2	286	0.0	0.774	1.0	70.8	-20.5	-38.6	43.8	242	0.0	0.467	1.0	0.0	0.755	1.0	69.5	-17.7	-40.2	44.1	246	0.0	0.467	1.0
287	242	246	0.0	0.466	1.0	49.6	22.9	-72.1	75.7	287	0.0	0.769	1.0	70.5	-19.8	-39.0	43.9	243	0.0	0.45	1.0	0.0	0.751	1.0	69.2	-17.1	-40.6	44.2	247	0.0	0.45	1.0
288	243	247	0.0	0.45	1.0	48.6	25.4	-74.0	78.2	288	0.0	0.765	1.0	70.2	-19.2	-39.4	43.9	244	0.0	0.433	1.0	0.0	0.746	1.0	68.8	-16.6	-41.2	44.5	248	0.0	0.433	1.0
290	244	248	0.0	0.433	1.0	47.5	28.0	-75.7	80.7	290	0.0	0.76	1.0	69.8	-18.5	-39.8	44.0	245	0.0	0.417	1.0	0.0	0.741	1.0	68.5	-16.1	-41.8	45.0	248	0.0	0.417	1.0
291	245	248	0.0	0.416	1.0	46.5	30.6	-77.4	83.2	291	0.0	0.756	1.0	69.5	-17.8	-40.2	44.1	246	0.0	0.4	1.0	0.0	0.736	1.0	68.1	-15.5	-42.5	45.4	249	0.0	0.4	1.0
292	246	249	0.0	0.4	1.0	45.4	33.3	-79.0	85.7	292	0.0	0.751	1.0	69.2	-17.2	-40.6	44.2	247	0.0	0.383	1.0	0.0	0.731	1.0	67.8	-15.0	-43.1	45.8	250	0.0	0.383	1.0
294	247	250	0.0	0.383	1.0	44.3	36.2	-80.5	88.2	294	0.0	0.746	1.0	68.8	-16.6	-41.2	44.5	248	0.0	0.367	1.0	0.0	0.726	1.0	67.4	-14.4	-43.8	46.2	251	0.0	0.367	1.0
295	248	251	0.0	0.366	1.0	43.4	38.7	-82.0	90.7	295	0.0	0.74	1.0	68.4	-16.0	-41.9	45.0	249	0.0	0.35	1.0	0.0	0.721	1.0	67.0	-13.9	-44.4	46.6	252	0.0	0.35	1.0
296	249	252	0.0	0.35	1.0	42.5	41.0	-83.6	93.2	296	0.0	0.735	1.0	68.0	-15.4	-42.6	45.5	250	0.0	0.333	1.0	0.0	0.716	1.0	66.7	-13.3	-45.0	47.1	253	0.0	0.333	1.0
296	250	253	0.0																													

Siehe ähnliche Dateien: <http://130.149.60.45/~farbmetrik/QG11/QG11LONA.TXT> /PS
Technische Information: <http://www.ps.bam.de> oder <http://130.149.60.45/~farbmetrik>

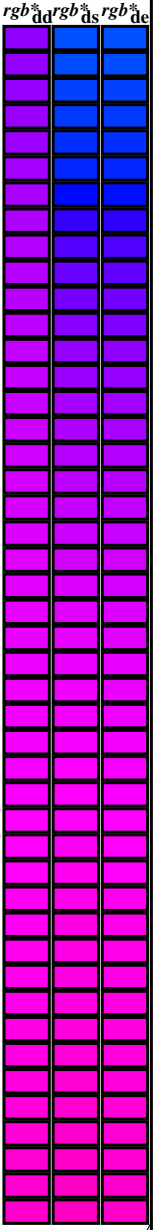
TUB-Registrierung: 20130201-QG11/QG11LONA.TXT /PS TUB-Material: Code=rh4ta
Anwendung für Messung von Display-Ausgabe, keine Separation

Daten der Maximalfarbe M im Farbmetrik-System sRGB Norm-Gerät; keine Separation, D65 für Ein- oder Ausgabe; Sechs Bunttonwinkel der 60-Grad Standardfarbener RYGBM_s; h_{ab,ds} = 30.0, 90.0, 150.0, 210.0, 270.0, 330.0;
Sechs Bunttonwinkel der Gerätefarben RYGBM_d; h_{ab,d} = 40.0, 102.9, 136.0, 196.4, 306.3, 328.2; Sechs Bunttonwinkel der Elementarfarben RYGBM_e; h_{ab,e} = 25.5, 92.3, 162.2, 217.0, 271.7, 328.6

h _{ab,d}	h _{ab,s}	h _{ab,e}	rgb [*] dd361M	LAB [*] ddx361Mi (x=LabCh)	rgb [*] ds361Mi	LAB [*] dsx361Mi (x=LabCh)	rgb [*] dd361Mi	LAB [*] de361Mi	rgb [*] dex361Mi (x=LabCh)	rgb [*] dd361Mi	LAB [*] de361Mi	rgb [*] ds361Mi	LAB [*] dsx361Mi (x=LabCh)	rgb [*] dd361Mi	LAB [*] de361Mi	rgb [*] dex361Mi (x=LabCh)	rgb [*] dd361Mi	LAB [*] de361Mi																													
301	255	258	0.0	0.25 1.0	37.1	55.9	-92.3	107.9	301	0.0	0.25 1.0	66.1	-12.3	-46.0	47.8	255	0.0	0.25 1.0	0.0	0.25 1.0	64.9	-10.1	-48.0	49.2	258	0.0	0.25 1.0	0.0	0.685	1.0	64.6	-9.4	-48.6	49.6	258	0.0	0.233 1.0	0.0	0.685	1.0	64.6	-9.4	-48.6	49.6	258	0.0	0.233 1.0
301	256	258	0.0	0.233 1.0	36.5	57.6	-93.4	109.7	301	0.0	0.233 1.0	65.7	-11.6	-46.7	48.2	256	0.0	0.233 1.0	0.0	0.217 1.0	64.2	-8.7	-49.1	50.0	259	0.0	0.217 1.0	0.0	0.68 1.0	64.2	-8.7	-49.1	50.0	259	0.0	0.217 1.0											
302	257	259	0.0	0.216 1.0	35.9	59.4	-94.5	111.6	302	0.0	0.216 1.0	65.3	-10.9	-47.3	48.7	257	0.0	0.217 1.0	0.0	0.68 1.0	64.2	-8.7	-49.1	50.0	259	0.0	0.217 1.0	0.0	0.675 1.0	63.8	-8.0	-49.7	50.4	260	0.0	0.2 1.0											
302	258	260	0.0	0.2 1.0	35.2	61.2	-95.5	113.5	302	0.0	0.2 1.0	64.9	-10.1	-48.0	49.1	258	0.0	0.2 1.0	0.0	0.675 1.0	63.8	-8.0	-49.7	50.4	260	0.0	0.2 1.0	0.0	0.67 1.0	63.5	-7.2	-50.2	50.9	261	0.0	0.183 1.0											
303	259	261	0.0	0.183 1.0	34.6	63.0	-96.6	115.3	303	0.0	0.183 1.0	64.5	-9.4	-48.6	49.6	259	0.0	0.183 1.0	0.0	0.67 1.0	63.5	-7.2	-50.2	50.9	261	0.0	0.183 1.0	0.0	0.665 1.0	63.1	-6.5	-50.8	51.3	262	0.0	0.167 1.0											
303	260	262	0.0	0.166 1.0	34.0	64.8	-97.6	117.2	303	0.0	0.166 1.0	64.2	-8.6	-49.2	50.1	260	0.0	0.167 1.0	0.0	0.665 1.0	63.1	-6.5	-50.8	51.3	262	0.0	0.167 1.0	0.0	0.66 1.0	62.8	-5.7	-51.3	51.7	263	0.0	0.15 1.0											
304	261	263	0.0	0.15 1.0	33.4	66.7	-98.6	119.1	304	0.0	0.15 1.0	63.8	-7.8	-49.8	50.5	261	0.0	0.15 1.0	0.0	0.66 1.0	62.8	-5.7	-51.3	51.7	263	0.0	0.15 1.0	0.0	0.655 1.0	62.4	-5.0	-51.8	52.1	264	0.0	0.133 1.0											
304	262	264	0.0	0.133 1.0	32.8	68.6	-99.6	120.9	304	0.0	0.133 1.0	63.4	-7.0	-50.4	51.0	262	0.0	0.133 1.0	0.0	0.655 1.0	62.4	-5.0	-51.8	52.1	264	0.0	0.133 1.0	0.0	0.65 1.0	62.1	-4.2	-52.3	52.5	265	0.0	0.117 1.0											
304	263	265	0.0	0.116 1.0	32.3	70.0	-100.3	122.3	304	0.0	0.116 1.0	63.0	-6.2	-51.0	51.5	263	0.0	0.117 1.0	0.0	0.65 1.0	62.1	-4.2	-52.3	52.5	265	0.0	0.117 1.0	0.0	0.645 1.0	61.7	-3.4	-52.8	53.0	266	0.0	0.1 1.0											
305	264	266	0.0	0.1 1.0	32.0	70.8	-100.8	123.2	305	0.0	0.1 1.0	62.6	-5.3	-51.5	51.9	264	0.0	0.1 1.0	0.0	0.645 1.0	61.7	-3.4	-52.8	53.0	266	0.0	0.1 1.0	0.0	0.64 1.0	61.4	-2.5	-53.2	53.4	267	0.0	0.083 1.0											
305	265	267	0.0	0.083 1.0	31.7	71.7	-101.2	124.1	305	0.0	0.083 1.0	62.2	-4.5	-52.1	52.4	265	0.0	0.083 1.0	0.0	0.64 1.0	61.4	-2.5	-53.2	53.4	267	0.0	0.083 1.0	0.0	0.635 1.0	61.0	-1.7	-53.7	53.8	268	0.0	0.067 1.0											
305	266	268	0.0	0.066 1.0	31.5	72.5	-101.7	124.9	305	0.0	0.066 1.0	61.8	-3.6	-52.6	52.8	266	0.0	0.067 1.0	0.0	0.635 1.0	61.0	-1.7	-53.7	53.8	268	0.0	0.067 1.0	0.0	0.63 1.0	60.6	-0.8	-54.1	54.2	269	0.0	0.05 1.0											
305	267	269	0.0	0.049 1.0	31.2	73.4	-102.2	125.8	305	0.0	0.049 1.0	61.4	-2.7	-53.1	53.3	267	0.0	0.05 1.0	0.0	0.63 1.0	60.6	-0.8	-54.1	54.2	269	0.0	0.05 1.0	0.0	0.624 1.0	60.3	0.0	-54.6	54.7	269	0.0	0.033 1.0											
305	268	269	0.0	0.033 1.0	30.9	74.3	-102.6	126.7	305	0.0	0.033 1.0	61.0	-1.8	-53.6	53.8	268	0.0	0.033 1.0	0.0	0.624 1.0	60.3	0.0	-54.6	54.7	269	0.0	0.033 1.0	0.0	0.617 1.0	59.8	0.8	-55.6	55.7	270	0.0	0.017 1.0											
306	269	270	0.0	0.016 1.0	30.6	75.1	-103.1	127.6	306	0.0	0.016 1.0	60.6	-0.8	-54.1	54.2	269	0.0	0.017 1.0	0.0	0.617 1.0	59.8	0.8	-55.6	55.7	270	0.0	0.017 1.0	0.0	0.609 1.0	59.3	1.7	-56.5	56.6	271	0.0	0.0 1.0											
306	270	271	0.0	0.0 1.0	30.3	76.0	-103.5	128.5	306	0.0	0.0 1.0	60.2	0.0	-54.7	54.8	270	0.0	0.0 1.0	0.0	0.609 1.0	59.3	1.7	-56.5	56.6	271	0.0	0.0 1.0	0.0	0.602 1.0	58.7	2.7	-57.5	57.6	272	0.017	0.0 1.0											
306	271	272	0.016	0.0 1.0	30.4	76.0	-103.4	128.4	306	0.0	0.016 1.0	59.7	1.0	-55.7	55.9	271	0.017	0.0 1.0	0.0	0.602 1.0	58.7	2.7	-57.5	57.6	272	0.017	0.0 1.0	0.0	0.594 1.0	58.2	3.7	-58.4	58.6	273	0.033	0.0 1.0											
306	272	273	0.033	0.0 1.0	30.5	76.1	-103.3	128.3	306	0.0	0.033 0.0 1.0	59.1	2.0	-56.8	56.9	272	0.033	0.0 1.0	0.0	0.594 1.0	58.2	3.7	-58.4	58.6	273	0.033	0.0 1.0	0.0	0.586 1.0	57.7	4.8	-59.4	59.7	274	0.05 0.0 1.0												
306	273	274	0.05	0.0 1.0	30.6	76.1	-103.1	128.2	306	0.0	0.05 0.0 1.0	58.5	3.0	-57.8	58.0	273	0.05	0.0 1.0	0.0	0.586 1.0	57.7	4.8	-59.4	59.7	274	0.05	0.0 1.0	0.0	0.578 1.0	57.1	5.8	-60.3	60.7	275	0.067	0.0 1.0											
306	274	275	0.066	0.0 1.0	30.7	76.1	-103.0	128.1	306	0.0	0.066 0.0 1.0	58.0	4.1	-58.8	59.0	274	0.067	0.0 1.0	0.0	0.578 1.0	57.1	5.8	-60.3	60.7	275	0.067	0.0 1.0	0.0	0.57 1.0	56.6	7.0	-61.2	61.7	276	0.083	0.0 1.0											
306	275	276	0.083	0.0 1.0	30.8	76.2	-102.8	128.0	306	0.0	0.083 0.0 1.0	57.4	5.2	-59.8	60.1	275	0.083	0.0 1.0	0.0	0.57 1.0	56.6	7.0	-61.2	61.7	276	0.083	0.0 1.0	0.0	0.563 1.0	56.1	8.1	-62.0	62.7	277	0.1 0.0 1.0												
306	276	277	0.1	0.0 1.0	30.9	76.2	-102.7	127.9	306	0.0	0.1 0.0 1.0	56.9	6.4	-60.7	61.2	276	0.1	0.0 1.0	0.0	0.563 1.0	56.1	8.1	-62.0	62.7	277	0.1	0.0 1.0	0.0	0.555 1.0	55.5	9.3	-62.9	63.7	278	0.117	0.0 1.0											
306	277	278	0.116	0.0 1.0	30.9	76.2	-102.5	127.8	306	0.0	0.116 0.0 1.0	56.3	7.6	-61.7	62.2	277	0.117	0.0 1.0	0.0	0.555 1.0	55.5	9.3	-62.9	63.7	278	0.117	0.0 1.0	0.0	0.547 1.0	55.0	10.5	-63.7	64.7	279	0.133	0.0 1.0											
306	278	279	0.133	0.0 1.0	31.1	76.3	-102.3	127.6	306	0.0	0.133 0.0 1.0	55.7	8.8	-62.6	63.3	278	0.133	0.0 1.0	0.0	0.547 1.0	55.0	10.5	-63.7	64.7	279	0.133	0.0 1.0	0.0	0.539 1.0	54.5	11.7	-64.5	65.7	280	0.15 0.0 1.0												
306	279	280	0.15	0.0 1.0	31.3	76.3	-101.9	127.4	306	0.0	0.15 0.0 1.0	55.2	10.1	-63.5	64.3	279	0.15	0.0 1.0	0.0	0.539 1.0	54.5	11.7	-64.5	65.7	280	0.15	0.0 1.0	0.0	0.531 1.0	53.9	13.0	-65.3	66.7	281	0.167	0.0 1.0											
306	280	281	0.166	0.0 1.0	31.5	76.4	-101.6	127.1	306	0.0	0.166 0.0 1.0	54.6	11.4	-64.3	65.4	280	0.167	0.0 1.0	0.0	0.531 1.0	53.9	13.0	-65.3	66.7	281	0.167	0.0 1.0	0.0	0.524 1.0	53.4	14.3	-66.1	67.7	282	0.183	0.0 1.0											
307	281	282	0.183	0.0 1.0	31.7	76.5	-101.2	126.9	307	0.0	0.183 0.0 1.0	54.1	12.7	-65.1	66.5	281	0.183	0.0 1.0	0.0	0.524 1.0	53.4	14.3	-66.1	67.7	282	0.183	0.0 1.0	0.0	0.516 1.0	52.9	15.6	-66.8	68.7	283	0.2 0.0 1.0												
307	282	283	0.2	0.0 1.0	31.9	76.6	-100.9	126.7	307	0.0	0.2 0.0 1.0	53.5	14.0	-66.0	67.5	282	0.2	0.0 1.0	0.0	0.516 1.0	52.9	15.6	-66.8	68.7	283	0.2	0.0 1.0	0.0	0.508 1.0	52.3	16.9	-67.5	69.7	284	0.217	0.0 1.0											
307	283	284	0.216	0.0 1.0	32.1	76.6	-100.5	126.4	307	0.0	0.216 0.0 1.0	52.9	15.4	-66.7	68.6	283	0.217	0.0 1.0	0.0	0.508 1.0	52.3	16.9	-67.5	69.7	284	0.217	0.0 1.0	0.0	0.488 1.0	51.0	19.9	-69.6	72.5	285	0.25 0.0 1.0												
307	284	285	0.233	0.0 1.0	32.3	76.7	-100.1	126.2	307	0.0	0.233 0.0 1.0	52.4	16.9	-67.5	69.7	284	0.233	0.0 1.0	0.0	0.5 1.0	51.8	18.3	-68.2	70.7	285	0.233	0.0 1.0	0.0	0.488 1.0	51.0	19.9	-69.6	72.5	285	0.25 0.0 1.0												
307	285	285	0.25	0.0 1.0	32.6	76.8	-99.8	125.9	307	0.0	0.25 0.0 1.0	51.8	18.3	-68.2	70.7	285	0.25	0.0 1.0	0.0	0.488 1.0	51.0	19.9	-69.6	72.5	285	0.25	0.0 1.0	0.0	0.476 1.0	50.3	21.6	-71.0	74.3	286	0.267	0.0 1.0											
307	286	286	0.266	0.0 1.0	32.9	77.0	-99.2	125.6	307	0.0	0.266 0.0 1.0	51.0	20.0	-69																																	

Daten der Maximalfarbe M im Farbmetrik-System sRGB Norm-Gerät; keine Separation, D65 für Ein- oder Ausgabe; Sechs Bunttonwinkel der 60-Grad Standardfarbton RYGBM_s; h_{ab,ds} = 30.0, 90.0, 150.0, 210.0, 270.0, 330.0; Sechs Bunttonwinkel der Gerätefarben RYGBM_d: h_{ab,d} = 40.0, 102.9, 136.0, 196.4, 306.3, 328.2; Sechs Bunttonwinkel der Elementarfarben RYGBM_c: h_{ab,c} = 25.5, 92.3, 162.2, 217.0, 271.7, 328.6

Table with columns: h_{ab,d}, h_{ab,s}, h_{ab,c}, r_{gb}*_dd361M, LAB*_*_ddx361Mi (x=LabCh), r_{gb}*_*_ds361Mi, LAB*_*_dsx361Mi (x=LabCh), r_{gb}*_*_dd361Mi, r_{gb}*_*_dc361Mi, LAB*_*_dex361Mi (x=LabCh), r_{gb}*_*_dd361Mi. Rows 311-341.



Siehe ähnliche Dateien: http://130.149.60.45/~farbmetrik/QG11/QG11.HTM Technische Information: http://www.ps.bam.de oder http://130.149.60.45/~farbmetrik

TUB-Registrierung: 20130201-QG11/QG11LONA.TXT /PS TUB-Material: Code=rh4ta Anwendung für Messung von Display-Ausgabe, keine Separation

Daten der Maximalfarbe M im Farbmetrik-System sRGB Norm-Gerät; keine Separation, D65 für Ein- oder Ausgabe; Sechs Bunttonwinkel der 60-Grad Standardfarben RYGBM_s; h_{ab,ds} = 30.0, 90.0, 150.0, 210.0, 270.0, 330.0; Sechs Bunttonwinkel der Gerätefarben RYGBM_d; h_{ab,d} = 40.0, 102.9, 136.0, 196.4, 306.3, 328.2; Sechs Bunttonwinkel der Elementarfarben RYGBM_c; h_{ab,c} = 25.5, 92.3, 162.2, 217.0, 271.7, 328.6

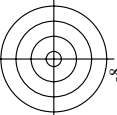
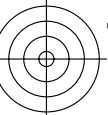
h _{ab,d}	h _{ab,s}	h _{ab,e}	rgb [*] _{dd361M}	LAB [*] _{ddx361Mi (x=LabCh)}	rgb [*] _{ds361Mi}	LAB [*] _{dsx361Mi (x=LabCh)}	rgb [*] _{dd361Mi}	LAB [*] _{de361Mi}	rgb [*] _{dex361Mi (x=LabCh)}	rgb [*] _{dd361Mi}	LAB [*] _{dd361Mi}	rgb [*] _{dd361Mi}	rgb [*] _{dd}	rgb [*] _{ds}	rgb [*] _{de}																				
341	345	342	1.0	0.0	0.75	54.2	86.7	-28.6	91.3	341	1.0	0.0	0.707	53.8	86.0	-23.0	89.1	345	1.0	0.0	0.75	1.0	0.0	0.75											
342	346	343	1.0	0.0	0.733	54.0	86.5	-26.4	90.4	342	1.0	0.0	0.695	53.7	85.7	-21.3	88.4	346	1.0	0.0	0.733	1.0	0.0	0.723	54.0	86.3	-25.0	89.9	343	1.0	0.0	0.733			
344	347	344	1.0	0.0	0.716	53.8	86.2	-24.2	89.5	344	1.0	0.0	0.682	53.6	85.4	-19.6	87.7	347	1.0	0.0	0.717	1.0	0.0	0.711	53.8	86.1	-23.4	89.3	344	1.0	0.0	0.717			
345	348	345	1.0	0.0	0.7	53.7	85.8	-22.0	88.6	345	1.0	0.0	0.669	53.4	85.1	-18.0	87.0	348	1.0	0.0	0.7	1.0	0.0	0.699	53.7	85.8	-21.8	88.6	345	1.0	0.0	0.7			
346	349	346	1.0	0.0	0.683	53.5	85.4	-19.9	87.7	346	1.0	0.0	0.656	53.3	84.7	-16.4	86.3	349	1.0	0.0	0.683	1.0	0.0	0.687	53.6	85.6	-20.3	87.9	346	1.0	0.0	0.683			
348	350	347	1.0	0.0	0.666	53.4	85.0	-17.8	86.8	348	1.0	0.0	0.643	53.2	84.3	-14.8	85.6	350	1.0	0.0	0.667	1.0	0.0	0.674	53.5	85.2	-18.7	87.3	347	1.0	0.0	0.667			
349	351	348	1.0	0.0	0.65	53.2	84.5	-15.7	85.9	349	1.0	0.0	0.63	53.1	83.9	-13.2	84.9	351	1.0	0.0	0.65	1.0	0.0	0.662	53.4	84.9	-17.2	86.6	348	1.0	0.0	0.65			
350	352	349	1.0	0.0	0.633	53.0	83.9	-13.6	85.0	350	1.0	0.0	0.619	53.0	83.6	-11.7	84.4	352	1.0	0.0	0.633	1.0	0.0	0.65	53.3	84.5	-15.6	86.0	349	1.0	0.0	0.633			
352	353	350	1.0	0.0	0.616	52.9	83.4	-11.4	84.3	352	1.0	0.0	0.608	52.9	83.5	-10.2	84.2	353	1.0	0.0	0.617	1.0	0.0	0.638	53.1	84.1	-14.1	85.3	350	1.0	0.0	0.617			
353	354	351	1.0	0.0	0.6	52.8	83.6	-9.1	83.9	353	1.0	0.0	0.597	52.8	83.4	-8.7	83.9	354	1.0	0.0	0.6	1.0	0.0	0.626	53.0	83.7	-12.6	84.7	351	1.0	0.0	0.6			
355	355	352	1.0	0.0	0.583	52.7	83.2	-6.9	83.5	355	1.0	0.0	0.586	52.7	83.3	-7.2	83.6	355	1.0	0.0	0.583	1.0	0.0	0.615	52.9	83.6	-11.2	84.4	352	1.0	0.0	0.583			
356	356	353	1.0	0.0	0.566	52.5	82.9	-4.6	83.0	356	1.0	0.0	0.575	52.6	83.1	-5.7	83.3	356	1.0	0.0	0.567	1.0	0.0	0.605	52.9	83.5	-9.8	84.1	353	1.0	0.0	0.567			
358	357	354	1.0	0.0	0.55	52.4	82.5	-2.4	82.6	358	1.0	0.0	0.564	52.6	82.9	-4.2	83.0	357	1.0	0.0	0.55	1.0	0.0	0.595	52.8	83.4	-8.4	83.8	354	1.0	0.0	0.55			
359	358	355	1.0	0.0	0.533	52.3	82.1	-0.1	82.1	359	1.0	0.0	0.554	52.5	82.7	-2.8	82.7	358	1.0	0.0	0.533	1.0	0.0	0.584	52.7	83.2	-7.0	83.5	355	1.0	0.0	0.533			
361	359	356	1.0	0.0	0.516	52.1	81.6	2.0	81.7	361	1.0	0.0	0.543	52.4	82.4	-1.3	82.4	359	1.0	0.0	0.517	1.0	0.0	0.574	52.6	83.1	-5.6	83.3	356	1.0	0.0	0.517			
362	360	352	1.0	0.0	0.5	52.0	81.1	4.1	81.2	362	1.0	0.0	0.532	52.3	82.1	0.0	82.1	360	1.0	0.0	0.5	1.0	0.0	0.618	53.0	83.6	-11.6	84.4	352	1.0	0.0	0.5			
364	361	353	1.0	0.0	0.483	51.9	81.1	6.5	81.3	364	1.0	0.0	0.521	52.2	81.8	1.4	81.8	361	1.0	0.0	0.483	1.0	0.0	0.606	52.9	83.5	-9.9	84.1	353	1.0	0.0	0.483			
366	362	354	1.0	0.0	0.466	51.8	81.0	8.8	81.5	366	1.0	0.0	0.51	52.1	81.5	2.8	81.6	362	1.0	0.0	0.467	1.0	0.0	0.594	52.8	83.4	-8.2	83.8	354	1.0	0.0	0.467			
367	363	355	1.0	0.0	0.45	51.7	80.8	11.1	81.6	367	1.0	0.0	0.499	52.1	81.2	4.3	81.3	363	1.0	0.0	0.45	1.0	0.0	0.582	52.7	83.2	-6.6	83.5	355	1.0	0.0	0.45			
369	364	356	1.0	0.0	0.433	51.6	80.6	13.5	81.7	369	1.0	0.0	0.489	52.0	81.2	5.7	81.4	364	1.0	0.0	0.433	1.0	0.0	0.57	52.6	83.0	-5.0	83.1	356	1.0	0.0	0.433			
371	365	357	1.0	0.0	0.416	51.5	80.3	15.8	81.8	371	1.0	0.0	0.479	51.9	81.1	7.1	81.4	365	1.0	0.0	0.417	1.0	0.0	0.558	52.5	82.7	-3.3	82.8	357	1.0	0.0	0.417			
372	366	358	1.0	0.0	0.4	51.4	79.9	18.1	81.9	372	1.0	0.0	0.469	51.9	81.1	8.5	81.5	366	1.0	0.0	0.4	1.0	0.0	0.546	52.4	82.5	-1.7	82.5	358	1.0	0.0	0.4			
374	367	359	1.0	0.0	0.383	51.4	79.5	20.4	82.1	374	1.0	0.0	0.459	51.8	81.0	9.9	81.6	367	1.0	0.0	0.383	1.0	0.0	0.533	52.3	82.2	-0.1	82.2	359	1.0	0.0	0.383			
376	368	360	1.0	0.0	0.366	51.3	79.3	22.7	82.5	376	1.0	0.0	0.449	51.8	80.9	11.4	81.6	368	1.0	0.0	0.367	1.0	0.0	0.521	52.2	81.8	1.4	81.9	360	1.0	0.0	0.367			
377	369	362	1.0	0.0	0.35	51.2	79.3	25.1	83.2	377	1.0	0.0	0.439	51.7	80.7	12.8	81.7	369	1.0	0.0	0.35	1.0	0.0	0.509	52.1	81.5	3.0	81.5	362	1.0	0.0	0.35			
379	370	363	1.0	0.0	0.333	51.1	79.2	27.4	83.8	379	1.0	0.0	0.429	51.7	80.6	14.2	81.8	370	1.0	0.0	0.333	1.0	0.0	0.497	52.1	81.2	4.5	81.3	363	1.0	0.0	0.333			
380	371	364	1.0	0.0	0.316	51.1	79.1	29.7	84.5	380	1.0	0.0	0.418	51.6	80.4	15.6	81.9	371	1.0	0.0	0.317	1.0	0.0	0.486	52.0	81.1	6.1	81.4	364	1.0	0.0	0.317			
382	372	365	1.0	0.0	0.3	51.0	78.9	32.1	85.2	382	1.0	0.0	0.408	51.5	80.1	17.0	81.9	372	1.0	0.0	0.3	1.0	0.0	0.475	51.9	81.1	7.7	81.5	365	1.0	0.0	0.3			
383	373	366	1.0	0.0	0.283	51.0	78.7	34.4	85.9	383	1.0	0.0	0.398	51.5	79.9	18.4	82.0	373	1.0	0.0	0.283	1.0	0.0	0.464	51.9	81.0	9.3	81.5	366	1.0	0.0	0.283			
385	374	367	1.0	0.0	0.266	50.9	78.3	36.8	86.6	385	1.0	0.0	0.388	51.4	79.6	19.9	82.1	374	1.0	0.0	0.267	1.0	0.0	0.452	51.8	80.9	10.9	81.6	367	1.0	0.0	0.267			
386	375	368	1.0	0.0	0.25	50.8	77.9	39.2	87.2	386	1.0	0.0	0.378	51.4	79.4	21.3	82.2	375	1.0	0.0	0.25	1.0	0.0	0.441	51.7	80.7	12.5	81.7	368	1.0	0.0	0.25			
387	376	369	1.0	0.0	0.233	50.8	78.0	41.2	88.2	387	1.0	0.0	0.367	51.3	79.3	22.7	82.5	376	1.0	0.0	0.233	1.0	0.0	0.43	51.7	80.6	14.0	81.8	369	1.0	0.0	0.233			
389	377	370	1.0	0.0	0.216	50.8	78.0	43.3	89.2	389	1.0	0.0	0.356	51.3	79.3	24.3	82.9	377	1.0	0.0	0.217	1.0	0.0	0.418	51.6	80.4	15.6	81.9	370	1.0	0.0	0.217			
390	378	372	1.0	0.0	0.2	50.7	78.0	45.4	90.2	390	1.0	0.0	0.345	51.2	79.3	25.8	83.4	378	1.0	0.0	0.2	1.0	0.0	0.407	51.5	80.1	17.2	81.9	372	1.0	0.0	0.2			
391	379	373	1.0	0.0	0.183	50.7	77.9	47.5	91.2	391	1.0	0.0	0.334	51.2	79.3	27.3	83.8	379	1.0	0.0	0.183	1.0	0.0	0.396	51.5	79.9	18.8	82.0	373	1.0	0.0	0.183			
392	380	374	1.0	0.0	0.166	50.6	77.8	49.6	92.2	392	1.0	0.0	0.323	51.2	79.2	28.8	84.3	380	1.0	0.0	0.167	1.0	0.0	0.385	51.4	79.6	20.3	82.1	374	1.0	0.0	0.167			
393	381	375	1.0	0.0	0.15	50.6	77.6	51.9	93.3	393	1.0	0.0	0.312	51.1	79.1	30.4	84.7	381	1.0	0.0	0.15	1.0	0.0	0.373	51.3	79.3	21.9	82.3	375	1.0	0.0	0.15			
394	382	376	1.0	0.0	0.133	50.6	77.3	53.9	94.3	394	1.0	0.0	0.301	51.1	79.0	31.9	85.2	382	1.0	0.0	0.133	1.0	0.0	0.361	51.3	79.3	23.6	82.8	376	1.0	0.0	0.133			
395	383	377	1.0	0.0	0.116	50.5	77.2	55.6	95.1	395	1.0	0.0	0.291	51.0	78.8	33.5	85.6	383	1.0	0.0	0.117	1.0	0.0	0.349	51.3	79.3	25.3	83							

n/f	HC*Fd	RGB_Fd	icr_Fd	hsa_Fd	rgb*Fd	LabCh*Fd	LabCh**Fd	DF*Fd	hsa*Fd	rgb**Fd	LabCh**Fd	DF*Fd	hsa*Fd	rgb**Fd	LabCh**Fd
0/668	ROXY_100_100a	1.0	0.0	0.0	0.0	50.4	76.9	64.5	100.4	39.9	64.5	100.4	39.9	0.0	0.0
1/668	R25Y_100_100a	0.0	1.0	0.5	0.5	53.7	67.6	65.8	94.4	44.2	50.4	66.7	65.9	0.0	0.0
2/684	RSOY_100_100a	0.0	1.0	0.5	0.5	50.4	66.7	65.9	93.8	44.6	50.4	66.7	65.9	0.0	0.0
3/702	R75G_100_100a	0.0	1.0	0.5	0.5	63.6	41.3	71.0	82.2	59.7	71.0	82.2	59.7	0.0	0.0
4/720	YOOG_100_100a	0.0	1.0	0.5	0.5	78.2	80.6	80.6	77.2	9.8	90.7	80.3	82.9	0.0	0.0
5/558	Y25G_100_100a	0.0	1.0	0.5	0.5	92.6	-20.7	90.7	93.5	102.8	92.6	-20.7	90.7	0.0	0.0
6/396	Y50G_100_100a	0.0	1.0	0.5	0.5	88.7	-43.3	86.2	86.2	116.6	88.7	-43.3	86.2	0.0	0.0
7/234	Y75G_100_100a	0.0	1.0	0.5	0.5	85.7	-65.2	82.4	105.1	128.3	85.7	-65.2	82.4	0.0	0.0
8/72	GOEB_100_100a	0.0	1.0	0.5	0.5	84.0	-78.7	80.4	112.2	134.1	84.0	-78.7	80.4	0.0	0.0
9/72	GOEB_100_100a	0.0	1.0	0.5	0.5	83.6	-82.7	79.8	115.0	136.0	83.6	-82.7	79.8	0.0	0.0
10/76	GOEB_100_100a	0.0	1.0	0.5	0.5	83.6	-82.7	79.8	115.0	136.0	83.6	-82.7	79.8	0.0	0.0
11/440	G50B_100_100a	0.0	1.0	0.5	0.5	84.3	-73.7	44.9	86.6	148.6	84.3	-73.7	44.9	0.0	0.0
12/840	G50B_100_100a	0.0	1.0	0.5	0.5	86.8	-46.1	-13.5	48.1	196.3	86.8	-46.1	-13.5	0.0	0.0
13/8	B00M_100_100a	0.0	1.0	0.5	0.5	11.7	18.3	-68.3	70.7	285.0	11.7	18.3	-68.3	0.0	0.0
14/332	B25R_100_100a	0.0	1.0	0.5	0.5	30.3	76.0	-103.5	128.5	306.2	30.3	76.0	-103.5	0.0	0.0
15/656	B50R_100_100a	0.0	1.0	0.5	0.5	38.5	79.8	-89.7	120.1	311.6	38.5	79.8	-89.7	0.0	0.0
16/652	B75R_100_100a	0.0	1.0	0.5	0.5	57.2	94.3	-58.4	111.0	328.2	57.2	94.3	-58.4	0.0	0.0
17/648	ROXY_100_100a	1.0	0.0	0.5	0.5	50.4	76.9	64.5	100.4	39.9	50.4	76.9	64.5	0.0	0.0
18/688	ROXY_100_100a	1.0	0.5	0.5	0.5	72.9	38.4	32.2	50.2	40.0	72.9	38.4	32.2	0.0	0.0
19/706	RSOY_100_100a	1.0	0.5	0.5	0.5	79.5	20.6	35.5	41.1	59.7	79.5	20.6	35.5	0.0	0.0
20/724	YOOG_100_100a	1.0	0.5	0.5	0.5	94.0	-45.3	46.5	102.8	128.3	94.0	-45.3	46.5	0.0	0.0
21/562	Y50G_100_100a	0.75	0.0	0.5	0.5	90.5	-32.6	41.2	52.5	128.3	90.5	-32.6	41.2	0.0	0.0
22/400	G50B_100_100a	0.5	1.0	0.5	0.5	89.5	-41.3	39.9	57.5	136.0	89.5	-41.3	39.9	0.0	0.0
23/400	G50B_100_100a	0.5	1.0	0.5	0.5	62.8	-23.0	-51.7	38.0	40.0	62.8	-23.0	-51.7	0.0	0.0
24/688	B50R_100_100a	0.5	1.0	0.5	0.5	73.3	47.1	-29.2	55.4	328.2	73.3	47.1	-29.2	0.0	0.0
25/692	B50R_100_100a	1.0	0.5	0.5	0.5	72.9	38.4	32.2	50.2	40.0	72.9	38.4	32.2	0.0	0.0
26/688	ROXY_100_100a	1.0	0.5	0.5	0.5	49.0	25.2	49.0	38.4	32.2	49.0	25.2	49.0	0.0	0.0
27/506	ROXY_075_050a	0.75	0.25	0.75	0.5	0.5	0.5	0.5	0.5	0.5	0.5	0.5	0.5	0.5	0.5
28/524	RSOY_075_050a	0.75	0.25	0.75	0.5	0.5	0.5	0.5	0.5	0.5	0.5	0.5	0.5	0.5	0.5
29/542	YOOG_075_050a	0.75	0.25	0.75	0.5	0.5	0.5	0.5	0.5	0.5	0.5	0.5	0.5	0.5	0.5
30/380	Y50G_075_050a	0.25	0.75	0.25	0.75	0.5	0.5	0.5	0.5	0.5	0.5	0.5	0.5	0.5	0.5
31/218	GOEB_075_050a	0.25	0.75	0.25	0.75	0.5	0.5	0.5	0.5	0.5	0.5	0.5	0.5	0.5	0.5
32/222	G50B_075_050a	0.25	0.75	0.25	0.75	0.5	0.5	0.5	0.5	0.5	0.5	0.5	0.5	0.5	0.5
33/186	B00R_075_050a	0.25	0.75	0.25	0.75	0.5	0.5	0.5	0.5	0.5	0.5	0.5	0.5	0.5	0.5
34/510	B50R_075_050a	0.75	0.25	0.75	0.5	0.5	0.5	0.5	0.5	0.5	0.5	0.5	0.5	0.5	0.5
35/506	ROXY_075_050a	0.75	0.25	0.75	0.5	0.5	0.5	0.5	0.5	0.5	0.5	0.5	0.5	0.5	0.5
36/324	ROXY_050_050a	0.5	0.0	0.5	0.5	0.5	0.5	0.5	0.5	0.5	0.5	0.5	0.5	0.5	0.5
37/342	RSOY_050_050a	0.5	0.25	0.5	0.5	0.5	0.5	0.5	0.5	0.5	0.5	0.5	0.5	0.5	0.5
38/360	YOOG_050_050a	0.5	0.5	0.5	0.5	0.5	0.5	0.5	0.5	0.5	0.5	0.5	0.5	0.5	0.5
39/198	Y50G_050_050a	0.25	0.5	0.5	0.5	0.5	0.5	0.5	0.5	0.5	0.5	0.5	0.5	0.5	0.5
40/36	GOEB_050_050a	0.0	0.5	0.5	0.5	0.5	0.5	0.5	0.5	0.5	0.5	0.5	0.5	0.5	0.5
41/40	G50B_050_050a	0.0	0.5	0.5	0.5	0.5	0.5	0.5	0.5	0.5	0.5	0.5	0.5	0.5	0.5
42/4	B00R_050_050a	0.0	0.5	0.5	0.5	0.5	0.5	0.5	0.5	0.5	0.5	0.5	0.5	0.5	0.5
43/328	B50R_050_050a	0.5	0.0	0.5	0.5	0.5	0.5	0.5	0.5	0.5	0.5	0.5	0.5	0.5	0.5
44/324	ROXY_050_050a	0.5	0.0	0.5	0.5	0.5	0.5	0.5	0.5	0.5	0.5	0.5	0.5	0.5	0.5
45/0	NW_000a	0.0	0.0	0.0	0.0	0.0	0.0	0.0	0.0	0.0	0.0	0.0	0.0	0.0	0.0
46/91	NW_013a	0.125	0.125	0.125	0.125	0.125	0.125	0.125	0.125	0.125	0.125	0.125	0.125	0.125	0.125
47/182	NW_025a	0.25	0.25	0.25	0.25	0.25	0.25	0.25	0.25	0.25	0.25	0.25	0.25	0.25	0.25
48/273	NW_038a	0.375	0.375	0.375	0.375	0.375	0.375	0.375	0.375	0.375	0.375	0.375	0.375	0.375	0.375
49/364	NW_050a	0.5	0.5	0.5	0.5	0.5	0.5	0.5	0.5	0.5	0.5	0.5	0.5	0.5	0.5
50/455	NW_069a	0.625	0.625	0.625	0.625	0.625	0.625	0.625	0.625	0.625	0.625	0.625	0.625	0.625	0.625
51/546	NW_084a	0.75	0.75	0.75	0.75	0.75	0.75	0.75	0.75	0.75	0.75	0.75	0.75	0.75	0.75
52/637	NW_088a	0.875	0.875	0.875	0.875	0.875	0.875	0.875	0.875	0.875	0.875	0.875	0.875	0.875	0.875
53/728	NW_100a	1.0	1.0	1.0	1.0	1.0	1.0	1.0	1.0	1.0	1.0	1.0	1.0	1.0	1.0

Mittlere Farbdifferenz dieser Seite: delta E** = 6.5

Eingabe: rgb/cmyk -> rgbd
Ausgabe: Transfer nach rgbd

TUB-Prüfvorlage QG11; Bunttoncode: H*d=R50Yd
Farben und Farbabstände, ΔE*



<http://130.149.60.45/~farbmetrik/QG11/QG11LONA.TXT> /PS; Transfer Ausgabe
N: Keine 3D-Linearisierung (OL) in Datei (F) oder PS-Startup (S), Seite 16/29

<http://130.149.60.45/~farbmetrik/QG11/QG11LONA.TXT> /PS; Transfer Ausgabe
N: Keine 3D-Linearisierung (OL) in Datei (F) oder PS-Startup (S), Seite 16/29



m/F	HC*Fid	rgb*Fid	ie*Fid	hs*Fid	rgb*Fid	LabCH*Fid	rgb*Fid	DF*Fid	hs*Fid	rgb*Fid	LabCH*Fid
0	0	0	0	0	0	0	0	0	0	0	0
1	NV	0004	0	0	0	0	0	0	0	0	0
2	BOOR	012_0124	0	0	0	0	0	0	0	0	0
3	BOOR	025_0254	0	0	0	0	0	0	0	0	0
4	BOOR	037_0374	0	0	0	0	0	0	0	0	0
5	BOOR	050_0504	0	0	0	0	0	0	0	0	0
6	BOOR	062_0624	0	0	0	0	0	0	0	0	0
7	BOOR	075_0754	0	0	0	0	0	0	0	0	0
8	BOOR	087_0874	0	0	0	0	0	0	0	0	0
9	BOOR	100_1004	0	0	0	0	0	0	0	0	0
10	BOOR	012_0124	0	0	0	0	0	0	0	0	0
11	G7SB	025_0254	0	0	0	0	0	0	0	0	0
12	G7SB	037_0374	0	0	0	0	0	0	0	0	0
13	G8BB	050_0504	0	0	0	0	0	0	0	0	0
14	G9BB	062_0624	0	0	0	0	0	0	0	0	0
15	G9BB	075_0754	0	0	0	0	0	0	0	0	0
16	G9BB	087_0874	0	0	0	0	0	0	0	0	0
17	G9BB	100_1004	0	0	0	0	0	0	0	0	0
18	G9BB	025_0254	0	0	0	0	0	0	0	0	0
19	G9BB	037_0374	0	0	0	0	0	0	0	0	0
20	G9BB	050_0504	0	0	0	0	0	0	0	0	0
21	G9BB	062_0624	0	0	0	0	0	0	0	0	0
22	G9BB	075_0754	0	0	0	0	0	0	0	0	0
23	G9BB	087_0874	0	0	0	0	0	0	0	0	0
24	G9BB	100_1004	0	0	0	0	0	0	0	0	0
25	G9BB	025_0254	0	0	0	0	0	0	0	0	0
26	G9BB	037_0374	0	0	0	0	0	0	0	0	0
27	G9BB	050_0504	0	0	0	0	0	0	0	0	0
28	G9BB	062_0624	0	0	0	0	0	0	0	0	0
29	G9BB	075_0754	0	0	0	0	0	0	0	0	0
30	G9BB	087_0874	0	0	0	0	0	0	0	0	0
31	G9BB	100_1004	0	0	0	0	0	0	0	0	0
32	G9BB	025_0254	0	0	0	0	0	0	0	0	0
33	G9BB	037_0374	0	0	0	0	0	0	0	0	0
34	G9BB	050_0504	0	0	0	0	0	0	0	0	0
35	G9BB	062_0624	0	0	0	0	0	0	0	0	0
36	G9BB	075_0754	0	0	0	0	0	0	0	0	0
37	G9BB	087_0874	0	0	0	0	0	0	0	0	0
38	G9BB	100_1004	0	0	0	0	0	0	0	0	0
39	G9BB	025_0254	0	0	0	0	0	0	0	0	0
40	G9BB	037_0374	0	0	0	0	0	0	0	0	0
41	G9BB	050_0504	0	0	0	0	0	0	0	0	0
42	G9BB	062_0624	0	0	0	0	0	0	0	0	0
43	G9BB	075_0754	0	0	0	0	0	0	0	0	0
44	G9BB	087_0874	0	0	0	0	0	0	0	0	0
45	G9BB	100_1004	0	0	0	0	0	0	0	0	0
46	G9BB	025_0254	0	0	0	0	0	0	0	0	0
47	G9BB	037_0374	0	0	0	0	0	0	0	0	0
48	G9BB	050_0504	0	0	0	0	0	0	0	0	0
49	G9BB	062_0624	0	0	0	0	0	0	0	0	0
50	G9BB	075_0754	0	0	0	0	0	0	0	0	0
51	G9BB	087_0874	0	0	0	0	0	0	0	0	0
52	G9BB	100_1004	0	0	0	0	0	0	0	0	0
53	G9BB	025_0254	0	0	0	0	0	0	0	0	0
54	G9BB	037_0374	0	0	0	0	0	0	0	0	0
55	G9BB	050_0504	0	0	0	0	0	0	0	0	0
56	G9BB	062_0624	0	0	0	0	0	0	0	0	0
57	G9BB	075_0754	0	0	0	0	0	0	0	0	0
58	G9BB	087_0874	0	0	0	0	0	0	0	0	0
59	G9BB	100_1004	0	0	0	0	0	0	0	0	0
60	G9BB	025_0254	0	0	0	0	0	0	0	0	0
61	G9BB	037_0374	0	0	0	0	0	0	0	0	0
62	G9BB	050_0504	0	0	0	0	0	0	0	0	0
63	G9BB	062_0624	0	0	0	0	0	0	0	0	0
64	G9BB	075_0754	0	0	0	0	0	0	0	0	0
65	G9BB	087_0874	0	0	0	0	0	0	0	0	0
66	G9BB	100_1004	0	0	0	0	0	0	0	0	0
67	G9BB	025_0254	0	0	0	0	0	0	0	0	0
68	G9BB	037_0374	0	0	0	0	0	0	0	0	0
69	G9BB	050_0504	0	0	0	0	0	0	0	0	0
70	G9BB	062_0624	0	0	0	0	0	0	0	0	0
71	G9BB	075_0754	0	0	0	0	0	0	0	0	0
72	G9BB	087_0874	0	0	0	0	0	0	0	0	0
73	G9BB	100_1004	0	0	0	0	0	0	0	0	0
74	G9BB	025_0254	0	0	0	0	0	0	0	0	0
75	G9BB	037_0374	0	0	0	0	0	0	0	0	0
76	G9BB	050_0504	0	0	0	0	0	0	0	0	0
77	G9BB	062_0624	0	0	0	0	0	0	0	0	0
78	G9BB	075_0754	0	0	0	0	0	0	0	0	0
79	G9BB	087_0874	0	0	0	0	0	0	0	0	0
80	G9BB	100_1004	0	0	0	0	0	0	0	0	0

QG1100-7N, Seite 16/29-F

TUB-Prüfvorlage QG11; Bunttoncode: H*d=R50Yd
Farben und Farbabstände, ΔE*

Eingabe: rgb/cmyk -> rgbd
Ausgabe: Transfer nach rgbd

Mittlere Farbdiffenz dieser Seite:

delta E* = 4.6

TUB-Registrierung: 20130201-QG11/QG11LONA.TXT / .PS TUB-Material: Code=rha4ta
Anwendung für Messung von Display-Ausgabe, keine Separation

Table with columns: n, HHC*Fd, rpb*Fd, iet*Fd, hsa*Fd, rpb*Fd, LabCh*Fd, LabCh*Fd, rpb*Fd, LabCh*Fd, DF*Fd, hsa*Fd, rpb*Fd, LabCh*Fd, LabCh*Fd. Rows list various color and grayscale calibration codes (e.g., R00Y, B2SK, B1SK, etc.) and their corresponding numerical values.

Eingabe: $rgb/cmyk \rightarrow rgbd$
Ausgabe: Transfer nach $rgbd$

Mittlere Farbdifferenz dieser Seite:
 $\Delta E^* = 8.3$

QG11005-7N, Seite 17/29-F
TUB-Prüfvorlage QG11; Bunttoncode: H*d=R50Yd
Farben und Farbabstände, ΔE^*

O-0031630-F0

TUB-Registrierung: 20130201-QG11/QG11LONA.TXT /PS TUB-Material: Code=rha4ta

Anwendung für Messung von Display-Ausgabe, keine Separation

Table with columns: n, HHC*Fd, rpb*Fd, icr*Fd, hsa*Fd, rpb*Fd, LabCh*Fd, rpb*Fd, LabCh*Fd, DF*Fd, hsa*Fd, rpb*Fd, LabCh*Fd, rpb*Fd, LabCh*Fd. Rows list various color and grayscale calibration targets.

Siehe ähnliche Dateien: http://130.149.60.45/~farbmetrik/QG11/QG11.HTM Technische Information: http://www.ps.bam.de oder http://130.149.60.45/~farbmetrik

Eingabe: rgb/cmyk -> rbgd Ausgabe: Transfer nach rbgd

Mittlere Farbdifferenz dieser Seite: delta E* = 10.2

QG1100-7N, Seite 18/29-F

TUB-Prüfvorlage QG11; Bunttoncode: H*d=R50Yd

Farben und Farbabstände, ΔE*

TUB-Registrierung: 20130201-QG11/QG11LONA.TXT /PS TUB-Material: Code=rha4ta
Anwendung für Messung von Display-Ausgabe, keine Separation

Table with 32 columns: n, HHC*Fd, Rgb*Fd, Ict*Fd, Hs*Fd, Rgb*Fd, LabCh*Fd, LabCh*Fd, Rgb*Fd, Rgb*Fd, LabCh*Fd, LabCh*Fd, Rgb*Fd, Rgb*Fd, LabCh*Fd, LabCh*Fd, Rgb*Fd, Rgb*Fd, LabCh*Fd, LabCh*Fd, Rgb*Fd, Rgb*Fd, LabCh*Fd, LabCh*Fd, Rgb*Fd, Rgb*Fd, LabCh*Fd, LabCh*Fd, Rgb*Fd, Rgb*Fd. The table contains numerical data for various color channels and components.

http://130.149.60.45/~farbmetrik/QG11/QG11LONA.TXT /PS; Transfer Ausgabe
N: Keine 3D-Linearisierung (OL) in Datei (F) oder PS-Startup (S), Seite 19/29
Siehe ähnliche Dateien: http://130.149.60.45/~farbmetrik/QG11/QG11.HTM
Technische Information: http://www.ps.bam.de oder http://130.149.60.45/~farbmetrik

Eingabe: rgb/cmyk -> rgb
Ausgabe: Transfer nach rgb

Mittlere Farbdifferenz dieser Seite: delta E* = 10.5

QG110--7N--Site, Seite 19/29-F
TUB-Prüfvorlage QG11; Bunttoncode: H*d=R50Yd
Farben und Farbabstände, ΔE*

O-0031830-F0
0-0031830-F0

TUB-Registrierung: 20130201-QG11/QG11LONA.TXT / .PS TUB-Material: Code=rha4ta
Anwendung für Messung von Display-Ausgabe, keine Separation

Table with columns: n, HHC*Fd, rpb*Fd, icr*Fd, hsa*Fd, rpb*Fd, LabCH*Fd, rpb*Fd, LabCH*Fd, DF*Fd, hsa*Fd, rpb*Fd, LabCH*Fd, rpb*Fd, LabCH*Fd. Rows list various color and grayscale patches (e.g., R00Y, R00M, R00C, etc.) and their corresponding colorimetric data.

TUB-Registrierung: 20130201-QG11/QG11LONA.TXT / .PS TUB-Material: Code=rha4ta
Anwendung für Messung von Display-Ausgabe, keine Separation

Table with columns: n, HHC*Fd, rpb_Fd, iet_Fd, hsa_Fd, rpb_Fd, LabCH*Fd, hsa_Fd, rpb_Fd, LabCH*Fd, DF*Fd, hsa_Fd, rpb_Fd, LabCH*Fd, rpb_Fd, LabCH*Fd. Rows list various color and grayscale patches (e.g., 729, 730, 731, 732, 733, 734, 735, 736, 737, 738, 739, 740, 741, 742, 743, 744, 745, 746, 747, 748, 749, 750, 751, 752, 753, 754, 755, 756, 757, 758, 759, 760, 761, 762, 763, 764, 765, 766, 767, 768, 769, 770, 771, 772, 773, 774, 775, 776, 777, 778, 779, 780, 781, 782, 783, 784, 785, 786, 787, 788, 789, 790, 791, 792, 793, 794, 795, 796, 797, 798, 799, 800, 801, 802, 803, 804, 805, 806, 807, 808, 809).

TUB-Registrierung: 20130201-QG11/QG11LONA.TXT / .PS TUB-Material: Code=rha4ta
Anwendung für Messung von Display-Ausgabe, keine Separation

Table with columns: n, HHC*Fd, rpb*Fd, iet*Fd, hsa*Fd, rpb*Fd, LabC*Fd, hsa*Fd, rpb*Fd, LabC*Fd, DF*Fd, hsa*Fd, rpb*Fd, LabC*Fd, hsa*Fd, rpb*Fd, LabC*Fd. Rows 810-890.

Eingabe: rgb/cmyk -> rgb
Ausgabe: Transfer nach rgb

Mittlere Farbdifferenz dieser Seite: delta E* = 8.7

QG11005-TN, Seite 26/29-F

TUB-Prüfvorlage QG11; Bunttoncode: H*d=R50Yd
Farben und Farbabstände, ΔE*

O-0032530-F0

TUB-Registrierung: 20130201-QG11/QG11LONA.TXT / .PS TUB-Material: Code=rha4ta
Anwendung für Messung von Display-Ausgabe, keine Separation

Table with columns: n, HHC*Fd, rpb*Fd, icr*Fd, hsa*Fd, rpb*Fd, LabCH*Fd, rpb*Fd, LabCH*Fd, DF*Fd, hsa*Fd, rpb*Fd, LabCH*Fd. Rows list various color calibration codes and their corresponding numerical values.

Siehe ähnliche Dateien: <http://130.149.60.45/~farbmetrik/QG11/QG11.HTM>
Technische Information: <http://www.ps.bam.de> oder <http://130.149.60.45/~farbmetrik>

Eingabe: rgb/cmyk -> rrgb
Ausgabe: Transfer nach rrgb

TUB-Prüfvorlage QG11; Bunttoncode: H*d=R50Yd
Farben und Farbabstände, ΔE*

QG1100-TN, Seite 27/29-F

0-0032630-F0

Mittlere Farbdifferenz dieser Seite: $\Delta E^* = 11.4$

