

see similar files: http://130.149.60.45/~farbmetrik/QE73/QE73.HTM
technical information: http://www.ps.bam.de or http://130.149.60.45/~farbmetrik

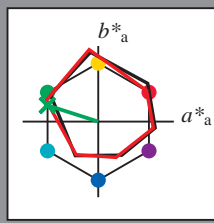
TUB registration: 20130201-QE73/QE73L0NP.PDF /PS
application for measurement of offset print output, separationcmykn6 (CMYK)
TUB material: code=rhadata

Input and Output: Offset Reflective System ORS18a for relative CIELAB hue $h_{ab,a,rel} = h_{ab}/360 = 162/360 = 0.45$

Data for any device (d) or elementary (e) colour:
 HIC^*_e

hue text for the colours
of this page:
 $H^*_e = G00B_e$

triangle lightness T^*



ORS20a; adapted (a) CIELAB data

Name	$L^*=L^*_a$	a^*_a	b^*_a	$C^*_{ab,a}$	$h^*_{ab,a}$
$R_{e, Ma}$	47.6	64.9	30.9	71.9	25
$Y_{e, Ma}$	82.9	-3.5	87.8	87.9	92
$G_{e, Ma}$	52.4	-67.1	21.5	70.5	162
$C_{e, Ma}$	56.6	-39.7	-29.9	49.8	216
$B_{e, Ma}$	37.9	1.3	-45.4	45.4	271
$M_{e, Ma}$	34.8	49.2	-30.0	57.7	328
$N_{e, Ma}$	17.7	0.0	0.0	0.0	0
$W_{e, Ma}$	95.4	0.0	0.0	0.0	0
$R_{e, CIE}$	39.9	58.7	27.9	65.0	25
$Y_{e, CIE}$	81.2	-2.8	71.5	71.6	92
$G_{e, CIE}$	52.2	-42.4	13.6	44.5	162
$B_{e, CIE}$	30.5	1.4	-46.4	46.4	271

Data for maximum colour (Ma):

$LabCh^*_{e, Ma}$: 52 -67 21 70 162

$HIC^*_{e, Ma}$: G00B_100_100_e

$rgbic^*_{e, Ma}$:

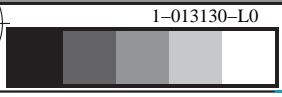
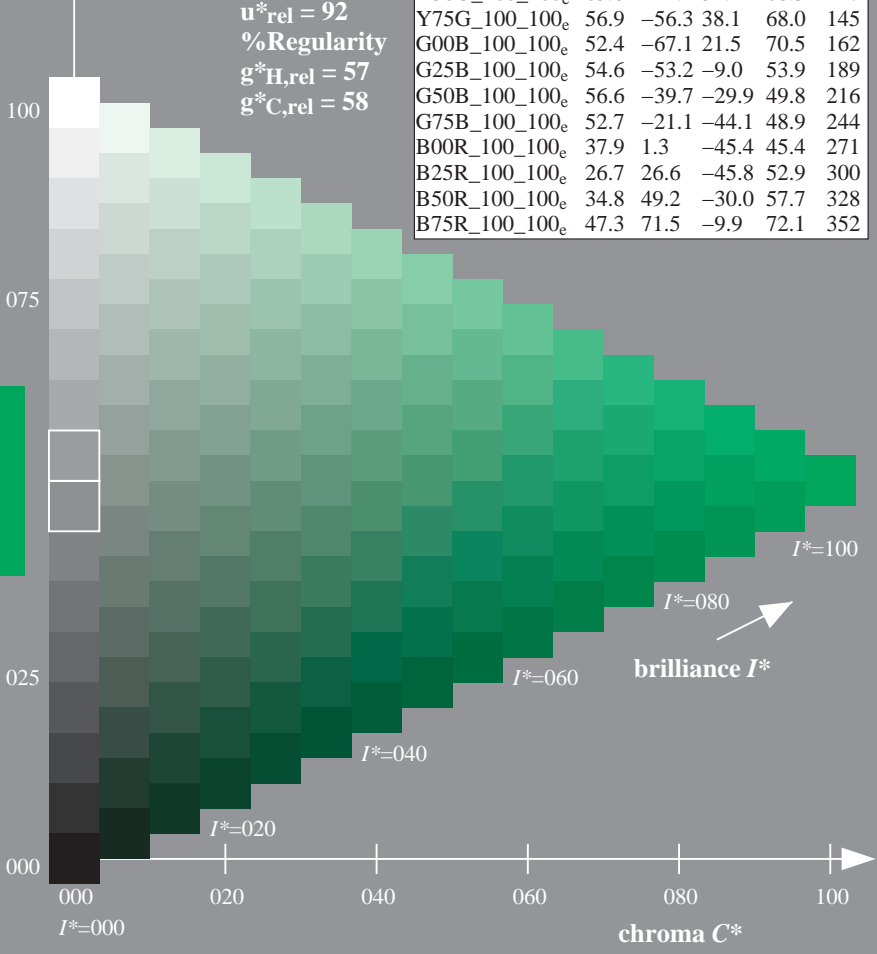
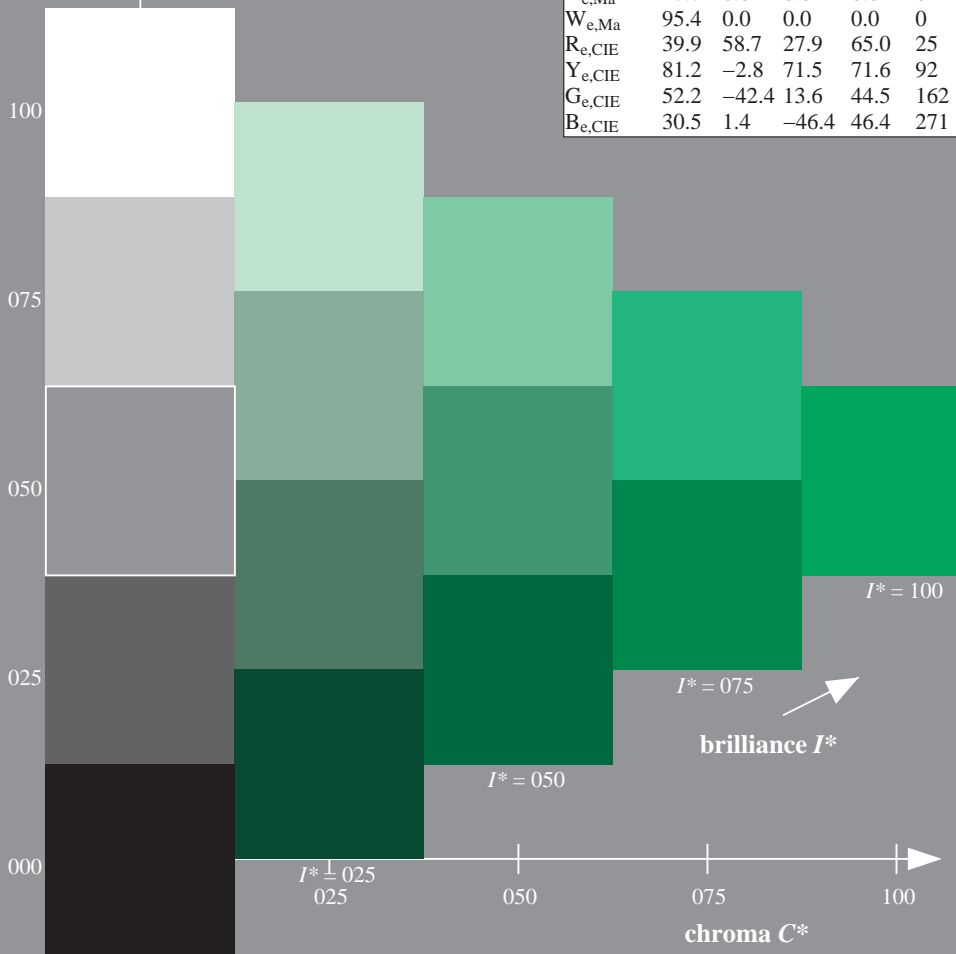
0.0 1.0 0.09 1.0 1.0

triangle lightness T^*

%Gamut
 $u^*_{rel} = 92$
%Regularity
 $g^*_{H, rel} = 57$
 $g^*_{C, rel} = 58$

ORS20a; adapted (a) CIELAB data

H^*_e	$L^*=L^*_a$	a^*_a	b^*_a	$C^*_{ab,a}$	$h^*_{ab,a}$
$R00Y_{100_100_e}$	47.6	64.9	30.9	71.9	25
$R25Y_{100_100_e}$	51.5	54.2	47.2	71.9	41
$R50Y_{100_100_e}$	60.3	35.6	59.0	68.9	58
$R75Y_{100_100_e}$	70.4	17.0	72.2	74.1	76
$Y00G_{100_100_e}$	82.9	-3.5	87.8	87.9	92
$Y25G_{100_100_e}$	76.9	-25.5	75.9	80.1	108
$Y50G_{100_100_e}$	65.8	-41.4	54.4	68.3	127
$Y75G_{100_100_e}$	56.9	-56.3	38.1	68.0	145
$G00B_{100_100_e}$	52.4	-67.1	21.5	70.5	162
$G25B_{100_100_e}$	54.6	-53.2	-9.0	53.9	189
$G50B_{100_100_e}$	56.6	-39.7	-29.9	49.8	216
$G75B_{100_100_e}$	52.7	-21.1	-44.1	48.9	244
$B00R_{100_100_e}$	37.9	1.3	-45.4	45.4	271
$B25R_{100_100_e}$	26.7	26.6	-45.8	52.9	300
$B50R_{100_100_e}$	34.8	49.2	-30.0	57.7	328
$B75R_{100_100_e}$	47.3	71.5	-9.9	72.1	352



1-013130-L0 QE730-71
TUB-test chart QE73; hue code: $H^*_e=G00B_e$
Test chart according to DIN 33872, 3D=0, de=1, cmyk

input: $rgb/cmyk \rightarrow rgb_e$
output: transfer to $cmyk_e$

