

Prüfvorlage 1 für Farbwiedergabe: 54 Norm-Farben für D65; Offsetdruck (CMY0); *rgb*→*rgb*de*



01: R00Y_100_100_e



02: R25Y_100_100_e



03: R50Y_100_100_e



04: R75Y_100_100_e



05: Y00G_100_100_e



06: Y25G_100_100_e



07: Y50G_100_100_e



08: Y75G_100_100_e

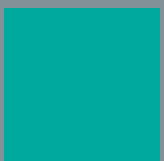


09=10: G00B_100_100_e

Serie:
maximum
m



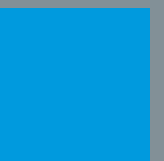
10: G00B_100_100_e



11: G25B_100_100_e



12: G50B_100_100_e



13: G75B_100_100_e



14: B00M_100_100_e



15: B25R_100_100_e



16: B50R_100_100_e



17: B75R_100_100_e

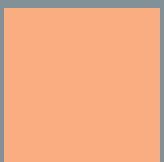


18=01: R00Y_100_100_e

maximum
m



19: R00Y_100_050_e



20: R50Y_100_050_e



21: Y00G_100_050_e



22: Y50G_100_050_e



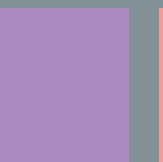
23: G00B_100_050_e



24: G50B_100_050_e



25: B00R_100_050_e



26: B50R_100_050_e

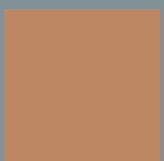


27=19: R00Y_100_050_e

weiß-
lich
w



28: R00Y_075_050_e



29: R50Y_075_050_e



30: Y00G_075_050_e



31: Y50G_075_050_e



32: G00B_075_050_e



33: G50B_075_050_e



34: B00R_075_050_e



35: B50R_075_050_e

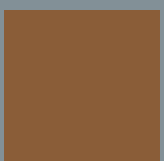


36=28: R00Y_075_050_e

zentral
z



37: R00Y_050_050_e



38: R50Y_050_050_e



39: Y00G_050_050_e



40: Y50G_050_050_e



41: G00B_050_050_e



42: G50B_050_050_e



43: B00R_050_050_e



44: B50R_050_050_e

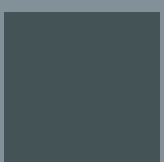


45=37: R00Y_050_050_e

schwärz-
lich
n



46: NW_000_e



47: NW_013_e



48: NW_025_e



49: NW_038_e



50: NW_050_e



51: NW_063_e



52: NW_075_e



53: NW_088_e



54: NW_100_e

grau
g