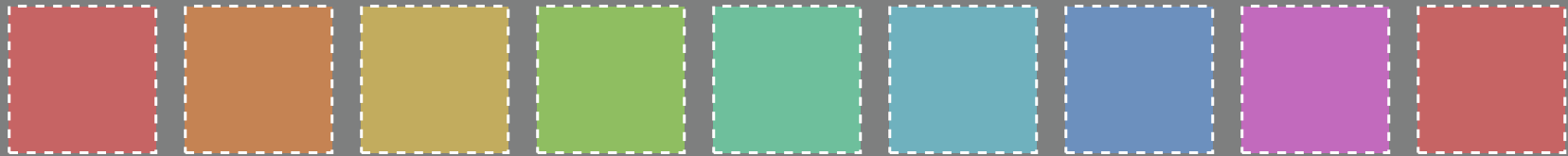


see similar files: <http://130.149.60.45/~farbmetrik/PE30/PE30L0FP.PDF> / .PS
technical information: <http://www.ps.bam.de> or <http://130.149.60.45/~farbmetrik>

TUB registration: 20130201-PE30/PE30L0FP.PDF /.PS
application for measurement of display output, no separation

TUB material: code=thata

Test chart 3 for color rendering: metameric colours A and P4000; standard display (sRGB); *rgb*→*rgb*de*



Series:
metameric
m
A

01: R00Y_075_050*_e 02: R50Y_075_050*_e 03: Y00G_075_050*_e 04: Y50G_075_050*_e 05: G00B_075_050*_e 06: G50B_075_050*_e 07: B00R_075_050*_e 08: B50R_075_050*_e 09=10: R00Y_075_050*_e



central
z
A/P4000

10: R00Y_075_050*_e 11: R50Y_075_050*_e 12: Y00G_075_050*_e 13: Y50G_075_050*_e 14: G00B_075_050*_e 15: G50B_075_050*_e 16: B00R_075_050*_e 17: B50R_075_050*_e 18=01: R00Y_075_050*_e

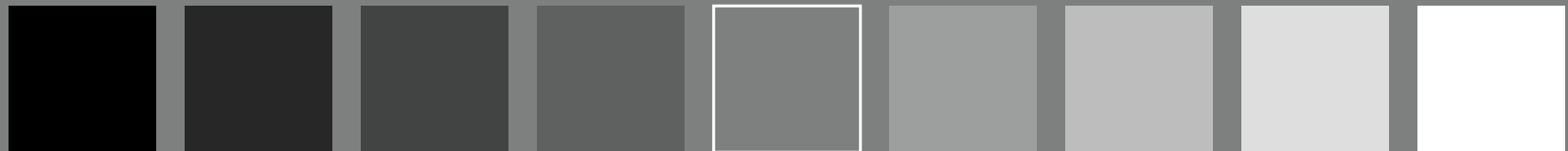
metameric colours only possible for offset print and colour printers
with at least four basic colours, either *CMYK* or *CMY0*

metameric
m
P4000



metameric
m
A^b*N=0.0, 0.0, 0.0
Lab*W=95.4, 0.0, 0.0

28: NW_000*_e 29: NW_013*_e 30: NW_025*_e 31: NW_038*_e 32: NW_050*_e 33: NW_063*_e 34: NW_075*_e 35: NW_088*_e 36=28: NW_100*_e



grey
g
A/P4000

37: NW_000*_e 38: NW_013*_e 39: NW_025*_e 40: NW_038*_e 41: NW_050*_e 42: NW_063*_e 43: NW_075*_e 44: NW_088*_e 45=37: NW_100*_e

metameric colours only possible for offset print and colour printers
with at least four basic colours, either *CMYK* or *CMY0*

metameric
m
P4000

