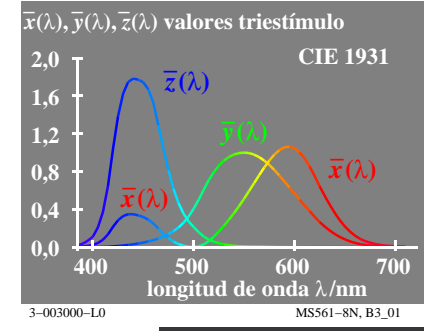
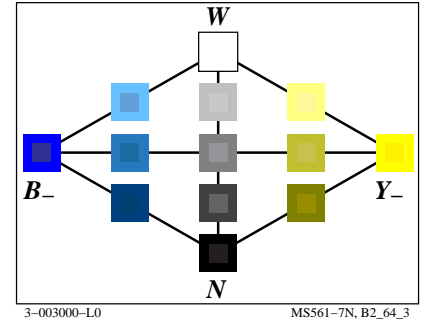
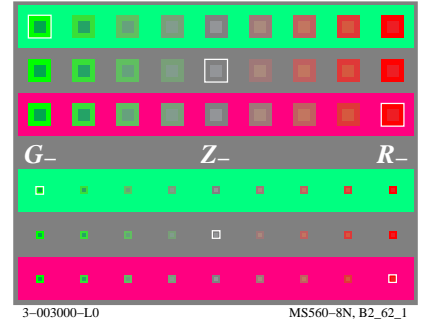
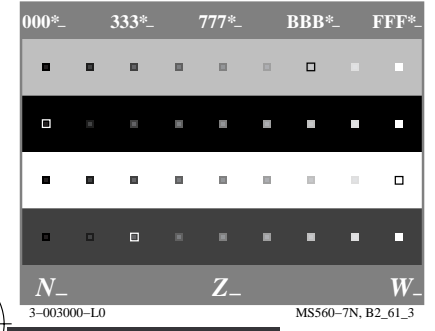
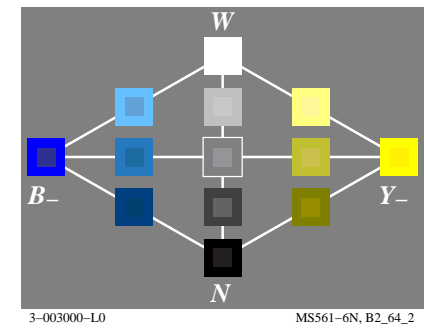
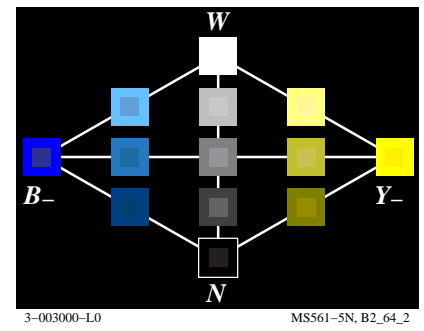
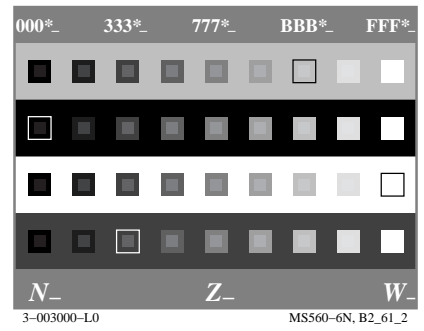
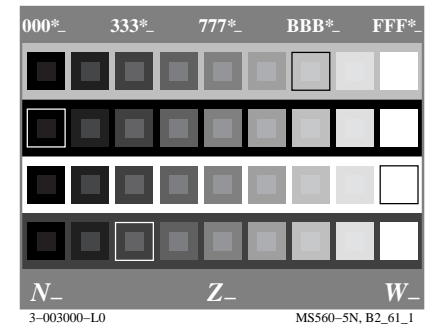
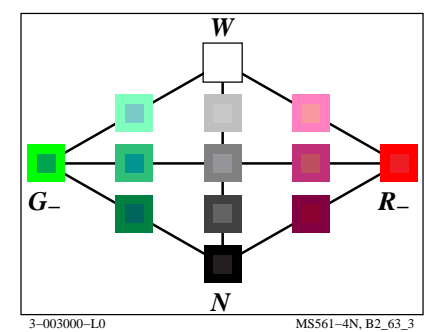
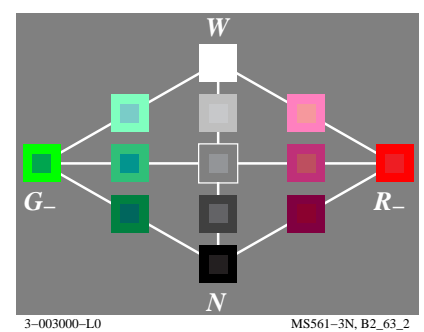
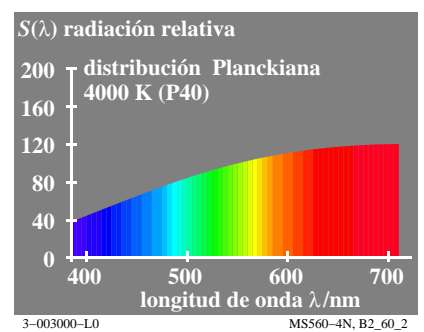
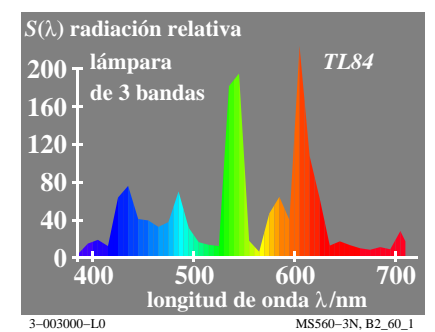
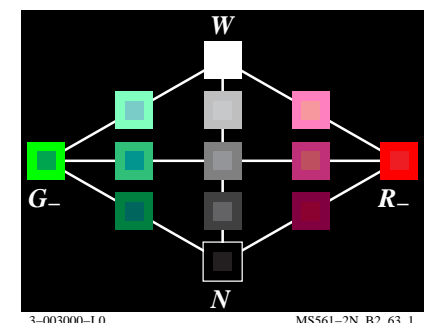
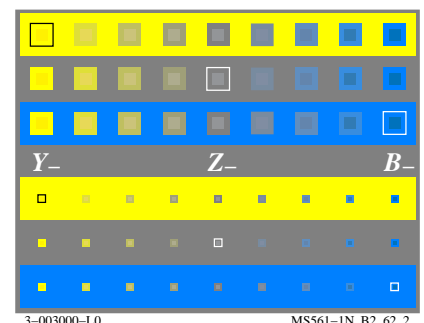
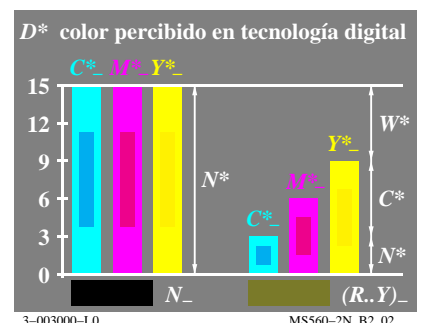
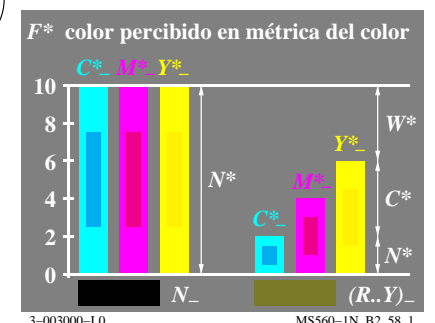
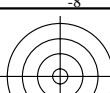


vea archivos semejantes: <http://farbe.li.tu-berlin.de/MS56/MS56.HTM>
<http://130.149.60.45/~farbmertik> o <http://farbe.li.tu-berlin.de>

TUB matrícula: 20190801-MS56/MS56LONA.TXT /.PS
aplicación para la medida de display output

TUB material: code=rh4ta



vea archivos semejantes: <http://farbe.li.tu-berlin.de/MS56/MS56.HTM>
<http://130.149.60.45/~farbmertik> o <http://farbe.li.tu-berlin.de>

TUB matrícula: 20190801-MS56/MS56L0NA.TXT /.PS
aplicación para la medida de display output, ninguna separación

TUB material: code=rh4ta

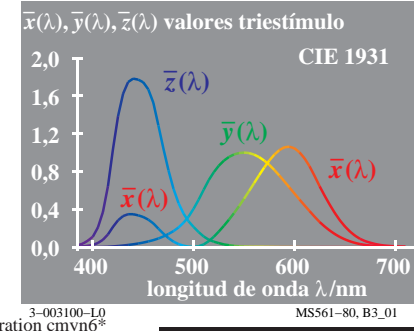
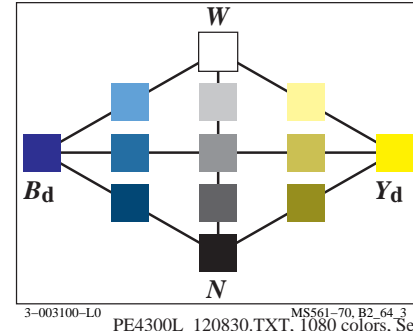
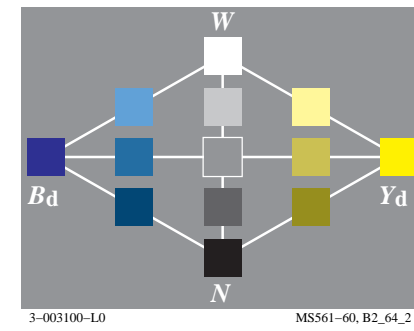
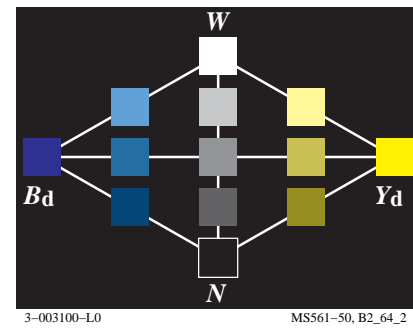
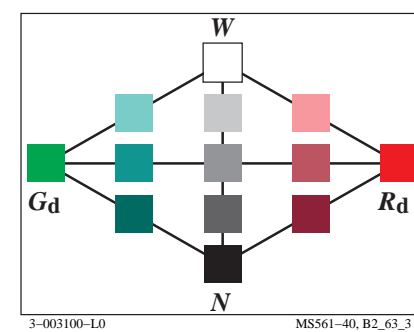
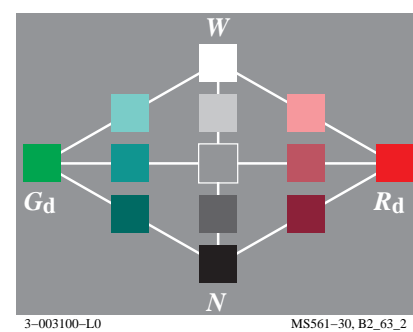
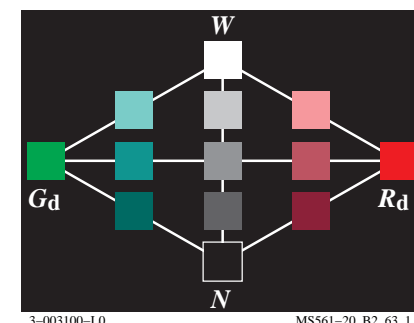
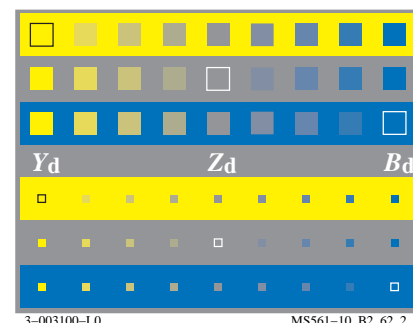
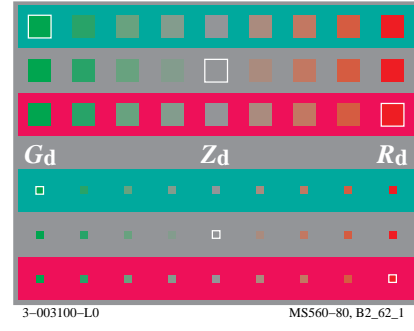
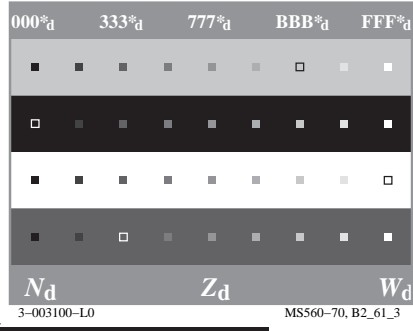
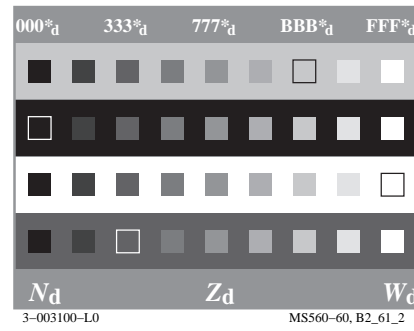
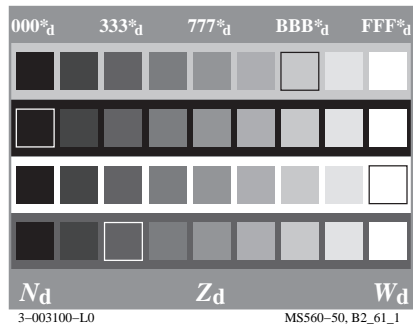
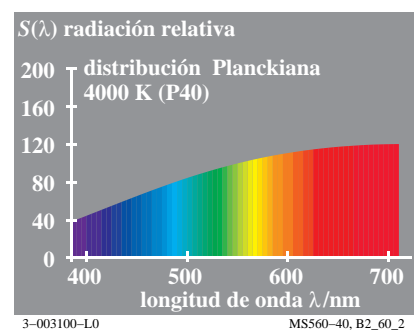
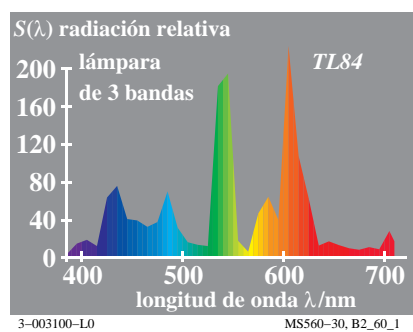
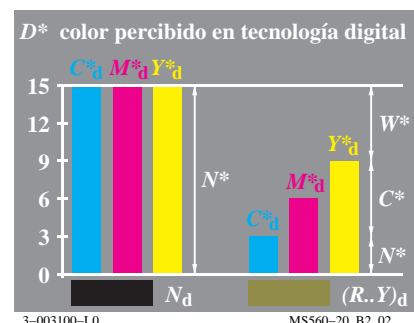
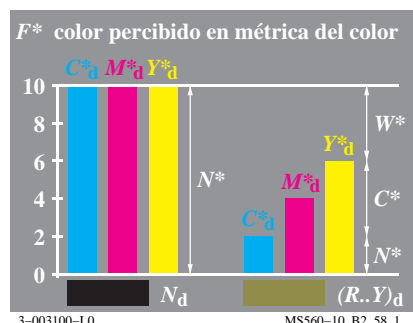


Gráfico TUB-MS56; la gráfica de Ordenador y colorimetry
Imagine la serie MS56, 3D=0, de=0, L-cmyn6

PE4300L_120830.TXT, 1080 colors, Separation cmyn6*
entrada: rgb/cmyk -> rgb_d
salida: transferencia a rgb_d



vea archivos semejantes: <http://farbe.li.tu-berlin.de/MS56/MS56.HTM>
<http://130.149.60.45/~farbmertik> o <http://farbe.li.tu-berlin.de>

TUB matrícula: 20190801-MS56/MS56L0NA.TXT /.PS
aplicación para la medida de display output

TUB material: code=rh4ta

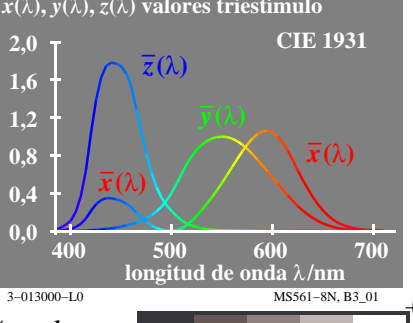
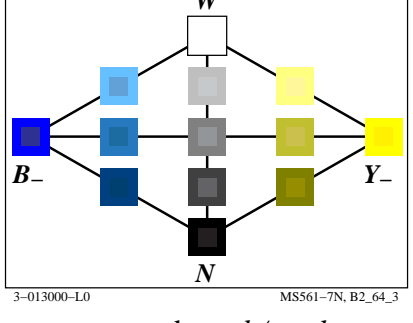
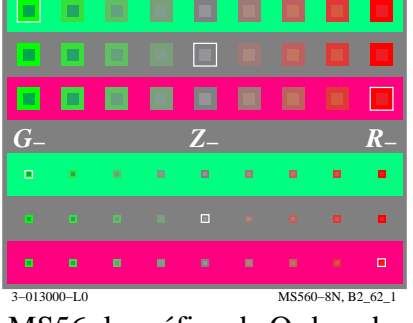
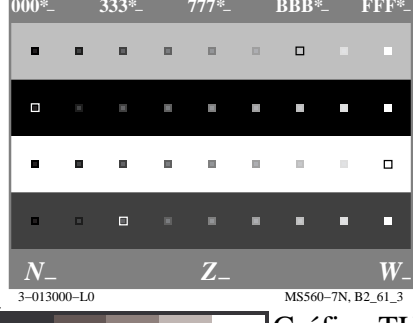
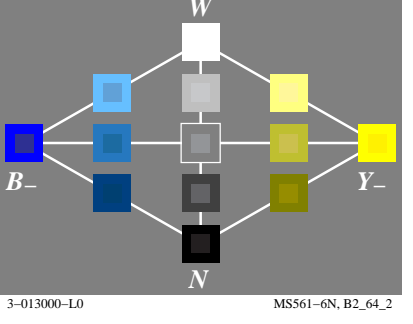
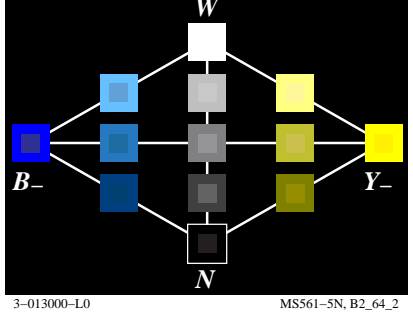
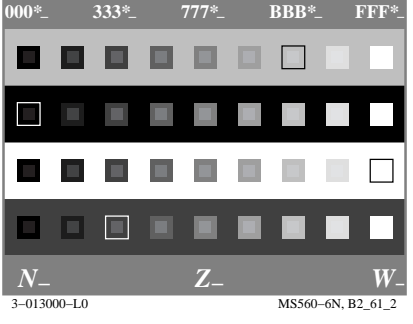
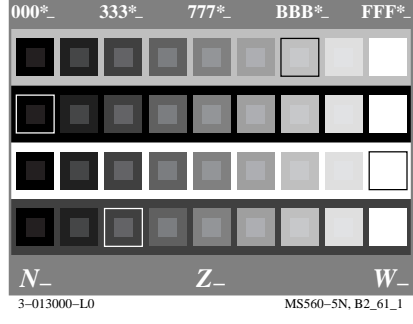
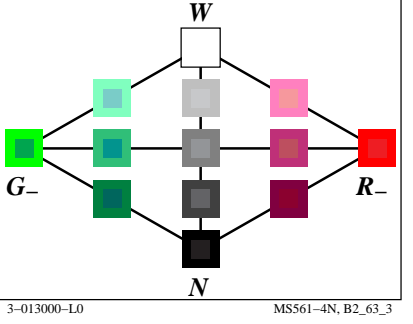
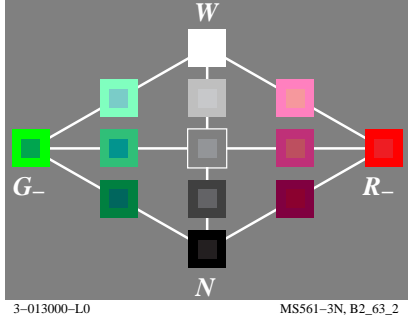
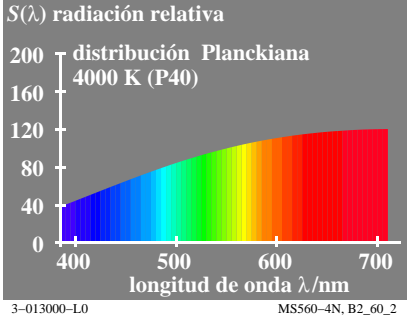
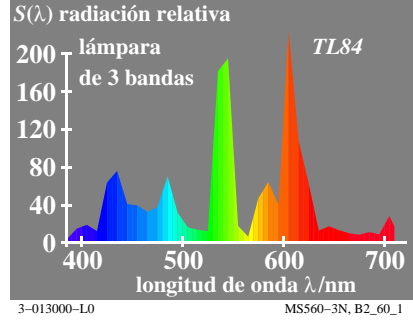
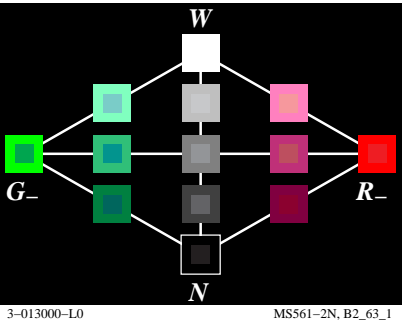
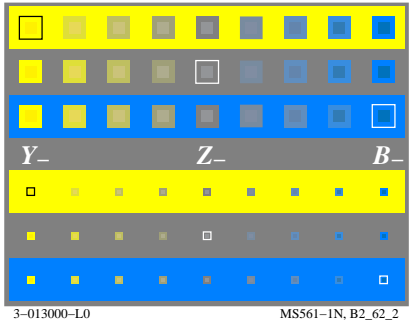
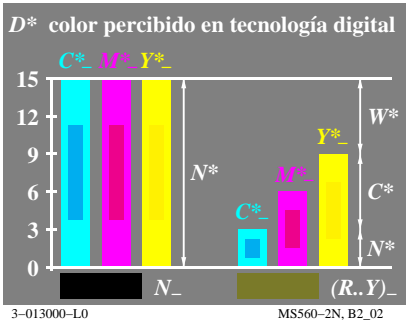
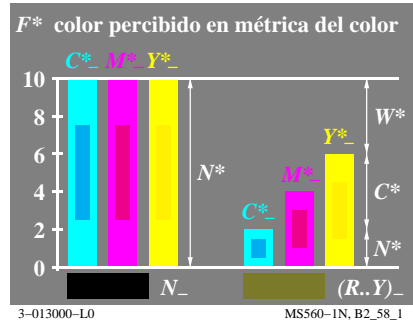
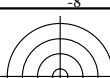


Gráfico TUB-MS56; la gráfica de Ordenador y colorimetry
Imagine la serie MS56, 3D=0, de=1

entrada: rgb/cmyk → rgb/cmyk
salida: ningún cambio



vea archivos semejantes: <http://farbe.li.tu-berlin.de/MS56/MS56.HTM>
<http://130.149.60.45/~farbmertik> o <http://farbe.li.tu-berlin.de>

TUB matrícula: 20190801-MS56/MS56L0NA.TXT /.PS
aplicación para la medida de display output, ninguna separación

TUB material: code=rh4ta

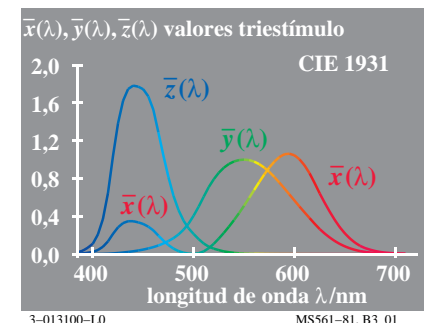
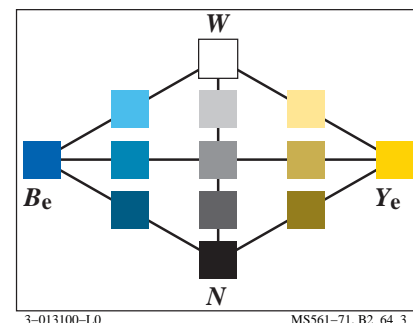
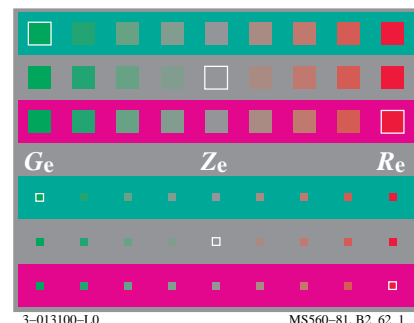
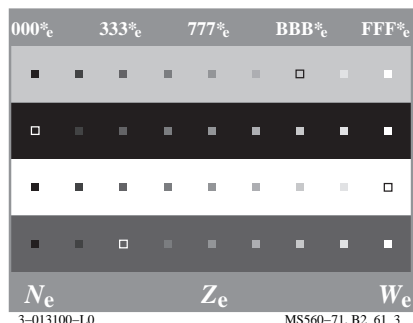
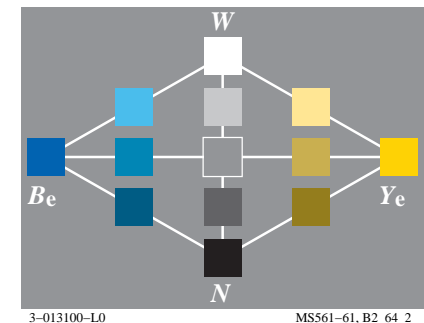
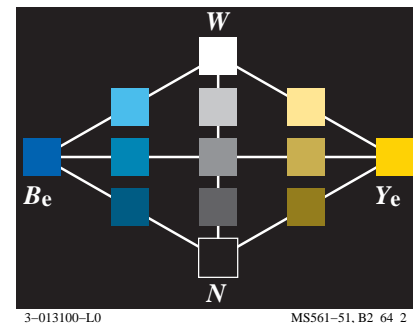
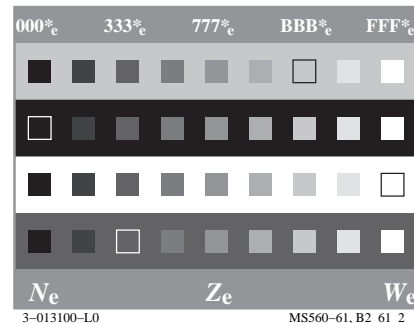
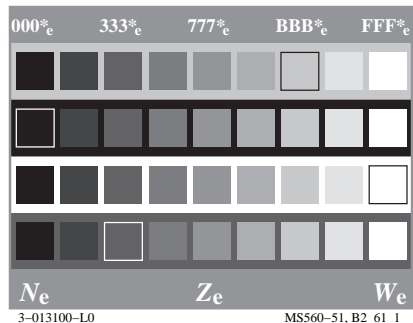
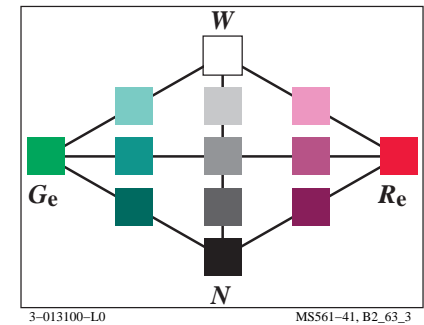
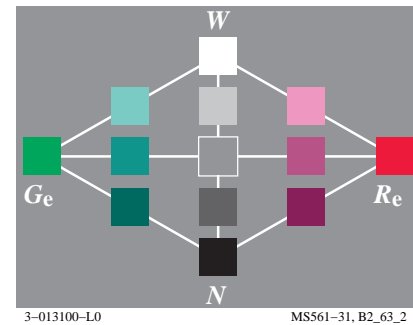
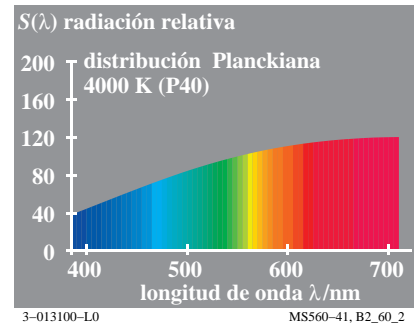
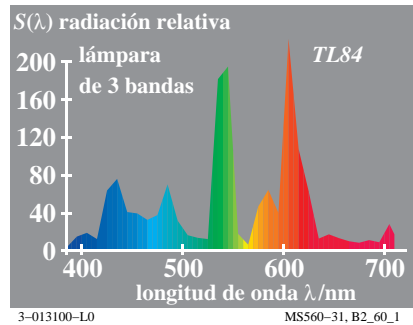
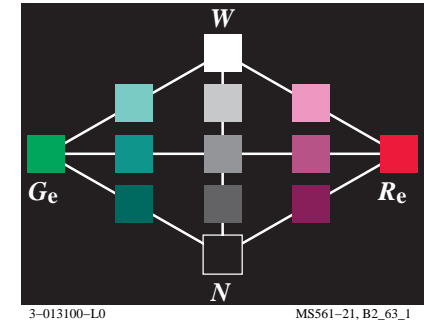
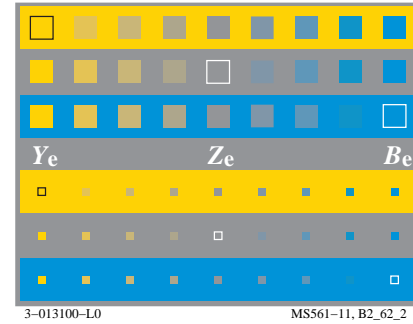
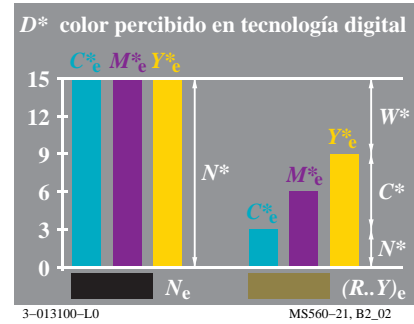
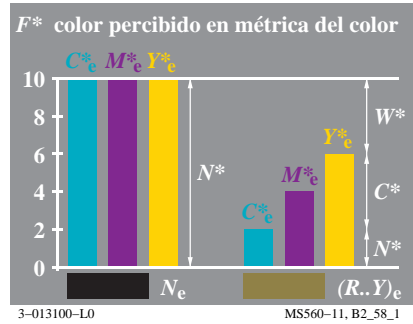
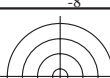


Gráfico TUB-MS56; la gráfica de Ordenador y colorimetry
Imagine la serie MS56, 3D=0, de=1, L-cmy_n6

PE4300L_120830.TXT, 1080 colors, Separation cmy_n6*
entrada: rgb/cmyk → rgb_e
salida: transfiera a rgb_e

