

http://farbe.li.tu-berlin.de/MS56/MS56L0N0.TXT / PS; comience salida
N: ninguna 3D-linealización (OL) en archivo (F) o PS-startup (S), página 1/1

vea archivos semejantes: <http://farbe.li.tu-berlin.de/MS56/MS56.HTM>
<http://130.149.60.45/~farbenrirk> o <http://farbe.li.tu-berlin.de>

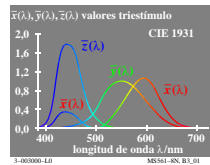
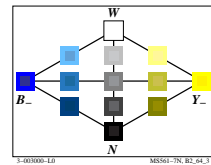
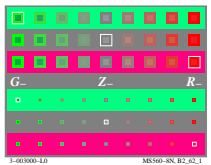
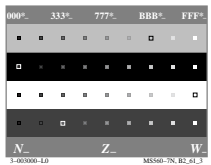
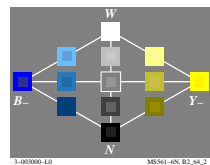
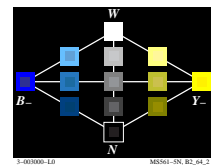
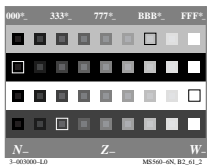
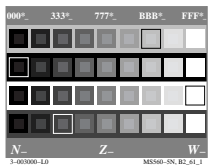
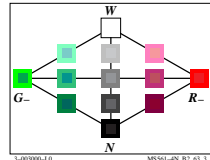
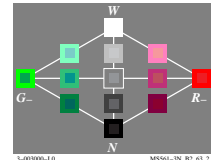
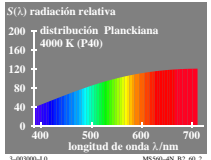
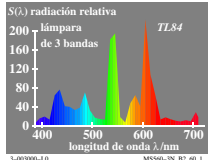
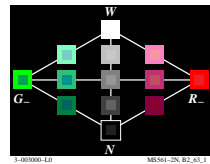
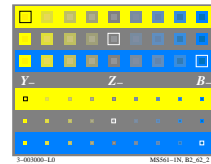
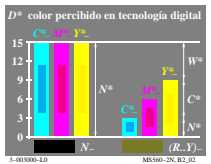
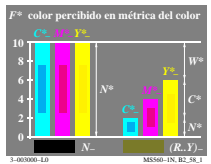


Gráfico TUB-MS56; la gráfica de Ordenador y colorimetry
Imagine la serie MS56, 3D=0, de=0

entrada: *rgb/cmyk* -> *rgb/cmyk*
salida: ningún cambio

TUB matricula: 20190801-MS56/MS56L0N0.TXT .PS
aplicación para la medida de display output

TUB material: code=thata