

vea archivos semejantes: <http://farbe.li.tu-berlin.de/MS56/MS56.HTM>
<http://130.149.60.45/~farbmertik> o <http://farbe.li.tu-berlin.de>

TUB matrícula: 20190801-MS56/MS56L0FA.TXT /.PS
aplicación para la medida de display output

TUB material: code=rh4ta

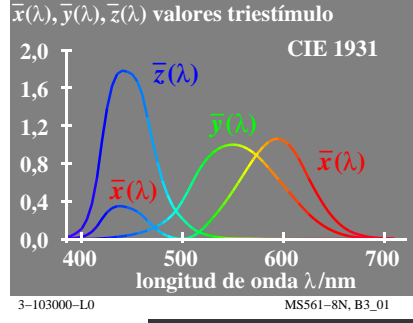
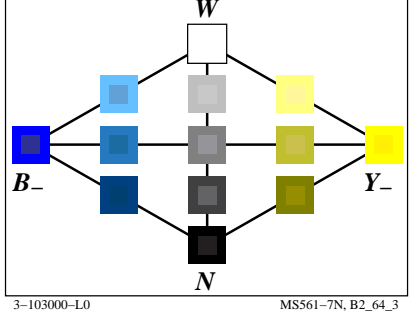
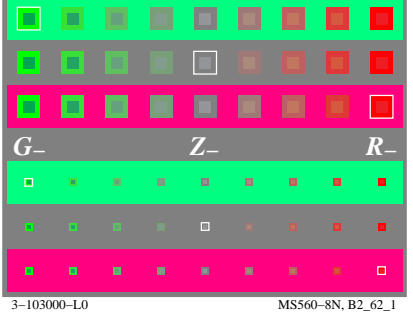
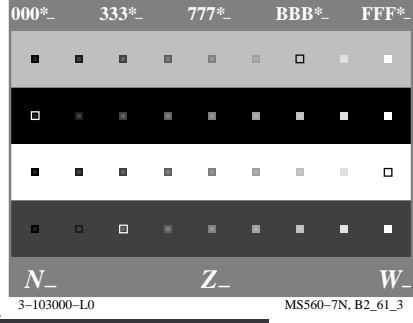
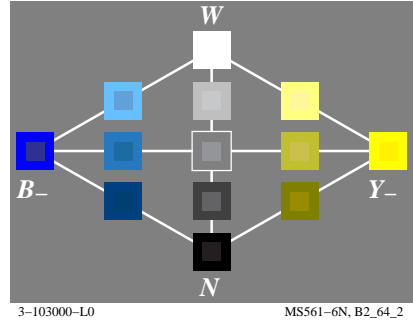
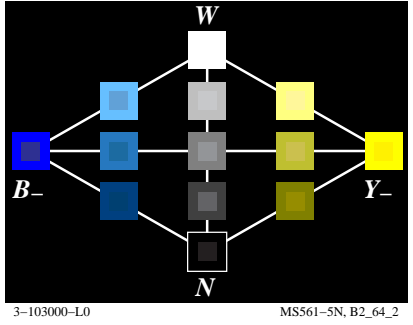
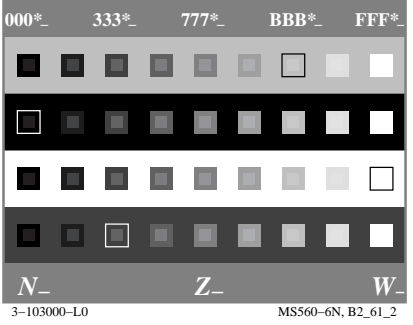
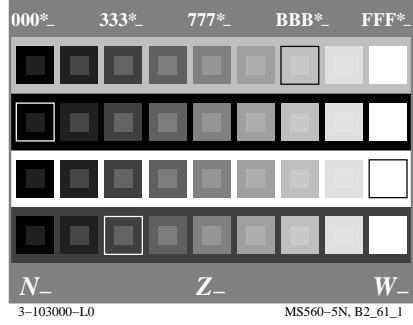
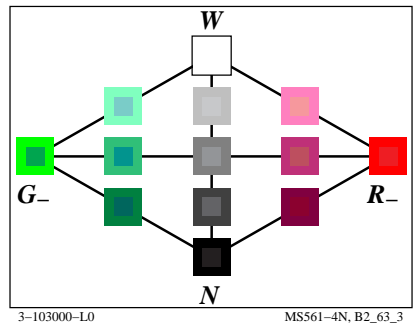
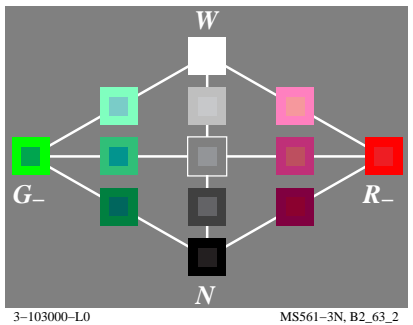
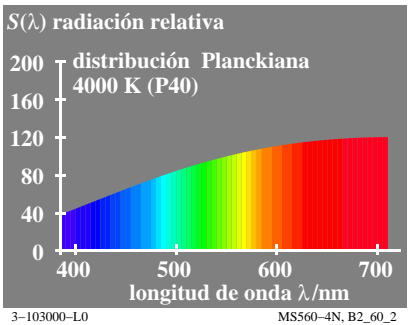
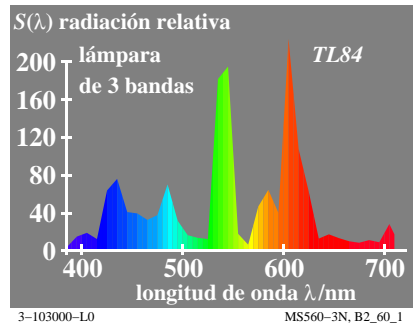
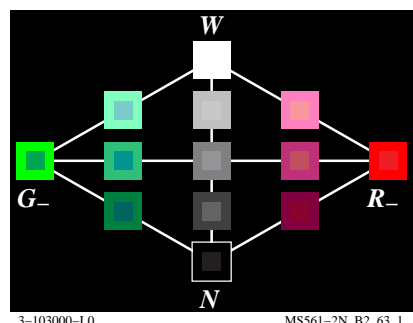
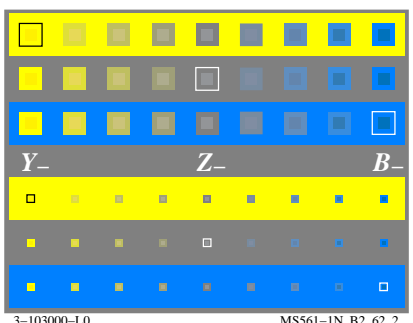
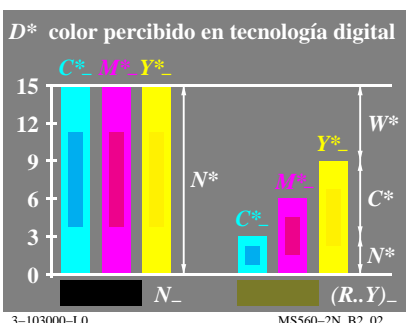
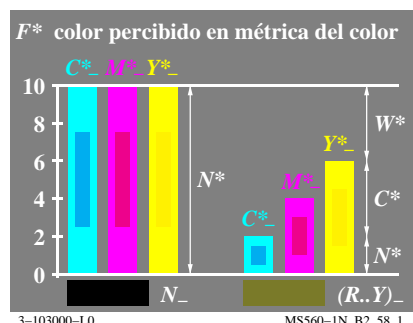
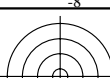


Gráfico TUB-MS56; la gráfica de Ordenador y colorimetry
Imagine la serie MS56, 3D=1, de=0

entrada: rgb/cmyk → rgb/cmyk
salida: ningún cambio



vea archivos semejantes: <http://farbe.li.tu-berlin.de/MS56/MS56.HTM>
<http://130.149.60.45/~farbmertik> o <http://farbe.li.tu-berlin.de>

TUB matrícula: 20190801-MS56/MS56L0FA.TXT /.PS
aplicación para la medida de display output, ninguna separación

TUB material: code=rh4ta

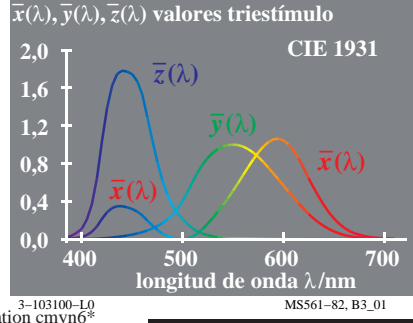
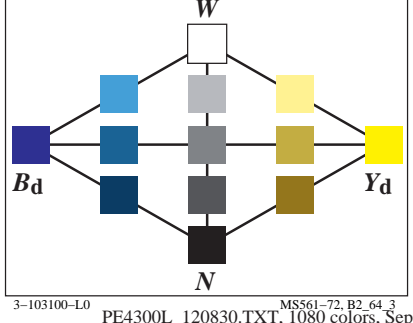
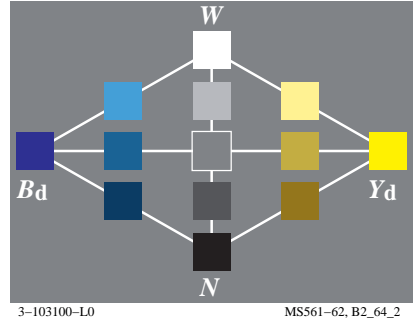
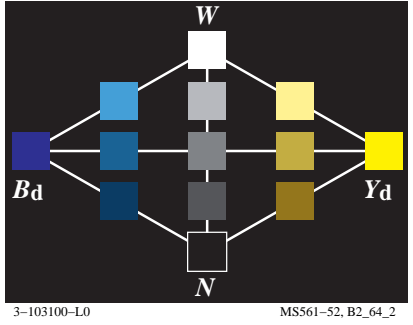
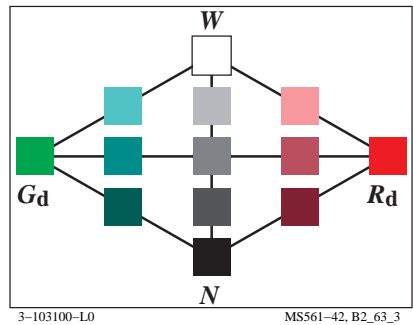
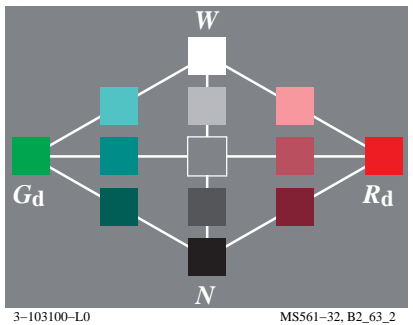
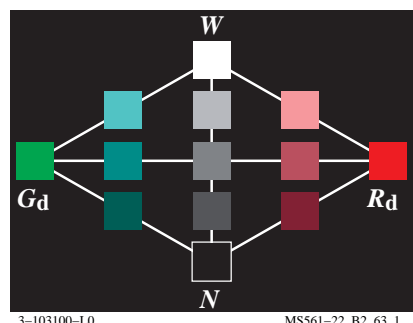
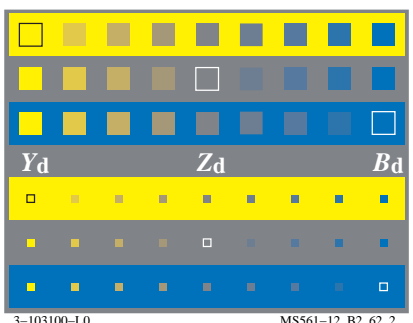
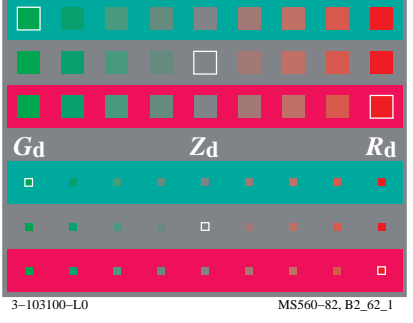
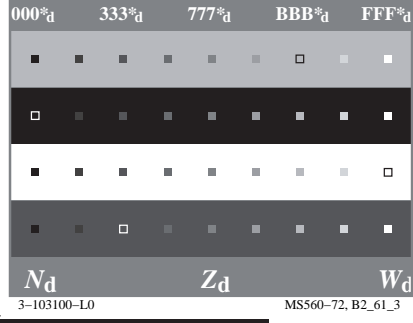
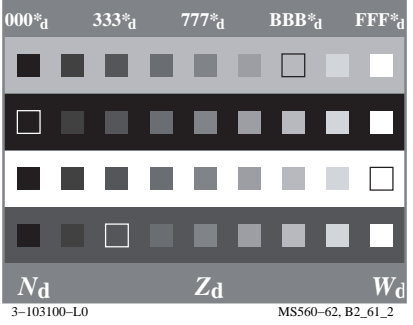
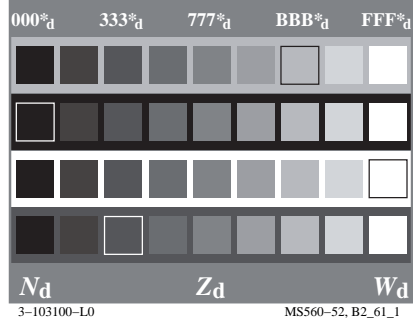
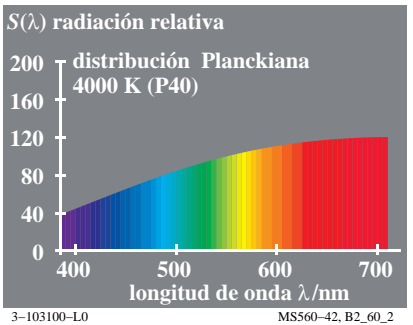
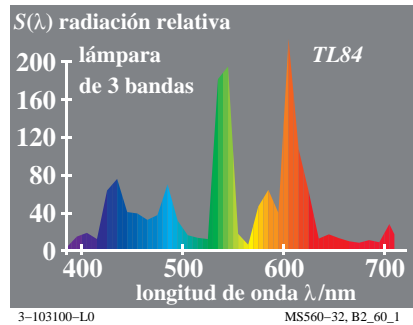
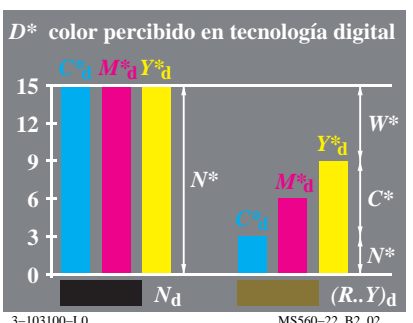
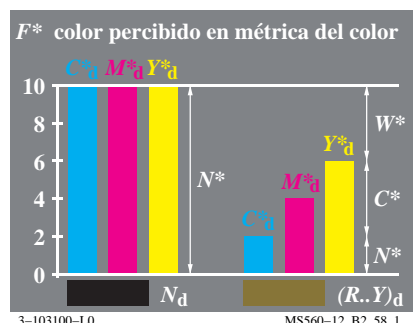


Gráfico TUB-MS56; la gráfica de Ordenador y colorimetry
Imagine la serie MS56, 3D=1, de=0, L-cmy₆*

PE4300L_120830.TXT, 1080 colors, Separation cmy₆*
entrada: rgb/cmyk -> rgb_{dd}
salida: 3D-linealización a rgb*_{dd}



vea archivos semejantes: <http://farbe.li.tu-berlin.de/MS56/MS56.HTM>
<http://130.149.60.45/~farbmertik> o <http://farbe.li.tu-berlin.de>

TUB matrícula: 20190801-MS56/MS56L0FA.TXT /.PS
aplicación para la medida de display output

TUB material: code=rh4ta

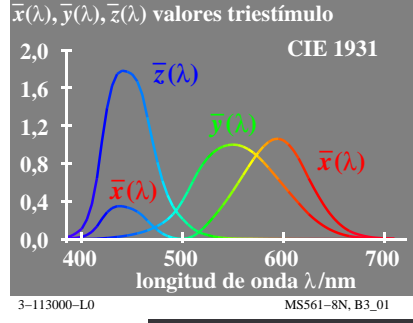
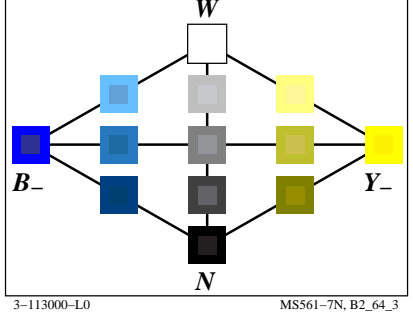
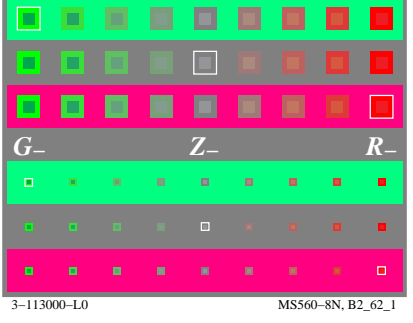
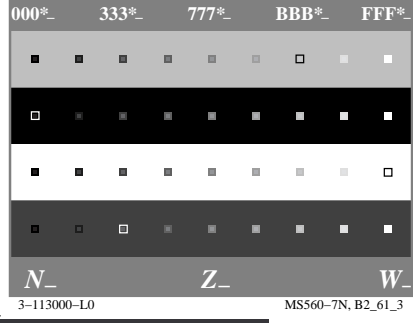
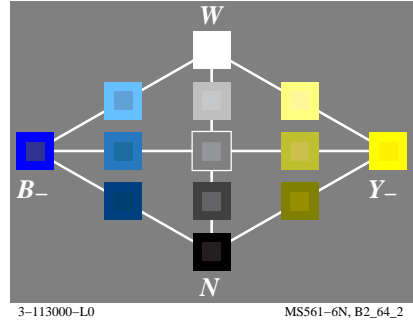
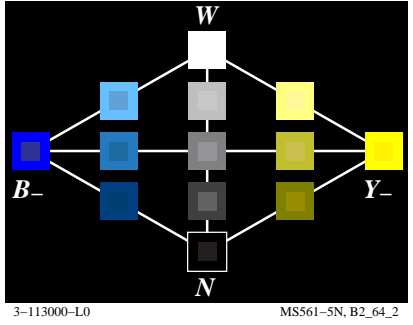
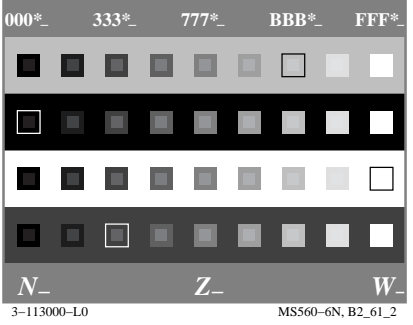
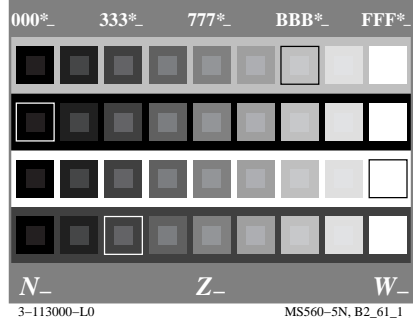
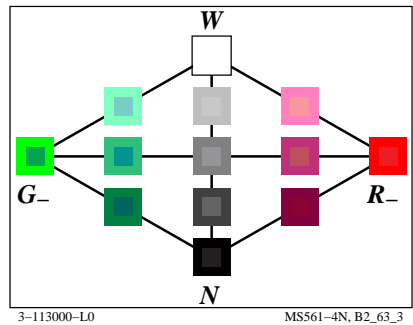
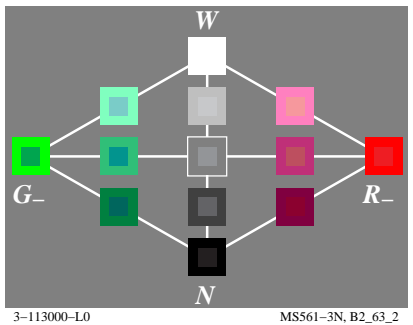
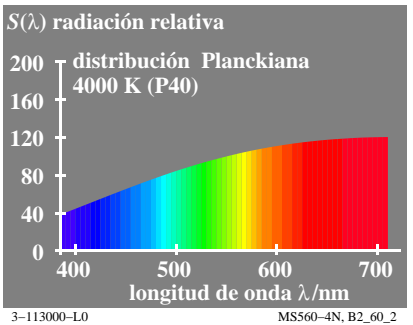
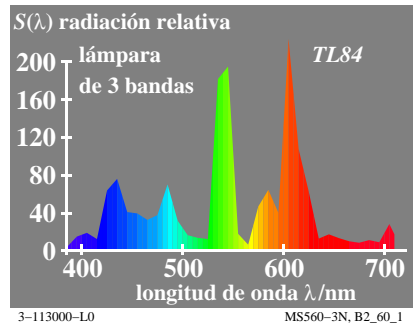
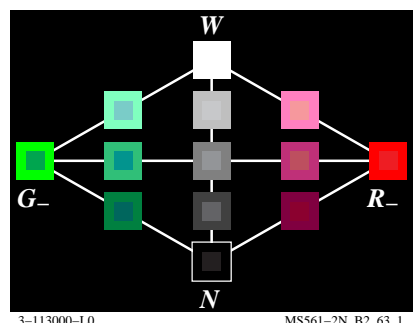
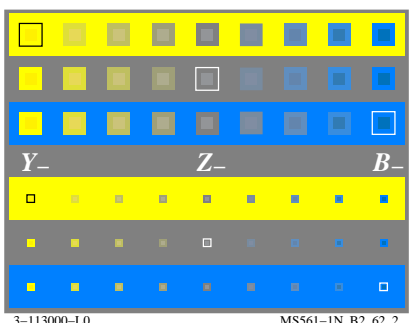
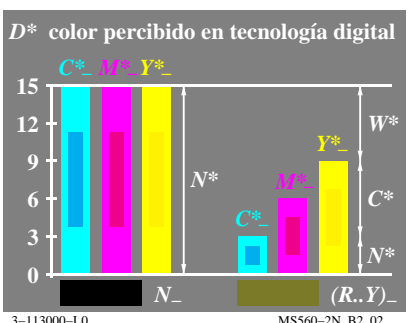
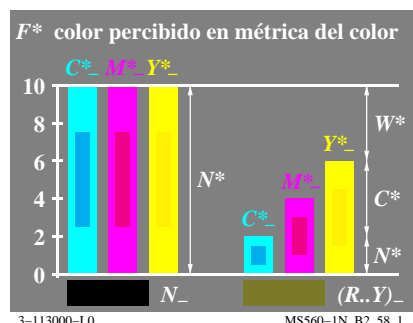
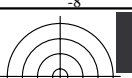


Gráfico TUB-MS56; la gráfica de Ordenador y colorimetry
Imagine la serie MS56, 3D=1, de=1

entrada: rgb/cmyk \rightarrow rgb/cmyk
salida: ningún cambio



vea archivos semejantes: <http://farbe.li.tu-berlin.de/MS56/MS56.HTM>
<http://130.149.60.45/~farbmertik> o <http://farbe.li.tu-berlin.de>

TUB matrícula: 20190801-MS56/MS56L0FA.TXT /.PS
aplicación para la medida de display output, ninguna separación

TUB material: code=rh4ta

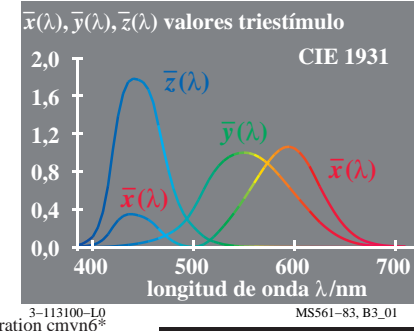
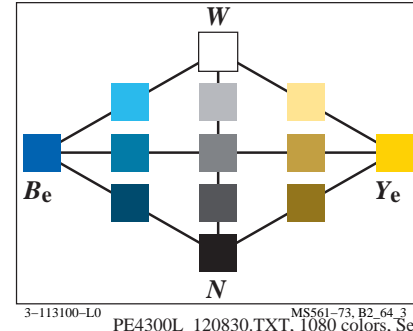
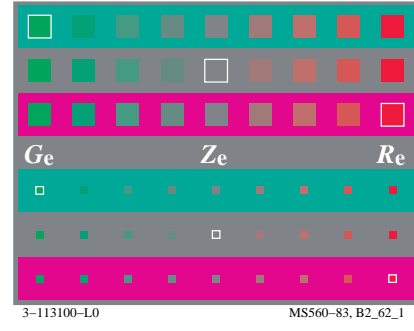
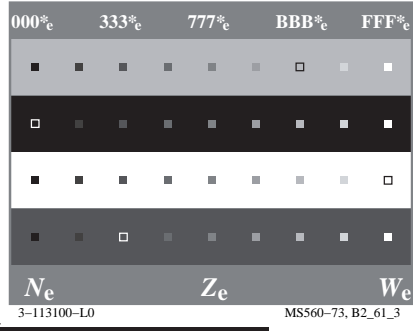
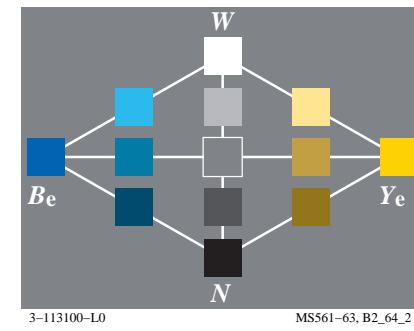
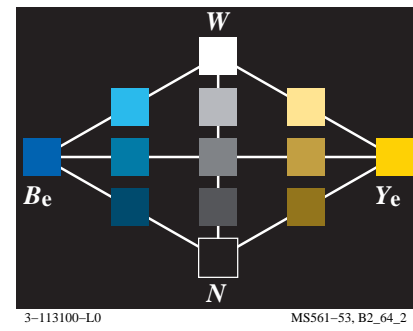
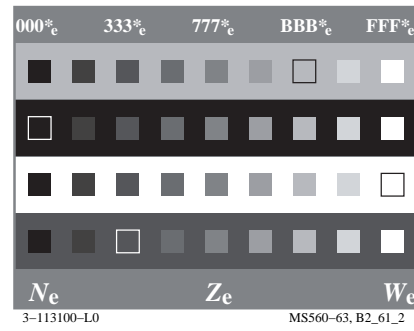
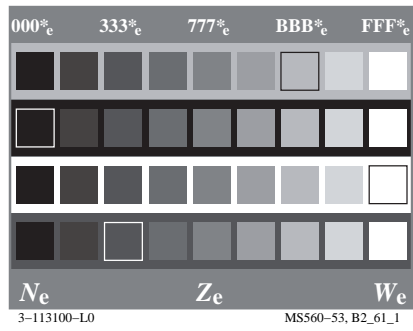
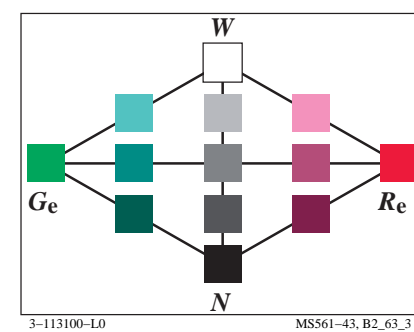
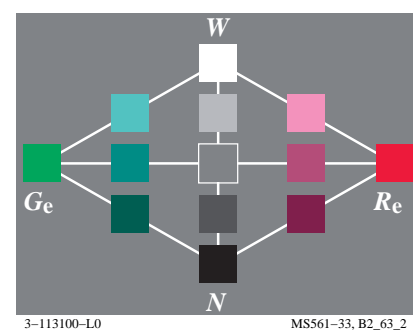
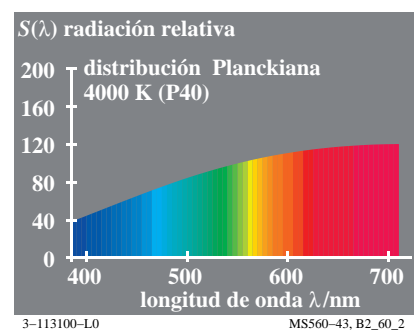
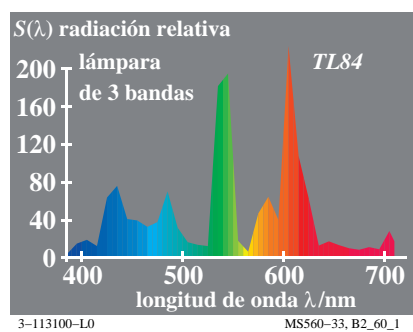
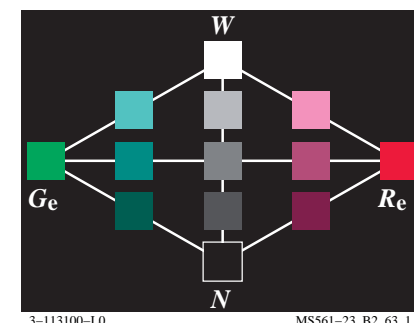
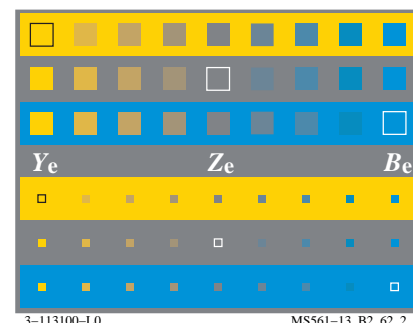
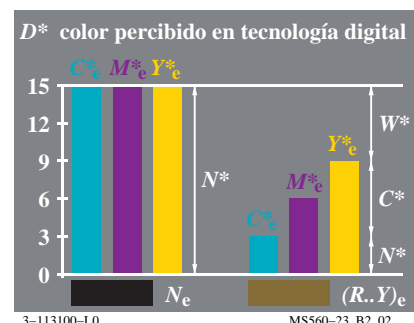
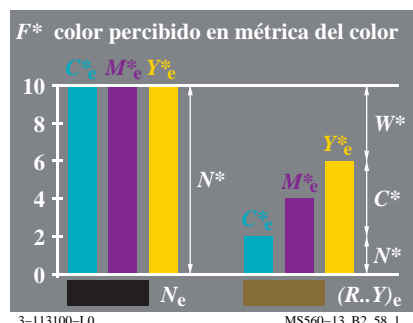


Gráfico TUB-MS56; la gráfica de Ordenador y colorimetry
Imagine la serie MS56, 3D=1, de=1, L-cmy₆*

PE4300L_120830.TXT, 1080 colors, Separation cmy₆*
entrada: rgb/cmyk -> rgb_{de}
salida: 3D-linealización a rgb*_{de}

