

http://130.149.60.45/~farbmetrik/MS47/MS47L0N1.TXT /PS; comiencie salida  
N: ninguna 3D-linealización (OL) en archivo (F) o PS-startup (S), página 1/1

vea archivos semejantes: <http://130.149.60.45/~farbmetrik/MS47/MS47L0N1.TXT> /PS  
información técnica: <http://www.ps.bande.o> <http://130.149.60.45/~farbmetrik>

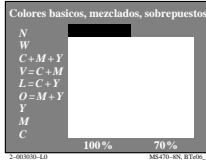
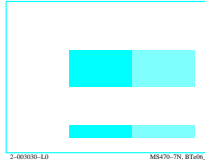
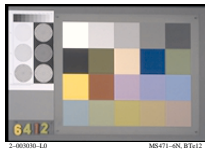
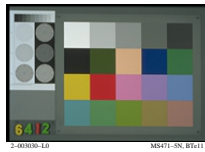
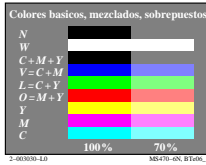
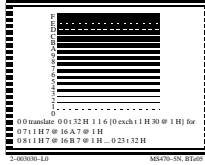
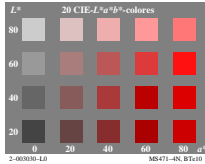
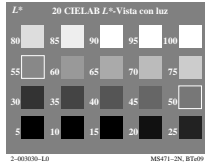
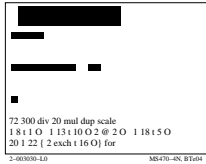
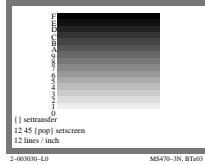
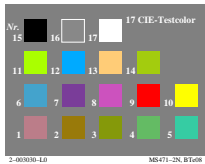
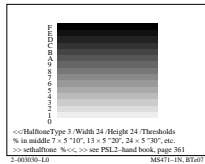
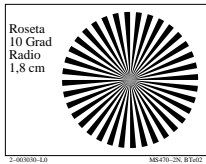
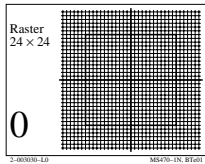


Gráfico MS47; la gráfica de Ordenador y colorimetry  
Imagine la serie MS47, 3D=0, de=0

entrada: *rgb/cmyk* -> *rgb/cmyk*  
salida: ningún cambio

TUB matricula: 20130201-MS47/MS47L0N1.TXT /PS  
aplicación para la medida de display output

TUB material: code=rhata