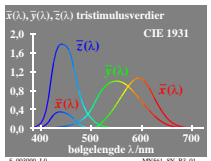
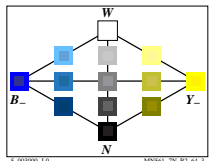
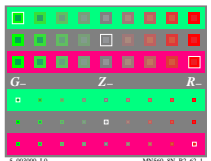
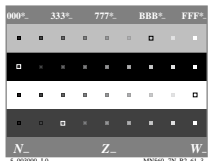
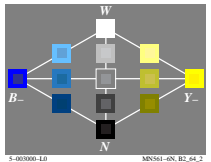
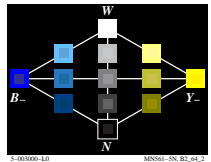
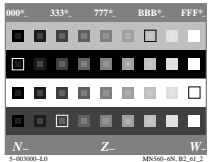
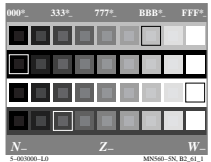
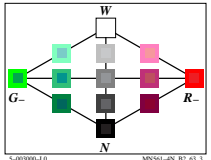
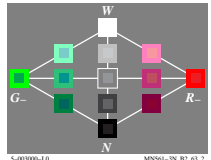
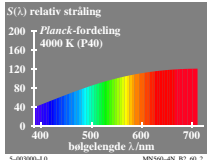
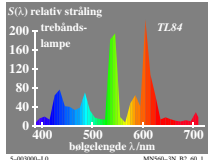
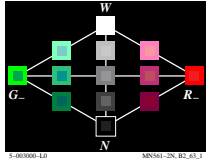
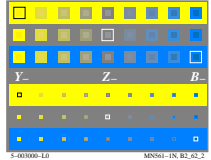
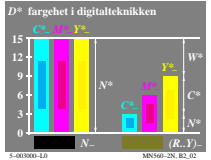
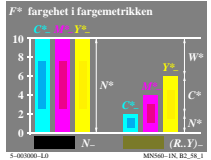


http://farbe.li.tu-berlin.de/MN56/MN56LON0.TXT /PS; start output
N: ingen 3D-linearisering (OL) i fil (F) eller PS-startup (S), side 1/1

se liggende filer: http://farbe.li.tu-berlin.de/MN56/MN56.HTM
http://130.149.60.45/~farbmetrik eller http://farbe.li.tu-berlin.de



TUB-testplasje MN56; Computergrafikk og fargemetrikk
Bildeserie MN56, 3D=0, de=0

input: rgb/cmyk -> rgb/cmyk
output: ingen endring

TUB registrering: 20190801-MN56/MN56LON0.TXT /PS
anvendelse for måling av display output

TUB materiell: code=ha4ta