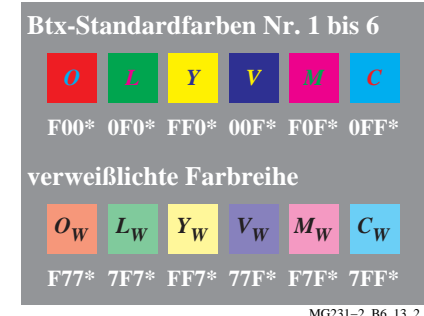
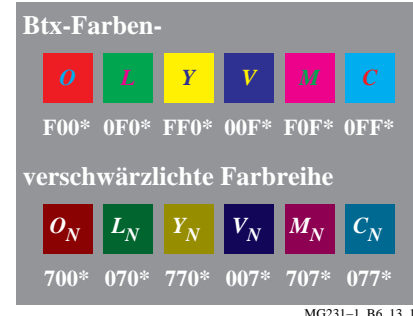
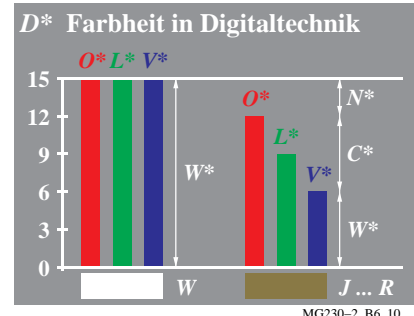
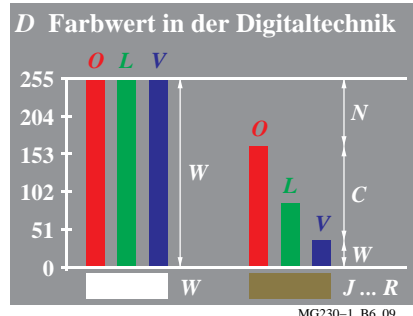


Siehe Original/Kopie: <http://web.me.com/klaus-richter/MG23/MG23L0NA.TXT> /PS
 Technische Information: <http://www.ps.bam.de> oder <http://130.149.60.45/~farbmetrik>

TUB-Registrierung: 20101101-MG23/MG23L0NA.TXT /PS
 Anwendung für Messung von Drucker- oder Monitorsystemen
 TUB-Material: Code=rh4ta



Farbheit	Farbnummer	Digitalbezugswert
$O^* L^* V^* n$	$h^* d$	$D (Y_Y = 93 \text{ Video})$
15,15,15	7 FFF*	4095 [93+7·(81/81)]·2,55
15,15,13	- FFD*	4093 [93+7·(64/81)]·2,55
15,15,11	- FFB*	4091 [93+7·(49/81)]·2,55
15,15,9	- FF9*	4089 [93+7·(36/81)]·2,55
15,15,7	- FF7*	4087 [93+7·(25/81)]·2,55
15,15,5	- FF5*	4085 [93+7·(16/81)]·2,55
15,15,3	- FF3*	4083 [93+7·(9/81)]·2,55
15,15,1	- FF1*	4081 [93+7·(4/81)]·2,55
15,15,0	3 FF0*	4080 [93+7·(0/81)]·2,55

MG230-3, B6_11_1

Farbheit	Farbnummer	Digitalbezugswert
$O^* L^* V^* n$	$h^* d$	$D (Y_M = 29 \text{ Video})$
15,15,15	7 FFF*	4095 [29+71·(81/81)]·2,55
15,13,15	- FDF*	4063 [29+71·(64/81)]·2,55
15,11,15	- FBF*	4031 [29+71·(49/81)]·2,55
15,9,15	- F9F*	3999 [29+71·(36/81)]·2,55
15,7,15	- F7F*	3967 [29+71·(25/81)]·2,55
15,5,15	- F5F*	3935 [29+71·(16/81)]·2,55
15,3,15	- F3F*	3903 [29+71·(9/81)]·2,55
15,1,15	- F1F*	3871 [29+71·(4/81)]·2,55
15,0,15	5 F0F*	3855 [29+71·(0/81)]·2,55

MG230-4, B6_11_2

