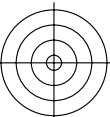
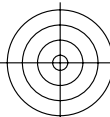
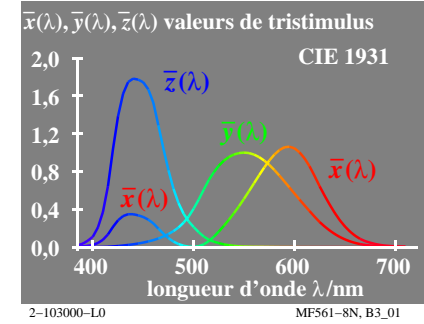
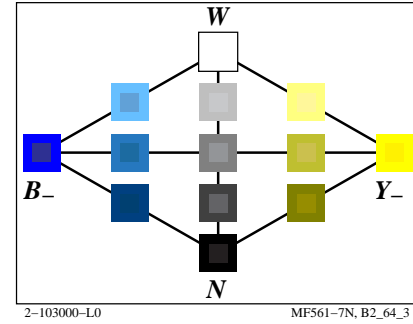
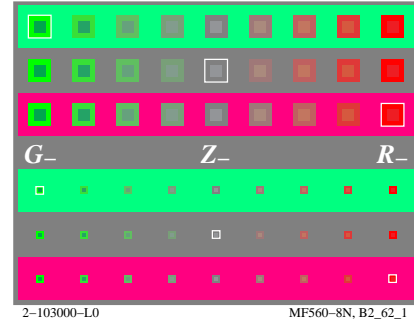
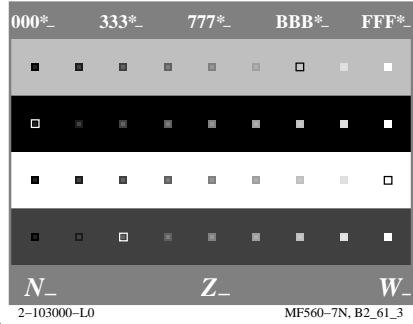
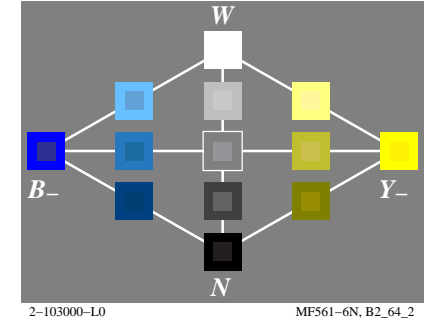
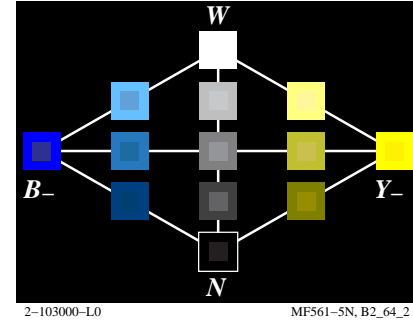
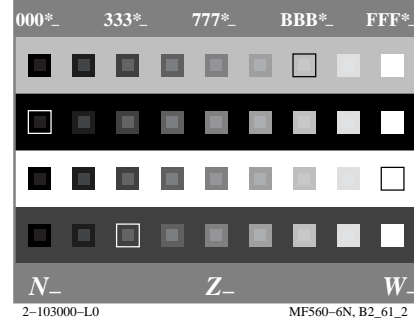
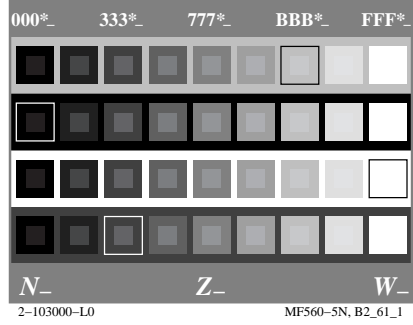
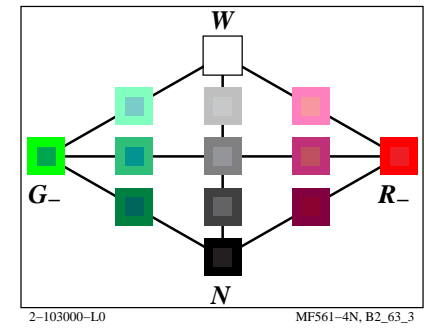
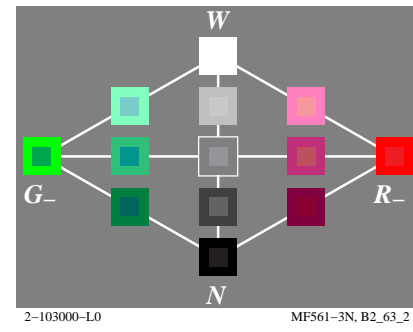
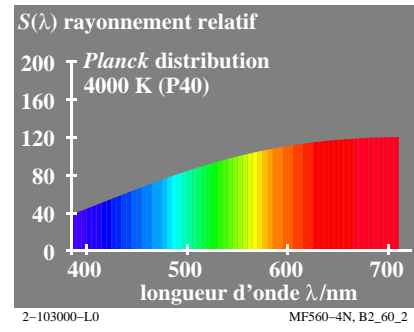
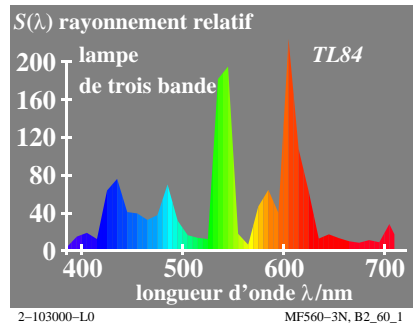
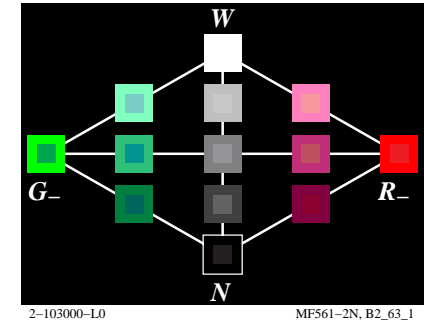
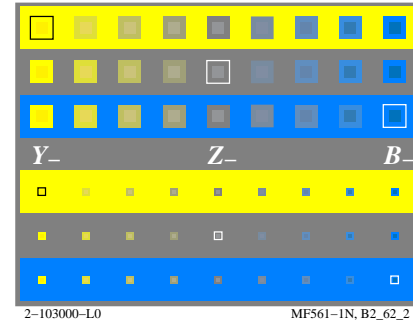
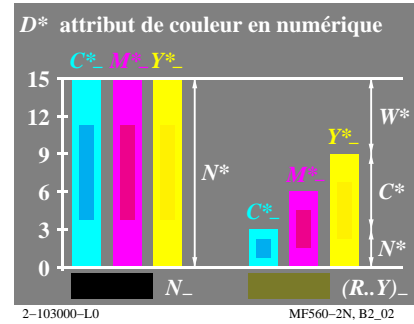
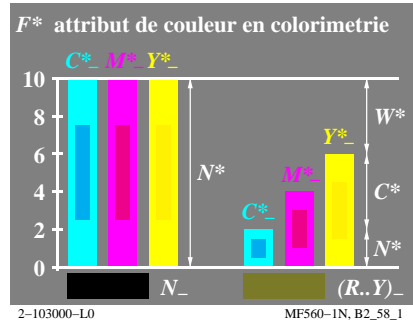
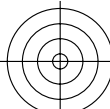


voir fichiers similaires: <http://farbe.li.tu-berlin.de/MF56/MF56.HTM>
<http://130.149.60.45/~farbmetrik> ou <http://farbe.li.tu-berlin.de>

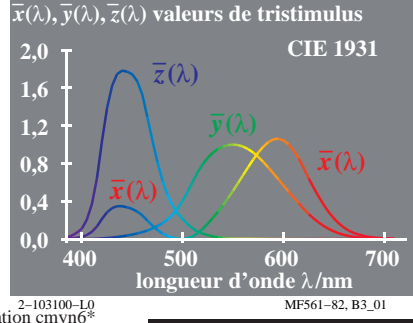
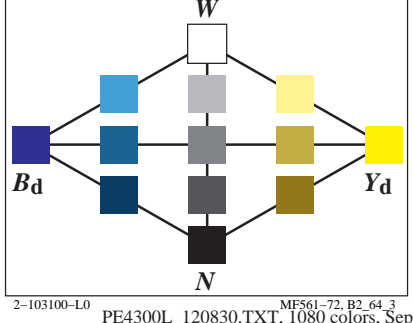
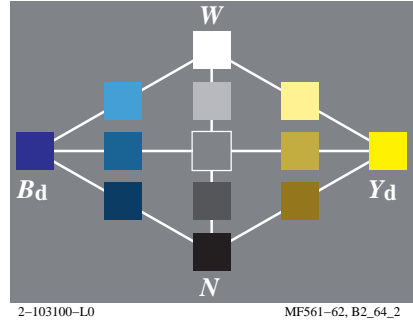
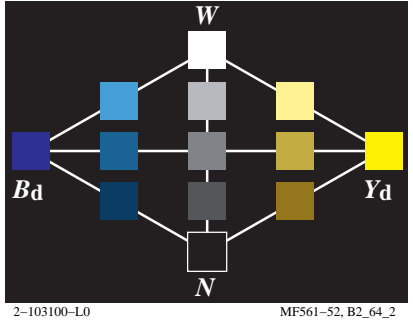
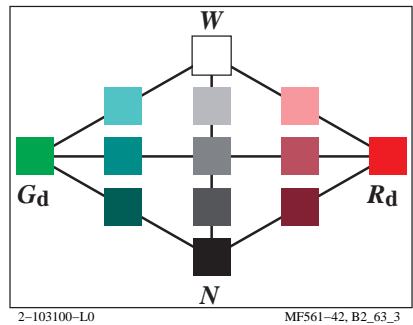
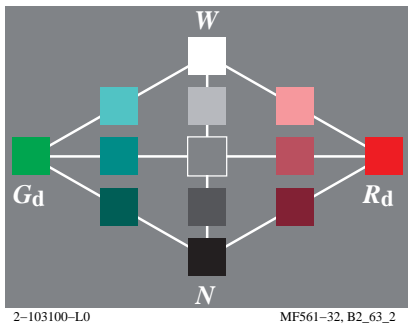
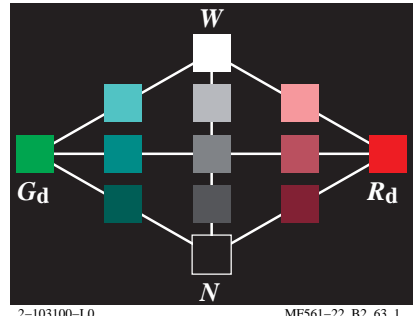
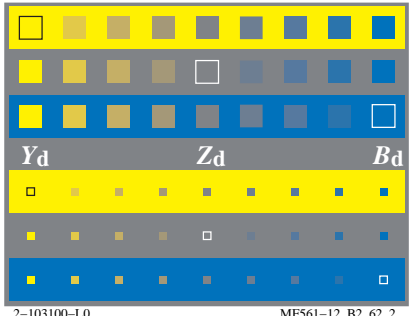
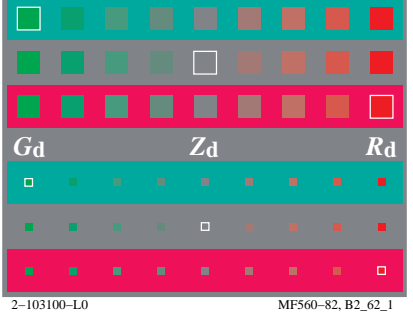
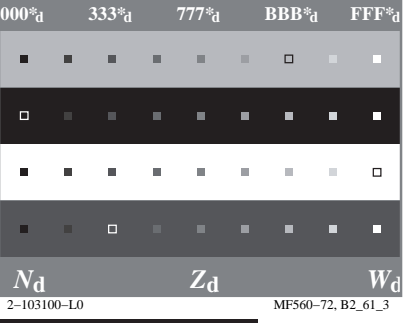
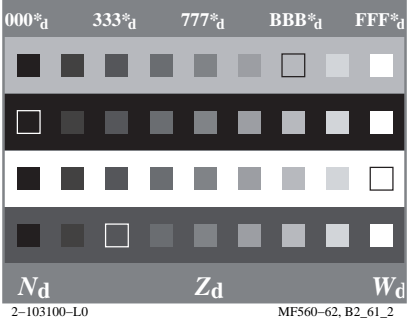
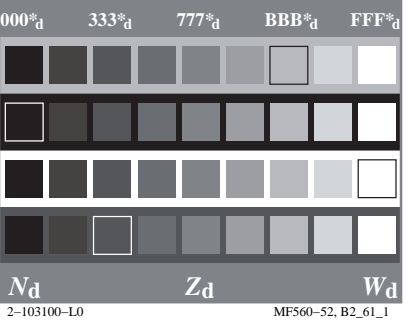
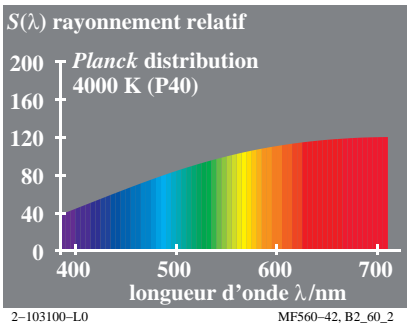
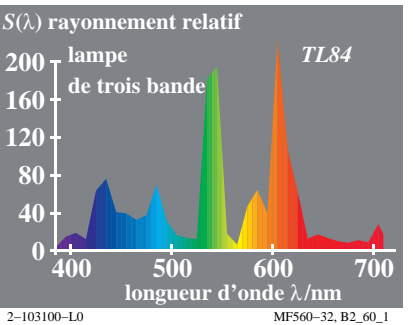
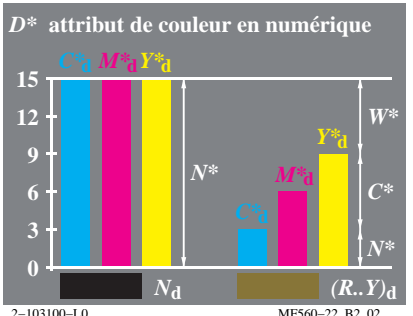
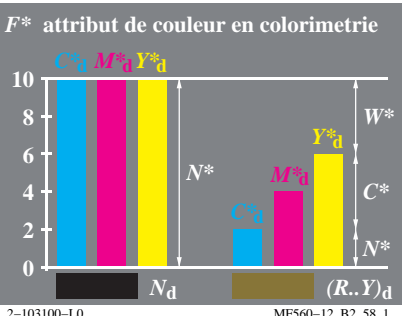
TUB enregistrement: 20190801-MF56/MF56L0FP.PDF /PS
application pour la mesure de sortie sur écran

TUB matériel: code=rh4ta



voir fichiers similaires: <http://farbe.li.tu-berlin.de/MF56/MF56.HTM>
<http://130.149.60.45/~farbnetrik> ou <http://farbe.li.tu-berlin.de>

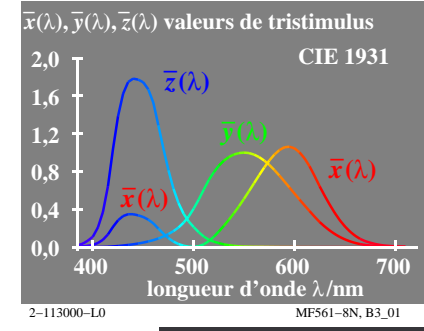
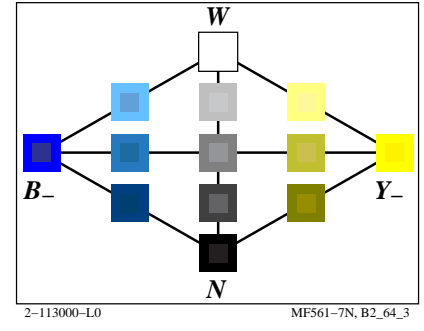
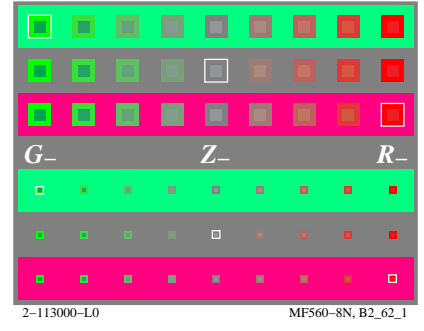
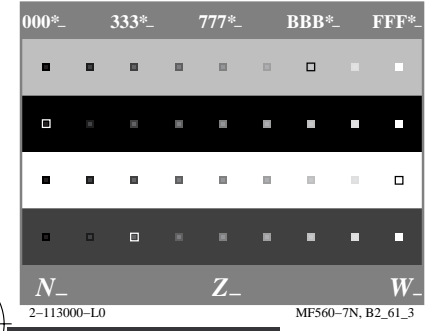
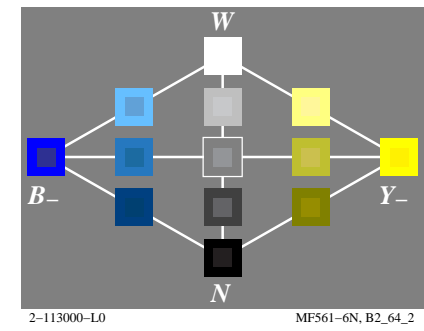
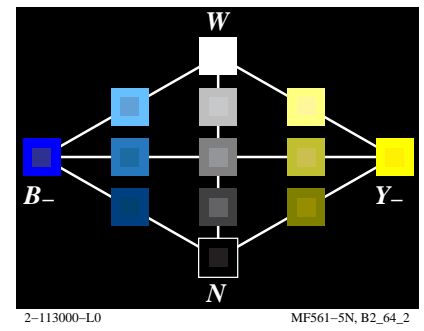
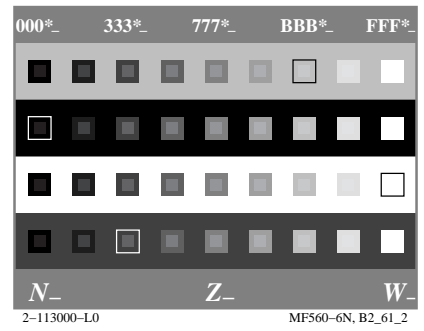
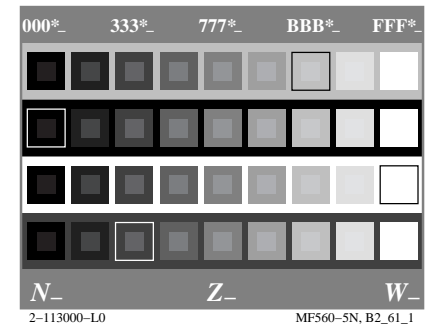
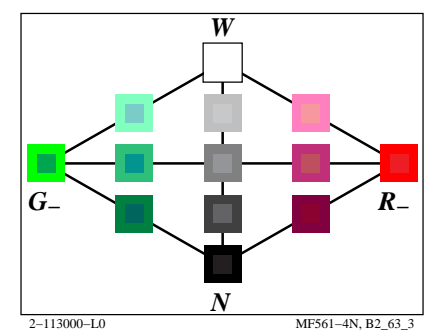
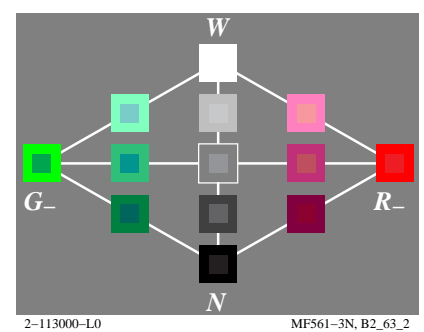
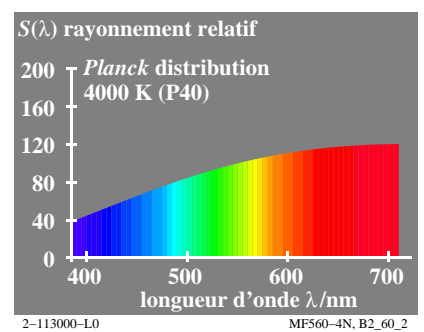
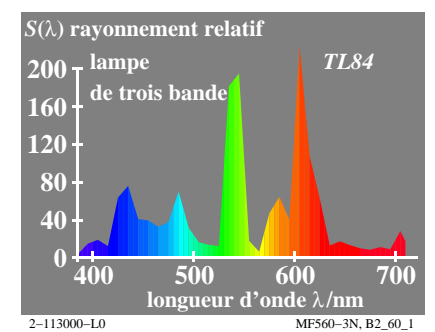
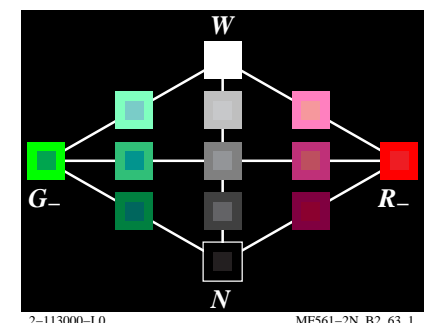
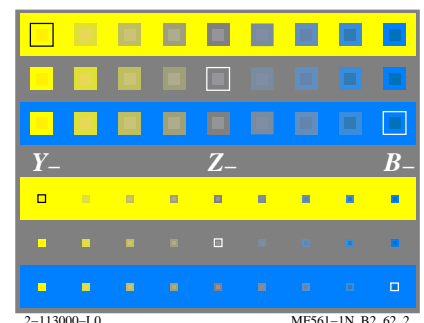
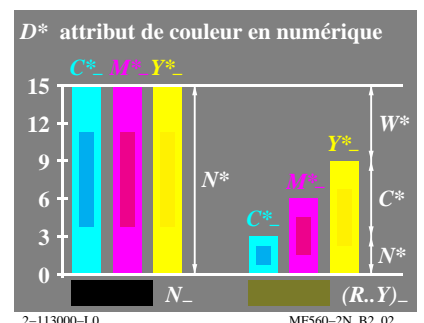
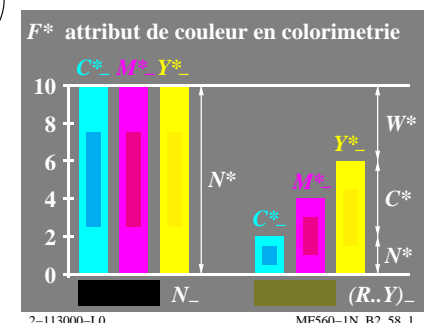
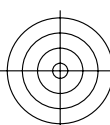
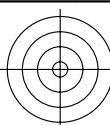
TUB enregistrement: 20190801-MF56/MF56L0FP.PDF / .PS TUB matériel: code=rh4ta
 application pour la mesure de sortie sur écran, aucune séparation



voir fichiers similaires: <http://farbe.li.tu-berlin.de/MF56/MF56.HTM>
<http://130.149.60.45/~farbmetrik> ou <http://farbe.li.tu-berlin.de>

TUB enregistrement: 20190801-MF56/MF56L0FP.PDF /PS
application pour la mesure de sortie sur écran

TUB matériel: code=rh4ta



voir fichiers similaires: <http://farbe.li.tu-berlin.de/MF56/MF56.HTM>
<http://130.149.60.45/~farbmetrik> ou <http://farbe.li.tu-berlin.de>

TUB enregistrement: 20190801-MF56/MF56L0FP.PDF / .PS TUB matériel: code=rh4ta
 application pour la mesure de sortie sur écran, aucune séparation

