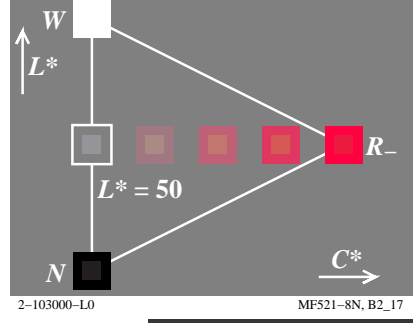
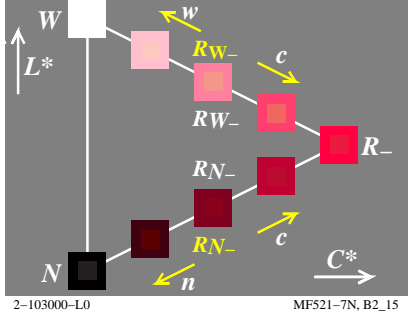
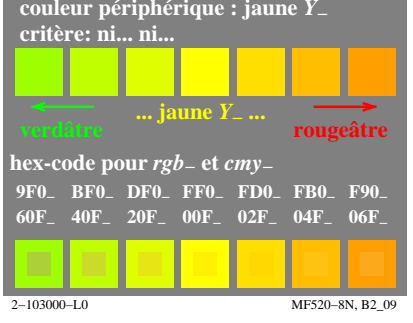
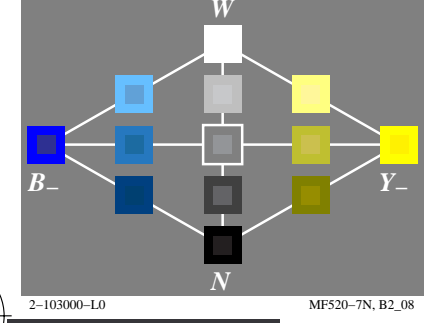
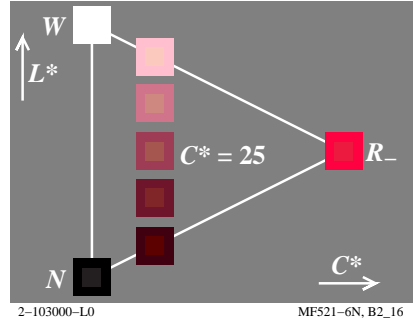
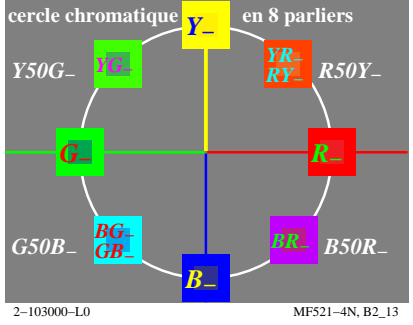
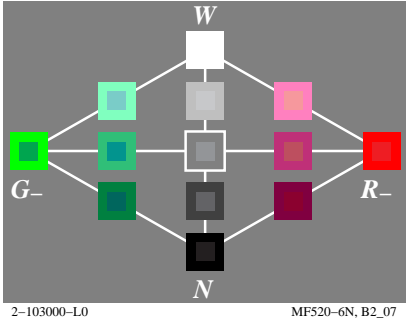
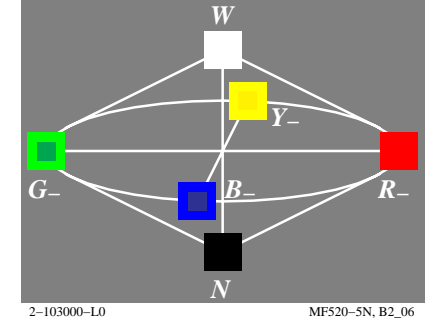
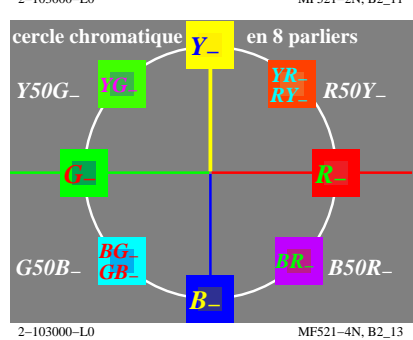
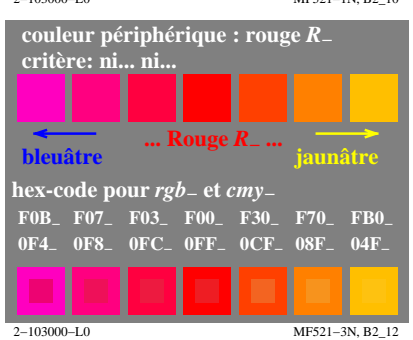
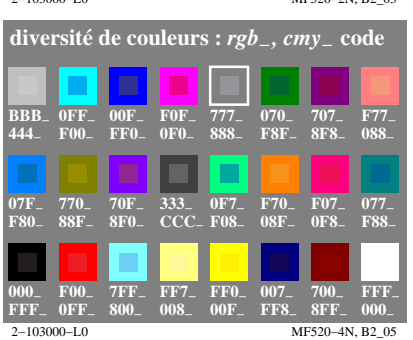
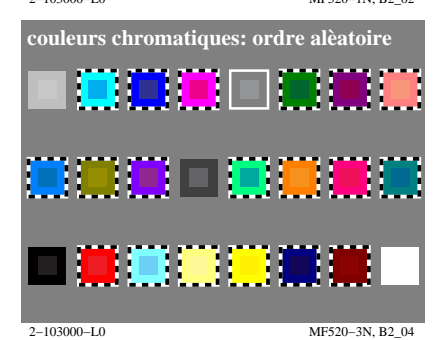
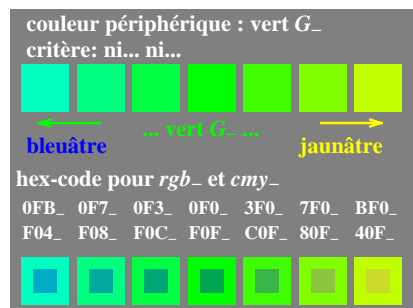
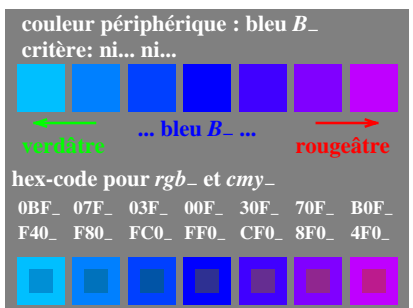
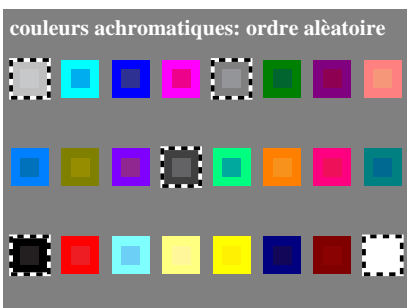
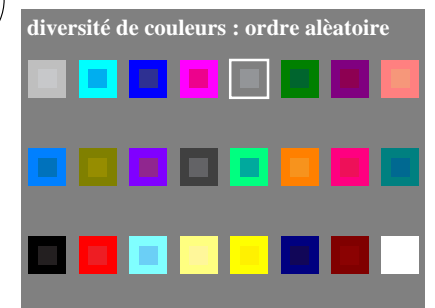
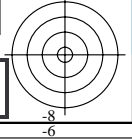
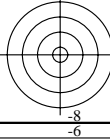
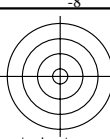


voir fichiers similaires: <http://farbe.li.tu-berlin.de/MF52/MF52.HTM>  
<http://130.149.60.45/~farbmetrik> ou <http://farbe.li.tu-berlin.de>

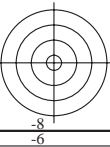
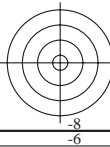
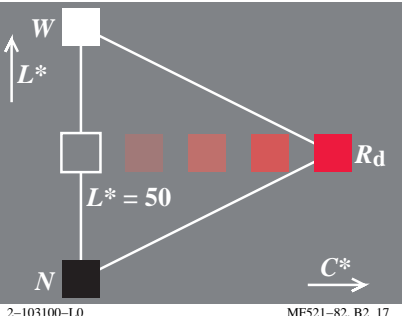
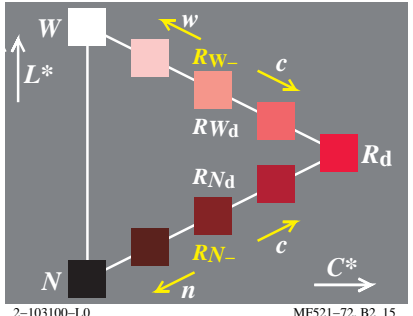
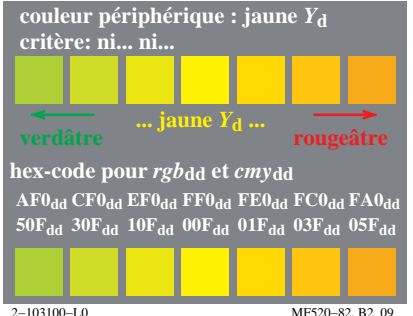
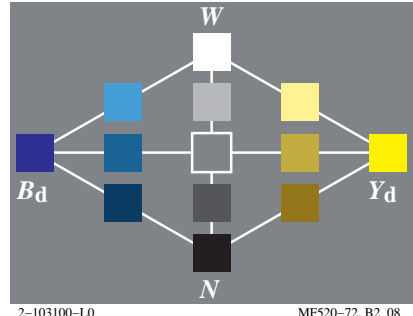
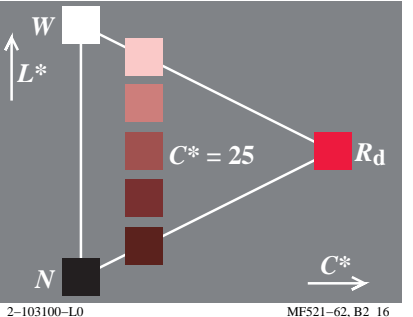
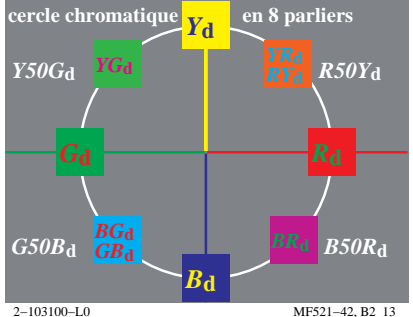
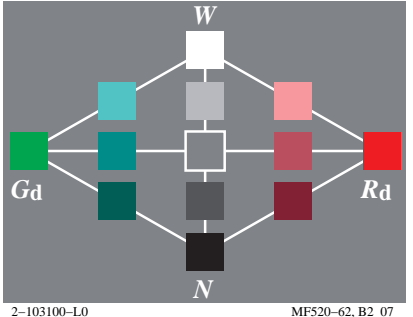
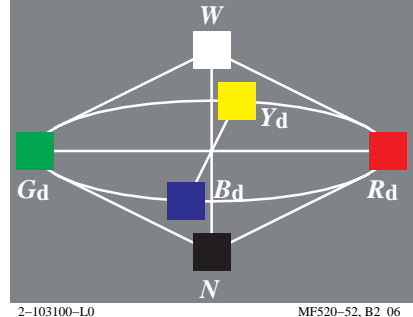
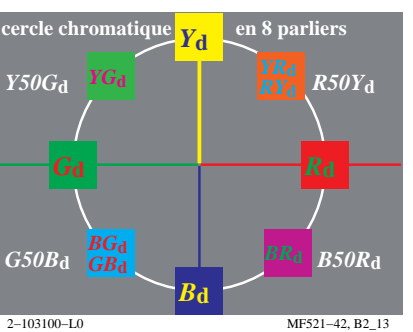
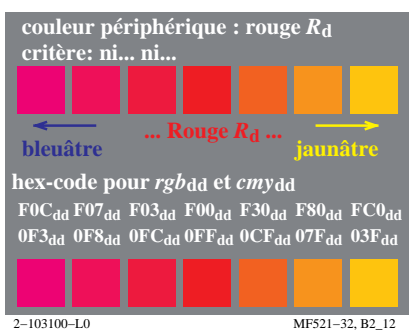
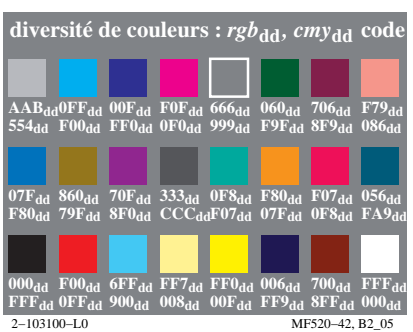
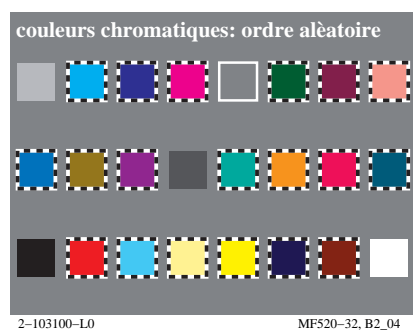
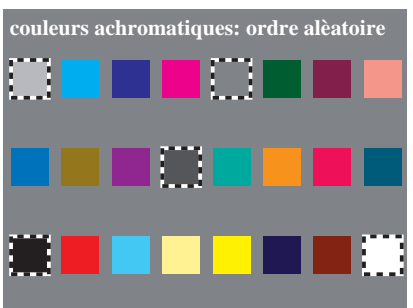
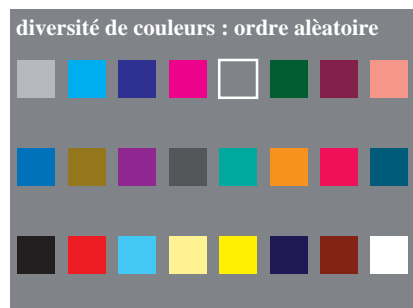
TUB enregistrement: 20190801-MF52/MF52L0FA.TXT /.PS  
application pour la mesure de sortie sur écran

TUB matériel: code=rh4ta



voir fichiers similaires: <http://farbe.li.tu-berlin.de/MF52/MF52.HTM>  
<http://130.149.60.45/~farbmetrik> ou <http://farbe.li.tu-berlin.de>

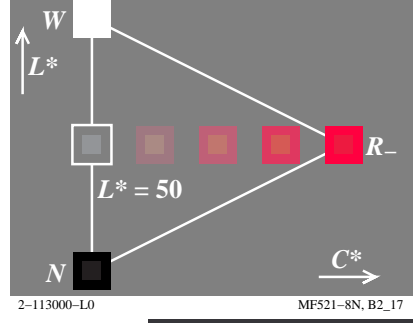
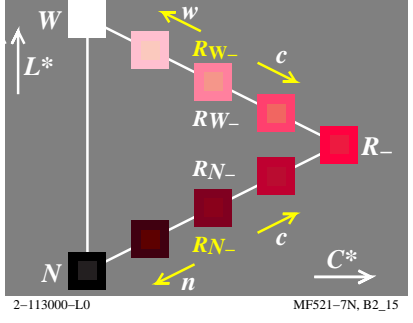
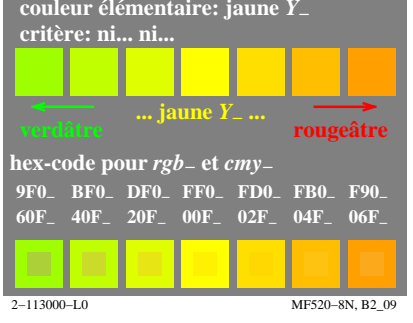
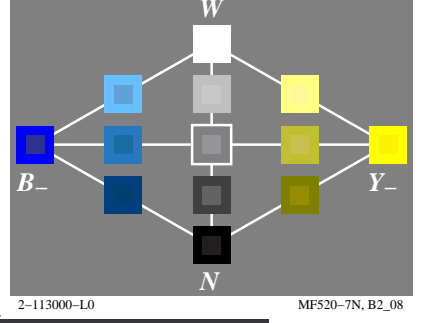
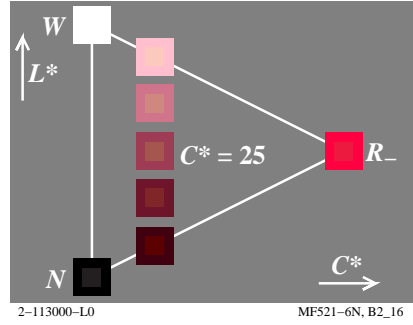
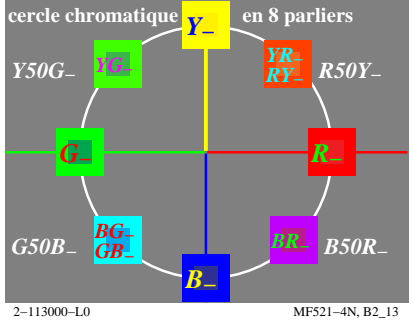
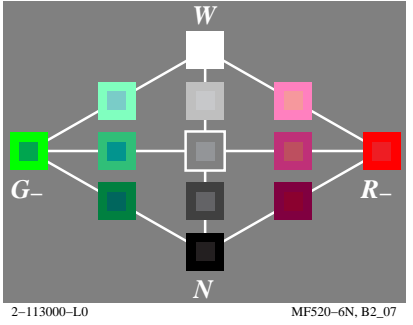
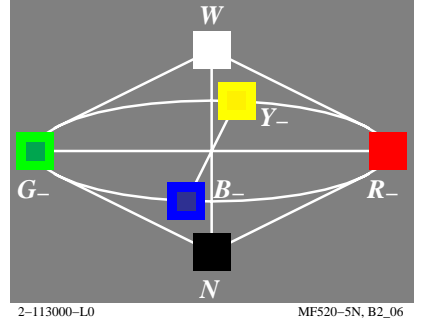
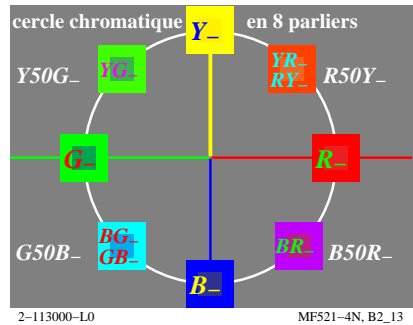
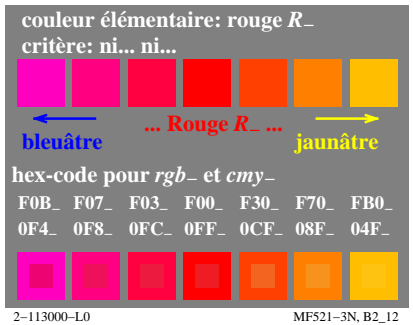
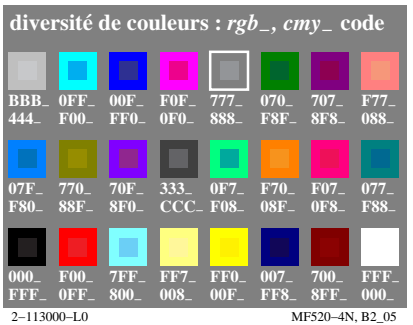
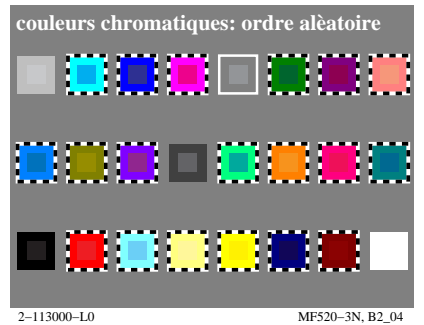
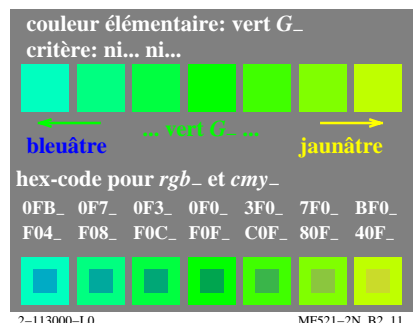
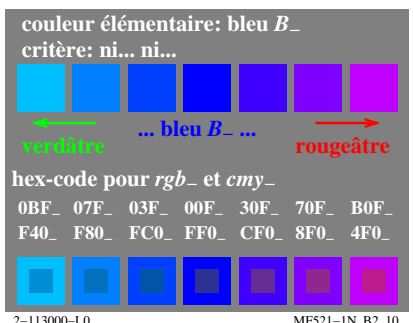
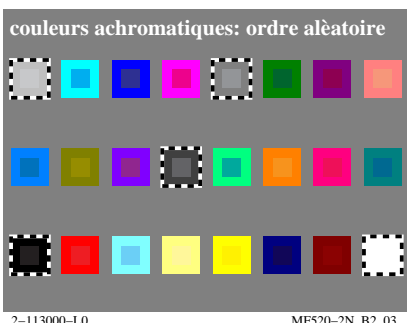
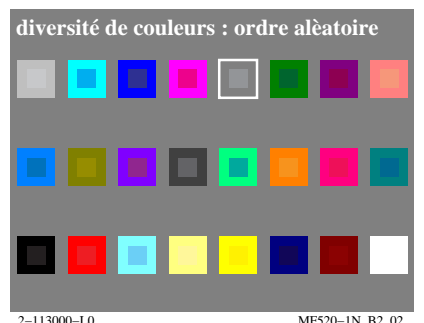
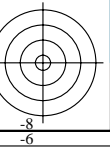
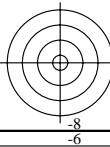
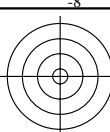
TUB enregistrement: 20190801-MF52/MF52L0FA.TXT /.PS  
application pour la mesure de sortie sur écran, aucune séparation  
TUB matériel: code=rh4ta



voir fichiers similaires: <http://farbe.li.tu-berlin.de/MF52/MF52.HTM>  
<http://130.149.60.45/~farbmetrik> ou <http://farbe.li.tu-berlin.de>

TUB enregistrement: 20190801-MF52/MF52L0FA.TXT /.PS  
application pour la mesure de sortie sur écran

TUB matériel: code=rh4ta



voir fichiers similaires: <http://farbe.li.tu-berlin.de/MF52/MF52.HTM>  
<http://130.149.60.45/~farbmatrik> ou <http://farbe.li.tu-berlin.de>

TUB enregistrement: 20190801-MF52/MF52L0FA.TXT /.PS  
application pour la mesure de sortie sur écran, aucune séparation  
TUB matériel: code=rh4ta

