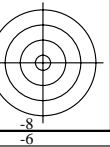
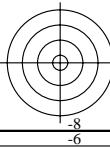
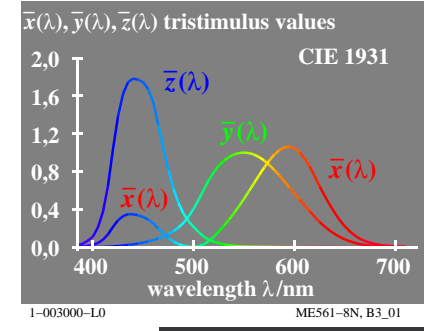
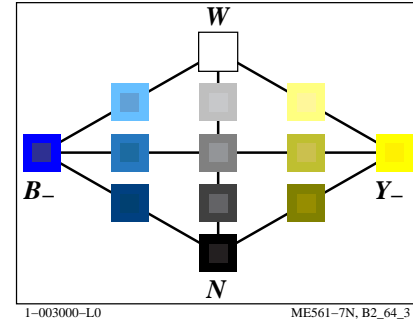
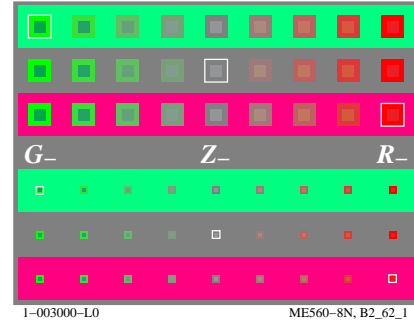
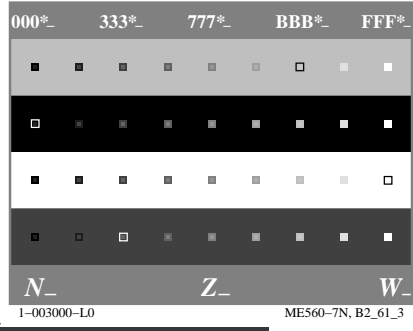
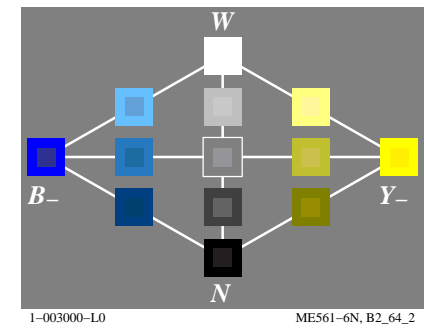
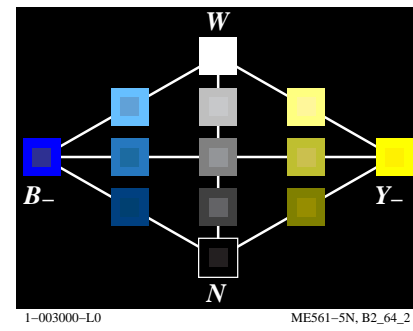
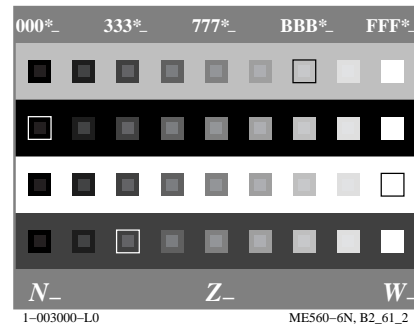
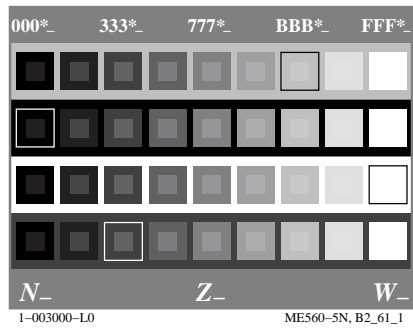
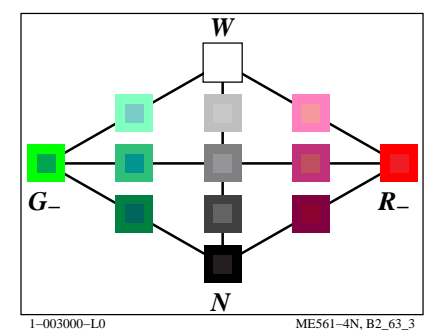
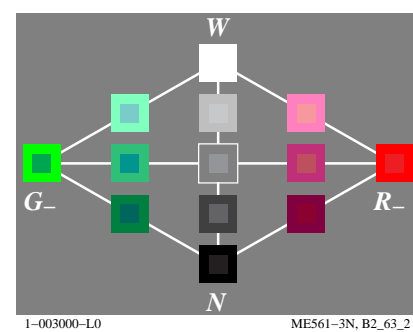
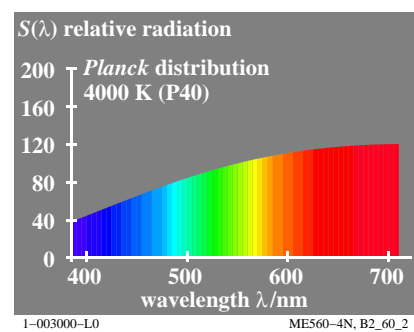
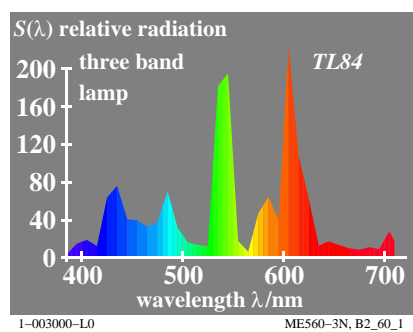
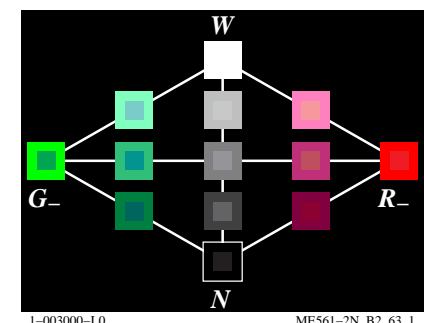
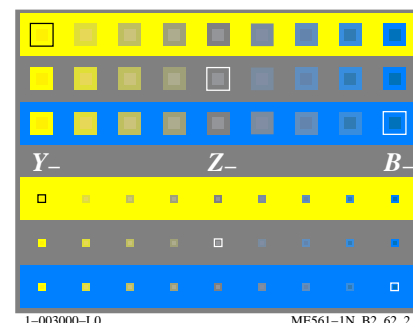
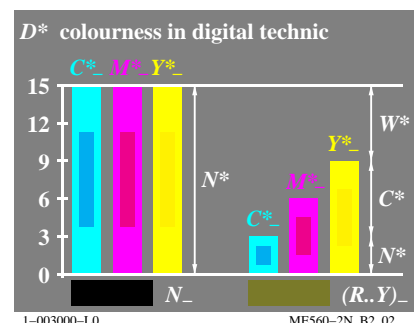
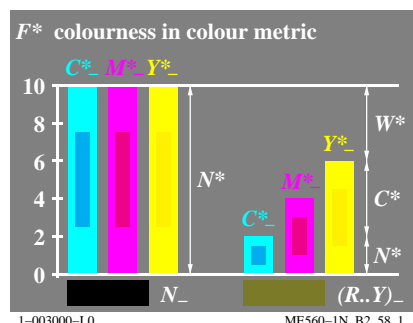
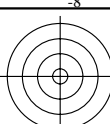


http://farbe.li.tu-berlin.de/ME56/ME56LONP.PDF /.PS; start output
N: no 3D-linearization (OL) in file (F) or PS-startup (S), page 1/2

see similar files: <http://farbe.li.tu-berlin.de/ME56/ME56.HTM>
<http://130.149.60.45/~farbmetrik> or <http://farbe.li.tu-berlin.de>

TUB registration: 20190801-ME56/ME56LONP.PDF /.PS
application for measurement of display output

TUB material: code=rh4ta



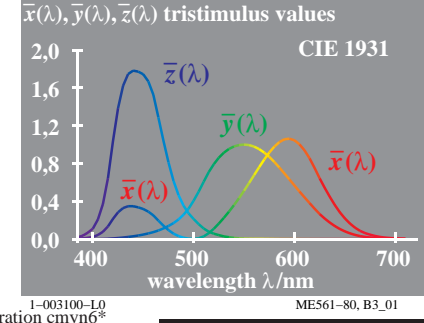
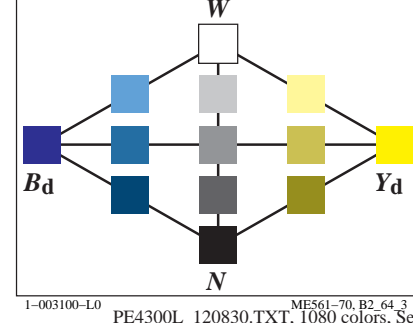
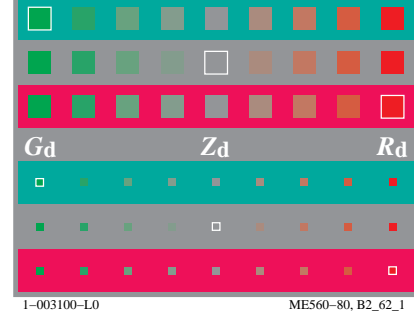
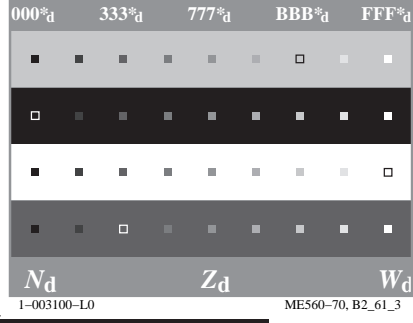
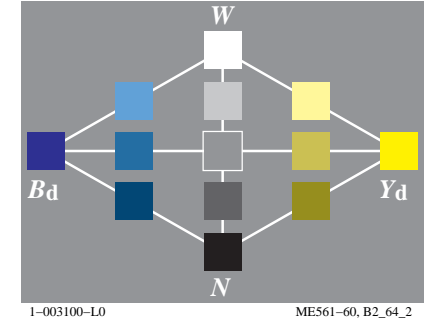
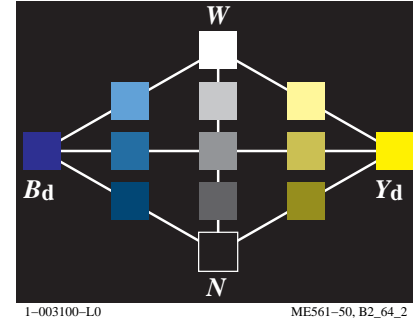
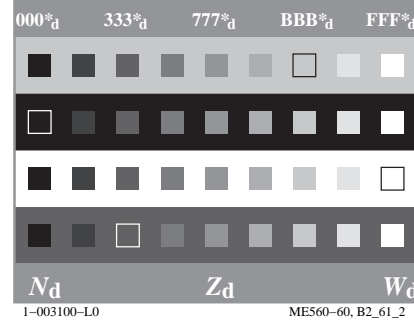
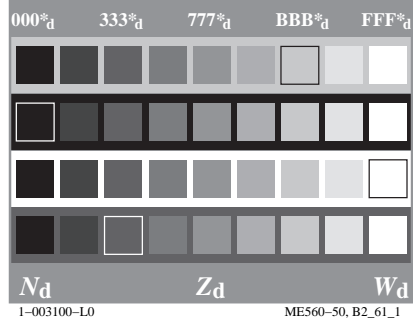
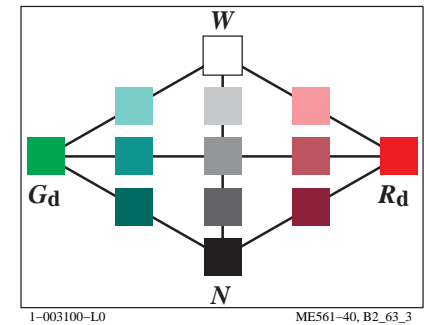
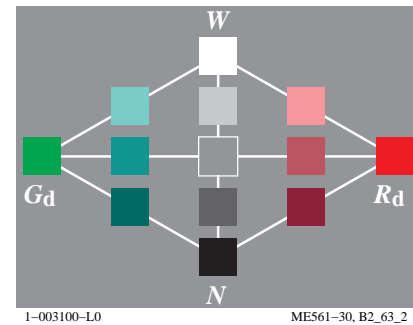
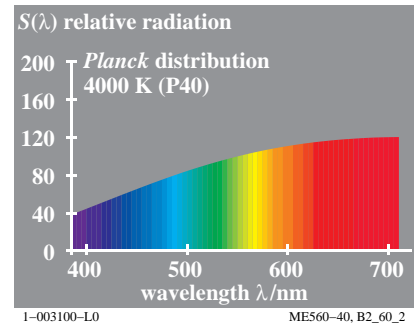
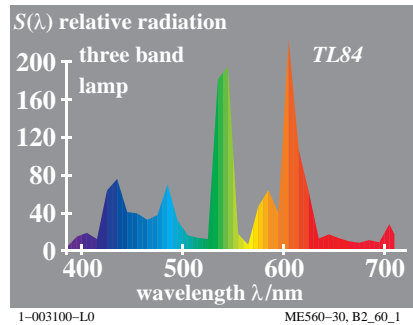
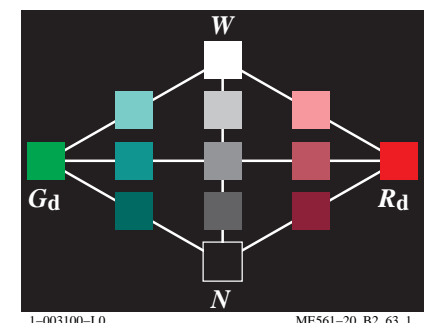
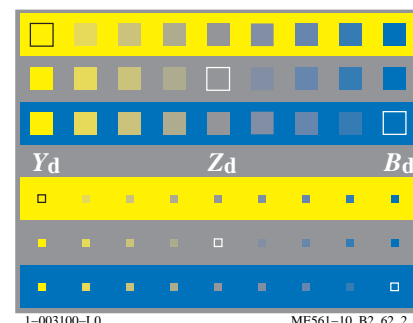
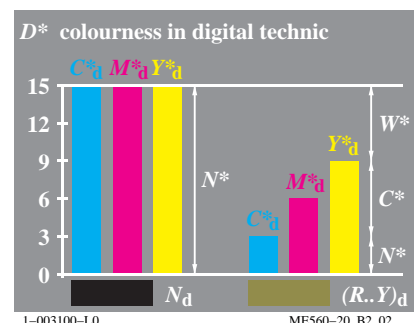
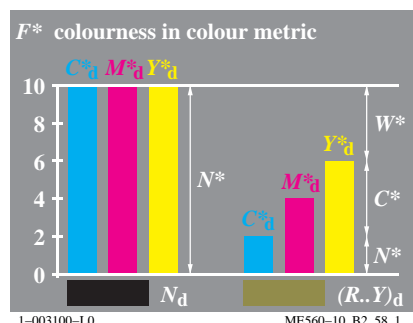
TUB-test chart ME56; Computer graphics and colorimetry
Image series ME56, 3D=0, de=0

input: rgb/cmyk -> rgb/cmyk
output: no change

see similar files: <http://farbe.li.tu-berlin.de/ME56/ME56L0NP.PDF> / .PS
<http://130.149.60.45/~farbmertik> or <http://farbe.li.tu-berlin.de>

TUB registration: 20190801-ME56/ME56L0NP.PDF /.PS
application for measurement of display output, no separation

TUB material: code=rh4ta

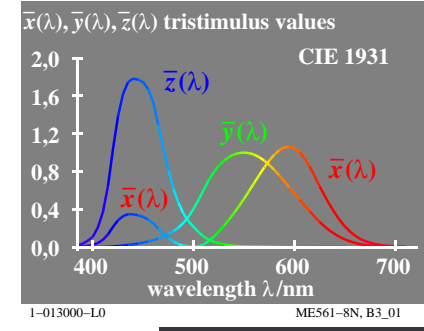
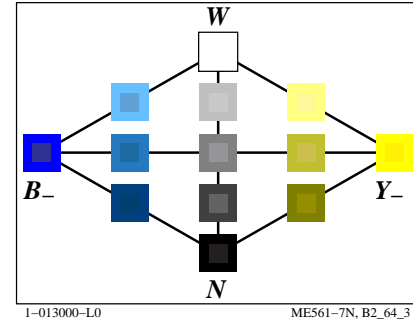
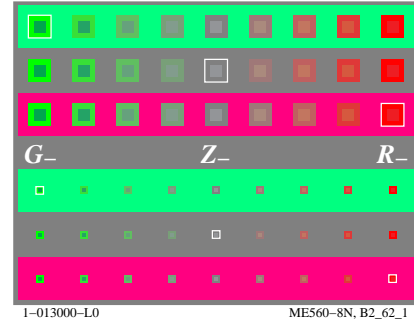
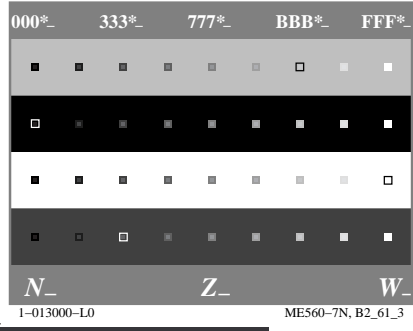
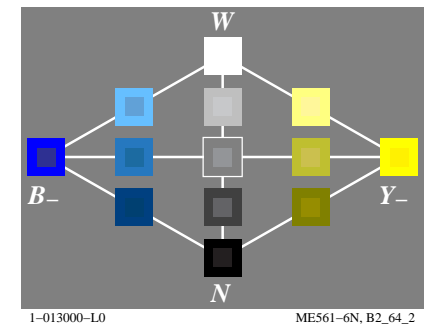
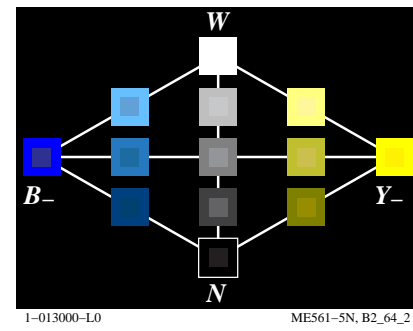
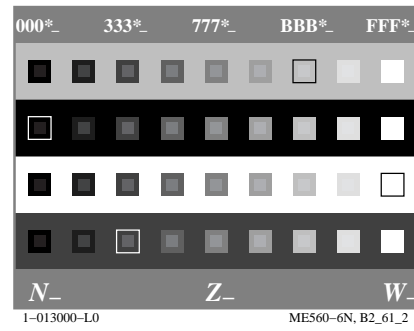
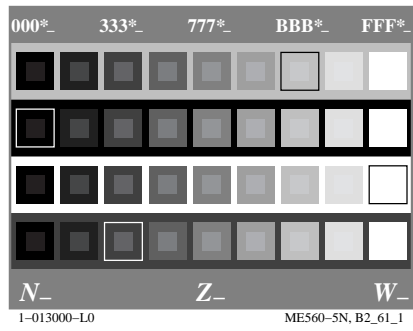
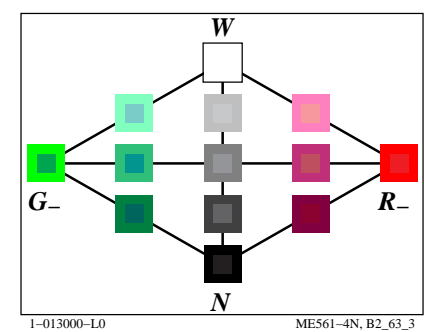
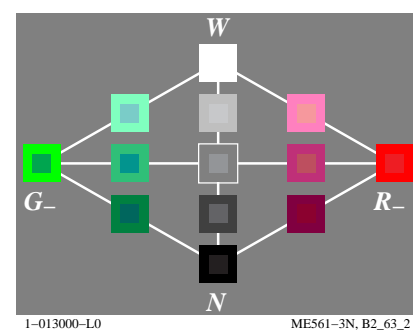
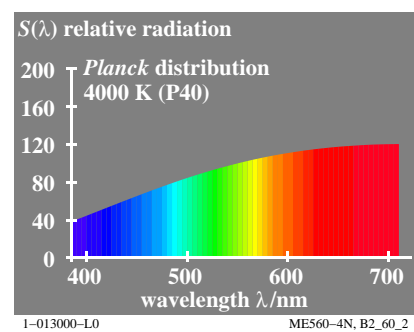
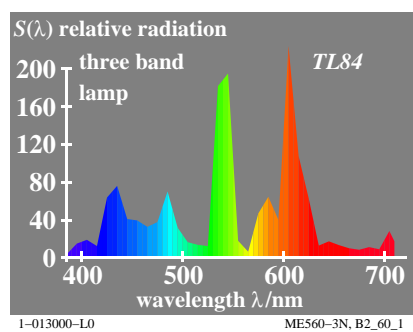
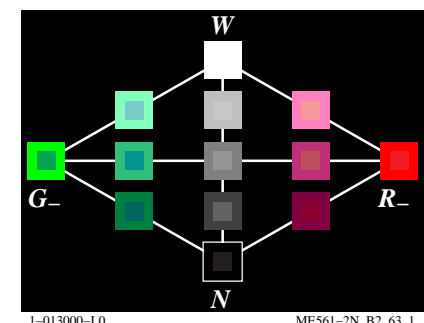
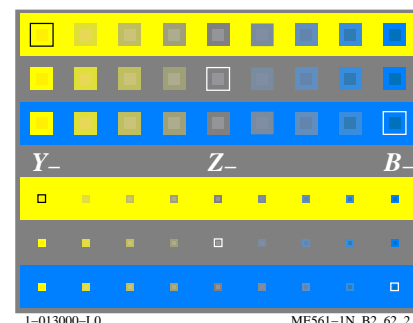
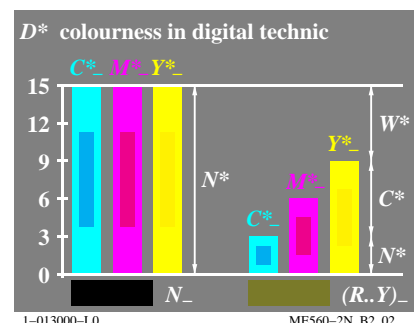
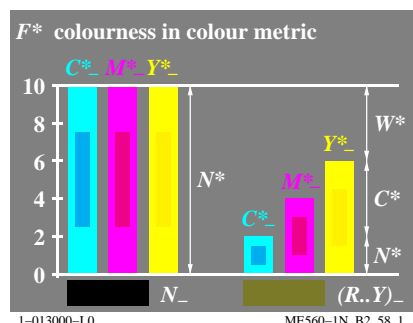


http://farbe.li.tu-berlin.de/ME56/ME56LONP.PDF /.PS; start output
N: no 3D-linearization (OL) in file (F) or PS-startup (S), page 1/2

see similar files: <http://farbe.li.tu-berlin.de/ME56/ME56.HTM>
<http://130.149.60.45/~farbmetrik> or <http://farbe.li.tu-berlin.de>

TUB registration: 20190801-ME56/ME56LONP.PDF /.PS
application for measurement of display output

TUB material: code=rh4ta



TUB-test chart ME56; Computer graphics and colorimetry
Image series ME56, 3D=0, de=1

input: rgb/cmyk -> rgb/cmyk
output: no change



see similar files: <http://farbe.li.tu-berlin.de/ME56/ME56L0NP.PDF> / .PS
<http://130.149.60.45/~farbmatrik> or <http://farbe.li.tu-berlin.de>

TUB registration: 20190801-ME56/ME56L0NP.PDF /.PS
 application for measurement of display output, no separation

TUB material: code=rh4ta

