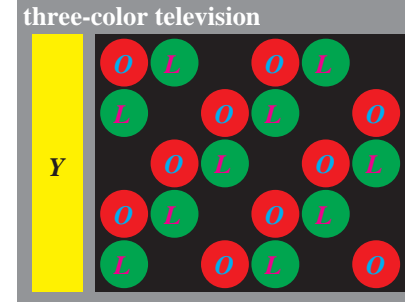
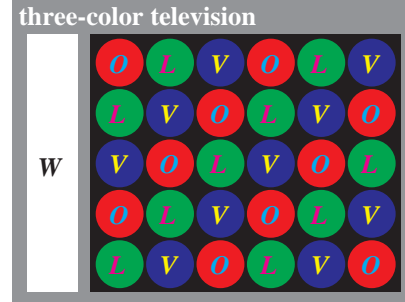


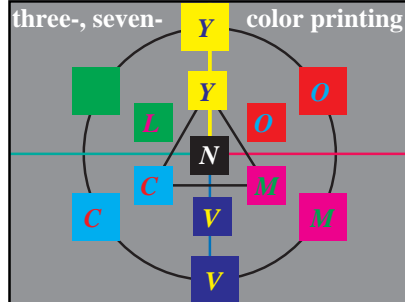
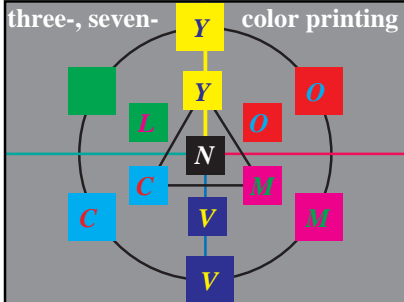
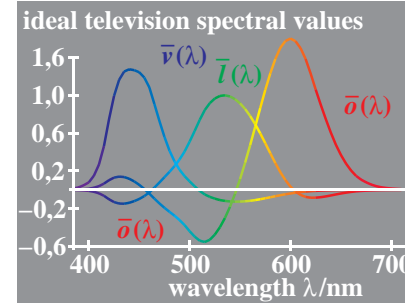
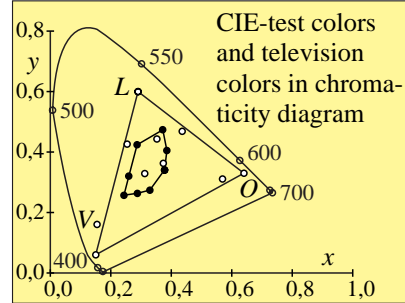
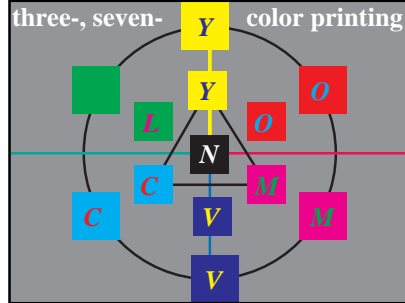
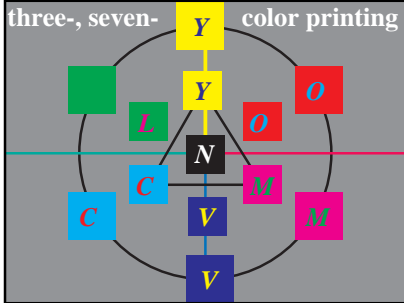
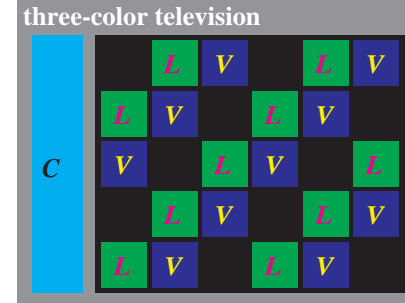
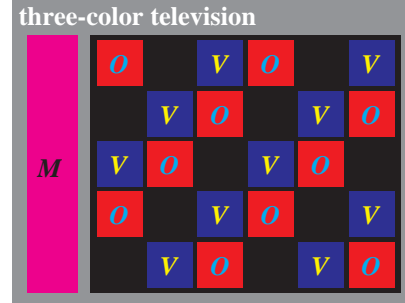
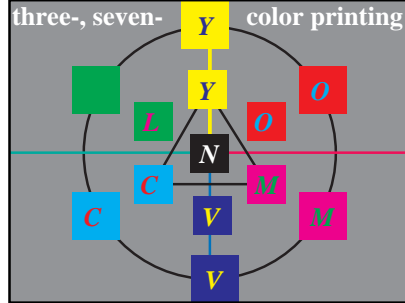
http://130.149.60.45/~farbmetrik/ME21/ME21LONA.TXT /PS; start output
 N: No Output Linearization (OL) data in File (F), Startup (S) or Device (D)

colorness	color number	luminous value
$O^* L^* V^*$	$n \ h^* \ d$	$Y (Y_Y = 76 \text{ print})$
15,15,15	7 FFF*	4095 76+5-(81/81)
15,15,13	- FFD*	4093 76+5-(64/81)
15,15,11	- FFB*	4091 76+5-(49/81)
15,15, 9	- FF9*	4089 76+5-(36/81)
15,15, 7	- FF7*	4087 76+5-(25/81)
15,15, 5	- FF5*	4085 76+5-(16/81)
15,15, 3	- FF3*	4083 76+5-(9/81)
15,15, 1	- FF1*	4081 76+5-(4/81)
15,15, 0	3 FF0*	4080 76+5-(0/81)

colorness	color number	luminous value
$O^* L^* V^*$	$n \ h^* \ d$	$Y (Y_M = 17 \text{ print})$
15,15,15	7 FFF*	4095 17+64-(81/81)
15,13,15	- FDF*	4063 17+64-(64/81)
15,11,15	- FBF*	4031 17+64-(49/81)
15, 9,15	- F9F*	3999 17+64-(36/81)
15, 7,15	- F7F*	3967 17+64-(25/81)
15, 5,15	- F5F*	3935 17+64-(16/81)
15, 3,15	- F3F*	3903 17+64-(9/81)
15, 1,15	- F1F*	3871 17+64-(4/81)
15, 0,15	5 F0F*	3855 17+64-(0/81)



colorness	color number	luminous value
$O^* L^* V^*$	$n \ h^* \ d$	$Y (Y_C = 21 \text{ print})$
15,15,15	7 FFF*	4095 21+60-(81/81)
13,15,15	- DFF*	3583 21+60-(64/81)
11,15,15	- BFF*	3071 21+60-(49/81)
9,15,15	- 9FF*	2559 21+60-(36/81)
7,15,15	- 7FF*	2047 21+60-(25/81)
5,15,15	- 5FF*	1535 21+60-(16/81)
3,15,15	- 3FF*	1023 21+60-(9/81)
1,15,15	- 1FF*	511 21+60-(4/81)
0,15,15	6 0FF*	255 21+60-(0/81)



colorness	color number	digital rel. value
$O^* L^* V^*$	$n \ h^* \ d$	$D (Y_W = 100 \text{ video})$
15,15,15	7 FFF*	4095 100-(81/81)-2,55
13,13,13	- DDD*	3549 100-(64/81)-2,55
11,11,11	- BBB*	3003 100-(49/81)-2,55
9, 9, 9	- 999*	2457 100-(36/81)-2,55
7, 7, 7	8 777*	1911 100-(25/81)-2,55
5, 5, 5	- 555*	1365 100-(16/81)-2,55
3, 3, 3	- 333*	819 100-(9/81)-2,55
1, 1, 1	- 111*	273 100-(4/81)-2,55
0, 0, 0	0 000*	0 100-(2/81)-2,55

colorness	color number	digital rel. value
$O^* L^* V^*$	$n \ h^* \ d$	$D (Y_L = 71 \text{ video})$
0,15, 0	2 0F0*	240 71-(81/81)-2,55
0,13, 0	- 0D0*	208 71-(64/81)-2,55
0,11, 0	- 0B0*	176 71-(49/81)-2,55
0, 9, 0	- 090*	144 71-(36/81)-2,55
0, 7, 0	10 070*	112 71-(25/81)-2,55
0, 5, 0	- 050*	80 71-(16/81)-2,55
0, 3, 0	- 030*	48 71-(9/81)-2,55
0, 1, 0	- 010*	16 71-(4/81)-2,55
0, 0, 0	0 000*	0 81-(2/81)-2,55

TUB-test chart ME21; Richter: Computer graphics, colorimetry
 Colour book series: Colour order and reproduction no. 3

input: *cmymk setcmymkcolor*
 output: no colour data change

TUB registration: 20101101-ME21/ME21LONA.TXT /PS
 application for measurement of printer or monitor systems

TUB material: code=rha4ta

See original or copy: <http://web.me.com/klaus.richter/ME21/ME21LONA.TXT> /PS
 Technical information: <http://www.ps.bam.de> or <http://130.149.60.45/~farbmetrik>