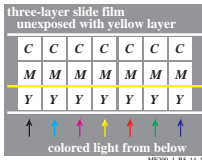
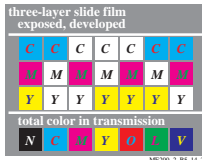


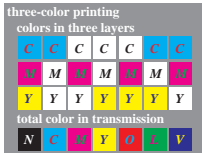
http://130.149.60.45/~farbmetrik/ME20/ME20L0N1.TXT /PS; start output
 N: No Output Linearization (OL) data in File (F), Startup (S) or Device (D)



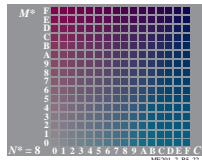
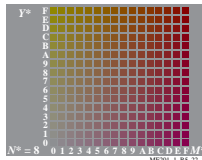
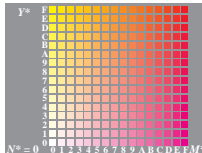
ME200-1, BS_14,1



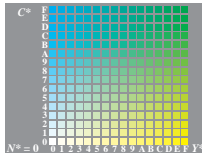
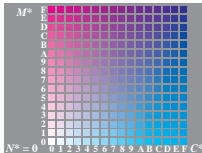
ME200-2, BS_14,2



ME200-3, BS_19

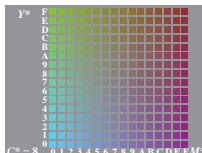
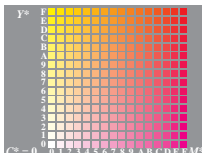


colorness	color number	luminous value
$O^* L^* V^*$	n h^*	d $Y(Y_{70} = 81 \text{ print})$
15,15,15	7 FFF*	4095 81-(81/81)
13,13,13	- DDD*	3549 81-(64/81)
11,11,11	- BBB*	3003 81-(49/81)
9, 9, 9	- 999*	2457 81-(36/81)
7, 7, 7	8 777*	1911 81-(25/81)
5, 5, 5	- 555*	1365 81-(16/81)
3, 3, 3	- 333*	819 81-(9/81)
1, 1, 1	- 111*	273 81-(4/81)
0, 0, 0	0 000*	0 81-(2/81)



colorness	color number	luminous value
$O^* L^* V^*$	n h^*	d $Y(Y_{70} = 16 \text{ print})$
0,15, 0	2 F0F*	240 16-(81/81)
0,13, 0	- 0D0*	208 16-(64/81)
0,11, 0	- 0B0*	176 16-(49/81)
0, 9, 0	- 090*	144 16-(36/81)
0, 7, 0	10 070*	112 16-(25/81)
0, 5, 0	- 050*	80 16-(16/81)
0, 3, 0	- 030*	48 16-(9/81)
0, 1, 0	- 010*	16 16-(4/81)
0, 0, 0	0 000*	0 81-(2/81)

colorness	color number	luminous value
$O^* L^* V^*$	n h^*	d $Y(Y_{70} = 76 \text{ print})$
15,15, 0	3 FF0*	4080 76-(81/81)
13,13, 0	- DD0*	3536 76-(64/81)
11,11, 0	- BB0*	2992 76-(49/81)
9, 9, 0	- 990*	2448 76-(36/81)
7, 7, 0	11 770*	1904 76-(25/81)
5, 5, 0	- 550*	1360 76-(16/81)
3, 3, 0	- 330*	816 76-(9/81)
1, 1, 0	- 110*	272 76-(4/81)
0, 0, 0	0 000*	0 81-(2/81)



colorness	color number	luminous value
$O^* L^* V^*$	n h^*	d $Y(Y_{70} = 17 \text{ print})$
15, 0,15	5 F0F*	3855 17-(81/81)
13, 0,13	- D0D*	3341 17-(64/81)
11, 0,11	- B0B*	2827 17-(49/81)
9, 0, 9	- 909*	2313 17-(36/81)
7, 0, 7	13 707*	1799 17-(25/81)
5, 0, 5	- 505*	1285 17-(16/81)
3, 0, 3	- 303*	771 17-(9/81)
1, 0, 1	- 101*	257 17-(4/81)
0, 0, 0	0 000*	0 81-(2/81)

colorness	color number	luminous value
$O^* L^* V^*$	n h^*	d $Y(Y_{70} = 21 \text{ print})$
0,15,15	6 0FF*	255 21-(81/81)
0,13,13	- 0DD*	221 21-(64/81)
0,11,11	- 0BB*	187 21-(49/81)
0, 9, 9	- 099*	153 21-(36/81)
0, 7, 7	14 077*	119 21-(25/81)
0, 5, 5	- 055*	85 21-(16/81)
0, 3, 3	- 033*	51 21-(9/81)
0, 1, 1	- 011*	17 21-(4/81)
0, 0, 0	0 000*	0 81-(2/81)

TUB-test chart ME20; Richter: Computer graphics, colorimetry
 Colour book series: Colour order and reproduction no. 2

input: *cmyp setcmymkcolor*
 output: no colour data change

See original or copy: http://web.me.com/Klaus_richter/ME20/ME20L0N1.TXT /PS
 Technical information: <http://www.ps.bam.de> or <http://130.149.60.45/~farbmetrik>

TUB registration: 20101101-ME20/ME20L0N1.TXT /PS
 application for measurement of printer or monitor systems

TUB material: code=thata