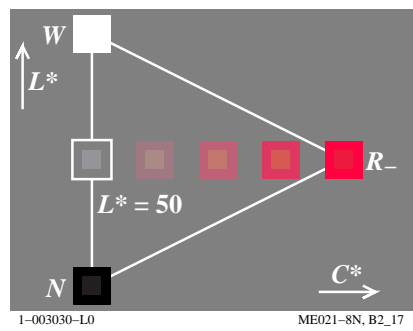
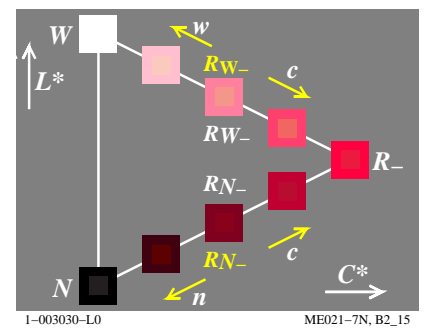
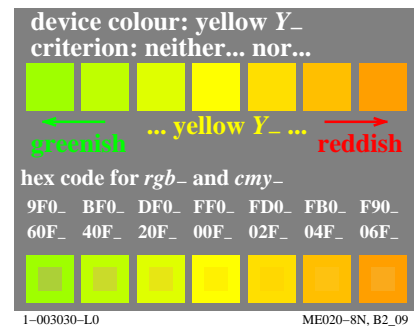
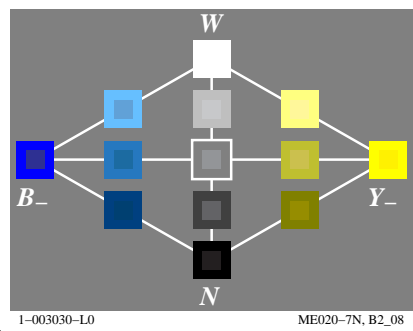
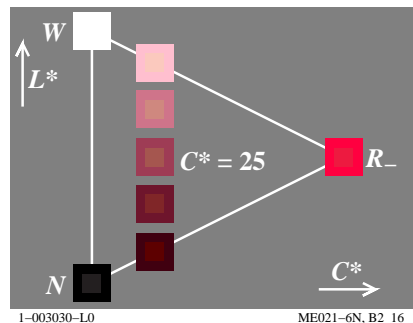
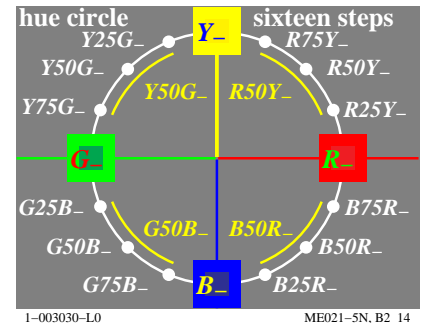
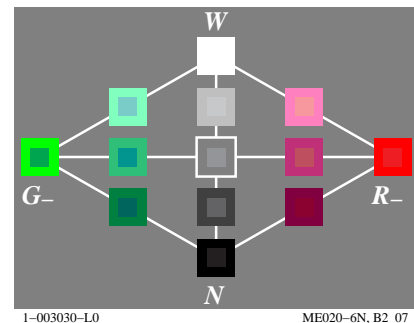
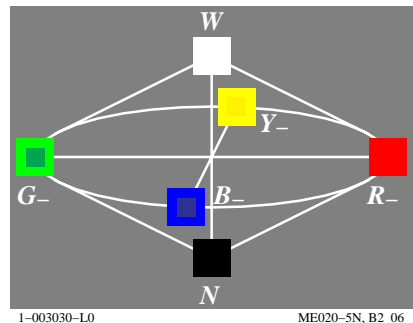
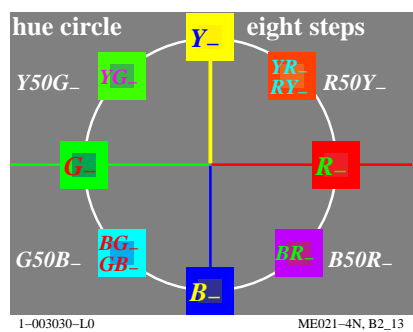
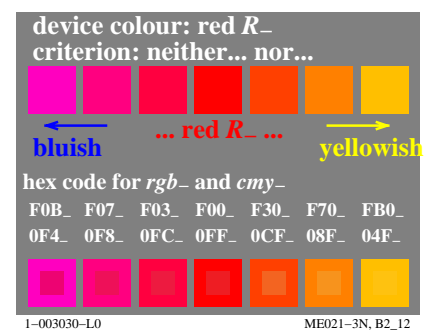
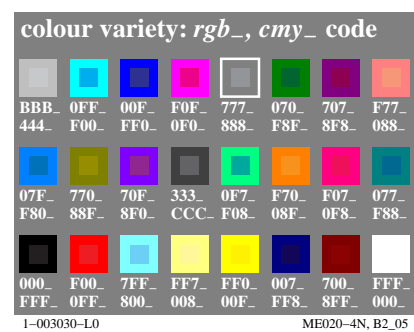
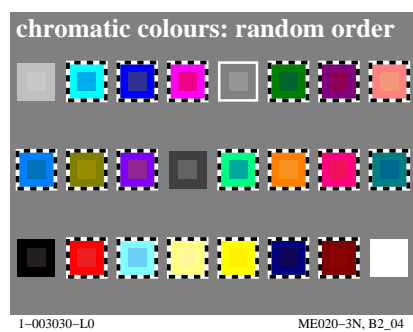
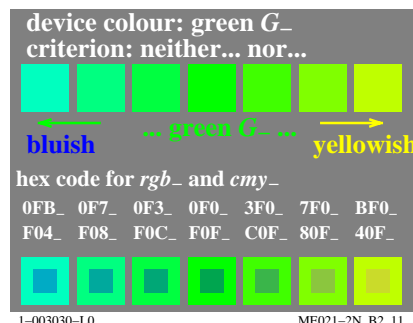
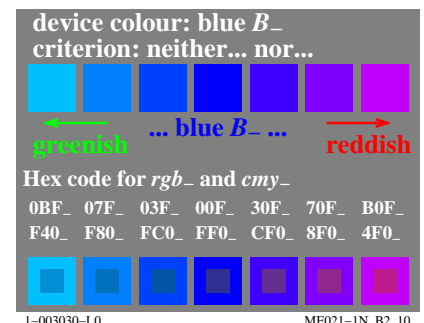
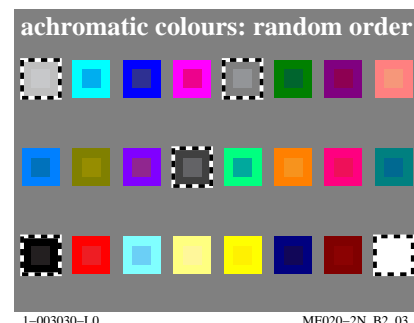
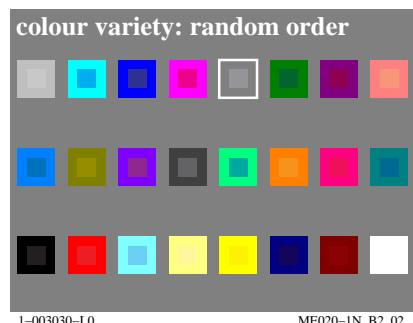


http://130.149.60.45/~farbmetrik/ME02/ME02LONP.PDF /.PS; start output
N: no 3D-linearization (OL) in file (F) or PS-startup (S), page 1/2

see similar files: <http://130.149.60.45/~farbmetrik/ME02/ME02.HTM>
technical information: <http://www.ps.bam.de> or <http://130.149.60.45/~farbmetrik>

TUB registration: 20130201-ME02/ME02LONP.PDF /.PS
application for measurement of display output

TUB material: code=rh4ta



TUB-test chart ME02; Computer graphics and colorimetry
Image series ME02, 3D=0, de=0

input: rgb/cmyk -> rgb/cmyk
output: no change

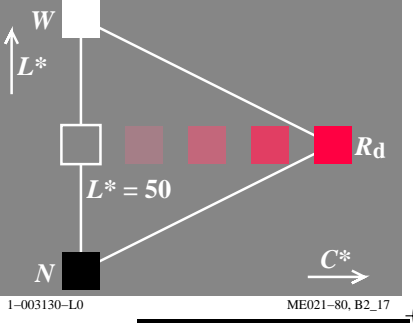
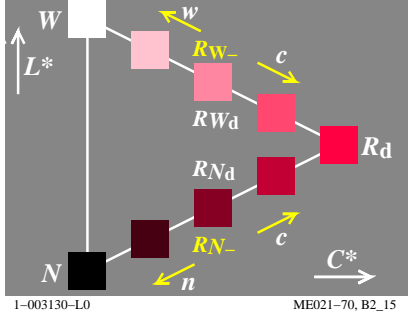
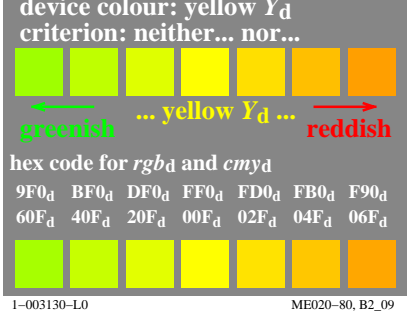
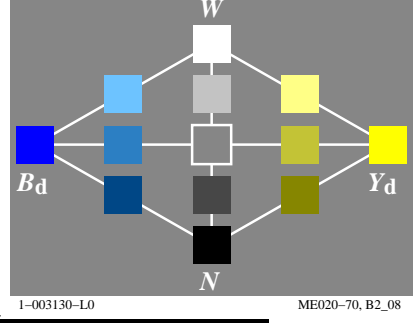
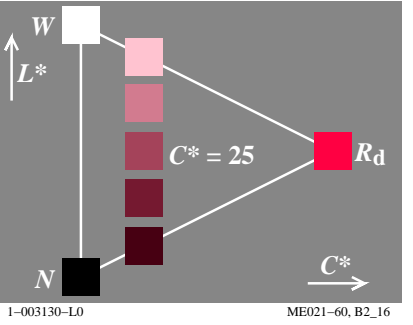
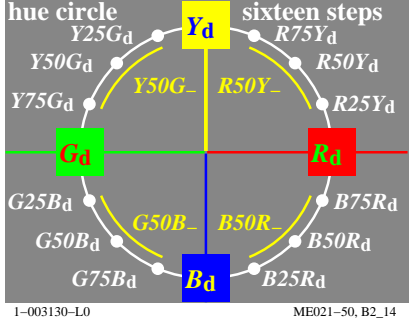
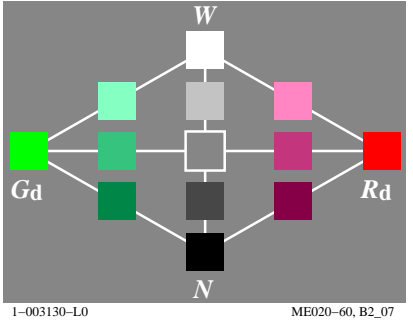
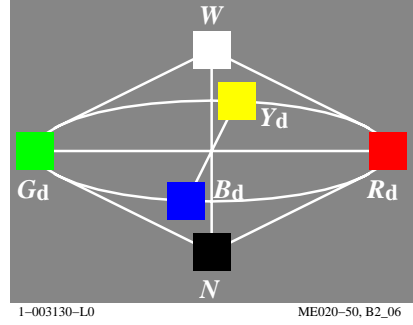
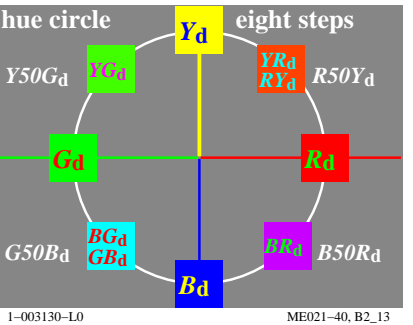
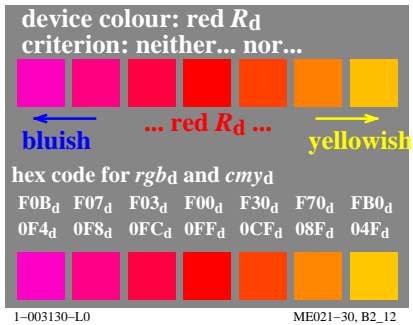
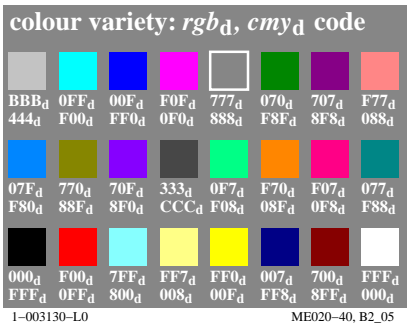
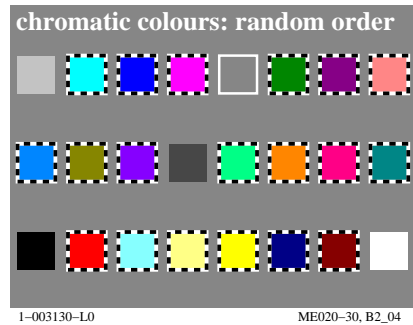
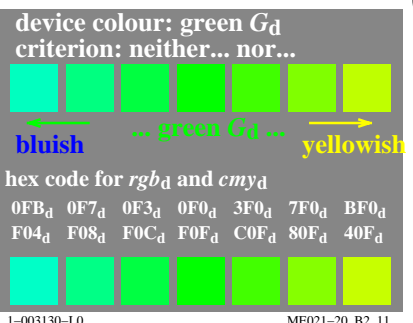
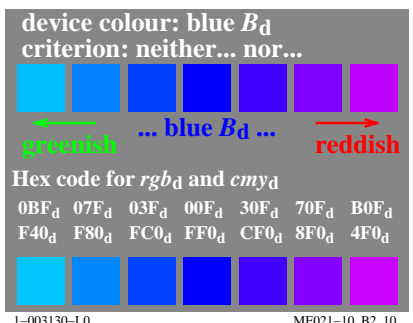
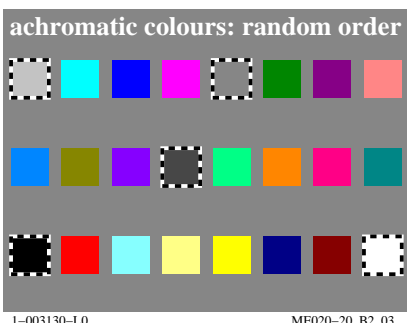
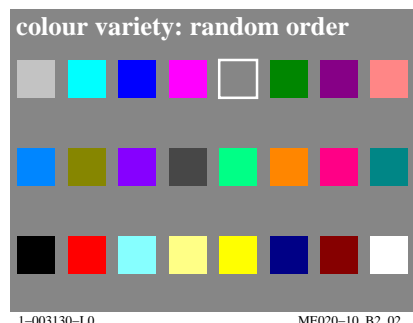


http://130.149.60.45/~farbmetrik/ME02/ME02LONP.PDF /.PS; transfer output
N: no 3D-linearization (OL) in file (F) or PS-startup (S), page 2/2

see similar files: <http://130.149.60.45/~farbmetrik/ME02/ME02LONP.PDF> / .PS
technical information: <http://www.ps.bam.de> or <http://130.149.60.45/~farbmetrik>

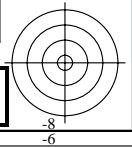
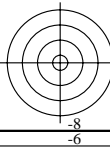
TUB registration: 20130201-ME02/ME02LONP.PDF /.PS
application for measurement of display output, no separation

TUB material: code=rh4ta



TUB-test chart ME02; Computer graphics and colorimetry
Image series ME02, 3D=0, de=0, sRGB

input: $rgb/cmyk \rightarrow rgb_d$
output: transfer to rgb_d

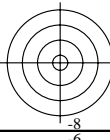
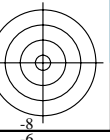
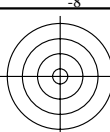


http://130.149.60.45/~farbmetrik/ME02/ME02LONP.PDF /.PS; start output
N: no 3D-linearization (OL) in file (F) or PS-startup (S), page 1/2

see similar files: <http://130.149.60.45/~farbmetrik/ME02/ME02.HTM>
technical information: <http://www.ps.bam.de> or <http://130.149.60.45/~farbmetrik>

TUB registration: 20130201-ME02/ME02LONP.PDF /.PS
application for measurement of display output

TUB material: code=rh4ta



colour variety: random order

1-013030-L0 ME020-1N, B2_02

achromatic colours: random order

1-013030-L0 ME020-2N, B2_03

elementary colour: blue B₋
criterion: neither... nor...

1-013030-L0 ME021-1N, B2_10

elementary colour: green G₋
criterion: neither... nor...

1-013030-L0 ME021-2N, B2_11

chromatic colours: random order

1-013030-L0 ME020-3N, B2_04

colour variety: rgb₋, cmy₋ code

1-013030-L0 ME020-4N, B2_05

elementary colour: red R₋
criterion: neither... nor...

1-013030-L0 ME021-3N, B2_12

hue circle eight steps

1-013030-L0 ME021-4N, B2_13

W, Y₋, B₋, R₋, G₋, N

1-013030-L0 ME020-5N, B2_06

W, Y₋, B₋, R₋, G₋, N

1-013030-L0 ME020-6N, B2_07

hue circle sixteen steps

1-013030-L0 ME021-5N, B2_14

W, C* = 25, R₋, N

1-013030-L0 ME021-6N, B2_16

W, Y₋, B₋, R₋, G₋, N

1-013030-L0 ME020-7N, B2_08

elementary colour: yellow Y₋
criterion: neither... nor...

1-013030-L0 ME020-8N, B2_09

W, R₋, N, C*

1-013030-L0 ME021-7N, B2_15

W, L* = 50, R₋, N, C*

1-013030-L0 ME021-8N, B2_17

TUB-test chart ME02; Computer graphics and colorimetry
Image series ME02, 3D=0, de=1

input: rgb/cmyk -> rgb/cmyk
output: no change

see similar files: <http://130.149.60.45/~farbmetrik/ME02/ME02LONP.PDF> / .PS
technical information: <http://www.ps.bam.de> or <http://130.149.60.45/~farbmetrik>

TUB registration: 20130201-ME02/ME02LONP.PDF /.PS
application for measurement of display output, no separation

TUB material: code=rh4ta

