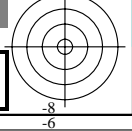
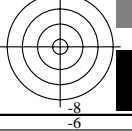
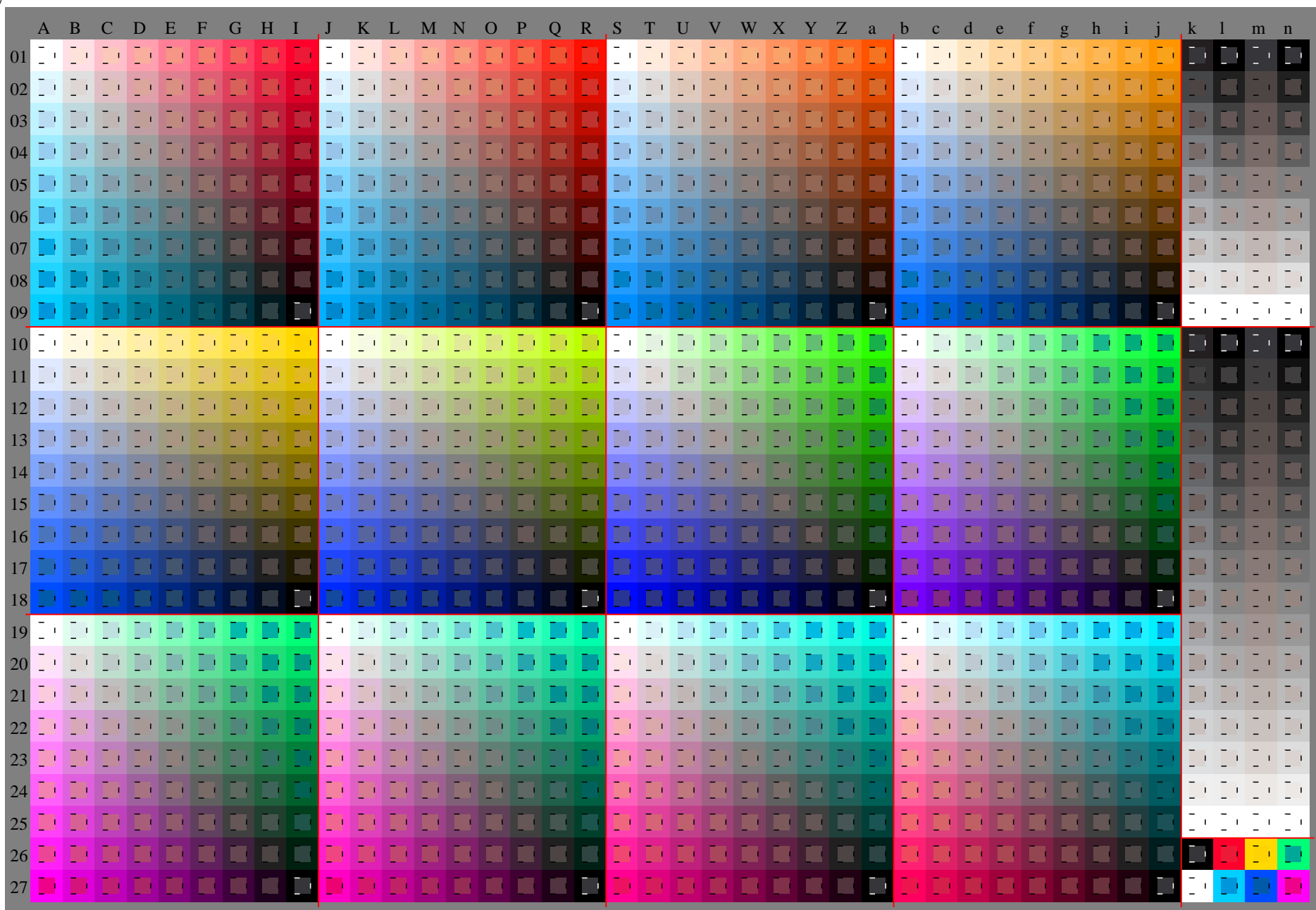
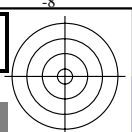
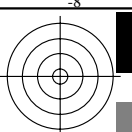


See original or copy: <http://web.me.com/klaus.richter/JE19/JE19L0NA.TXT /.PS>  
Technical information: <http://www.ps.bam.de> V 2.1, io=1,1, Cx=0; cfl=1.00; nt=0,18; nx=1.0

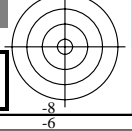
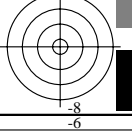
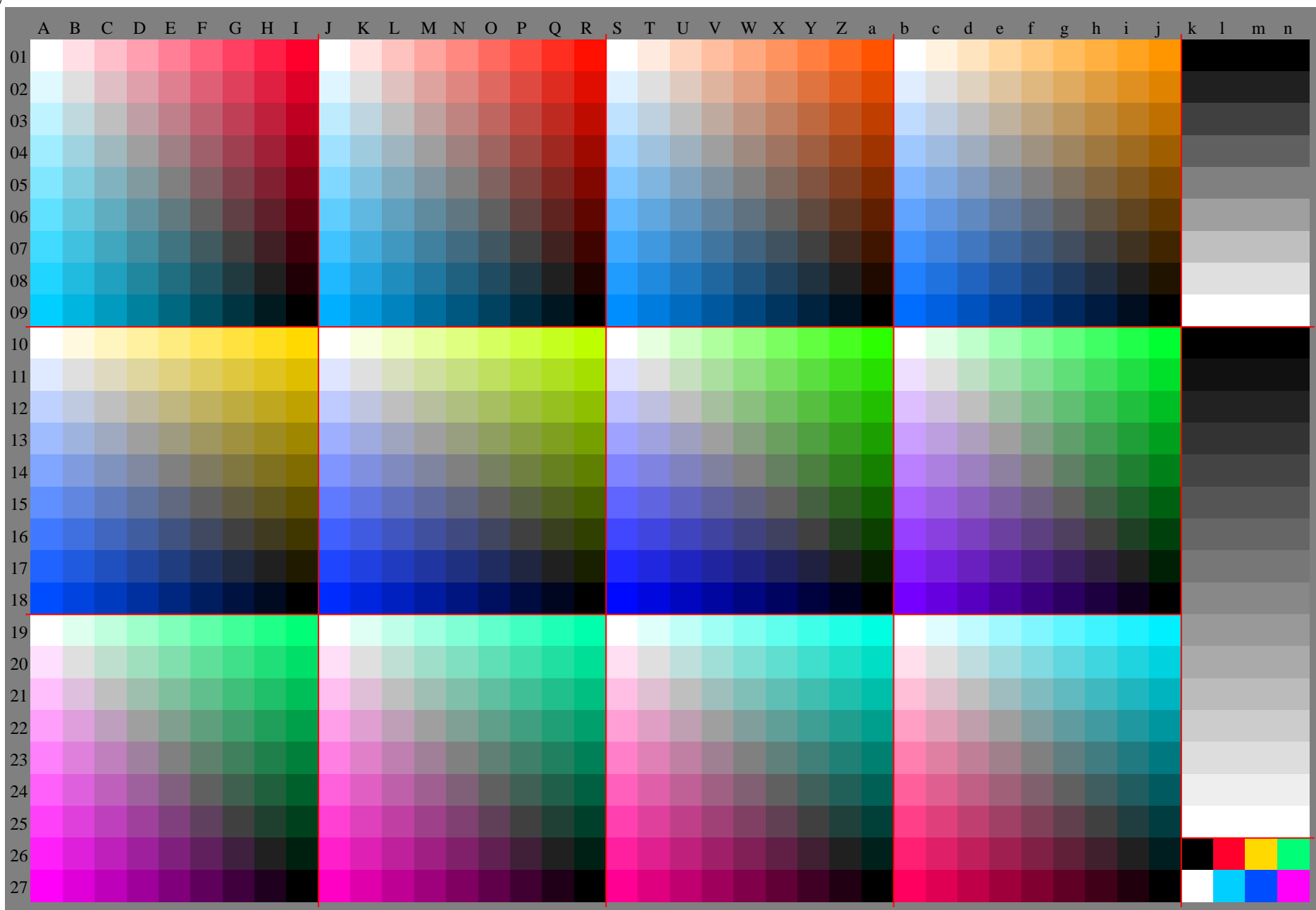
TUB registration: 20100101-JE19/JE19L0NA.TXT /.PS  
application for evaluation and measurement of printer or monitor systems  
TUB material: code=rh4ta

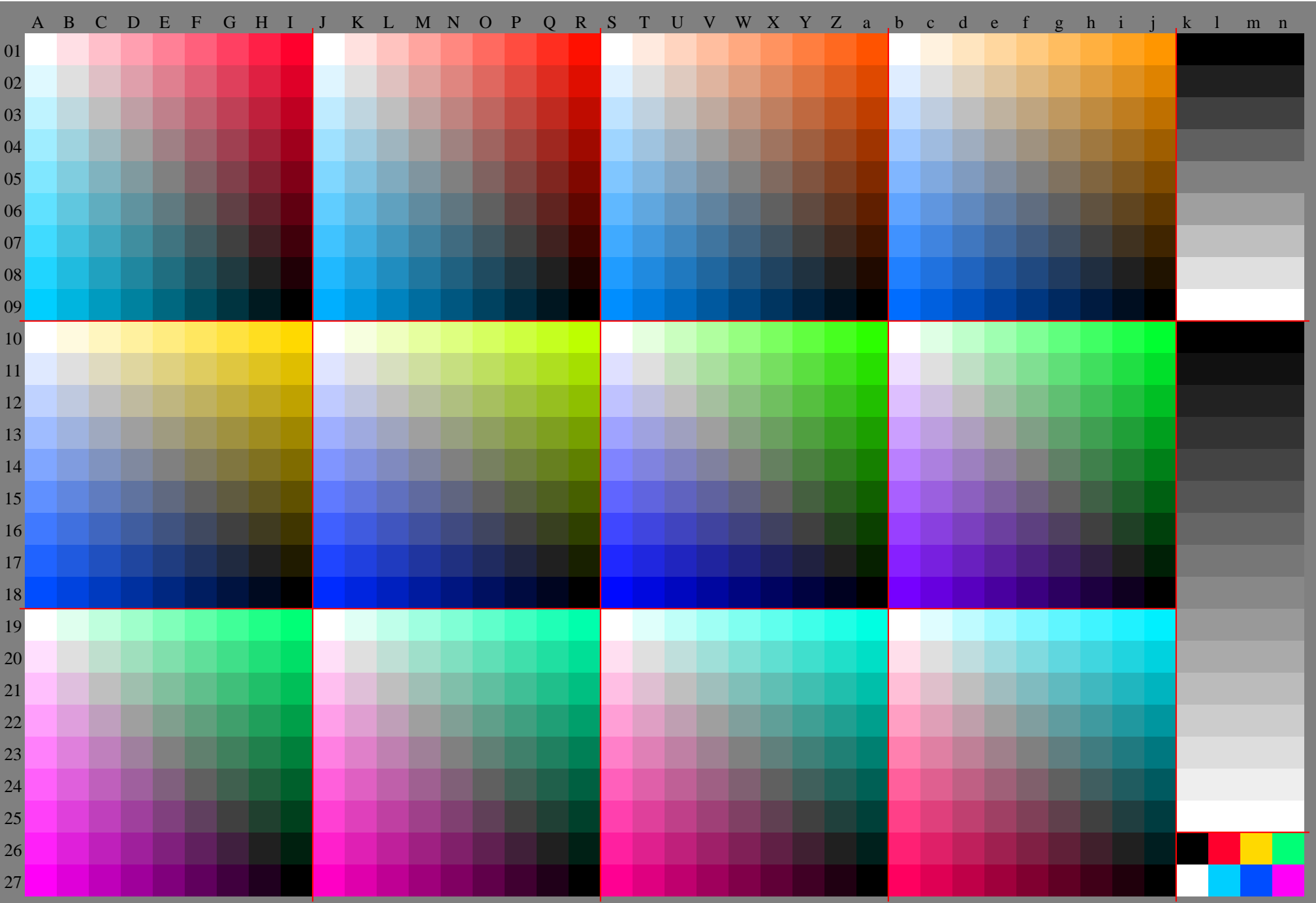


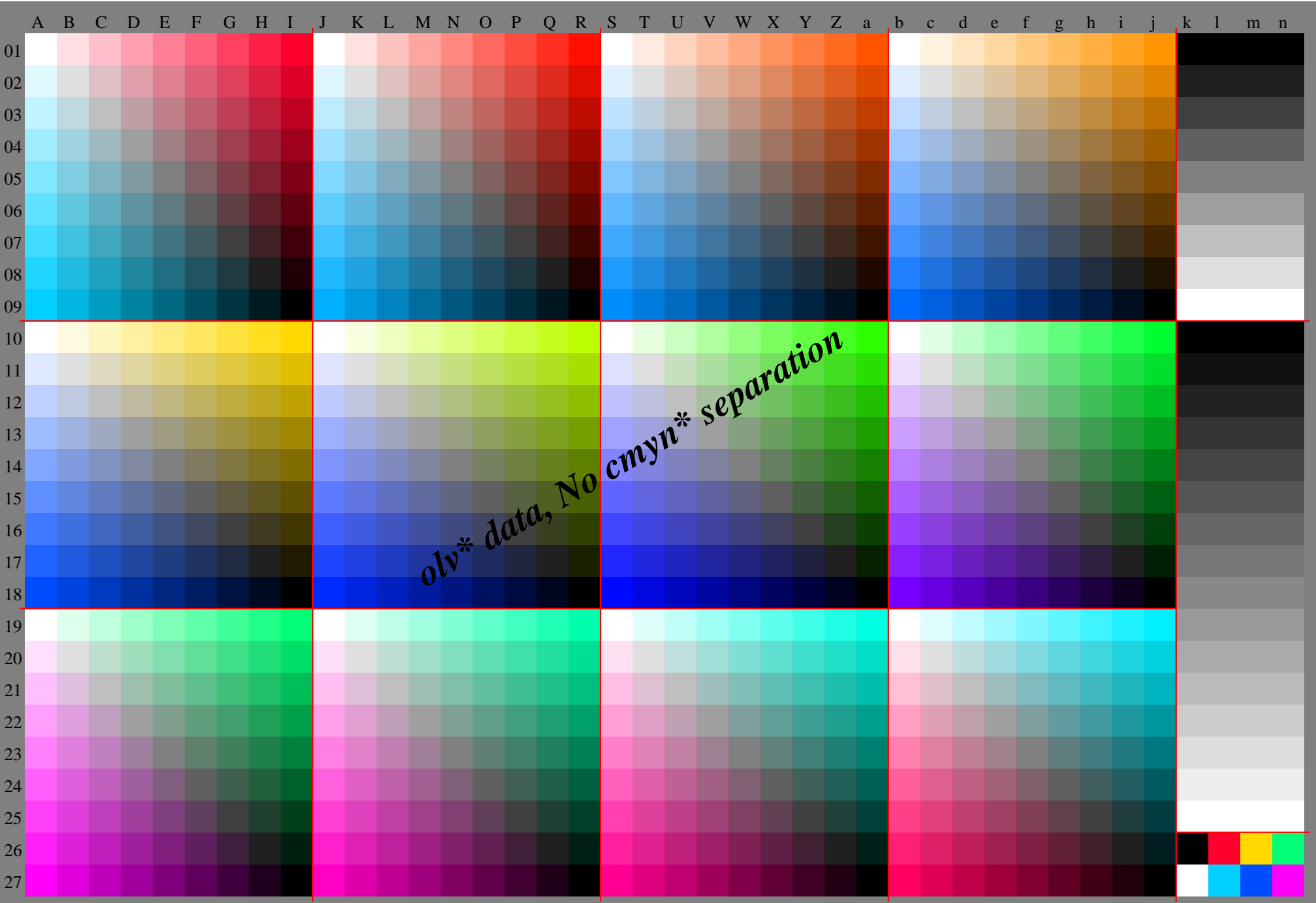


See original or copy: <http://web.me.com/klaus-richter/IE19/IE19L0NA.TXT /.PS>  
Technical information: <http://www.ps.bam.de> V 2.1, io=1,1, Cx=0; cfl=1.00; nt=0,18; nx=1.0

TUB registration: 20100101-IE19/IE19L0NA.TXT /.PS  
application for evaluation and measurement of printer or monitor systems  
TUB material: code=rh4ta

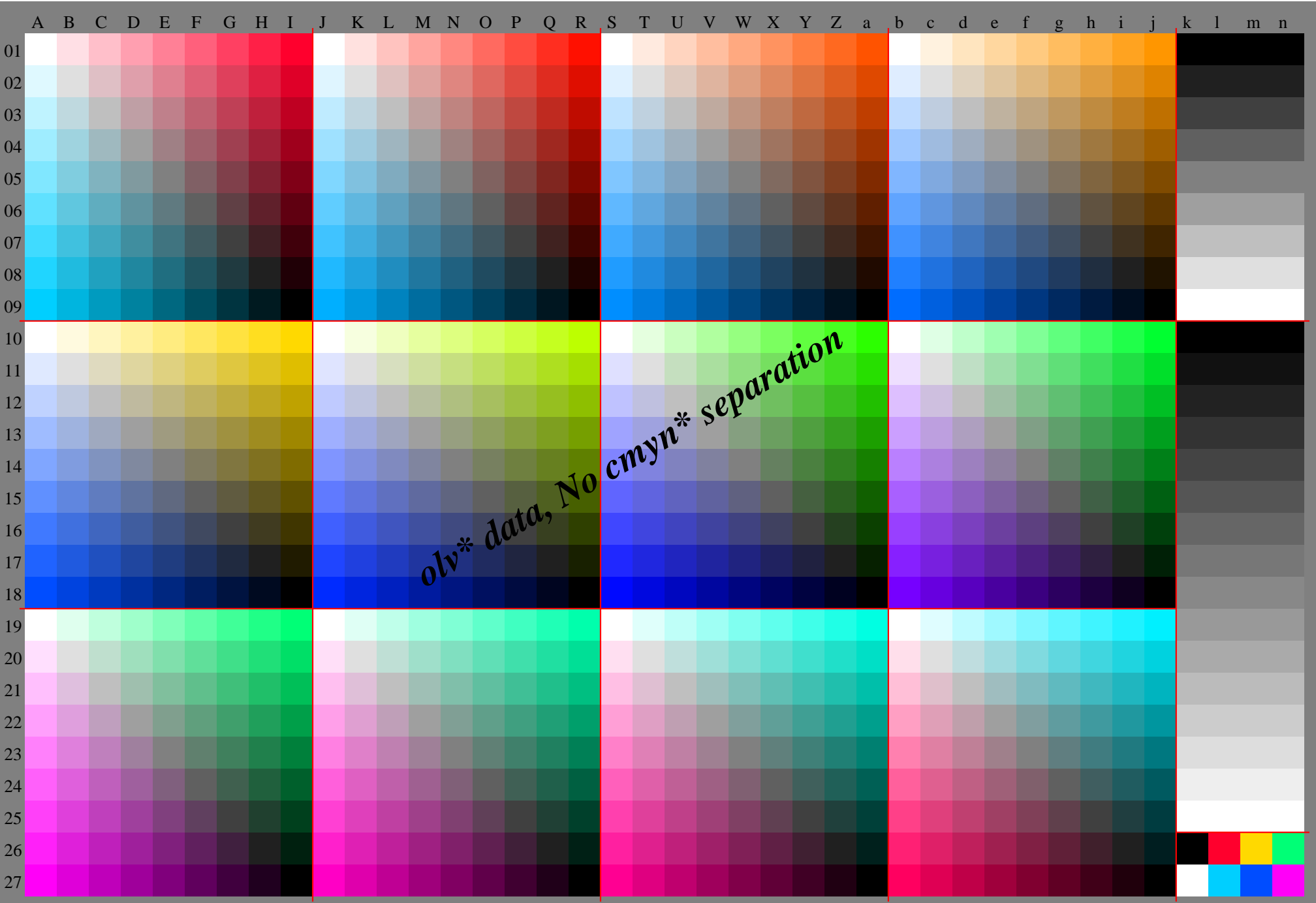




























A B C D E F G H I J K L M N O P Q R S T U V W X Y Z a b c d e f g h i j k lab\*rgb\*\*

Table with 28 rows (01-27) and 28 columns (A-Z plus lab\*rgb\*\*). Each cell contains numerical data. The 'lab\*rgb\*\*' column contains color space values.





Table with 30 columns and 100 rows of numerical data. Each row contains 30 integers, with values ranging from 0 to 255. The data is organized into a 10x3 grid of 30 columns.









Table with columns labeled %LAB\*a, ICC and %XYZa, ICC, and rows of numerical data. The table is split into two main vertical sections. The top section contains a large grid of numbers, with a final row of summary statistics: O:41.9 23.1 3.6 Y:77.4 93.3 10.5 L:37.6 72.9 9.8 C:55.1 79.5 107.9 V:20.1 9.4 101.4 M:59.5 29.7 101.9 N:2.6 2.7 3.0 W:95.1 100.0 108.9.















Table with 9 columns and 255 rows of numerical data. Each row contains 9 numbers, mostly ranging from 0 to 255, with some values exceeding 255 (e.g., 1109, 1270, 1504, 1700, 1990, 2220, 2550, 2800, 3100, 3400, 3700, 4000, 4300, 4600, 4900, 5200, 5500, 5800, 6100, 6400, 6700, 7000, 7300, 7600, 7900, 8200, 8500, 8800, 9100, 9400, 9700, 10000).

