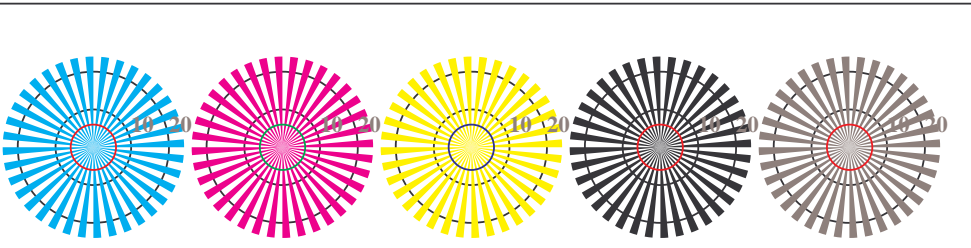




IE800-3, Picture B1: Flower motif, 14 CIE-test colours, 16 grey steps (sf); PS operators *settransfer*, 4 *colorimage*



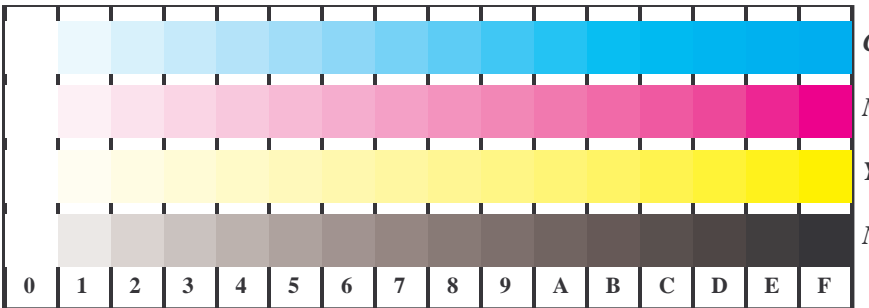
Radial grating W-C   Radial grating W-M   Radial grating W-Y   Radial grating W-N   Radial grating W-Z

IE800-5, Picture B2: Radial gratings W-C, W-M, W-Y, W-N, W-Z; PS operator *olv\* setrgbcolor*



IE800-7, Picture B3: 14 CIE-test colours and 2 + 16 grey steps; Use of PS operator *olv\* setrgbcolor*

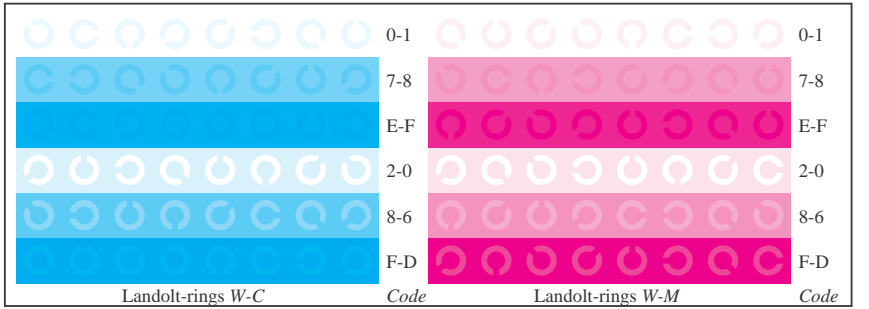
IE80; Test chart of ISO/IEC 15775 and ISO/IEC TR 24705  
 Fig. B1 to B7 similar ISO/IEC-test chart 2, *olv\** interpretation



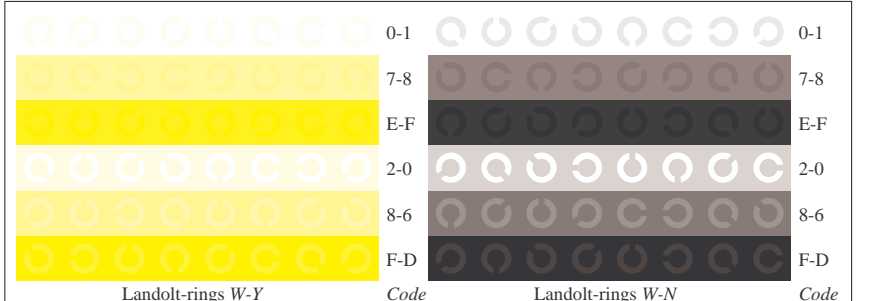
IE801-1, Picture B4: 16 equidistant steps W-C, W-M, W-Y, W-N; PS operator *olv\* setrgbcolor*



IE801-3, Picture B5: Script and Landolt-rings N, C, M, Y, Z; PS operator *olv\* setrgbcolor*



IE801-5, Picture B6: Landolt-rings W-C, W-M; PS operator *olv\* setrgbcolor*



IE801-7, Picture B7: Landolt-rings W-Y, W-N; PS operator *olv\* setrgbcolor*

input: *rgb*->*olv\* setrgbcolor*  
 output: *olv\**->*cmy0\* setcmyk*

See original or copy: [http://web.me.com/klaus\\_richter/IE80/IE80LONA.PS /.TXT](http://web.me.com/klaus_richter/IE80/IE80LONA.PS /.TXT)  
 Technical information: <http://www.ps.bam.de> or <http://130.149.60.45/~farbmetrik>

TUB registration: 20090901-IE80/IE80LONA.PS /.TXT  
 application for measurement of printer or monitor systems

TUB material: code=rh4ta