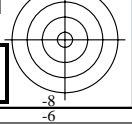
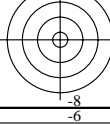
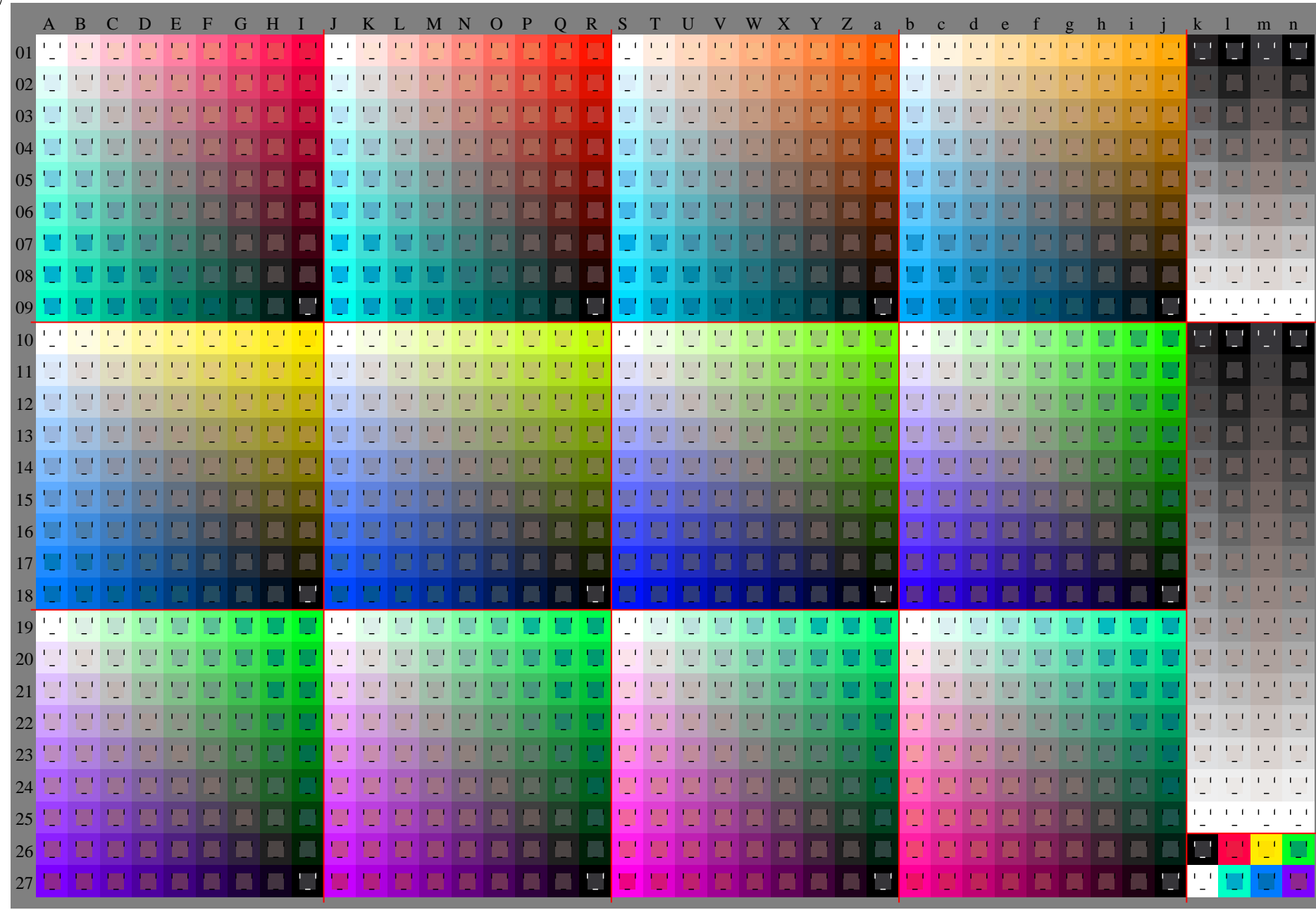
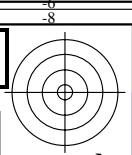
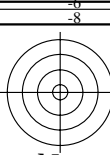


Siehe Original/Kopie: <http://web.me.com/klaus.richter/HG06/HG06P0NA.TXT/.PS>
Technische Information: http://www.ps.bam.de/V_2.1,io=1.1,Cx=1; cfl=1.00; nt=0.01; nx=1.3

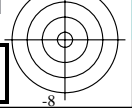
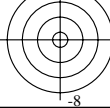
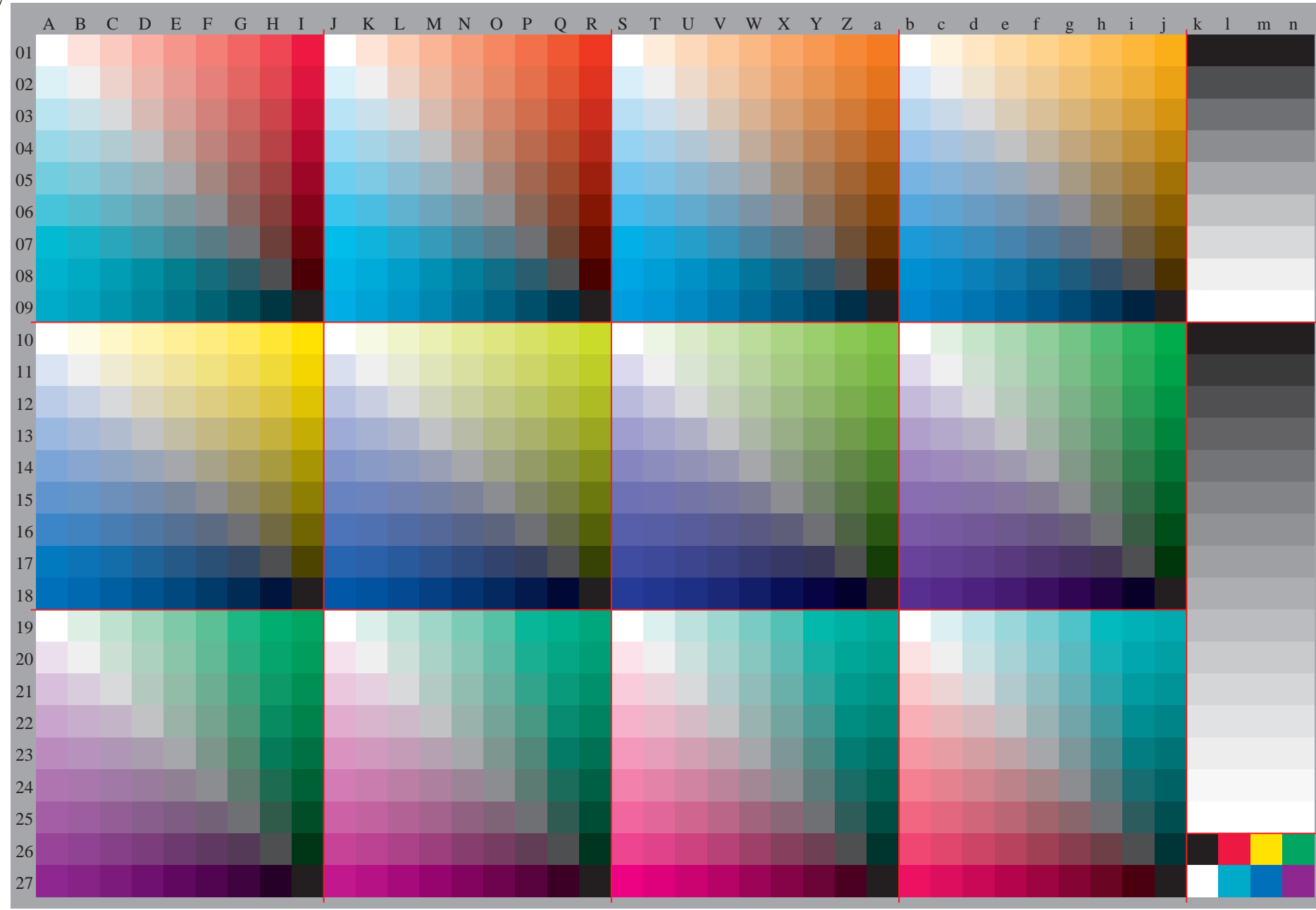
TUB-Registrierung: 20091101-HG06/HG06P0NA.TXT/ .PS TUB-Material: Code=rh4ta
Anwendung für Beurteilung und Messung von Drucker- oder Monitorsystemen

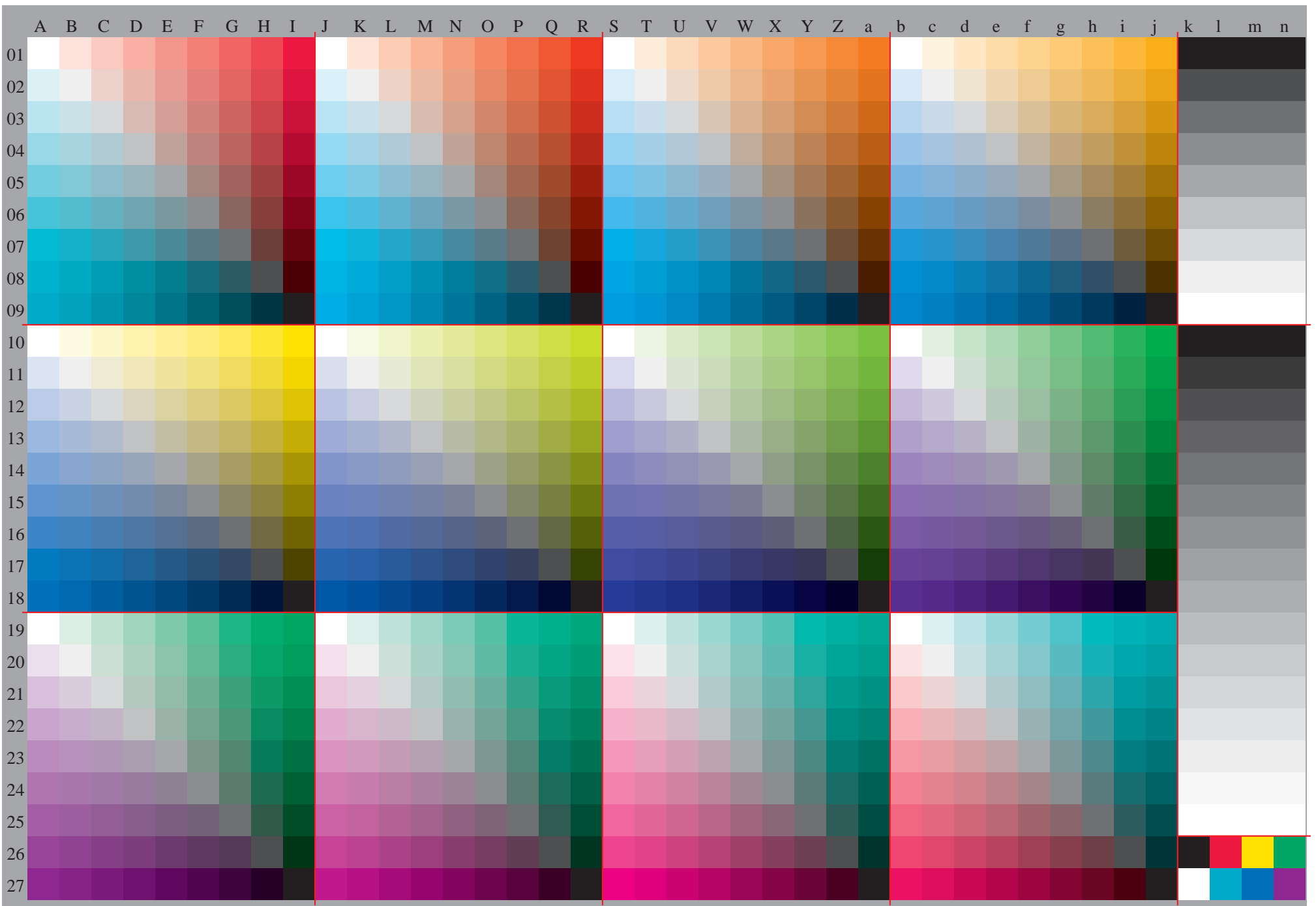


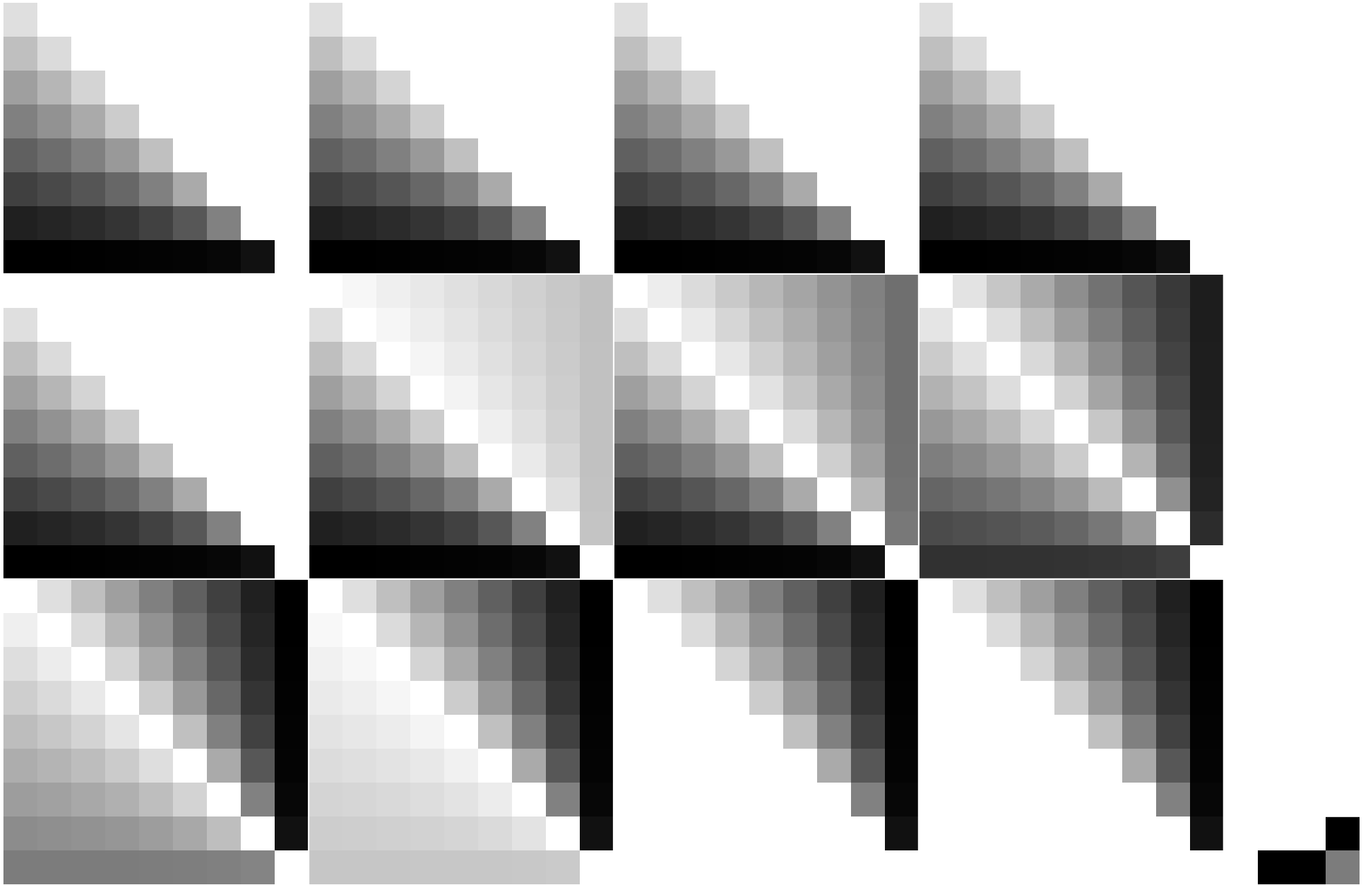


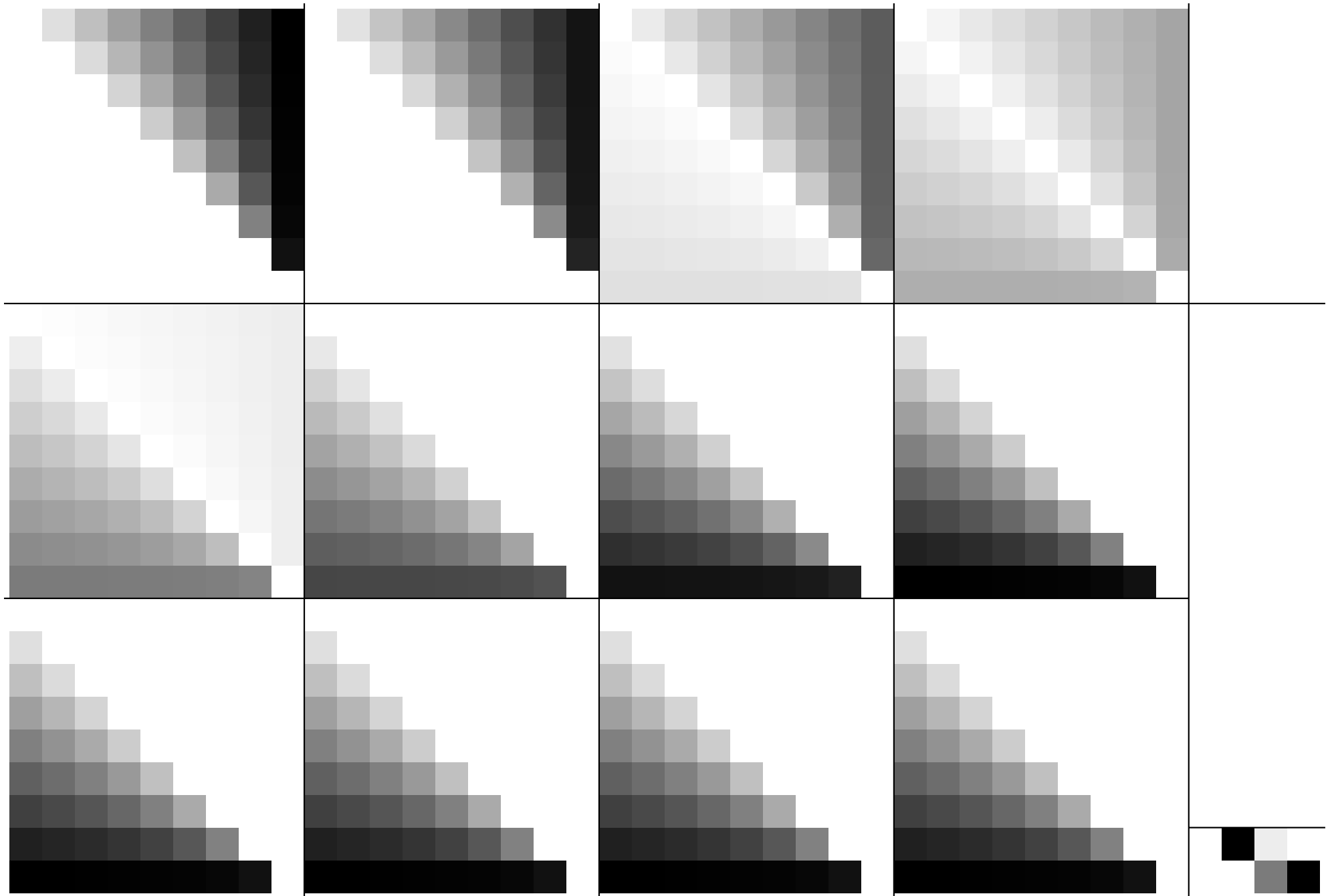
Siehe Original/Kopie: <http://web.me.com/klaus.richter/HG06/HG06P0NA.TXT/.PS>
Technische Information: http://www.ps.bam.de/V_2.1,io=1,1,Cx=1; cfl=1.00; nt=0,01; nx=1.3

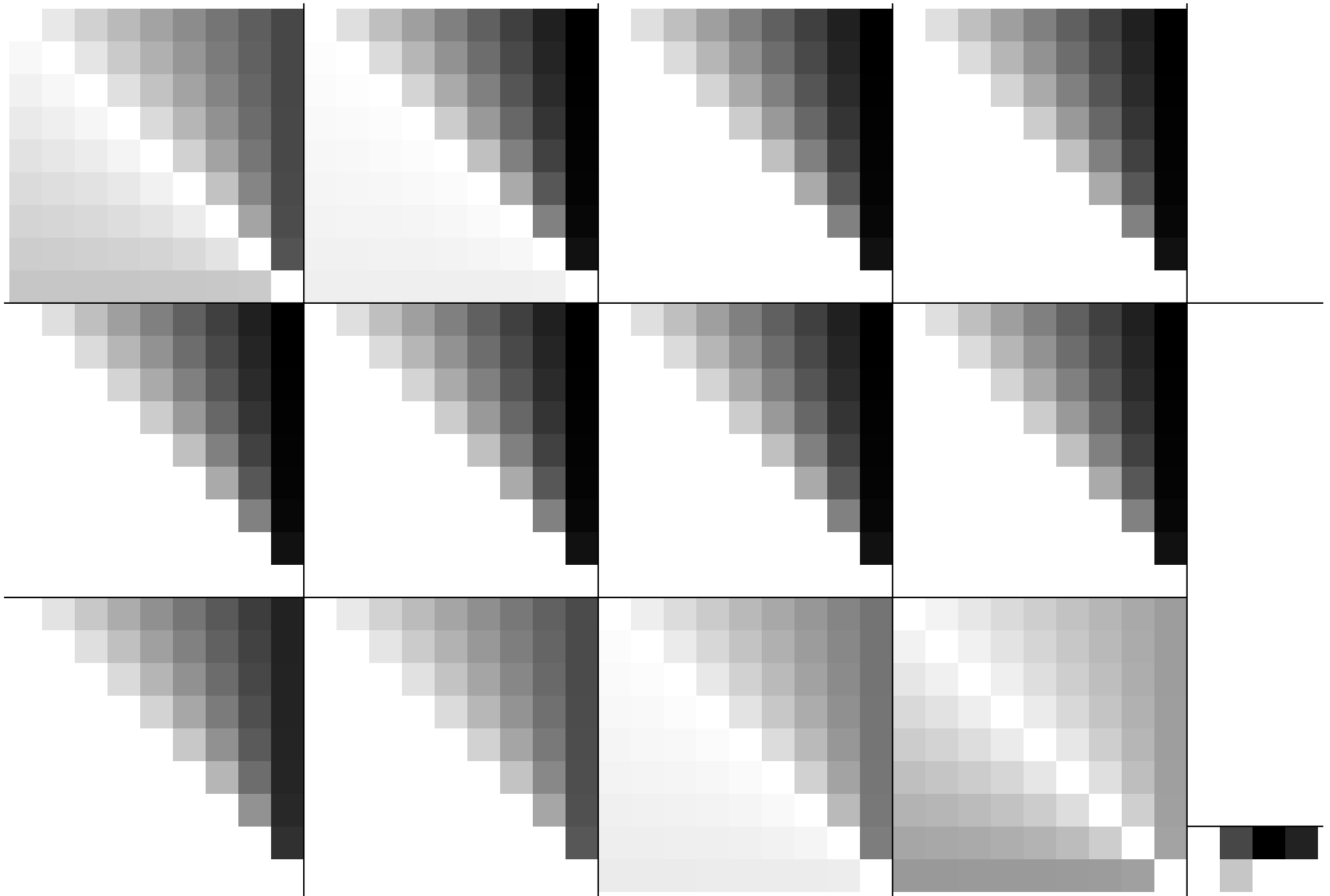
TUB-Registrierung: 20091101-HG06/HG06P0NA.TXT/ .PS TUB-Material: Code=rh4ta
Anwendung für Beurteilung und Messung von Drucker- oder Monitorsystemen











A B C D E F G H I J K L M N O P Q R S T U V W X Y Z a b c d e f g h i j k l m n

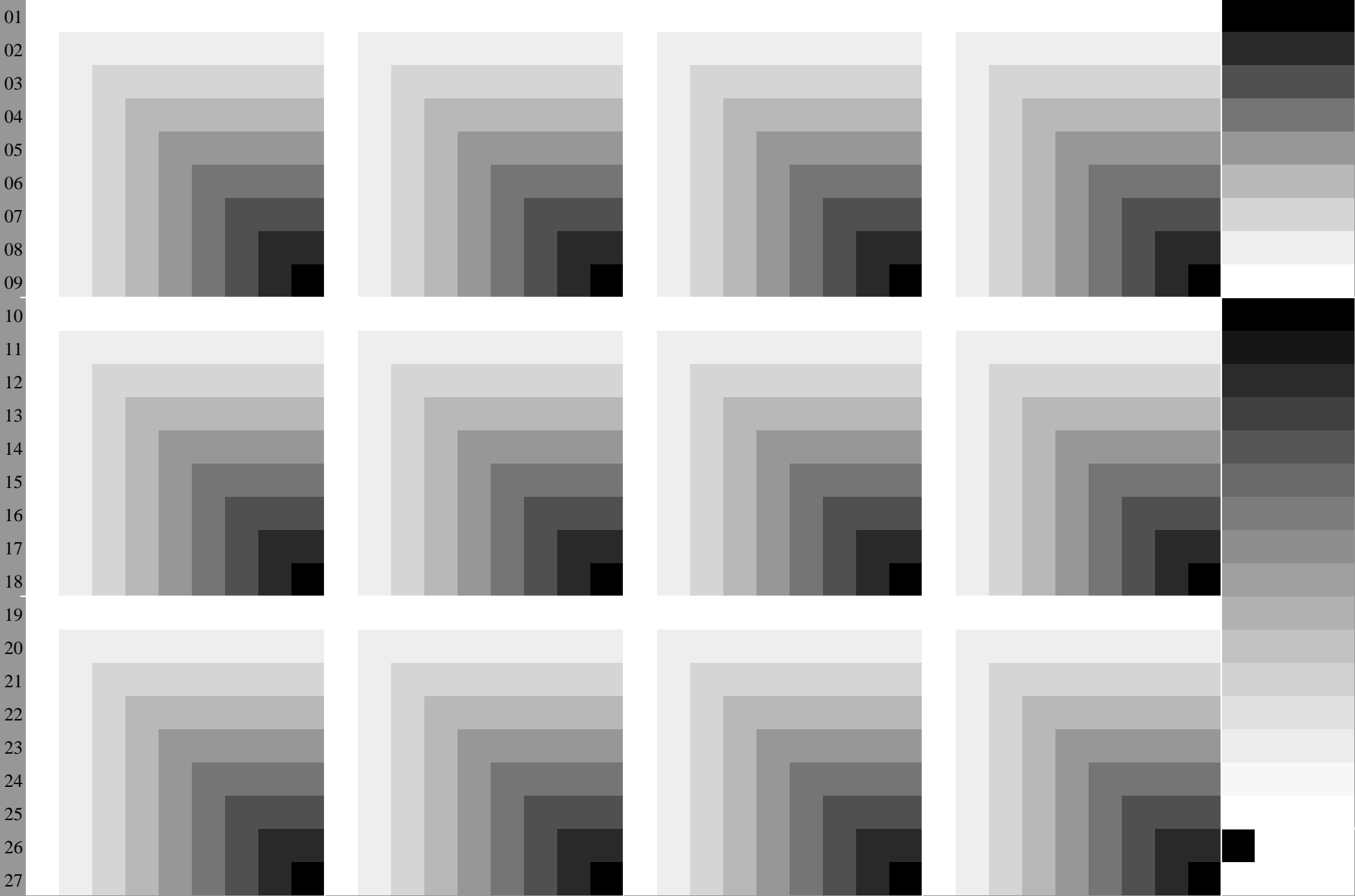


Table with 28 columns (A-Z, a-z) and 28 rows (01-28). Each cell contains numerical values. The table includes a header row labeled 'lab*oly*' and a footer row labeled 'http://xxx/HG06/HG06P0NA.TXT/ .PS, Seite 8/30; ORS18_95, L*=-18_95; cf1=1.00; nt=-0.01; nx=1.3'.

Table with columns A-Za-z and rows 01-27. Each cell contains a sequence of numbers and letters, likely representing a data matrix or a specific encoding scheme.

Table with 27 columns and 100 rows of numerical data. Each row contains 27 values, mostly ranging from 0 to 255. The data is organized in a grid-like structure with some repeating patterns.

%LAB*a,CIE O:47.9 65.4 50.5 Y:90.4 -10.3 91.8 L:50.9 -62.8 35.0 C:58.6 -30.3 -45.0 V:25.7 31.1 -44.4 M:48.1 75.3 -8.4 N:18.0 0.0 0.0 W:95.4 0.0 0.0

Table with 18 columns of numerical data. Each row contains 18 values, representing color data points in various color spaces (LAB, XYZ, etc.). The values are organized into vertical columns, with each column having a label at the top (e.g., %LAB*a,CIE, O:47.9, etc.) and a corresponding label at the bottom.

%LAB*a,ICC O:50.6 68.1 52.6 Y:94.8 -10.7 95.5 L:53.7 -65.4 36.4 C:61.7 -31.6 -46.9 V:27.4 32.4 -46.2 M:50.8 78.4 -8.7 N:19.4 0.0 0.0 W:100.0 0.0 0.0

Table with 19 columns and 100 rows of numerical data. The columns are labeled with letters and numbers (e.g., O, Y, L, C, V, M, N, W) and the rows contain values for each of these categories. The data is organized into a grid format with vertical lines separating the columns.

%XYZa,ICC O:34.0 18.9 3.3 Y:77.3 87.0 11.8 L:9.8 21.7 8.0 C:21.2 30.0 80.5 V:8.1 5.3 24.2 M:37.3 19.1 25.8 N:2.7 2.8 3.1 W:95.1 100.0 108.9

% cmyn'*_8bit, 9x9x9 grid									
0	0	0	0	0	0	0	0	0	0
32	0	7	0	32	17	0	0	0	16
64	0	14	0	64	33	0	0	0	33
96	0	21	0	96	50	0	0	0	49
128	0	29	0	128	66	0	0	0	66
159	0	36	0	159	83	0	0	0	82
191	0	43	0	191	99	0	0	0	98
223	0	50	0	223	116	0	0	0	115
255	0	57	0	255	132	0	0	0	131
0	0	32	23	0	2	32	0	0	32
0	0	0	17	0	0	0	17	0	0
36	0	8	17	36	19	0	17	19	36
73	0	16	17	73	38	0	17	37	73
109	0	24	17	109	57	0	17	56	109
146	0	33	17	146	75	0	17	75	146
182	0	41	17	182	94	0	17	94	182
218	0	49	17	218	113	0	17	112	218
255	0	57	17	255	132	0	17	131	255
0	0	64	46	0	4	64	0	64	0
0	0	36	26	17	0	3	36	17	0
0	0	0	42	0	0	0	42	0	0
42	0	10	42	42	22	0	42	22	42
85	0	19	42	85	44	0	42	44	85
127	0	28	42	127	66	0	42	66	127
170	0	38	42	170	88	0	42	87	170
212	0	47	42	212	110	0	42	109	212
254	0	57	42	254	132	0	42	131	254
0	0	96	69	0	7	96	0	96	0
0	0	73	53	17	0	5	73	17	0
0	0	42	31	42	0	3	42	42	0
0	0	0	71	0	0	0	71	0	0
51	0	11	71	51	26	0	71	26	51
102	0	23	71	102	53	0	71	52	102
152	0	34	71	152	79	0	71	78	152
203	0	45	71	203	105	0	71	105	203
253	0	57	71	253	131	0	71	131	253
0	0	128	92	0	9	128	0	128	0
0	0	109	79	17	0	8	109	17	0
0	0	85	61	42	0	6	85	42	0
0	0	51	37	71	0	4	51	71	0
0	0	0	104	0	0	0	104	0	0
64	0	14	104	64	33	0	104	33	64
127	0	28	104	127	66	0	104	66	127
190	0	42	104	190	98	0	104	98	190
253	0	56	104	253	131	0	104	130	253
0	0	159	115	0	11	159	0	159	0
0	0	146	105	17	0	10	146	17	0
0	0	127	92	42	0	9	127	42	0
0	0	102	74	71	0	7	102	71	0
0	0	64	46	104	0	4	64	104	0
0	0	0	138	0	0	0	138	0	0
85	0	19	138	85	44	0	138	44	85
168	0	38	138	168	87	0	138	87	168
251	0	56	138	251	130	0	138	129	251
0	0	191	138	0	13	191	0	191	0
0	0	182	131	17	0	13	182	17	0
0	0	170	123	42	0	12	170	42	0
0	0	152	110	71	0	11	152	71	0
0	0	127	92	104	0	9	127	104	0
0	0	85	61	138	0	6	85	138	0
0	0	0	175	0	0	0	175	0	0
126	0	28	175	126	65	0	175	65	126
248	0	55	175	248	128	0	175	128	248
0	0	223	161	0	15	223	0	223	0
0	0	218	158	17	0	15	218	17	0
0	0	212	153	42	0	15	212	42	0
0	0	203	147	71	0	14	203	71	0
0	0	190	137	104	0	13	190	104	0
0	0	168	122	138	0	12	168	138	0
0	0	126	91	175	0	9	126	175	0
0	0	0	214	0	0	0	214	0	0
238	0	53	214	238	123	0	214	123	238
0	0	255	184	0	18	255	0	255	0
0	0	255	184	17	0	18	255	17	0
0	0	254	184	42	0	18	254	42	0
0	0	253	183	71	0	18	253	71	0
0	0	253	182	104	0	18	253	104	0
0	0	251	181	138	0	17	251	138	0
0	0	248	179	175	0	17	248	175	0
0	0	238	172	214	0	17	238	214	0
0	0	0	255	0	0	0	255	0	0

