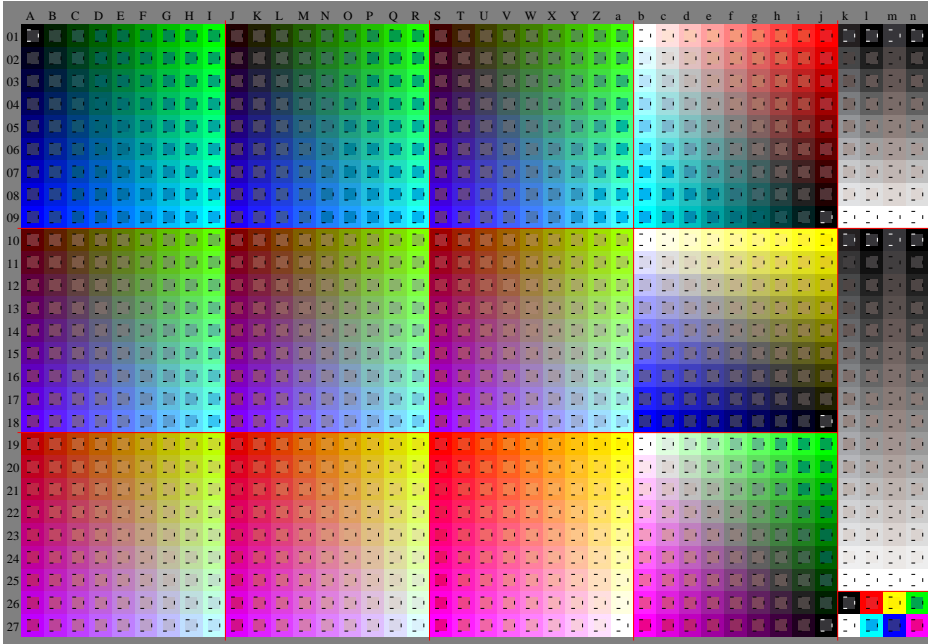


See original or copy: http://web.me.com/klaus_richter/GE66/GE66LONI.TXT /PS
Technical information: <http://www-ps.bam.de> V 2.1, to=1.1, Cx=1, cFl=0.90; nt=0.01; nx=1.3



TUB registration: 20091101-GE66/GE66LONI.TXT /PS
application for evaluation and measurement of printer or monitor systems
TUB material: code=rhatha