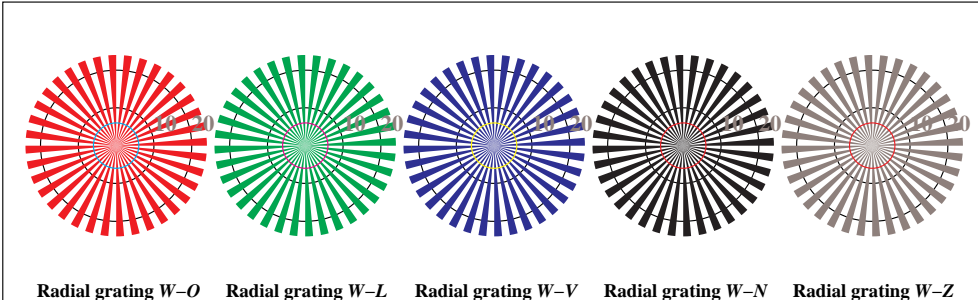


http://farbe.li.tu-berlin.de/FE98/FE98L0NP.PDF /.PS start output
 N: no 3D-linearization (OL) in file (F) or PS-startup (S)



Picture B1: Flower motif, 14 CIE-test colours and 2 + 16 grey steps (nf); PS operators *settransfer*, *4 colorimage*

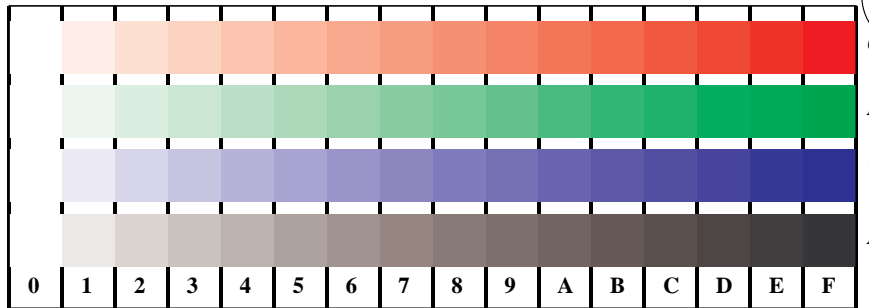


Picture D2: Radial gratings *W-O*, *W-L*, *W-V*, *W-N*, and *W-Z*; PS operator: *cmY0* setcmykcolor (only)*

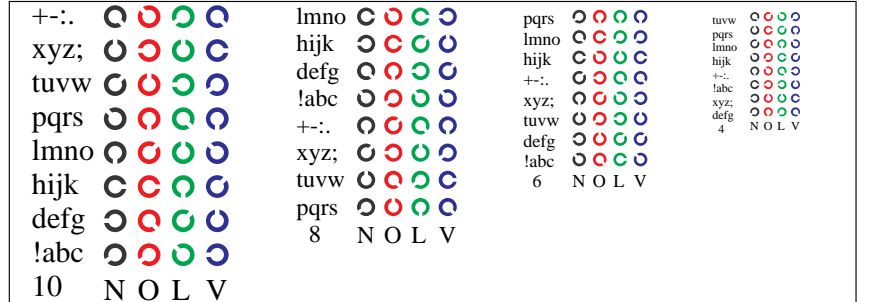


Picture D3: 14 CIE-test colours and 2 + 16 grey steps (sf); PS operator: *cmY0* setcmykcolor (only)*

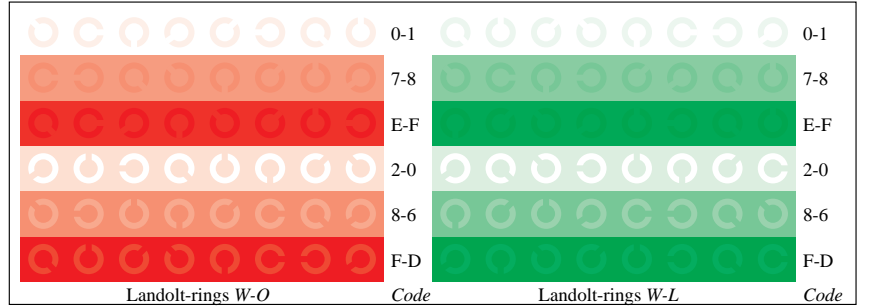
Fig. D1 to D7 of ISO/IEC-test chart 4; ISO/IEC 15775 and ISO/IEC TR 24705;



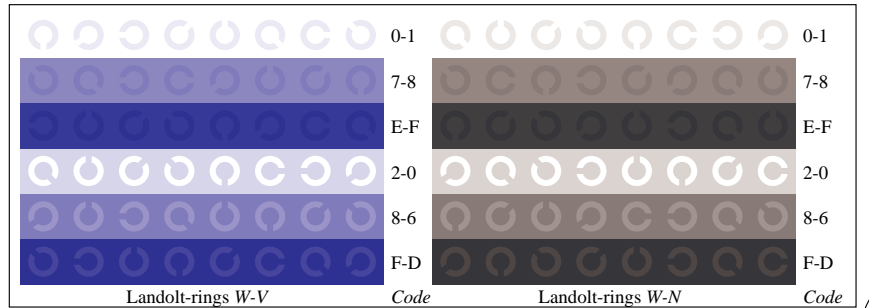
Picture D4: 16 equidistant steps *W-O*, *W-L*, *W-V* and *W-N*; PS operator: *cmY0* setcmykcolor (only)*



Picture D5: Sript and Landolt-rings *N*, *O*, *L* and *V*; PS operator: *cmY0* setcmykcolor (only)*



Picture D6: Landolt-rings *W-O* and *W-L*; PS operator: *cmY0* setcmykcolor (only)*



Picture D7: Landolt-rings *W-V* and *W-N*; PS operator: *cmY0* setcmykcolor (only)*

input: *cmY0* setcmykcolor (only)*
 output: *no change*

BAM Registration: 20031201-FE98/FE98L0NP.PDF /.PS
 application for display output (Yr=2.5) and printer output

TUB material: code=rha4ta

see similar files: http://farbe.li.tu-berlin.de/FE98/FE98L0NP.PDF /.PS
 technical information: http://farbe.li.tu-berlin.de/FE98/FE98L0NP.PDF /.PS
 Version 2.0, io=2,2