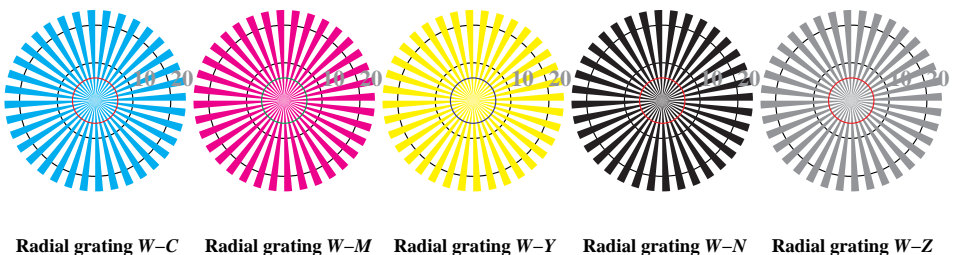


http://farbe.li.tu-berlin.de/FE96/FE96L0NP.PDF /.PS start output  
 N: no 3D-linearization (OL) in file (F) or PS-startup (S)



Picture B1: Flower motif, 14 CIE-test colours and 2 + 16 grey steps (sf); PS operators *settransfer*, *4 colorimage*

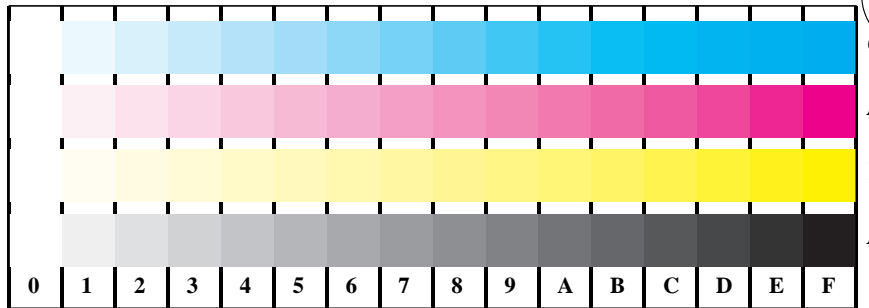


Picture B2: Radial gratings W-C, W-M, W-Y, W-N, and W-Z; PS operator: *cmY0\*/000n\* setcmYcolor*

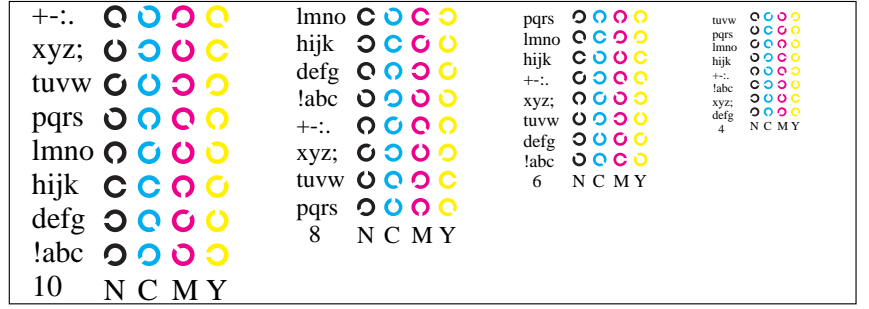


Picture B3: 14 CIE-test colours and 2 + 16 grey steps (sf); PS operator: *cmY0\*/000n\* setcmYcolor*

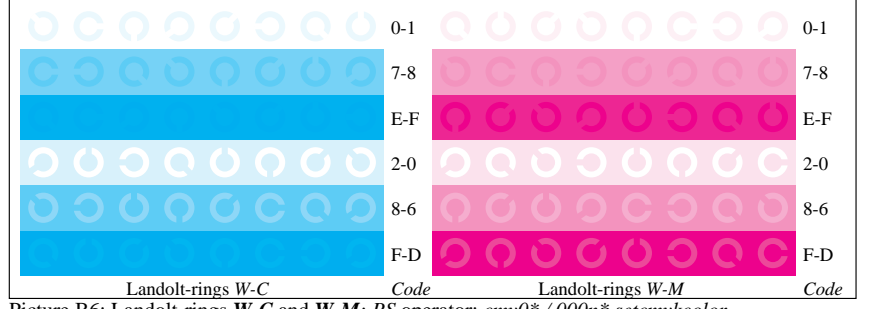
Fig. B1 to B7 of ISO/IEC-test chart 2; ISO/IEC 15775 and ISO/IEC TR 24705;



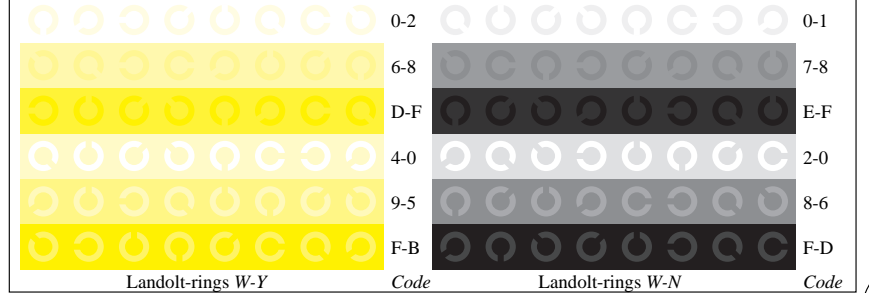
Picture B4: 16 equidistant steps W-C, W-M, W-Y and W-N; PS operator: *cmY0\*/000n\* setcmYcolor*



Picture B5: Sript and Landolt-rings N, C, M and Y; PS operator: *cmY0\*/000n\* setcmYcolor*



Picture B6: Landolt-rings W-C and W-M; PS operator: *cmY0\*/000n\* setcmYcolor*



Picture B7: Landolt-rings W-Y and W-N; PS operator: *cmY0\*/000n\* setcmYcolor*

input: *cmY0\*/000n\* setcmYcolor*  
 output: *no change*

see similar files: http://farbe.li.tu-berlin.de/FE96/FE96L0NP.PDF /.PS  
 technical information: http://farbe.li.tu-berlin.de/FE96/FE96L0NP.PDF /.PS  
 Version 2.0, io=0,0

BAM Registration: 20031201-FE96/FE96L0NP.PDF /.PS  
 application for display output (Yr=2.5) and printer output

TUB material: code=rha4ta