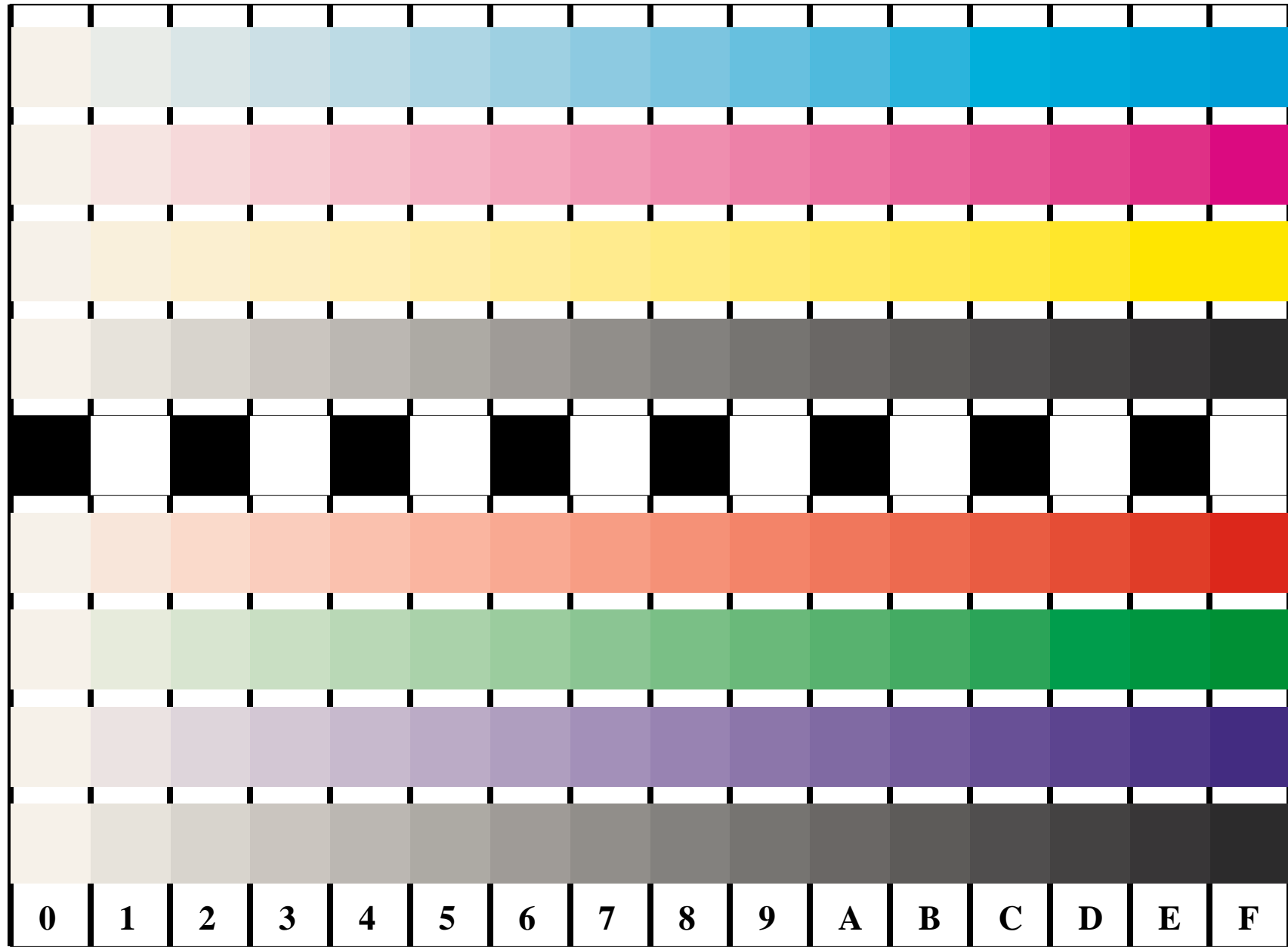


http://farbe.li.tu-berlin.de/FE95/FE95L0NP.PDF /.PS start output
 N: no 3D-linearization (OL) in file (F) or PS-startup (S)

see similar files: <http://farbe.li.tu-berlin.de/FE95/FE95L0NP.PDF> / .PS
<http://farbe.li.tu-berlin.de/FE95/FE95L0NP.PDF> / .PS
 application for display output (Yr=2.5) and printer output

technical information: <http://farbe.li.tu-berlin.de/FE95/FE95L0NP.PDF> / .PS
<http://farbe.li.tu-berlin.de/FE95/FE95L0NP.PDF> / .PS
 application for display output (Yr=2.5) and printer output

Version 2.0, io=5,0



C
*LAB**
M
*LAB**
Y
*LAB**
N
*LAB**
O
*LAB**
L
*LAB**
V
*LAB**
N
*LAB**

Picture B4 and D4: 16 equidistant steps **B4**: W-C, W-M, W-Y and W-N; **D4**: W-O, W-L, W-V and W-N(CMY); PS operators; B4: LAB* setcolor; D4: LAB* setcolor

Fig. B4 of ISO/IEC-test chart 2, and ISO/IEC 15775, and input: LAB* setcolor
 Fig. D4 of ISO/IEC-test chart no. 4; ISO/IEC TR 24705; output: no change

BAM Registration: 20031201-FE95/FE95L0NP.PDF / .PS
 application for display output (Yr=2.5) and printer output

BAM material: code=rha4ta

