

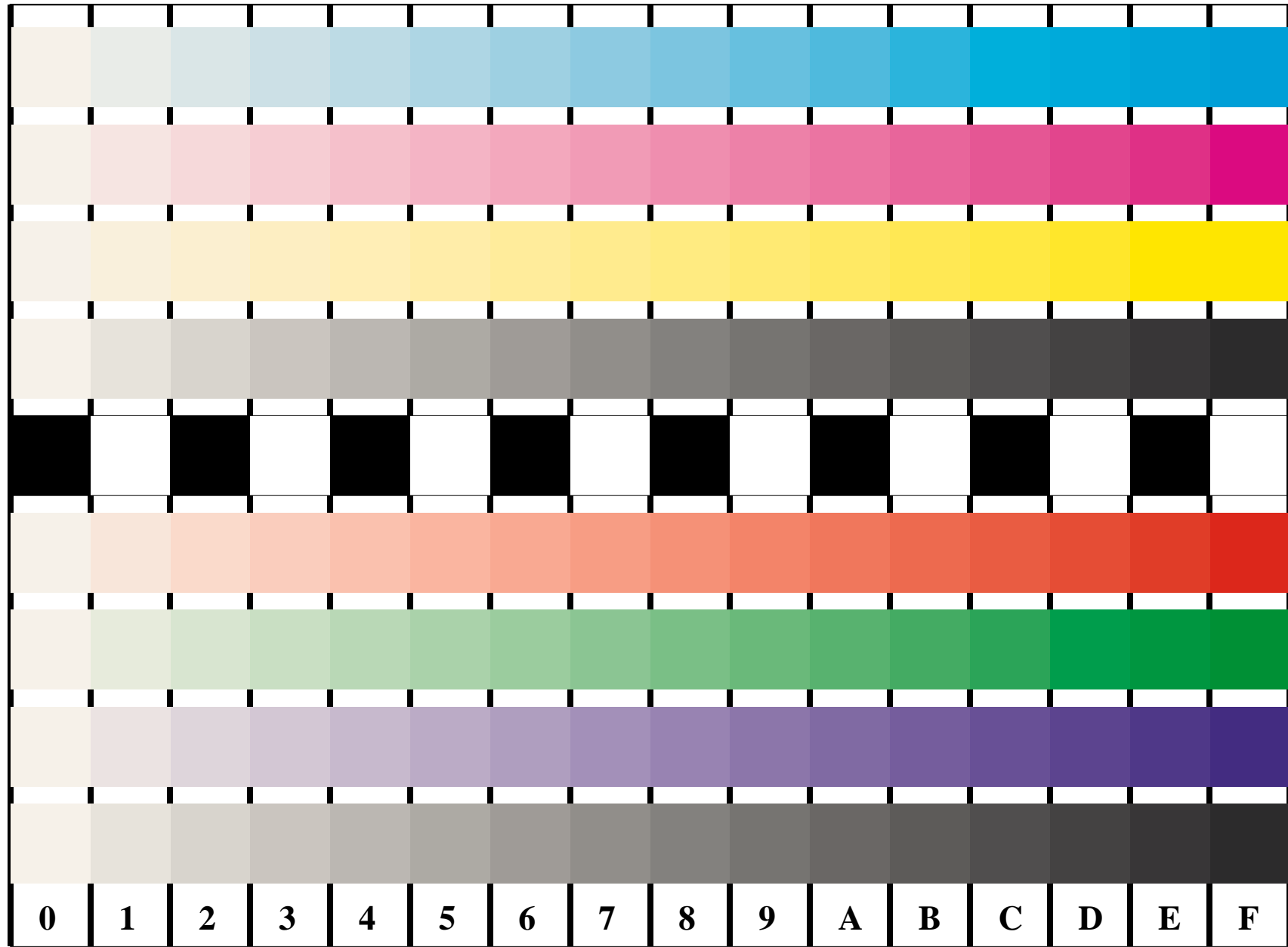
http://farbe.li.tu-berlin.de/FE85/FE85L0NA.PS /.TXT start output
 N: no 3D-linearization (OL) in file (F) or PS-startup (S)

see similar files: <http://farbe.li.tu-berlin.de/FE85/FE85.HTM>
 technical information: <http://farbe.li.tu-berlin.de/>

Version 2.0, io=5,0

BAM Registration: 20031201-FE85/FE85L0NA.PS /.TXT
 application for display output

BAM material: code=rha4ta



Picture B4 and D4: 16 equidistant steps **B4**: W-C, W-M, W-Y and W-N; **D4**: W-O, W-L, W-V and W-N(CMY); PS operators; B4: LAB* setcolor; D4: LAB* setcolor

Fig. B4 of ISO/IEC-test chart 2, and ISO/IEC 15775, and input: LAB* setcolor
 Fig. D4 of ISO/IEC-test chart no. 4; ISO/IEC TR 24705; output: no change

