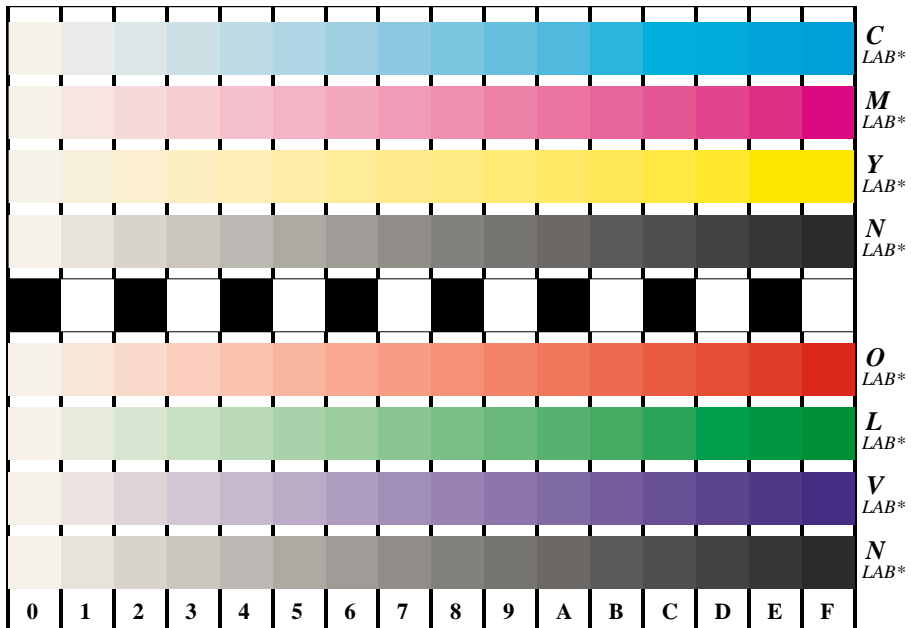


http://farbe.li.tu-berlin.de/FE85/FE85L0N1.PS /.TXT start output  
 N: no 3D-linearization (OL) in file (F) or PS-startup (S)

see similar files: <http://farbe.li.tu-berlin.de/FE85/FE85.HTM>  
 technical information: <http://farbe.li.tu-berlin.de/>

Version 2.0, 10-5,10



BAM Registration: 20031201-*FE85/FE85L0N1.PS /.TXT*  
 application for display output

BAM material: code=*hda4*

Picture B4 and D4: 16 equidistant steps *B4: W-C, W-M, W-Y and W-N; D4: W-O, W-L, W-V and W-N(CMY)*; PS operators; *B4: LAB\* setcolor; D4: LAB\* setcolor*

Fig. B4 of ISO/IEC-test chart 2, and Fig. D4 of ISO/IEC-test chart no. 4; ISO/IEC 15775, and ISO/IEC TR 24705; input: *LAB\* setcolor* output: *no change*