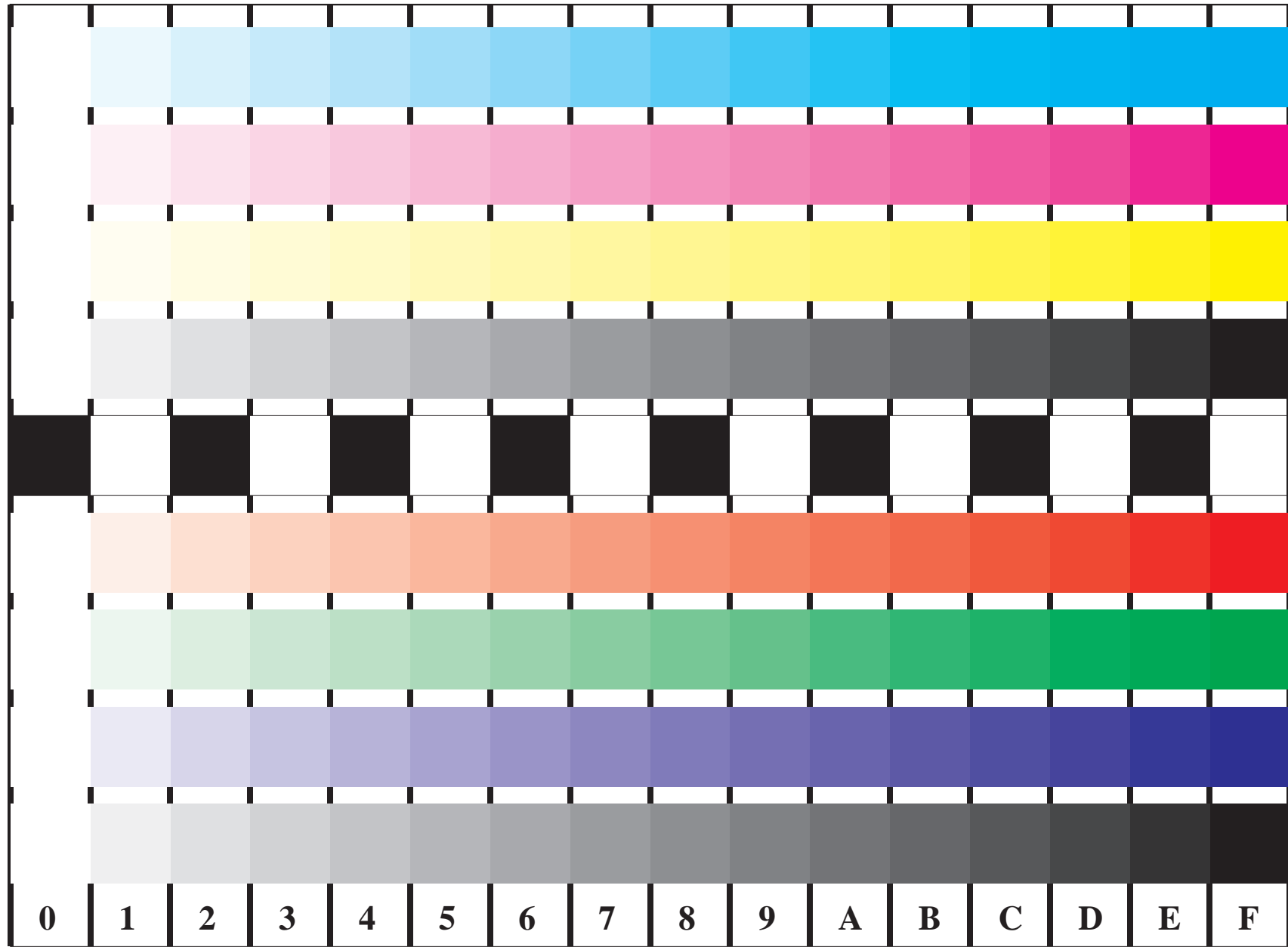


see similar files: <http://farbe.li.tu-berlin.de/FE85/FE85L0FP.PDF> /PS  
technical information: <http://farbe.li.tu-berlin.de/FE85/FE85L0FP.PDF> /PS

BAM Registration: 20031201-FE85/FE85L0FP.PDF /PS  
application for display output,  $Y_r=10,0, L^*_N=33, C_{Y4}=9:1, XYZ$

BAM material: code=rha4ta



Version 2.0, io=5,0; iLRS; oLRS, CEXYZ

Picture B4 and D4: 16 equidistant steps **B4**: W-C, W-M, W-Y and W-N; **D4**: W-O, W-L, W-V and W-N(CMY); PS operators; B4: LAB\* setcolor; D4: LAB\* setcolor

Fig. B4 of ISO/IEC-test chart 2, and  
Fig. D4 of ISO/IEC-test chart no. 4;

ISO/IEC 15775, and  
ISO/IEC TR 24705;

input: LAB\* setcolor  
output: cmy0\* / 000n\* setcmykcolor

