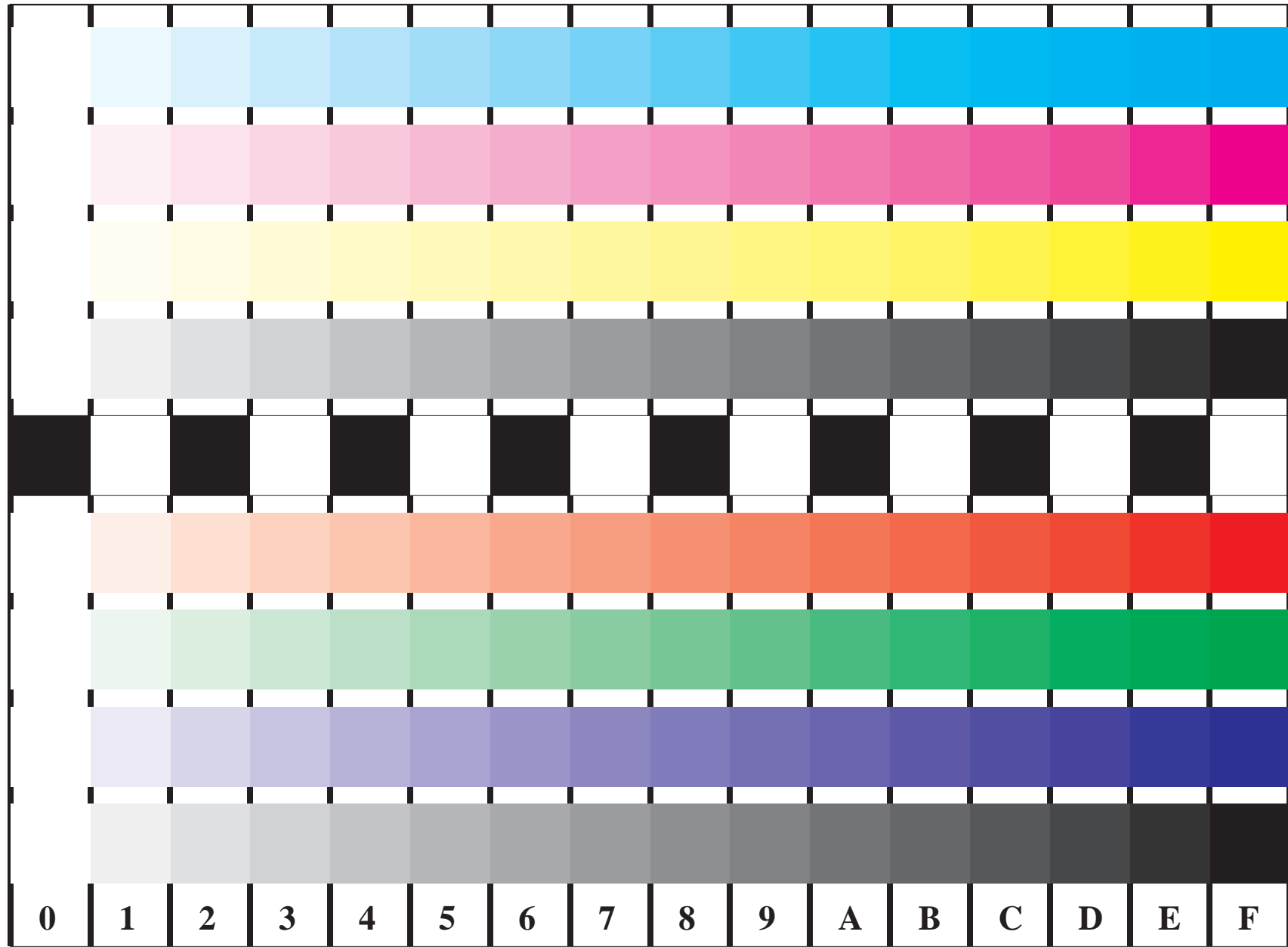


see similar files: <http://farbe.li.tu-berlin.de/FE84/FE84L0FP.PDF> /PS  
technical information: <http://farbe.li.tu-berlin.de/FE84/FE84L0FP.PDF> /PS

BAM Registration: 20031201-FE84/FE84L0FP.PDF /PS  
application for display output,  $Y_1=5,0, L^*N=27, C_{Y4}=18:1, XYZ$

BAM material: code=rha4ta

Version 2.0, io=5,0; iLRS; oLRS, CEXYZ



**C**  
*LAB\**  
**M**  
*LAB\**  
**Y**  
*LAB\**  
**N**  
*LAB\**  
**O**  
*LAB\**  
**L**  
*LAB\**  
**V**  
*LAB\**  
**N**  
*LAB\**

**0 1 2 3 4 5 6 7 8 9 A B C D E F**

Picture B4 and D4: 16 equidistant steps **B4**: W-C, W-M, W-Y and W-N; **D4**: W-O, W-L, W-V and W-N(CMY); PS operators; B4: *LAB\** setcolor; D4: *LAB\** setcolor

Fig. B4 of ISO/IEC-test chart 2, and  
Fig. D4 of ISO/IEC-test chart no. 4;

ISO/IEC 15775, and  
ISO/IEC TR 24705;

input: *LAB\** setcolor  
output: *cmY0\*/000n\** setcmYkcolor

