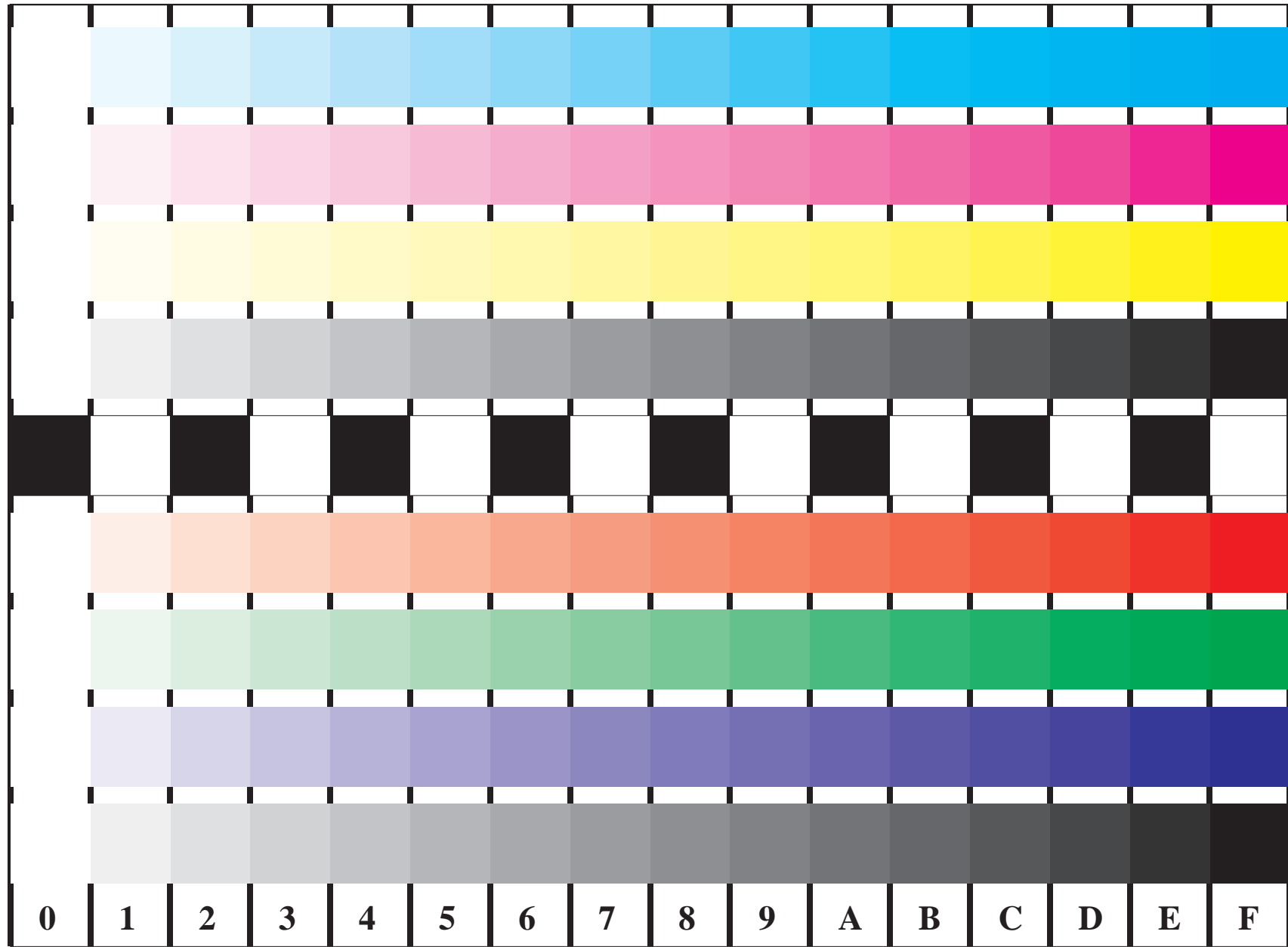


see similar files: <http://farbe.li.tu-berlin.de/FE83/FE83L0FP.PDF> /
<http://farbe.li.tu-berlin.de/FE83/FE83L0FP.PDF> /
 technical information: [http://farbe.li.tu-berlin.de/](http://farbe.li.tu-berlin.de/FE83/FE83L0FP.PDF)
 Version 2.0, io=5,0; iLRS; oLRS, cMXYZ

BAM Registration: 20031201-FE83/FE83L0FP.PDF / .PS
 application for display output, $Y_1=2,5, L^*_{N}=18, C_{Y5}=36:1, XYZ$
 BAM material: code=rha4ta



Picture B4 and D4: 16 equidistant steps **B4:** W-C, W-M, W-Y and W-N; **D4:** W-O, W-L, W-V and W-N(CMY); PS operators; B4: LAB* setcolor; D4: LAB* setcolor

Fig. B4 of ISO/IEC-test chart 2, and ISO/IEC 15775, and input: LAB* setcolor
 Fig. D4 of ISO/IEC-test chart no. 4; ISO/IEC TR 24705; output: cmy0* / 000n* setcmykcolor

