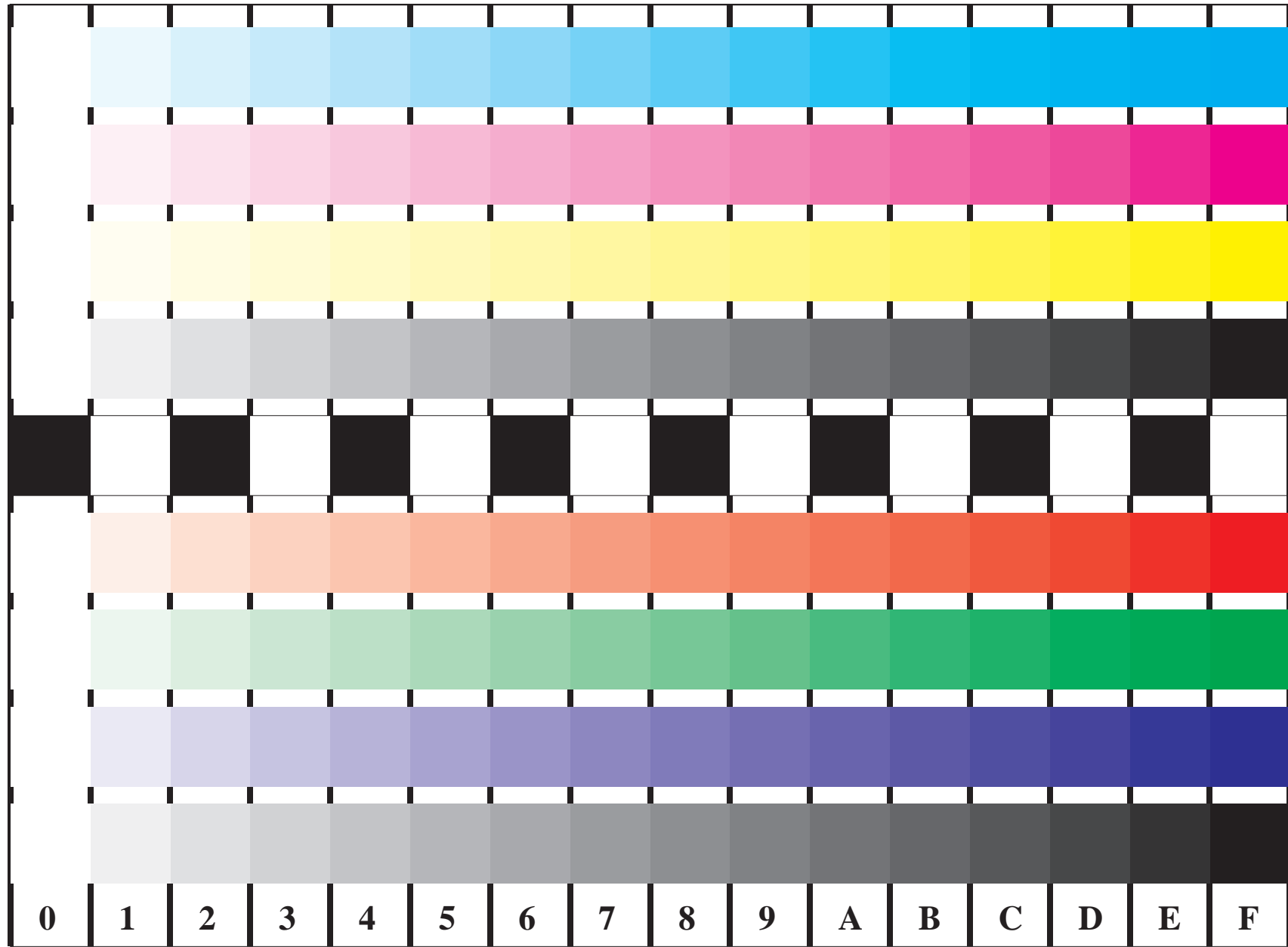


see similar files: <http://farbe.li.tu-berlin.de/FE82/FE82L0FP.PDF> /  
 technical information: <http://farbe.li.tu-berlin.de/FE82/FE82L0FP.PDF>

BAM Registration: 20031201-FE82/FE82L0FP.PDF /.PS  
 application for display output,  $Y_1=0,0, L^*_{N=0}, C_{Y8}=288:1, XYZ$

BAM material: code=rha4ta



**C**  
LAB\*

**M**  
LAB\*

**Y**  
LAB\*

**N**  
LAB\*

**O**  
LAB\*

**L**  
LAB\*

**V**  
LAB\*

**N**  
LAB\*

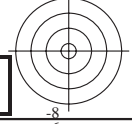
**0 1 2 3 4 5 6 7 8 9 A B C D E F**

Picture B4 and D4: 16 equidistant steps **B4**: W-C, W-M, W-Y and W-N; **D4**: W-O, W-L, W-V and W-N(CMY); PS operators; B4: LAB\* setcolor; D4: LAB\* setcolor

Fig. B4 of ISO/IEC-test chart 2, and  
 Fig. D4 of ISO/IEC-test chart no. 4;

ISO/IEC 15775, and  
 ISO/IEC TR 24705;

input: LAB\* setcolor  
 output: cmy0\* / 000n\* setcmykcolor



Version 2.0, io=5,0; iLRS; oLRS, CEXYZ