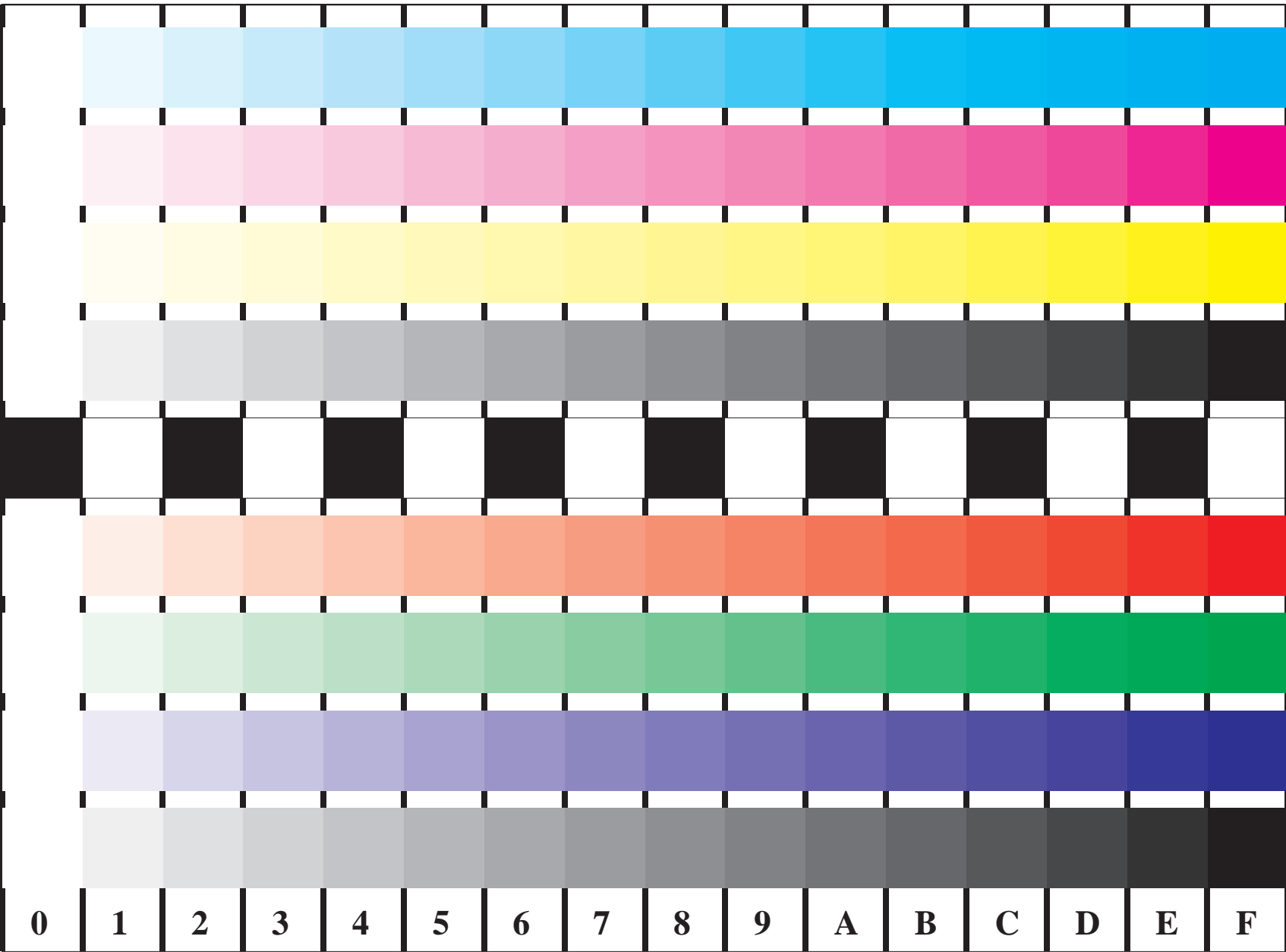


see similar files: <http://farbe.li.tu-berlin.de/FE82/FE82L0FA.PS /.TXT>
technical information: <http://farbe.li.tu-berlin.de/FE82/FE82L0FA.PS /.TXT>

BAM Registration: 20031201-FE82/FE82L0FA.PS /.TXT
application for display output, $Y_r=0,0, L^*_N=0, C_{Y8}=288:1, XYZ$

BAM material: code=rha4ta



C
*LAB**
M
*LAB**
Y
*LAB**
N
*LAB**
O
*LAB**
L
*LAB**
V
*LAB**
N
*LAB**

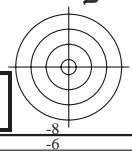
0 1 2 3 4 5 6 7 8 9 A B C D E F

Picture B4 and D4: 16 equidistant steps **B4**: W-C, W-M, W-Y and W-N; **D4**: W-O, W-L, W-V and W-N(CMY); PS operators; B4: *LAB** setcolor; D4: *LAB** setcolor

Fig. B4 of ISO/IEC-test chart 2, and
Fig. D4 of ISO/IEC-test chart no. 4;

ISO/IEC 15775, and
ISO/IEC TR 24705;

input: *LAB** setcolor
output: *cmY0*/000n** setcmYkcolor



Version 2.0, io=5,0; iLRS; oLRS, **CHEXYZ**

