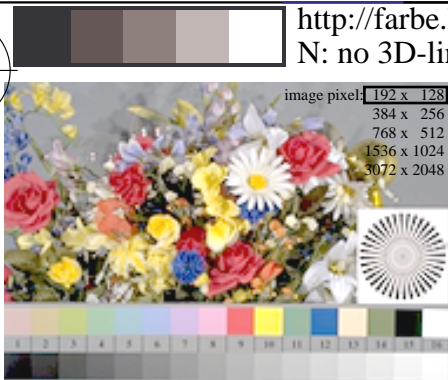


http://farbe.li.tu-berlin.de/DEK7/DEK7L0NP.PDF /.PS; start output  
N: no 3D-linearization (OL) in file (F) or PS-startup (S), page 1/1

see similar files: <http://farbe.li.tu-berlin.de/DEK7/DEK7.HTM>  
technical information: <http://farbe.li.tu-berlin.de/> or <http://color.li.tu-berlin.de/>



DEK70-1N, da\_rgbd\*; sf, exposure +0.5 stop, pixel: 192x128, gP=0.475



DEK70-2N, da\_rgbd\*; sf, exposure +0.5 stop, pixel: 192x128, gP=0.550



DEK71-1N, da\_rgbd\*; nf, exposure +1.0 stop, pixel: 192x128, gP=0.475



DEK71-2N, da\_rgbd\*; nf, exposure +1.0 stop, pixel: 192x128, gP=0.500



DEK70-3N, da\_rgbd\*; sf, exposure +0.5 stop, pixel: 192x128, gP=0.625



DEK70-4N, da\_rgbd\*; sf, exposure +0.5 stop, pixel: 192x128, gP=0.700



DEK71-3N, da\_rgbd\*; nf, exposure +1.0 stop, pixel: 192x128, gP=0.625



DEK71-4N, da\_rgbd\*; nf, exposure +1.0 stop, pixel: 192x128, gP=0.700



DEK70-5N, da\_rgbd\*; sf, exposure +0.5 stop, pixel: 192x128, gP=0.775



DEK70-6N, da\_rgbd\*; sf, exposure +0.5 stop, pixel: 192x128, gP=0.850



DEK71-5N, da\_rgbd\*; nf, exposure +1.0 stop, pixel: 192x128, gP=0.775



DEK71-6N, da\_rgbd\*; nf, exposure +1.0 stop, pixel: 192x128, gP=0.850



DEK70-7N, da\_rgbd\*; sf, exposure +0.5 stop, pixel: 192x128, gP=0.925



DEK70-8N, da\_rgbd\*; sf, exposure +0.5 stop, pixel: 192x128, gP=1.000



DEK71-7N, da\_rgbd\*; nf, exposure +1.0 stop, pixel: 192x128, gP=0.925



DEK71-8N, da\_rgbd\*; nf, exposure +1.0 stop, pixel: 192x128, gP=1.000

TUB-test chart DEK7; Scan with linearization, slide (sf), and negative film (nf),  $0,475 \leq gP \leq 1,000$   
Reflective test chart according to ISO CEN 9241-306 and ISO/IEC 15775, pixel: 192x128

TUB registration: 20220901-DEK7/DEK7L0NP.PDF /.PS  
application for measurement of display or print output

TUB material: code=rh4ta