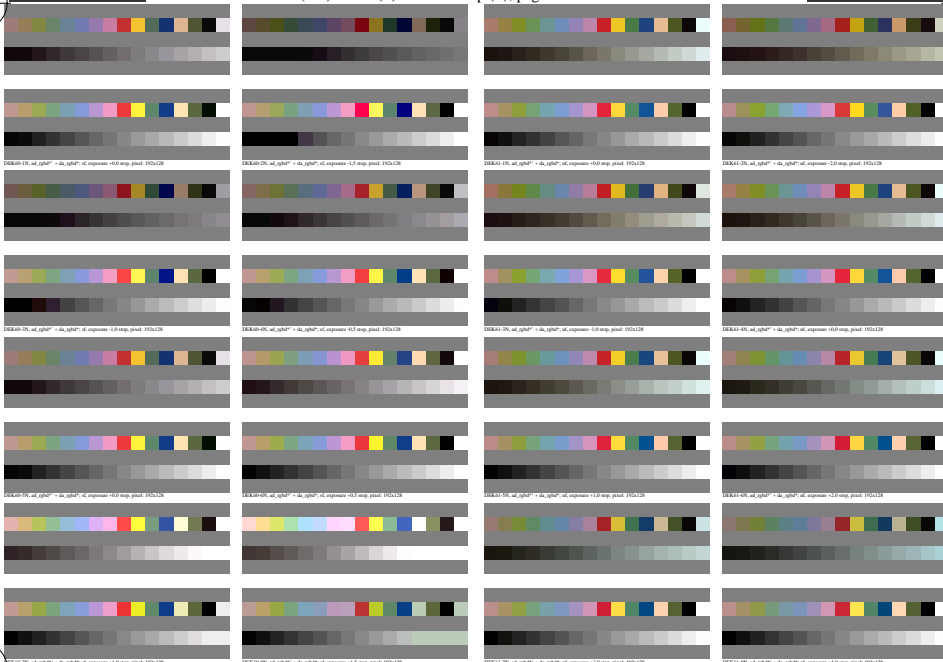


<http://farbe.li.tu-berlin.de/DEK6/DEK6L0N1.TXT> / .PS; start output  
N: no 3D-linearization (OL) in file (F) or PS-startup (S), page 1/1

see similar files: <http://farbe.li.tu-berlin.de/DEK6/DEK6.HTM>  
technical information: <http://farbe.li.tu-berlin.de/> or <http://color.li.tu-berlin.de/>

TUB registration: 20220901-DEK6/DEK6L0N1.TXT / .PS  
application for measurement of display or print output

TUB material code=th44ta



TUB-test chart DEK6; Photo CD: raw scan without and with linearization, only 32 samples  
Reflective test chart according to ISO/IEC 15775/ed-2:2022, pixel: 192x128