

http://farbe.li.tu-berlin.de/DEK3/DEK3L0NP.PDF /.PS; start output  
N: no 3D-linearization (OL) in file (F) or PS-startup (S), page 1/1

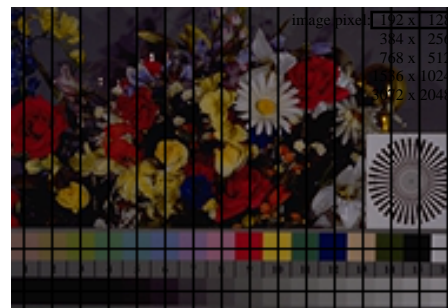
see similar files: <http://farbe.li.tu-berlin.de/DEK3/DEK3.HTM>  
technical information: <http://farbe.li.tu-berlin.de/> or <http://color.li.tu-berlin.de/>

TUB registration: 20220901-DEK3/DEK3L0NP.PDF /.PS  
application for measurement of display or print output

TUB material: code=rha4ta



DEK30-1N, ad\_rgbd\*\*; sf, exposure +0.0 stop, pixel: 192x128



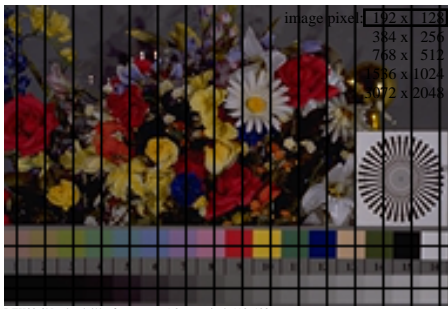
DEK30-2N, ad\_rgbd\*\*; sf, exposure -1.5 stop, pixel: 192x128



DEK31-1N, ad\_rgbd\*\*; nf, exposure +0.0 stop, pixel: 192x128



DEK31-2N, ad\_rgbd\*\*; nf, exposure -2.0 stop, pixel: 192x128



DEK30-3N, ad\_rgbd\*\*; sf, exposure -1.0 stop, pixel: 192x128



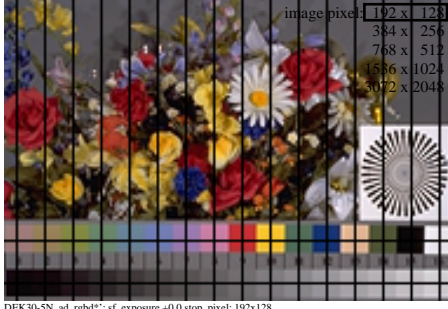
DEK30-4N, ad\_rgbd\*\*; sf, exposure -0.5 stop, pixel: 192x128



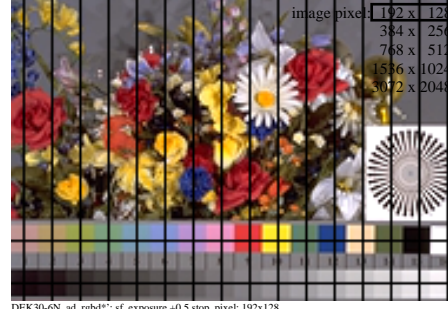
DEK31-3N, ad\_rgbd\*\*; nf, exposure -1.0 stop, pixel: 192x128



DEK31-4N, ad\_rgbd\*\*; nf, exposure +0.0 stop, pixel: 192x128



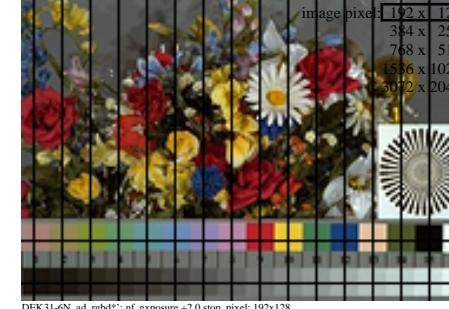
DEK30-5N, ad\_rgbd\*\*; sf, exposure +0.0 stop, pixel: 192x128



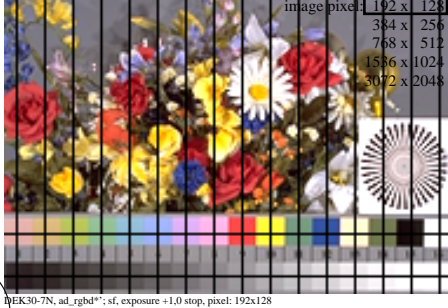
DEK30-6N, ad\_rgbd\*\*; sf, exposure +0.5 stop, pixel: 192x128



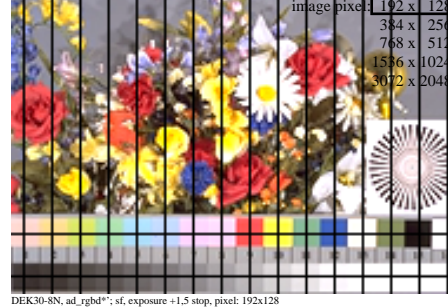
DEK31-5N, ad\_rgbd\*\*; nf, exposure +1.0 stop, pixel: 192x128



DEK31-6N, ad\_rgbd\*\*; nf, exposure +2.0 stop, pixel: 192x128



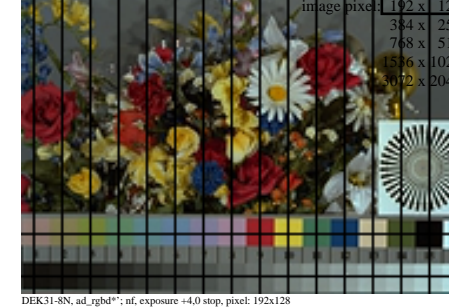
DEK30-7N, ad\_rgbd\*\*; sf, exposure +1.0 stop, pixel: 192x128



DEK30-8N, ad\_rgbd\*\*; sf, exposure +1.5 stop, pixel: 192x128



DEK31-7N, ad\_rgbd\*\*; nf, exposure +3.0 stop, pixel: 192x128



DEK31-8N, ad\_rgbd\*\*; nf, exposure +4.0 stop, pixel: 192x128

TUB-test chart DEK3; Photo CD: raw scan without linearization, reduced scale, with grid  
Reflective test chart according to ISO/IEC 15775/ed-2:2022, pixel: 192x128