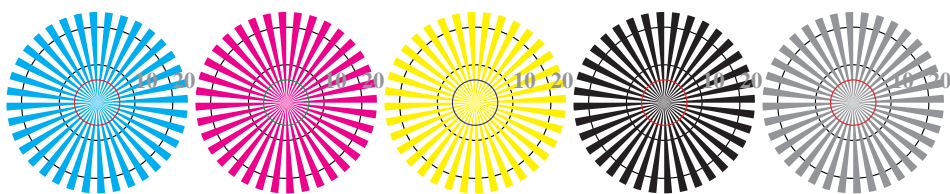


http://farbe.li.tu-berlin.de/DE96/DE96L0NP.PDF /PS start output  
 N: no 3D-linearization (OL) in file (F) or PS-startup (S)

image pixel: 192 x 128  
 384 x 256  
 768 x 512  
 1536 x 1024  
 3072 x 2048

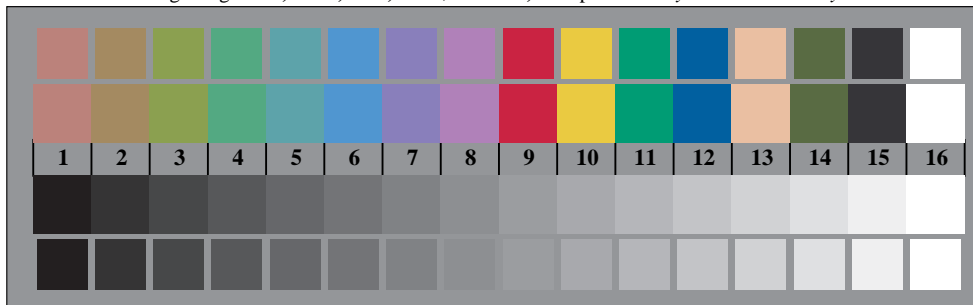


Picture B1: Flower motif, 14 CIE-test colours and 2 + 16 grey steps (sf); PS operators *settransfer*, 4 *colorimage*



Radial grating W-C   Radial grating W-M   Radial grating W-Y   Radial grating W-N   Radial grating W-Z

Picture B2: Radial gratings W-C, W-M, W-Y, W-N, and W-Z; PS operator: *cmY0\*/000n\* setcmYcolor*

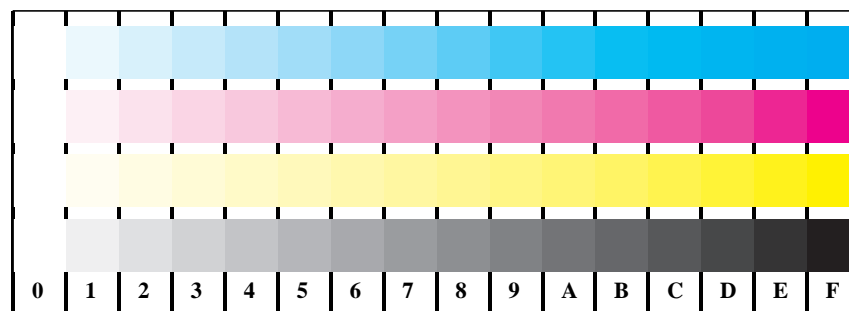


Picture B3: 14 CIE-test colours and 2 + 16 grey steps (sf); PS operator: *cmY0\*/000n\* setcmYcolor*

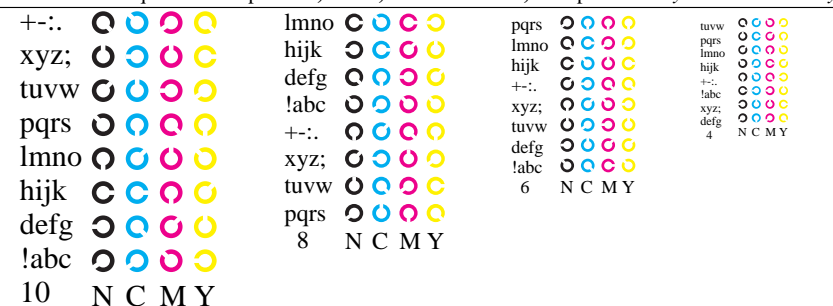
Fig. B1 to B7 of ISO/IEC-test chart 2;

ISO/IEC 15775 and  
 ISO/IEC TR 24705;

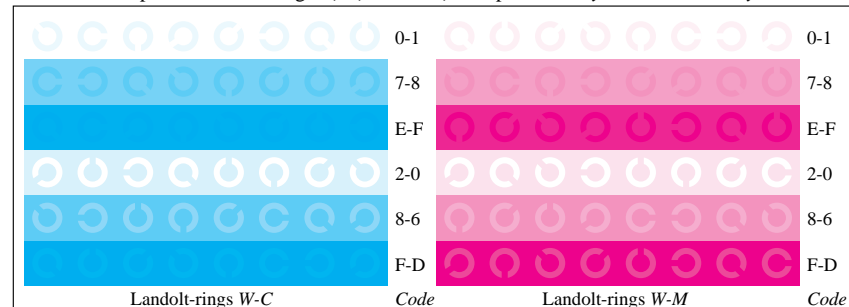
input: *cmY0\*/000n\* setcmYcolor*  
 output: *no change*



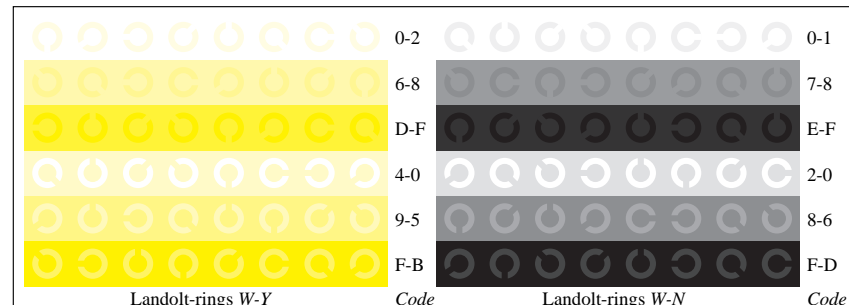
Picture B4: 16 equidistant steps W-C, W-M, W-Y and W-N; PS operator: *cmY0\*/000n\* setcmYcolor*



Picture B5: Sript and Landolt-rings N, C, M and Y; PS operator: *cmY0\*/000n\* setcmYcolor*



Picture B6: Landolt-rings W-C and W-M; PS operator: *cmY0\*/000n\* setcmYcolor*



Picture B7: Landolt-rings W-Y and W-N; PS operator: *cmY0\*/000n\* setcmYcolor*

BAM Registration: 20031201-DE96/DE96L0NP.PDF /PS  
 application for display output (Yr=2.5) and printer output

TUB material: code=rha4ta

see similar files: <http://farbe.li.tu-berlin.de/DE96/DE96L0NP.PDF>  
 technical information: <http://farbe.li.tu-berlin.de/>

Version 2.0, io=0,0