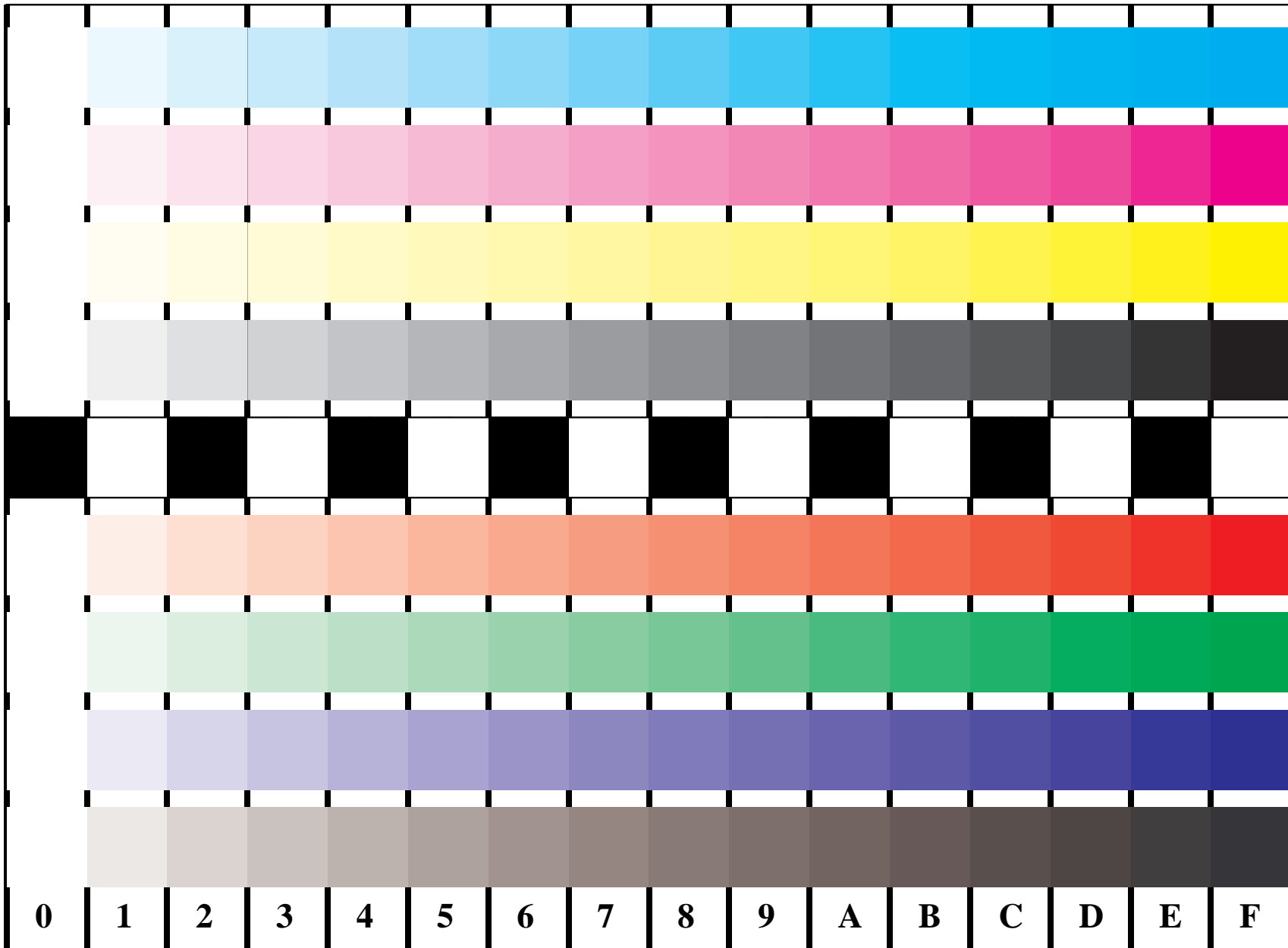


http://farbe.li.tu-berlin.de/DE95/DE95L0NP.PDF /.PS start output
 N: no 3D-linearization (OL) in file (F) or PS-startup (S)

see similar files: <http://farbe.li.tu-berlin.de/DE95/DE95L0NP.PDF> /.PS
<http://farbe.li.tu-berlin.de/DE95/DE95L0NP.PDF> /.PS
 application for display output (Yr=0,0) and printer output
 B4: $cmy0^* / 000n^* setcmykcolor$
 D4: $cmy0^* setcmykcolor$ (only)
 Version 2.0, io=0,0

BAM Registration: 20031201-DE95/DE95L0NP.PDF /.PS
 application for display output (Yr=0,0) and printer output
 BAM material: code=rha4ta



Picture B4 and D4: 16 equidistant steps **B4**: *W-C, W-M, W-Y* and *W-N*; **D4**: *W-O, W-L, W-V* and *W-N(CMY)*; PS operators; B4: $cmy0^* / 000n^* setcmykcolor$; D4: $cmy0^* setcmykcolor$ (only)

Fig. B4 of ISO/IEC-test chart 2, and
 Fig. D4 of ISO/IEC-test chart no. 4;

ISO/IEC 15775, and
 ISO/IEC TR 24705;

input: $cmy0^* / 000n^* setcmykcolor$
 output: no change

*=*input*