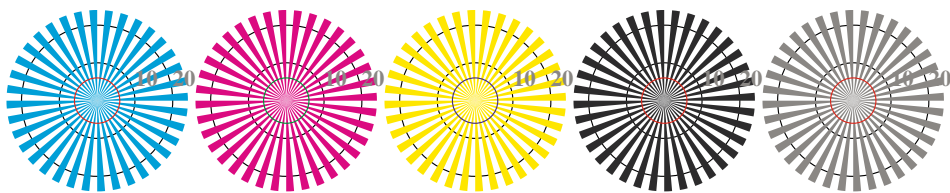


http://farbe.li.tu-berlin.de/DE92/DE92L0NP.PDF /PS start output
 N: no 3D-linearization (OL) in file (F) or PS-startup (S)

image pixel: 192 x 128
 384 x 256
 768 x 512
 1536 x 1024
 3072 x 2048



Picture B1: Flower motif, 14 CIE-test colours and 2 + 16 grey steps (sf); PS operators *settransfer*, 3 *colorimage*



Radial grating W-C Radial grating W-M Radial grating W-Y Radial grating W-N Radial grating W-Z

Picture B2: Radial gratings W-C, W-M, W-Y, W-N, and W-Z; PS operator: *LAB* setcolor*

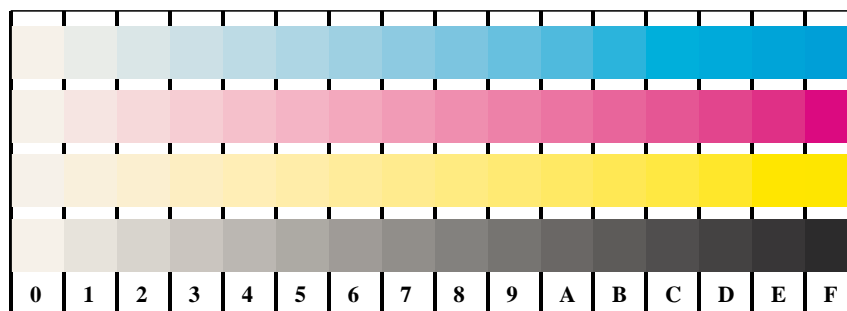


Picture B3: 14 CIE-test colours and 2 + 16 grey steps (sf); PS operator: *LAB* setcolor*

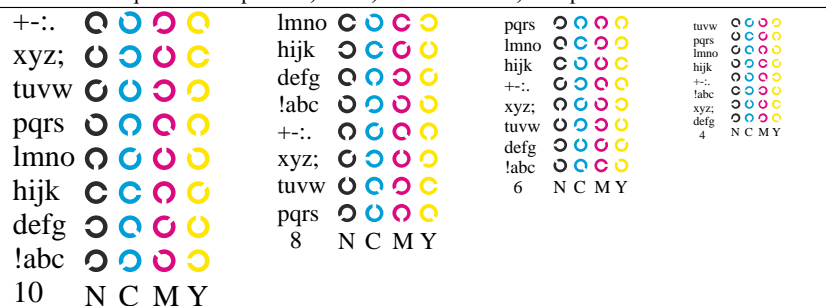
Fig. B1 to B7 of ISO/IEC-test chart 2;

ISO/IEC 15775 and ISO/IEC TR 24705;

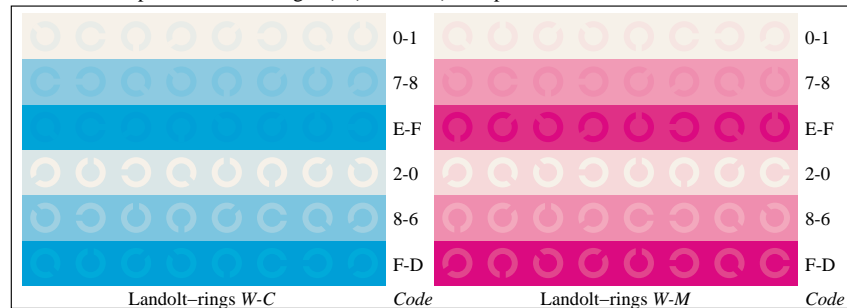
input: *LAB* setcolor*
 output: *no change*



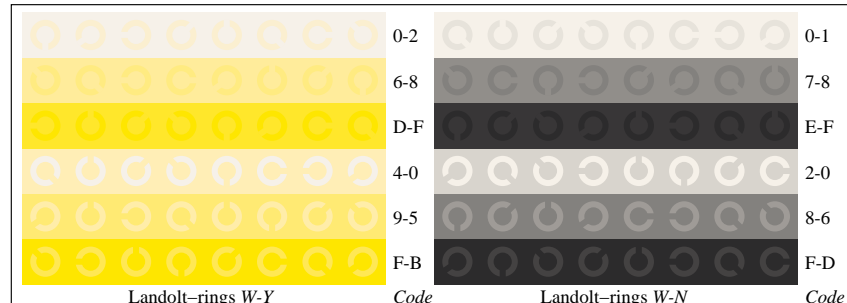
Picture B4: 16 equidistant steps W-C, W-M, W-Y and W-N; PS operator: *LAB* setcolor*



Picture B5: Sript and Landolt-rings N, C, M and Y; PS operator: *LAB* setcolor*



Picture B6: Landolt-rings W-C and W-M; PS operator: *LAB* setcolor*



Picture B7: Landolt-rings W-Y and W-N; PS operator: *LAB* setcolor*

BAM Registration: 20031201-DE92/DE92L0NP.PDF /PS
 application for display output (Yr=2.5) and printer output

TUB material: code=rha4ta

see similar files: http://farbe.li.tu-berlin.de/DE92/DE92.HTM
 technical information: http://farbe.li.tu-berlin.de/

Version 2.0, io=5,5