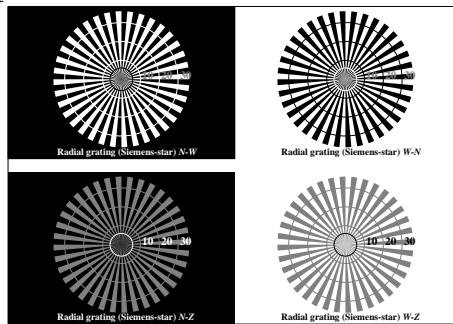
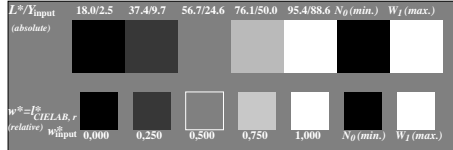


see similar files: <http://farbe.li.tu-berlin.de/DE89/DE89LHTM>
 technical information: <http://farbe.li.tu-berlin.de/>

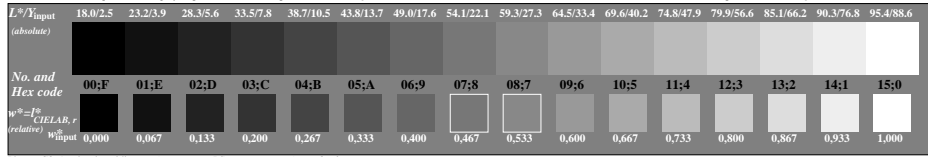
Version 2.0, to=5.5



Picture C1: Radial gratings (Siemens-stars) N-W, W-N, N-Z and W-Z; PS operator: $www^* setrgbcolor$



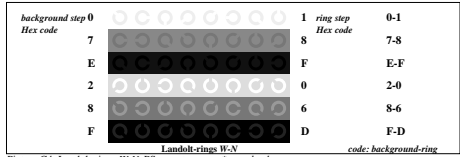
Picture C2: 5 visual equidistant L^* -grey steps + N_0 + W_1 ; PS operator: $www^* setrgbcolor$



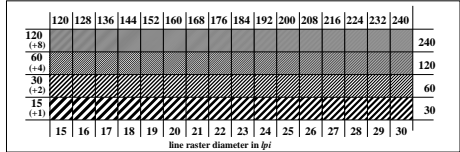
Picture C3: 16 visual equidistant L^* -grey steps; PS operator: $www^* setrgbcolor$

Fig. C1 to C6 of ISO/IEC-test chart 3;

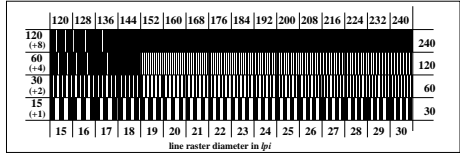
ISO/IEC 15775 and ISO/IEC TR 24705; input: $www^* setrgbcolor$ output: *no change*



Picture C4: Landolt-rings W-N; PS operator: $www^* setrgbcolor$



Picture C5: Line raster under 45° (or 135°); PS operator: $www^* setrgbcolor$



Picture C6: Line raster under 90° (or 0°); Use of the PS operator $www^* setrgbcolor$

BAM Registration: 20031201-DE89/DE89L0N1.PS /TXT
 application for display output (Yr=2.5) and printer output

TUB material: code=thata