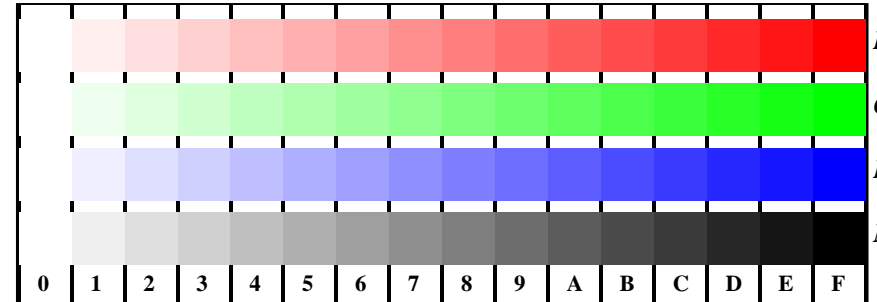
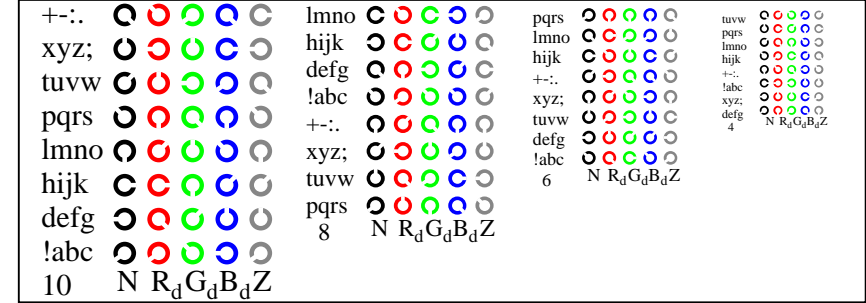


vedevi file simili: <http://farbe.li.tu-berlin.de/AI19/AI19.HTM>
 Informazioni tecniche: <http://farbe.li.tu-berlin.de/> o <http://farbe.li.tu-berlin.de/AE.HTM>

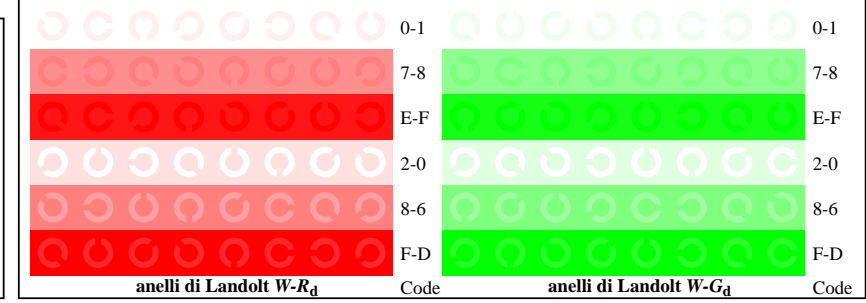
iscrizione TUB: 20190301-AI19/AI19L0FA.TXT /.PS
 Applicazione per la misura dell'output di display et output di stampa
 TUB materiale: code=rhata



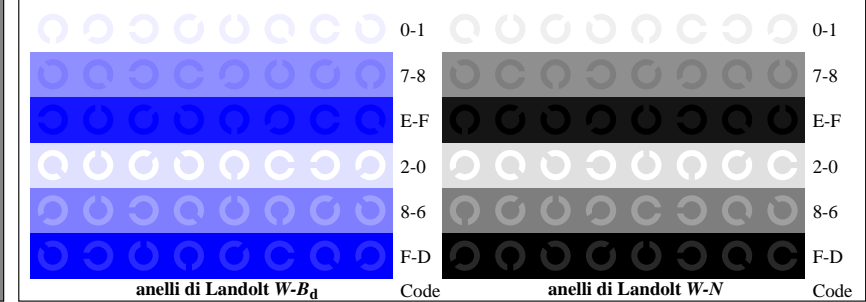
AI191-1, Fig. D4Wdd: 16 equidistante passi $W-R_d$; $W-G_d$; $W-B_d$; $W-N$; $rgb/cmy0 \rightarrow rgb_{dd}$ setrgbcolor



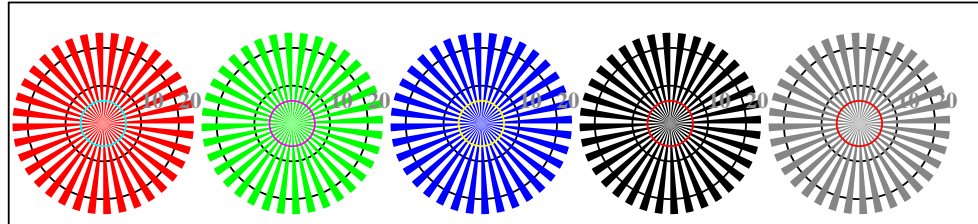
AI191-3, Fig. D5Wdd: codice i Landolt anelli N ; R_d ; G_d ; B_d ; Z ; PS operator: $rgb \rightarrow rgb_{dd}$ setrgbcolor



AI191-5, Fig. D6Wdd: anelli di Landolt $W-R_d$; $W-G_d$; PS operator: $rgb \rightarrow rgb_{dd}$ setrgbcolor

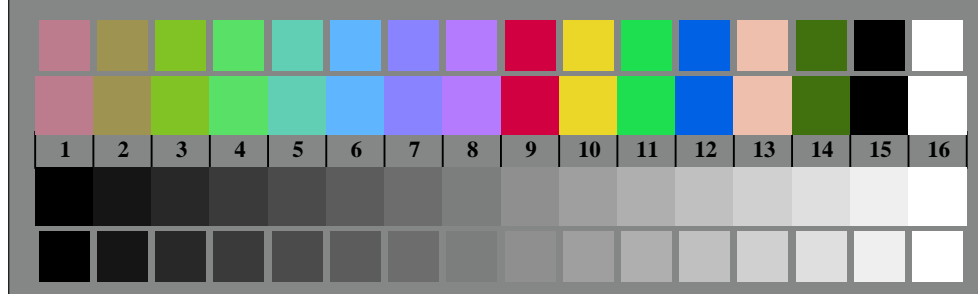


AI191-7, Fig. D7Wdd: anelli di Landolt $W-B_d$; $W-N$; PS operator: $rgb \rightarrow rgb_{dd}$ setrgbcolor



reticoli radiali $W-R_d$ reticoli radiali $W-G_d$ reticoli radiali $W-B_d$ reticoli radiali $W-N$ reticoli radiali $W-Z$

AI190-5, Fig. D2Wdd: reticoli radiali $W-R_d$; $W-G_d$; $W-B_d$; $W-N$; PS operator: $rgb \rightarrow rgb_{dd}$ setrgbcolor



AI190-7, Fig. D3Wdd: 14 prova colori CIE i 2 + 16 grigio passi (sf); $rgb/cmy0 \rightarrow rgb_{dd}$ setrgbcolor



Grafico AI19 conformemente a grafico 4 a ISO/IEC 15775
 Tavola dei colori cromatici RGB

Input: $rgb/cmy0/000n/w$ set...
 Output: $\rightarrow rgb_{dd}$ setrgbcolor

