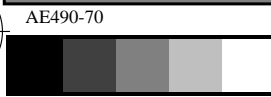
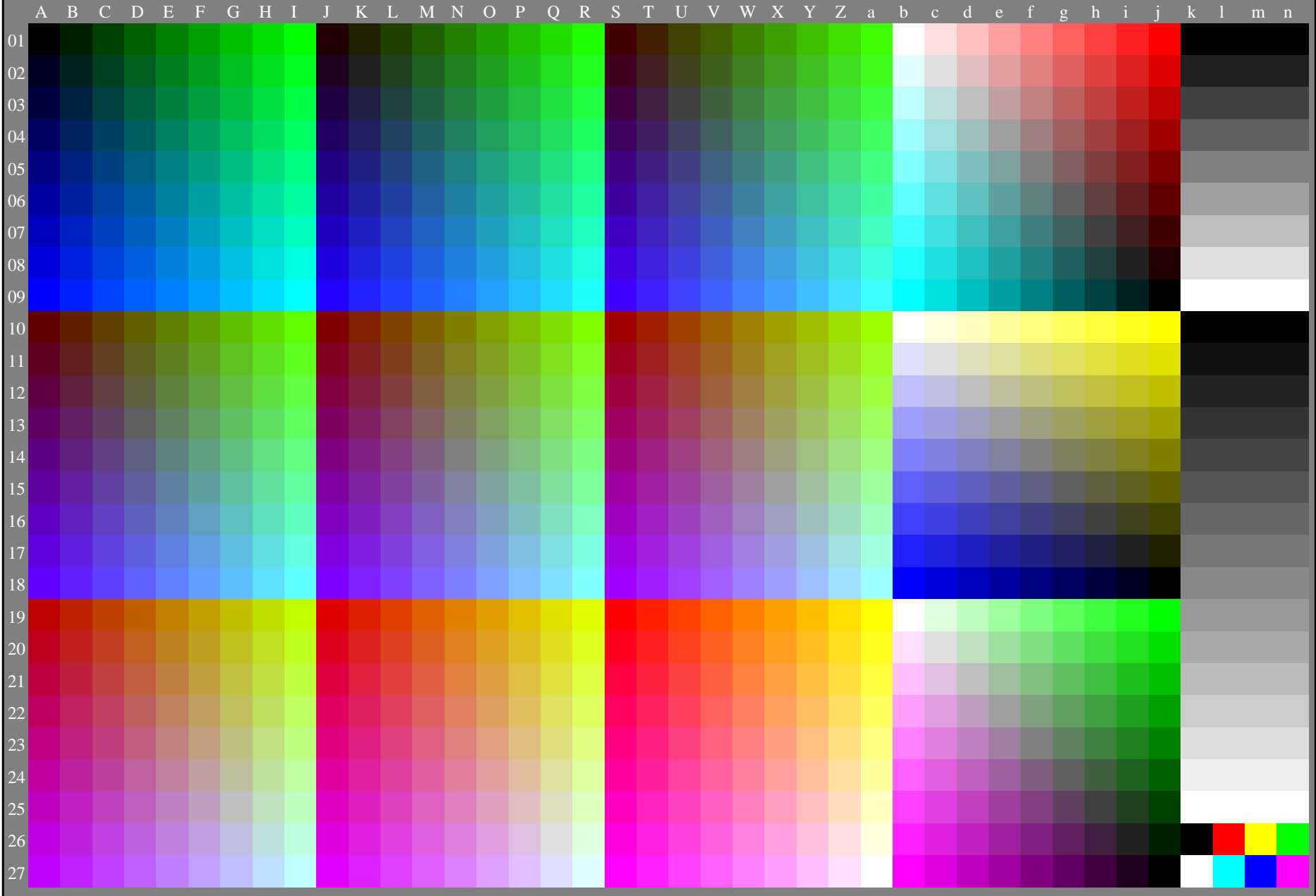


see similar files: <http://farbe.li.tu-berlin.de/AE49/AE49L0FA.TXT> / .PS  
technical information: <http://farbe.li.tu-berlin.de/AE49/HTM>

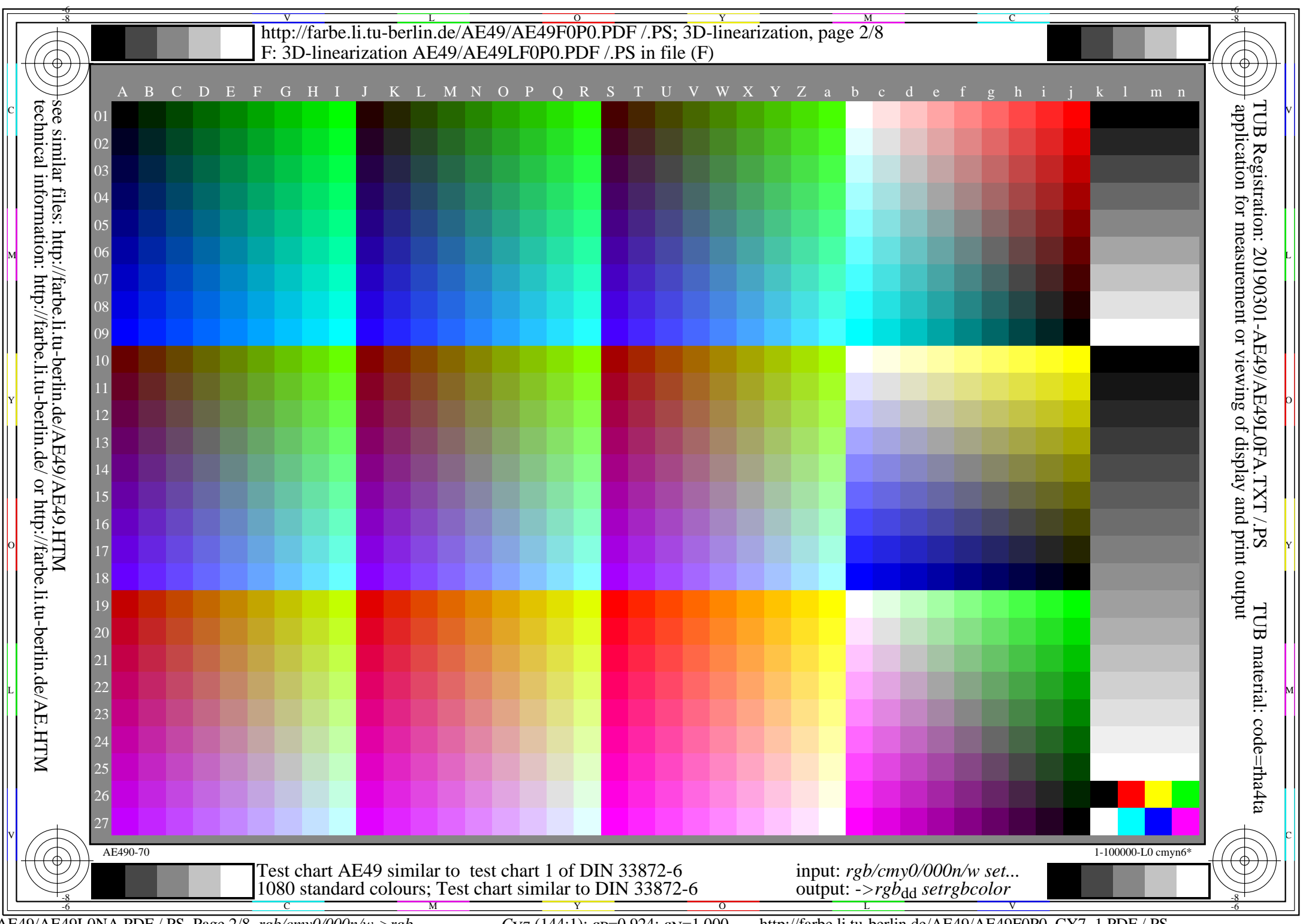
TUB Registration: 20190301-AE49/AE49L0FA.TXT / .PS  
application for measurement or viewing of display and print output  
TUB material: code=rh4d4a



Test chart AE49 similar to test chart 1 of DIN 33872-6  
1080 standard colours; Test chart similar to DIN 33872-6

input: *rgb/cmy0/000n/w set...*  
output: *->rgb<sub>dd</sub> setrgbcolor*





see similar files: <http://farbe.li.tu-berlin.de/AE49/AE49L0FA.TXT> / .PS  
technical information: <http://farbe.li.tu-berlin.de/AE49/HTM>

TUB Registration: 20190301-AE49/AE49L0FA.TXT / .PS  
application for measurement or viewing of display and print output  
TUB material: code=rhata

AE490-70

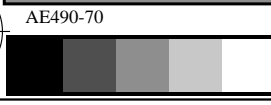
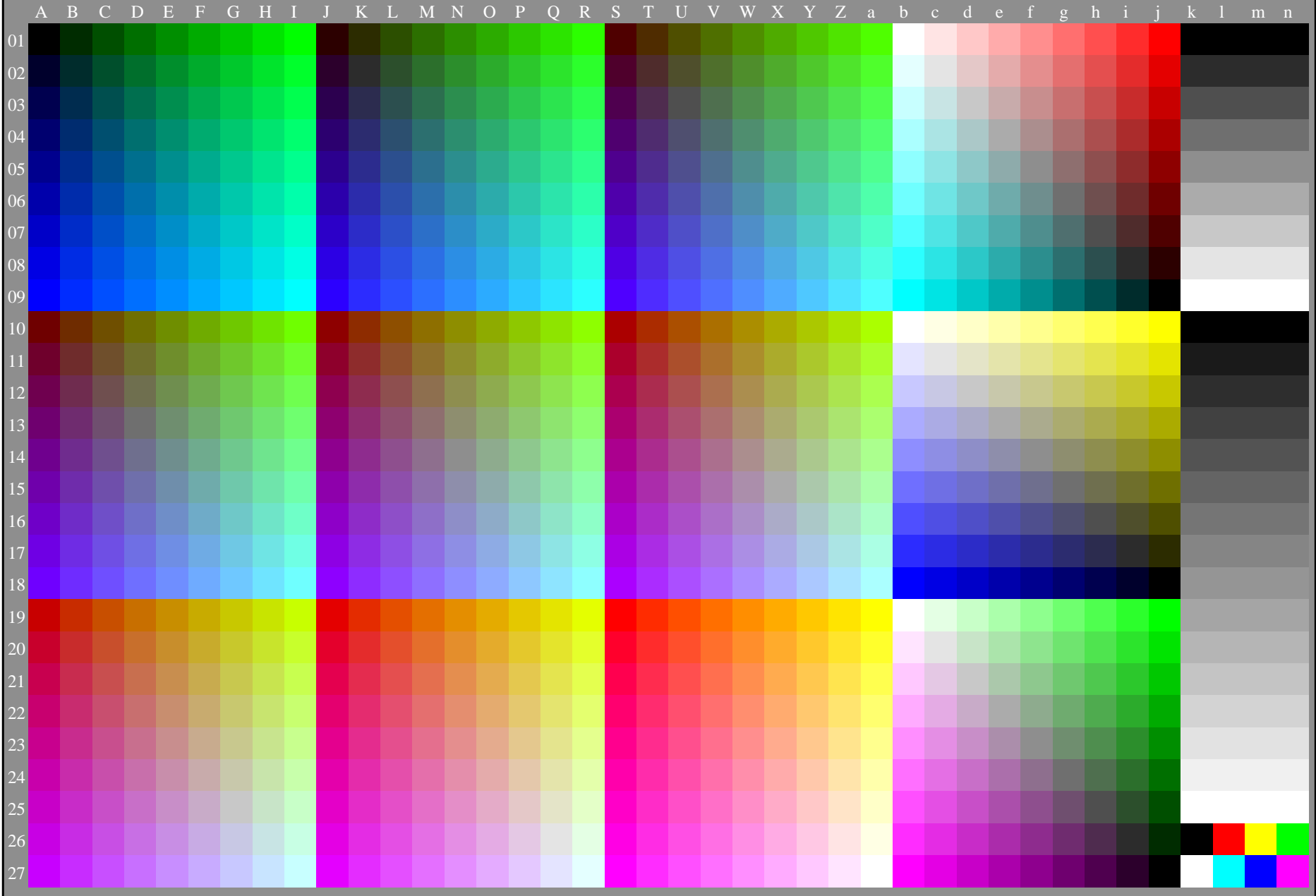
1-100000-L0 cmyn6\*

Test chart AE49 similar to test chart 1 of DIN 33872-6  
1080 standard colours; Test chart similar to DIN 33872-6

input: *rgb/cmy0/000n/w set...*  
output: *->rgb<sub>dd</sub> setrgbcolor*

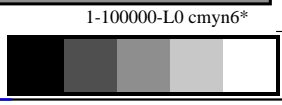
see similar files: <http://farbe.li.tu-berlin.de/AE49/AE49L0FA.TXT> / .PS  
technical information: <http://farbe.li.tu-berlin.de/AE49/HTM>

TUB Registration: 20190301-AE49/AE49L0FA.TXT / .PS  
application for measurement or viewing of display and print output  
TUB material: code=rhata



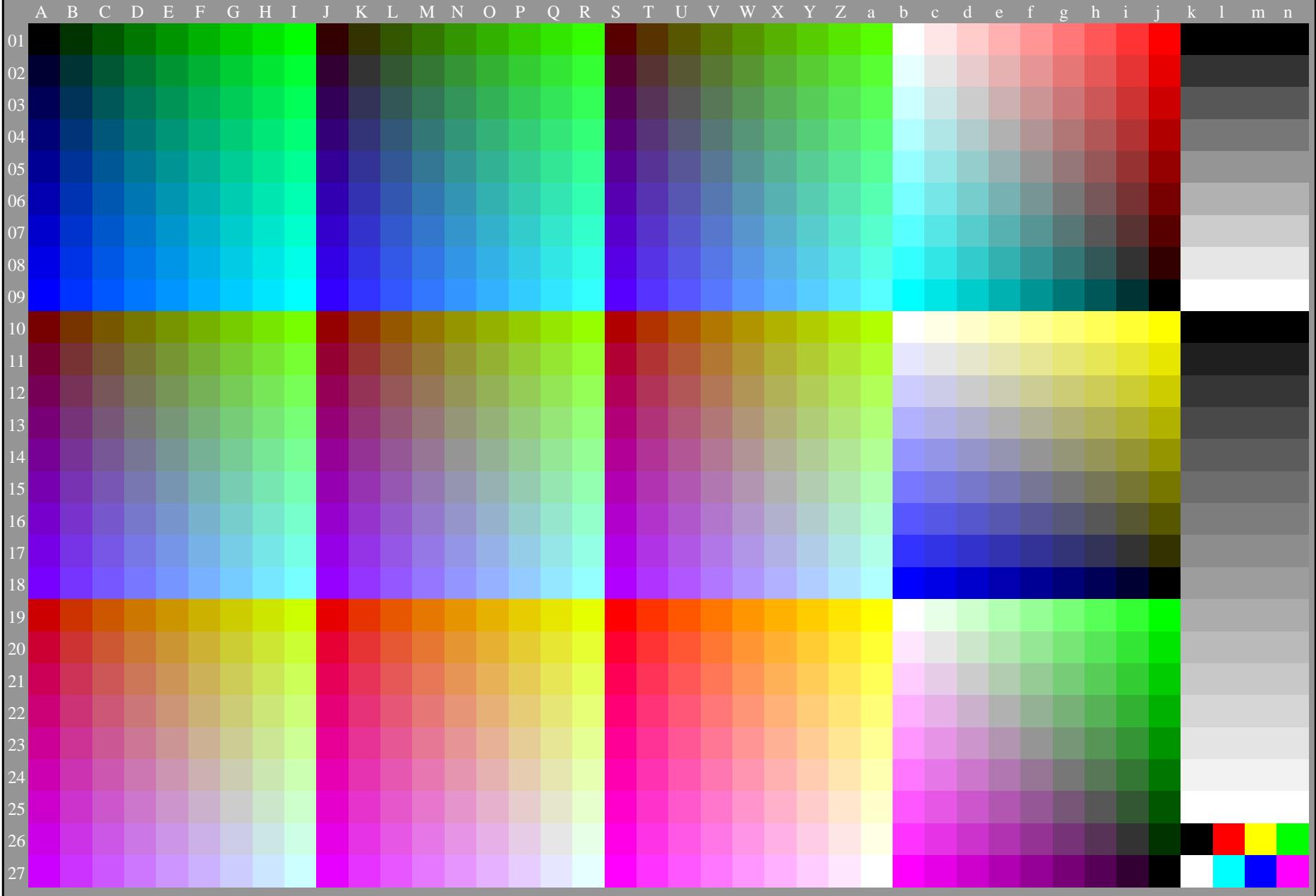
Test chart AE49 similar to test chart 1 of DIN 33872-6  
1080 standard colours; Test chart similar to DIN 33872-6

input: *rgb/cmy0/000n/w set...*  
output: *->rgb<sub>dd</sub> setrgbcolor*



see similar files: <http://farbe.li.tu-berlin.de/AE49/AE49L0FA.TXT/.PS>  
technical information: <http://farbe.li.tu-berlin.de/AE49/HTM> or <http://farbe.li.tu-berlin.de/AE.HTM>

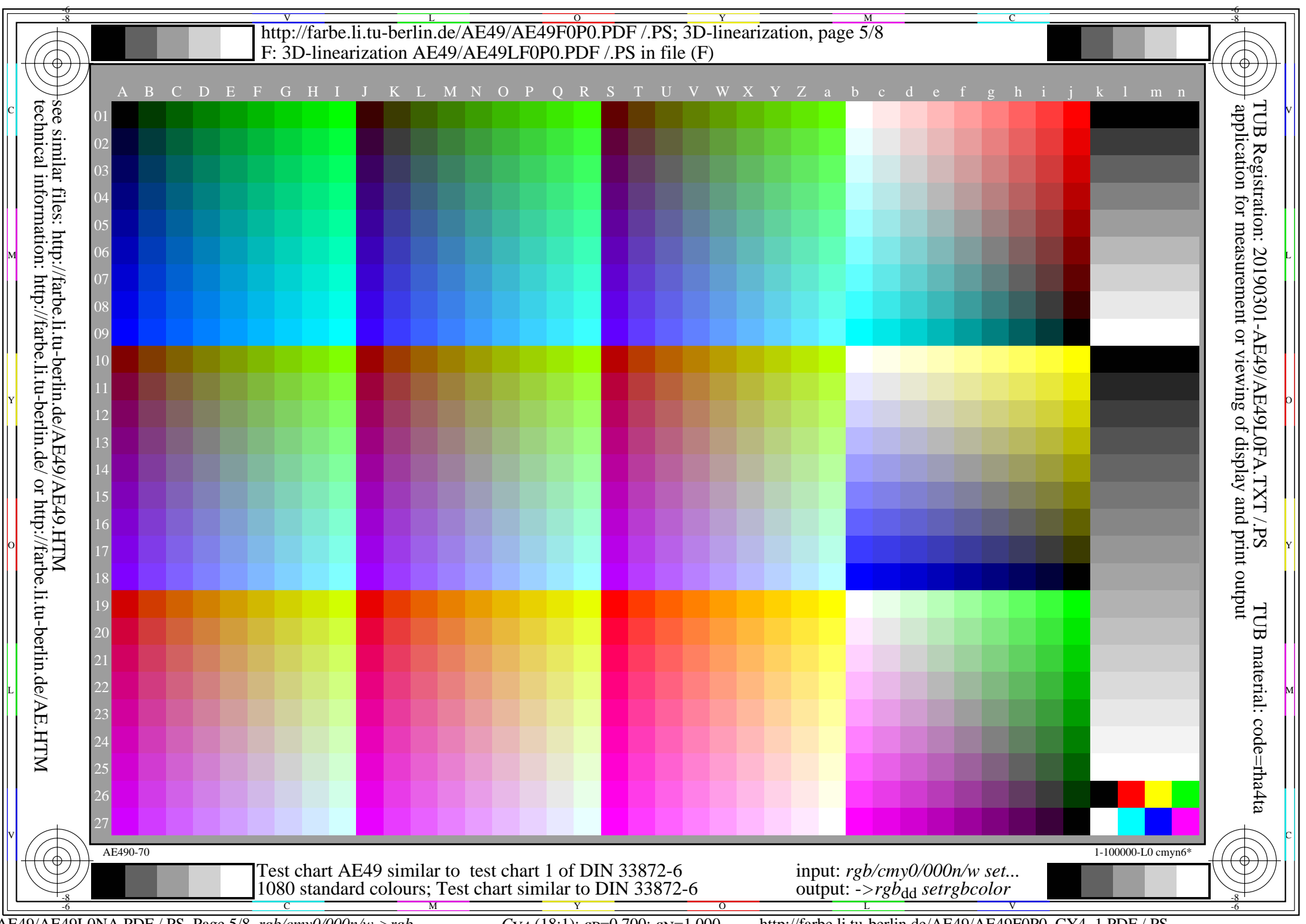
TUB Registration: 20190301-AE49/AE49L0FA.TXT/.PS  
application for measurement or viewing of display and print output  
TUB material: code=rhata



AE490-70 1-100000-L0 cmyn6\*

Test chart AE49 similar to test chart 1 of DIN 33872-6  
1080 standard colours; Test chart similar to DIN 33872-6

input: *rgb/cmy0/000n/w set...*  
output: *->rgb<sub>dd</sub> setrgbcolor*



see similar files: <http://farbe.li.tu-berlin.de/AE49/AE49L0FA.TXT/.PS>  
technical information: <http://farbe.li.tu-berlin.de/AE49/HTM> or <http://farbe.li.tu-berlin.de/AE.HTM>

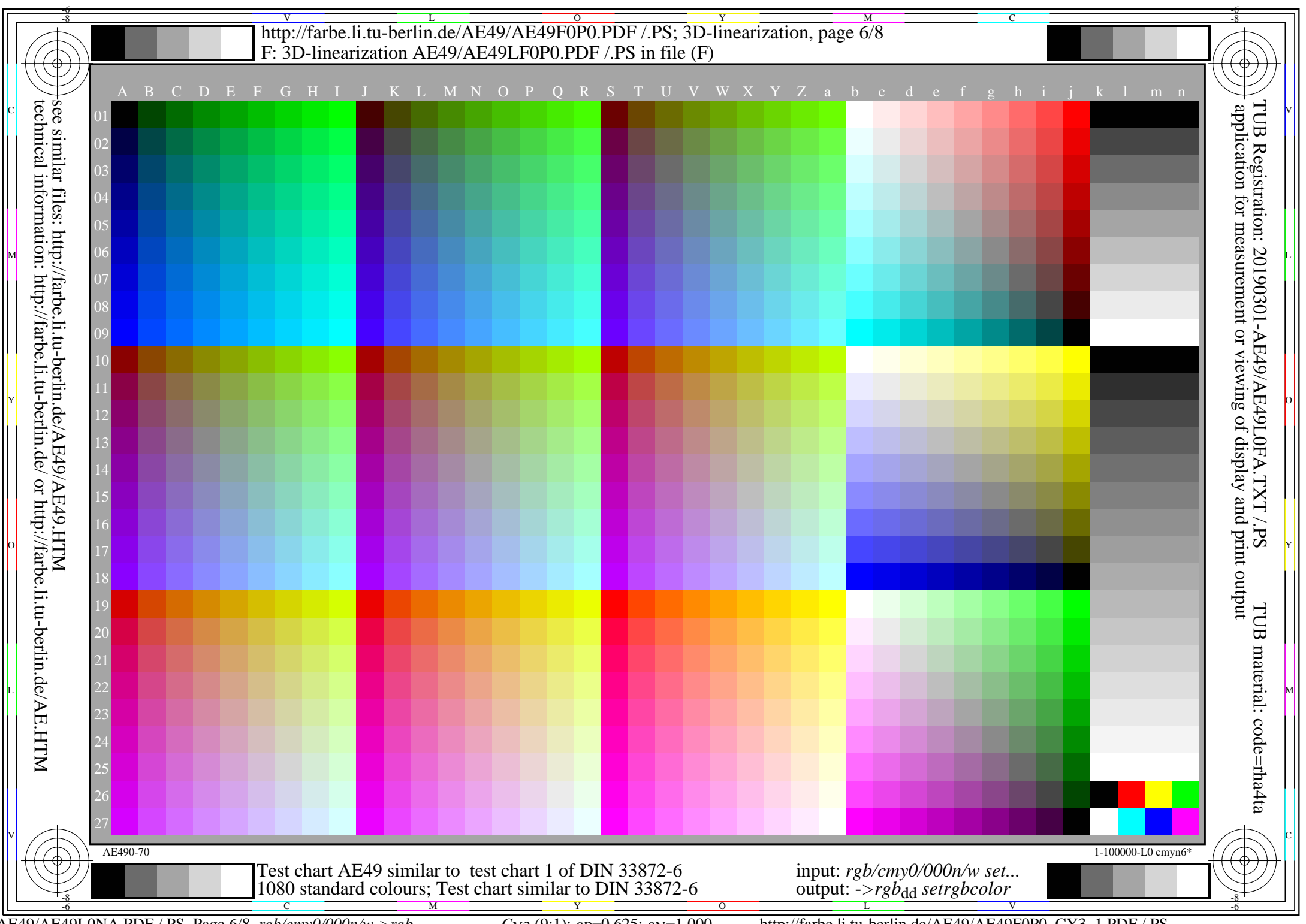
TUB Registration: 20190301-AE49/AE49L0FA.TXT/.PS  
application for measurement or viewing of display and print output  
TUB material: code=rhata

AE490-70

1-100000-L0 cmyn6\*

Test chart AE49 similar to test chart 1 of DIN 33872-6  
1080 standard colours; Test chart similar to DIN 33872-6

input: *rgb/cmy0/000n/w set...*  
output: *->rgb<sub>dd</sub> setrgbcolor*



see similar files: <http://farbe.li.tu-berlin.de/AE49/AE49L0FA.TXT> / .PS  
technical information: <http://farbe.li.tu-berlin.de/AE49/AE49L0FA.TXT> / .PS  
or <http://farbe.li.tu-berlin.de/AE49/AE49L0FA.TXT> / .PS

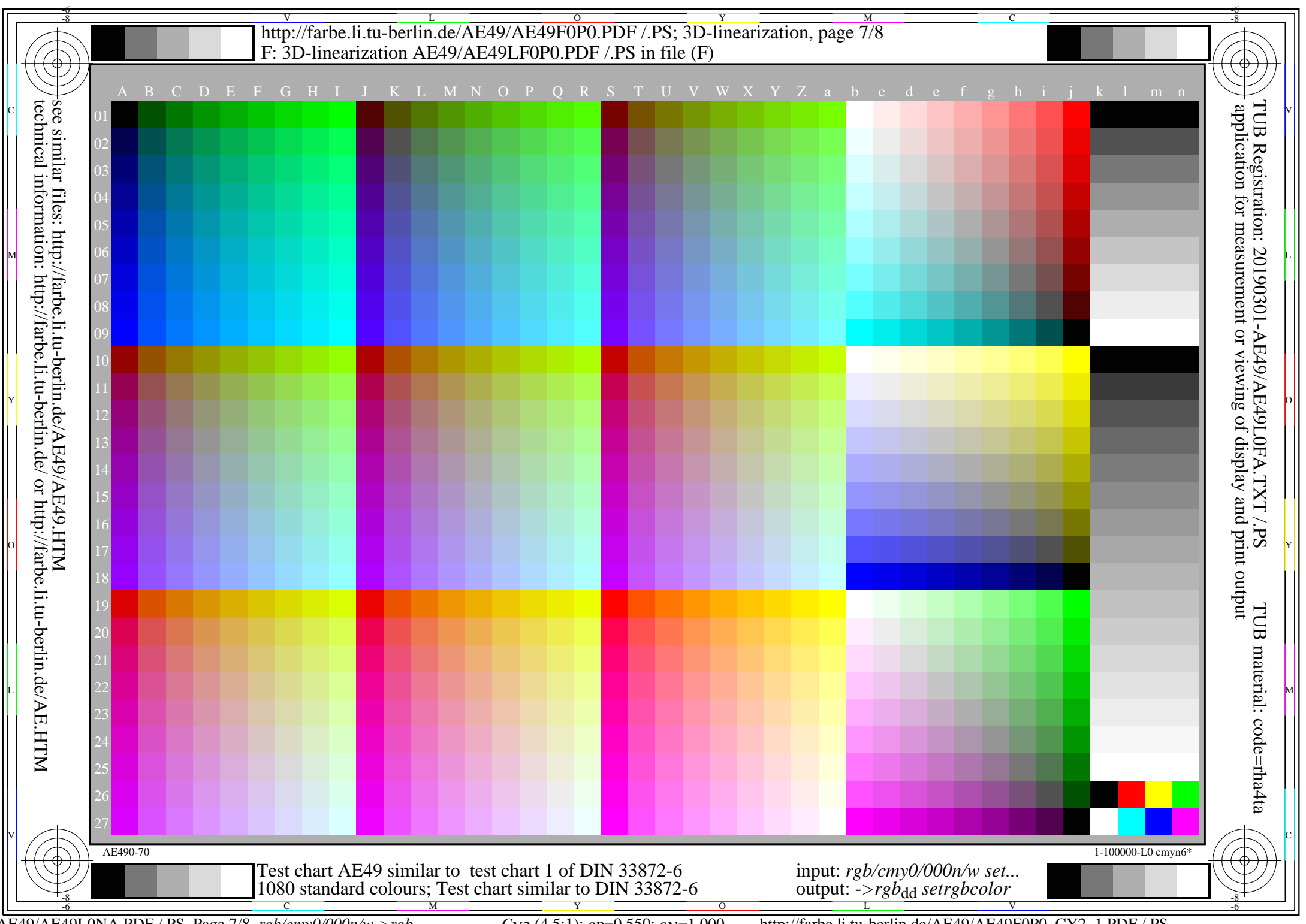
TUB Registration: 20190301-AE49/AE49L0FA.TXT / .PS  
application for measurement or viewing of display and print output  
TUB material: code=rhata

AE490-70

1-100000-L0 cmyn6\*

Test chart AE49 similar to test chart 1 of DIN 33872-6  
1080 standard colours; Test chart similar to DIN 33872-6

input: *rgb/cmy0/000n/w set...*  
output: *->rgb<sub>dd</sub> setrgbcolor*



see similar files: <http://farbe.li.tu-berlin.de/AE49/AE49L0FA.TXT> / .PS  
technical information: <http://farbe.li.tu-berlin.de/AE49/AE49.HTM>

TUB Registration: 20190301-AE49/AE49L0FA.TXT / .PS  
application for measurement or viewing of display and print output  
TUB material: code=rh4ta

AE490-70

1-100000-L0 cmyn6\*

Test chart AE49 similar to test chart 1 of DIN 33872-6  
1080 standard colours; Test chart similar to DIN 33872-6

input: *rgb/cmy0/000n/w set...*  
output: *->rgb<sub>dd</sub> setrgbcolor*

