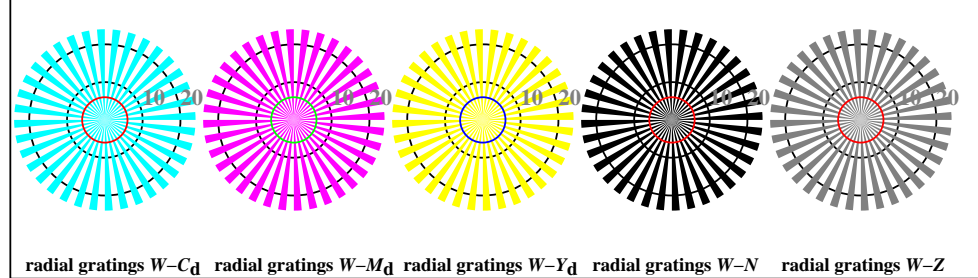
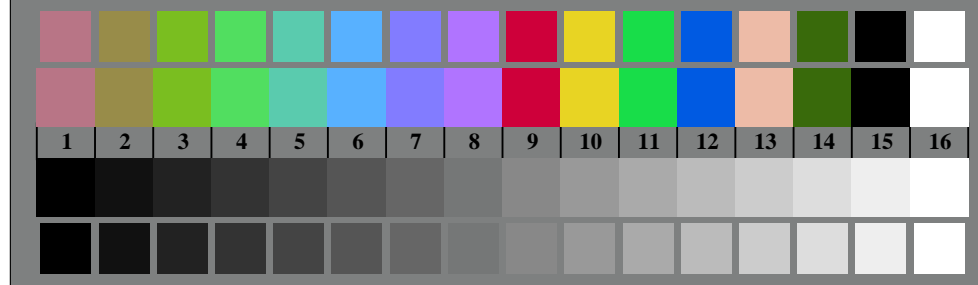




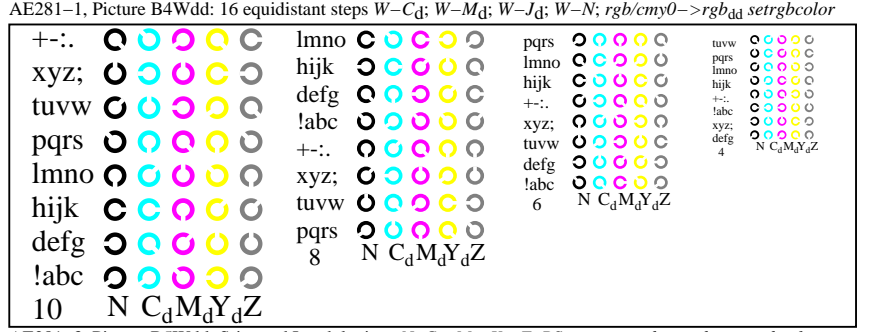
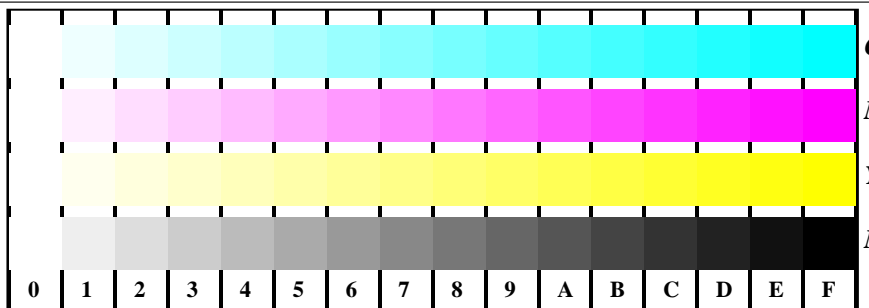
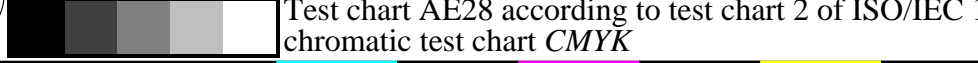
AE280-3, Picture B1Wdd: Flower motif, 14 CIE-test colours and 2 + 16 grey steps (nf); PS operators *settransfer*, 3 *colorimage*



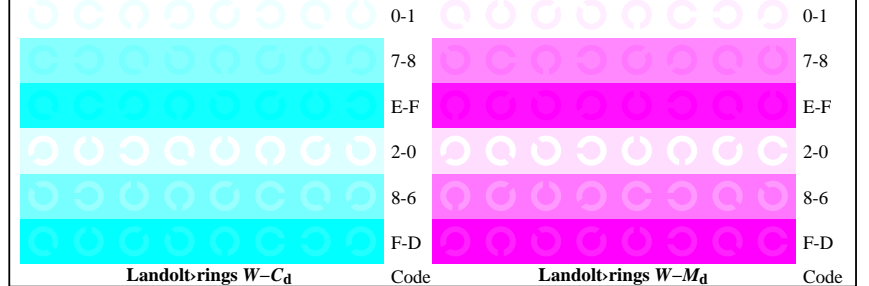
AE280-5, Picture B2Wdd: radial gratings W-C<sub>d</sub>; W-M<sub>d</sub>; W-Y<sub>d</sub>; W-N; PS operator *rgb->rgb<sub>dd</sub> setrgbcolor*



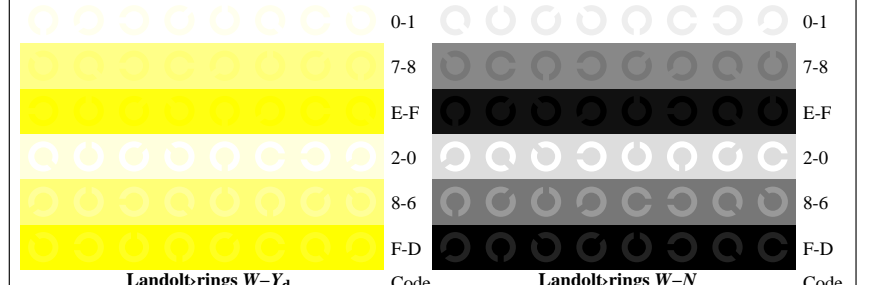
AE280-7, Picture B3Wdd: 14 CIE-test colours and 2 + 16 grey steps (sf); *rgb/cmy0->rgb<sub>dd</sub> setrgbcolor*



AE281-1, Picture B4Wdd: 16 equidistant steps W-C<sub>d</sub>; W-M<sub>d</sub>; W-Y<sub>d</sub>; W-N; *rgb/cmy0->rgb<sub>dd</sub> setrgbcolor*



AE281-3, Picture B5Wdd: Sript and Landolt-rings N; C<sub>d</sub>; M<sub>d</sub>; Y<sub>d</sub>; Z; PS operator *rgb->rgb<sub>dd</sub> setrgbcolor*



AE281-5, Picture B6Wdd: Landolt-rings W-C<sub>d</sub>; W-M<sub>d</sub>; PS operator *rgb->rgb<sub>dd</sub> setrgbcolor*



AE281-7, Picture B7Wdd: Landolt-rings W-Y<sub>d</sub>; W-N; PS operator *rgb->rgb<sub>dd</sub> setrgbcolor*

see similar files: <http://farbe.li.tu-berlin.de/AE28/AE28L1NP.PDF> / .PS  
 technical information: <http://farbe.li.tu-berlin.de/> or <http://farbe.li.tu-berlin.de/AE.HTM>

TUB Registration: 20191001-AE28/AE28L1NP.PDF / .PS  
 application for measurement or viewing of the output on display and print  
 TUB material: code=rh4ta

input: *rgb/cmy0/000n/w set...*  
 output: *->rgb<sub>dd</sub> setrgbcolor*