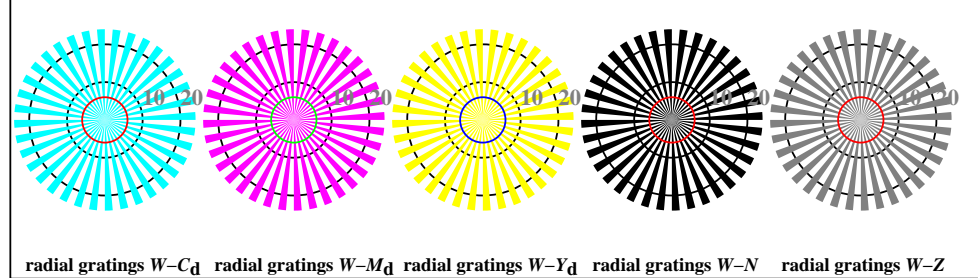
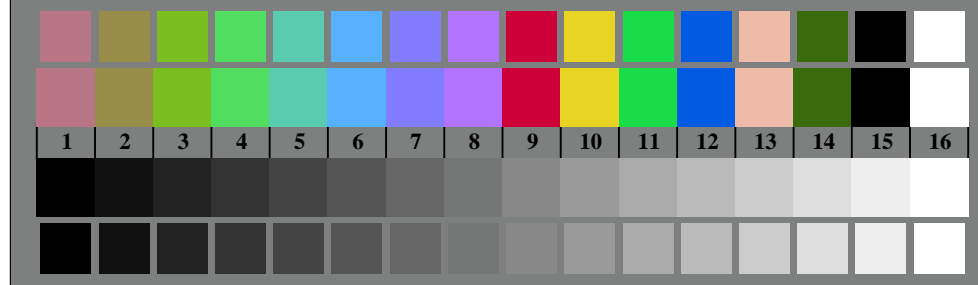




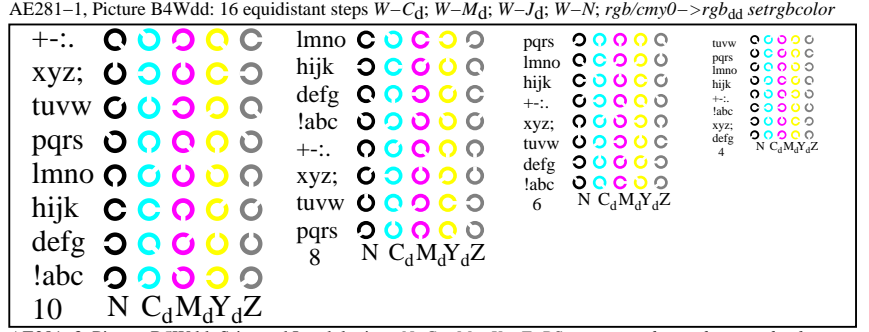
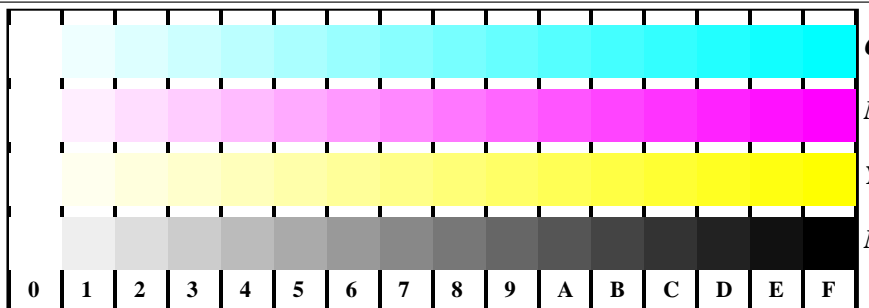
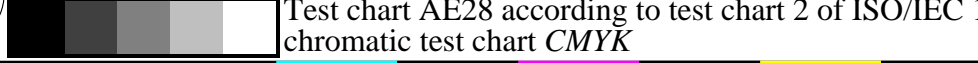
AE280-3, Picture B1Wdd: Flower motif, 14 CIE-test colours and 2 + 16 grey steps (nf); PS operators *settransfer*, 3 *colorimage*



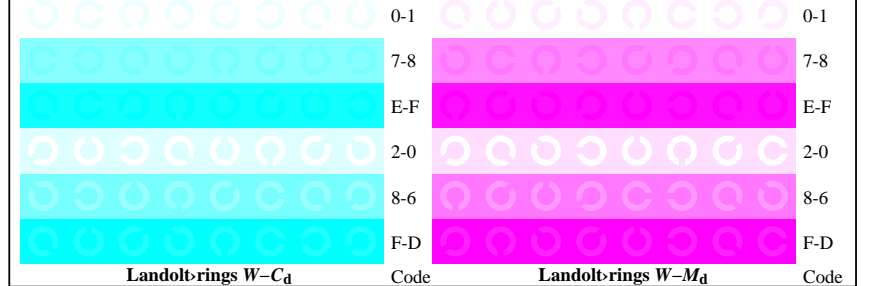
AE280-5, Picture B2Wdd: radial gratings W-C_d; W-M_d; W-Y_d; W-N; PS operator *rgb->rgb_{dd} setrgbcolor*



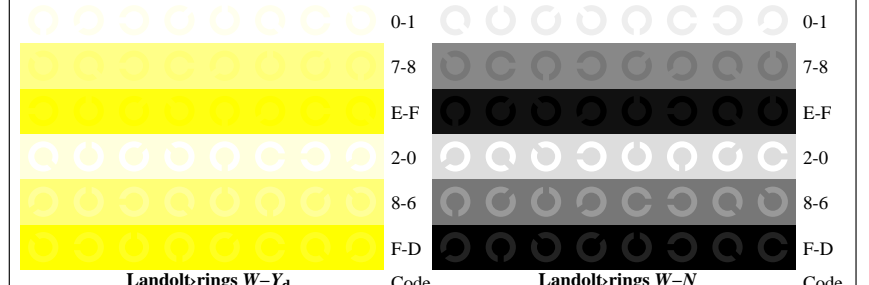
AE280-7, Picture B3Wdd: 14 CIE-test colours and 2 + 16 grey steps (sf); *rgb/cmy0->rgb_{dd} setrgbcolor*



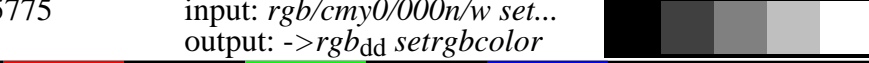
AE281-3, Picture B5Wdd: Sript and Landolt-rings N; C_d; M_d; Y_d; Z; PS operator *rgb->rgb_{dd} setrgbcolor*



AE281-5, Picture B6Wdd: Landolt-rings W-C_d; W-M_d; PS operator *rgb->rgb_{dd} setrgbcolor*



AE281-7, Picture B7Wdd: Landolt-rings W-Y_d; W-N; PS operator *rgb->rgb_{dd} setrgbcolor*



see similar files: <http://farbe.li.tu-berlin.de/AE28/AE28L0NA.TXT> / .PS
 technical information: <http://farbe.li.tu-berlin.de/> or <http://farbe.li.tu-berlin.de/AE.HTM>

TUB Registration: 20191001-AE28/AE28L0NA.TXT /.PS TUB material: code=rh4ta
 application for measurement or viewing of the output on display and print