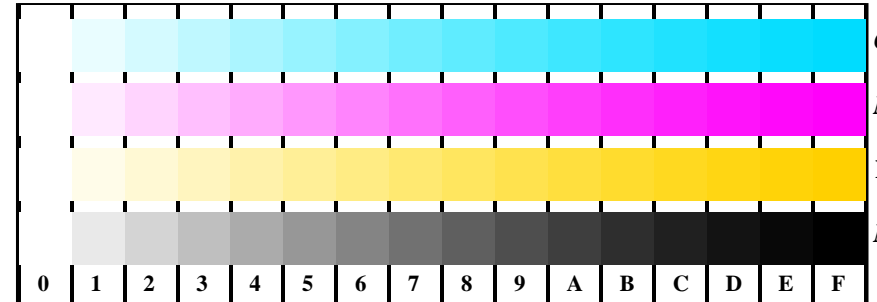
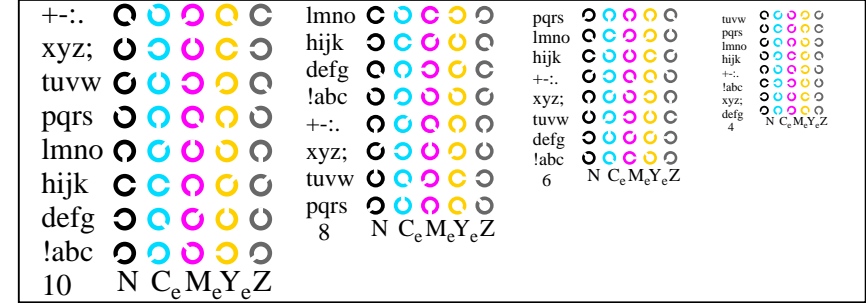


see similar files: <http://farbe.li.tu-berlin.de/AE26/AE26.HTM>
 technical information: <http://farbe.li.tu-berlin.de/> or <http://farbe.li.tu-berlin.de/AE.HTM>

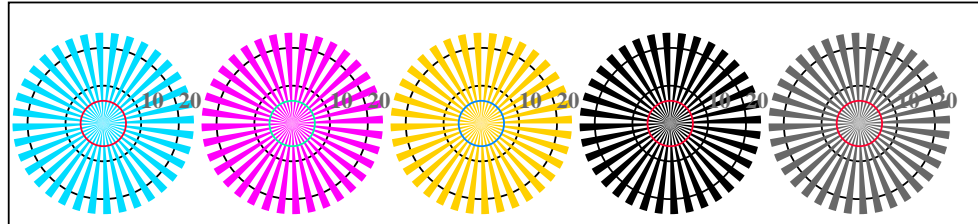
TUB Registration: 20190301-AE26/AE26L0FA.TXT /.PS
 application for measurement or viewing of display and print output
 TUB material: code=thata4ta



AE261-1, Picture B4Wde: 16 equidistant steps W-C_e; W-M_e; W-J_e; W-N; *rgb/cmy0->rgb_{de} setrgbcolor*

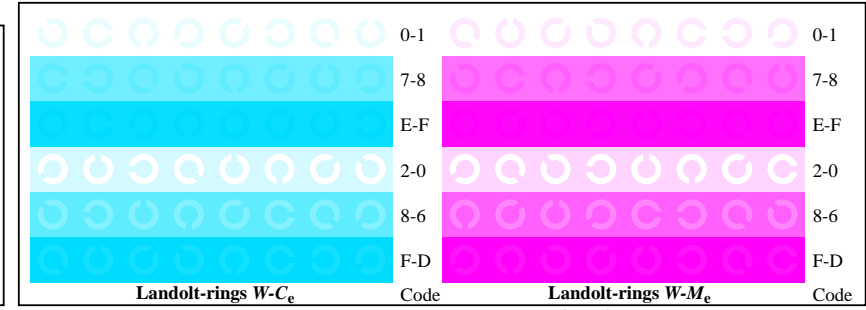


AE261-3, Picture B5Wde: Sript and Landolt-rings N; C_e; M_e; Y_e; Z; PS operator: *rgb->rgb_{de} setrgbcolor*

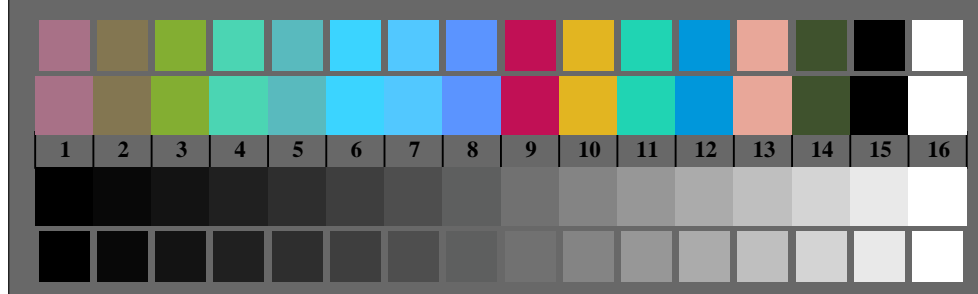


radial gratings W-C_e radial gratings W-M_e radial gratings W-J_e radial gratings W-N radial gratings W-Z

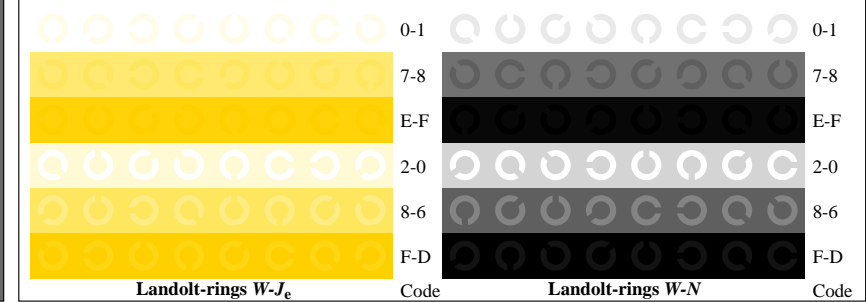
AE260-5, Picture B2Wde: radial gratings W-C_e; W-M_e; W-J_e; W-N; PS operator: *rgb->rgb_{de} setrgbcolor*



AE261-5, Picture B6Wde: Landolt-rings W-C_e; W-M_e; PS operator: *rgb->rgb_{de} setrgbcolor*



AE260-7, Picture B3Wde: 14 CIE-test colours and 2 + 16 grey steps (sf); *rgb/cmy0->rgb_{de} setrgbcolor*



AE261-7, Picture B7Wde: Landolt-rings W-J_e; W-N; PS operator: *rgb->rgb_{de} setrgbcolor*



Test chart AE26 according to test chart 2 of ISO/IEC 15775
 chromatic test chart CMYK

input: *rgb/cmy0/000n/w set...*
 output: *->rgb_{de} setrgbcolor*

