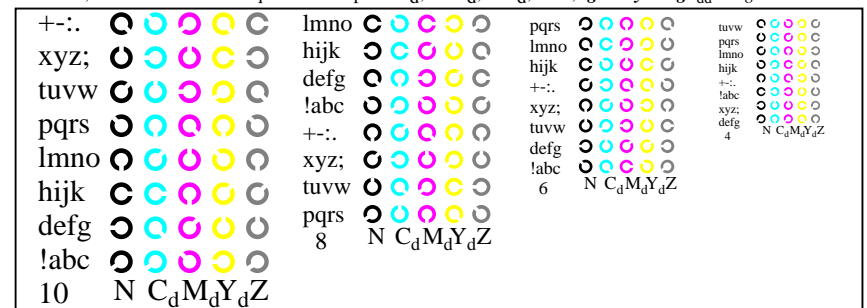
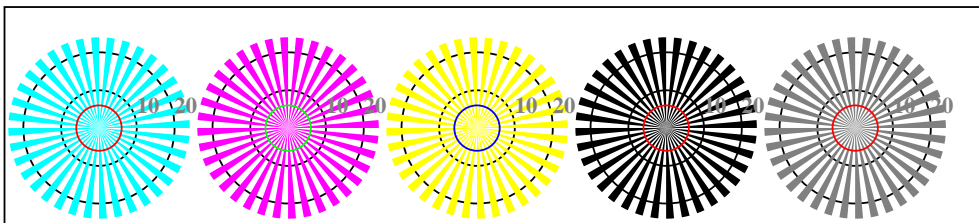


AE261-1, Picture B4Wdd: 16 equidistant steps  $W-C_d$ ;  $W-M_d$ ;  $W-Y_d$ ;  $W-N$ ;  $rgb/cmy0 \rightarrow rgb_{dd}$  setrgbcolor

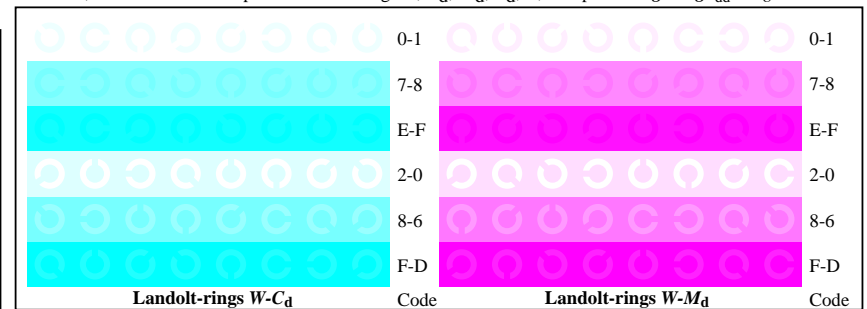


AE261-3, Picture B5Wdd: Sript and Landolt-rings  $N$ ;  $C_d$ ;  $M_d$ ;  $Y_d$ ;  $Z$ ;  $PS$  operator:  $rgb \rightarrow rgb_{dd}$  setrgbcolor

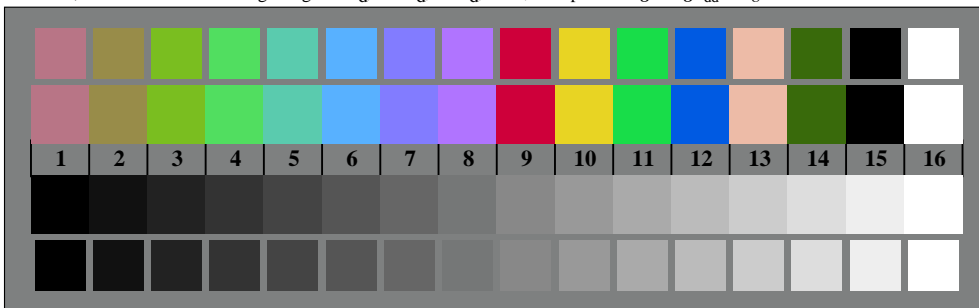


radial gratings  $W-C_d$  radial gratings  $W-M_d$  radial gratings  $W-Y_d$  radial gratings  $W-N$  radial gratings  $W-Z$

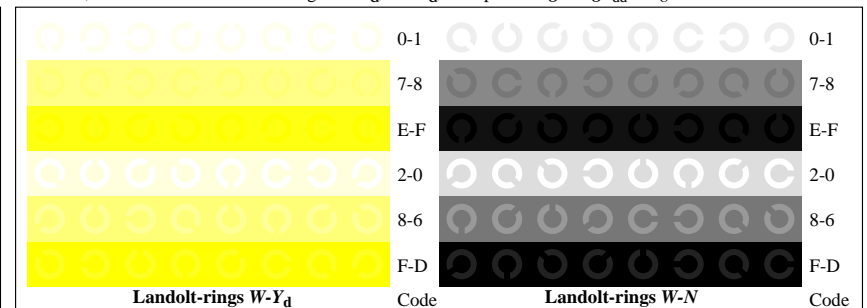
AE260-5, Picture B2Wdd: radial gratings  $W-C_d$ ;  $W-M_d$ ;  $W-Y_d$ ;  $W-N$ ;  $PS$  operator:  $rgb \rightarrow rgb_{dd}$  setrgbcolor



AE261-5, Picture B6Wdd: Landolt-rings  $W-C_d$ ;  $W-M_d$ ;  $PS$  operator:  $rgb \rightarrow rgb_{dd}$  setrgbcolor



AE260-7, Picture B3Wdd: 14 CIE-test colours and 2 + 16 grey steps (sf);  $rgb/cmy0 \rightarrow rgb_{dd}$  setrgbcolor



AE261-7, Picture B7Wdd: Landolt-rings  $W-Y_d$ ;  $W-N$ ;  $PS$  operator:  $rgb \rightarrow rgb_{dd}$  setrgbcolor