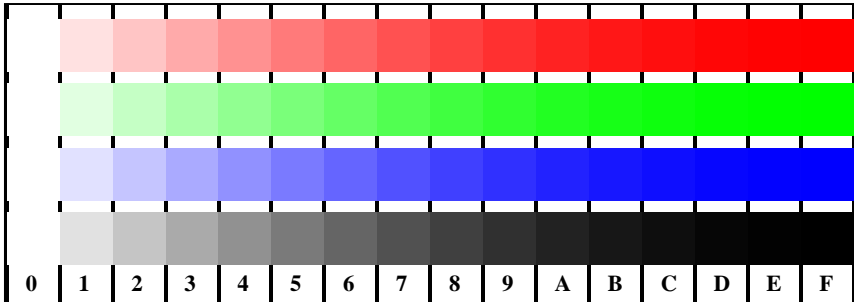
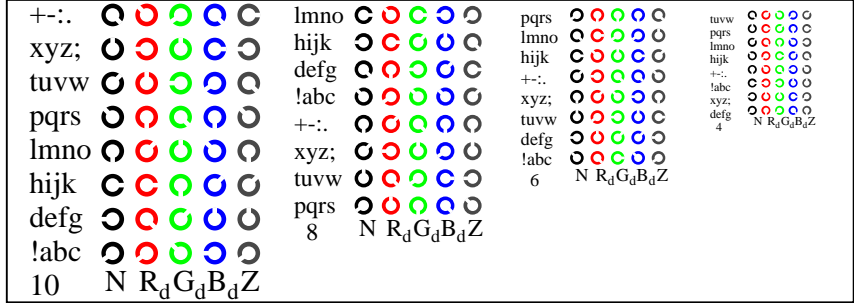


see similar files: <http://farbe.li.tu-berlin.de/AE19/AE19.HTM>
 technical information: <http://farbe.li.tu-berlin.de/> or <http://farbe.li.tu-berlin.de/AE.HTM>

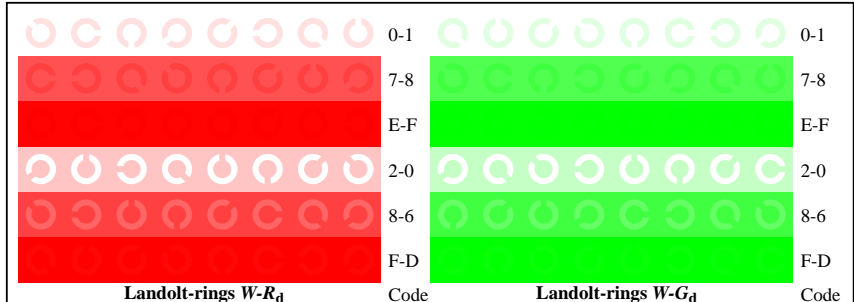
TUB Registration: 20190301-AE19/AE19L0FA.TXT /.PS
 application for measurement or viewing of display and print output
 TUB material: code=thata



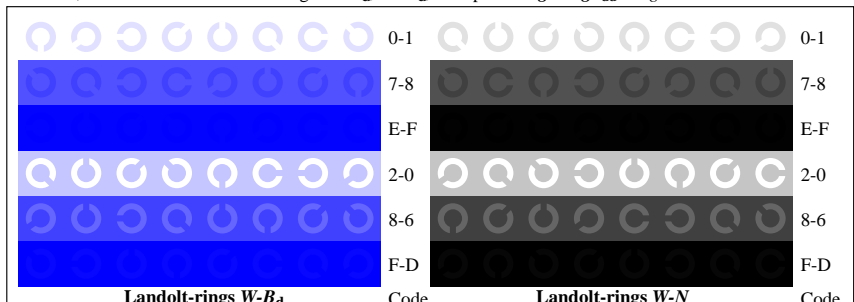
AE191-1, Picture D4Wdd: 16 equidistant steps W-R_d; R_d; G_d; W-B_d; W-N; *rgb/cmy0->rgb_{dd} setrgbcolor*



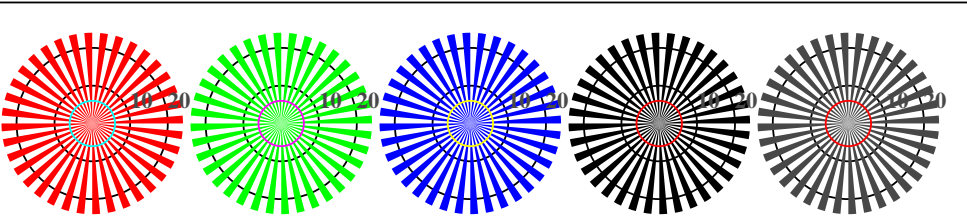
AE191-3, Picture D5Wdd: Sript and Landolt-rings N; R_d; G_d; B_d; Z; PS operator: *rgb->rgb_{dd} setrgbcolor*



AE191-5, Picture D6Wdd: Landolt-rings W-R_d; W-G_d; PS operator: *rgb->rgb_{dd} setrgbcolor*



AE191-7, Picture D7Wdd: Landolt-rings W-B_d; W-N; PS operator: *rgb->rgb_{dd} setrgbcolor*



AE190-5, Picture D2Wdd: radial gratings W-R_d; W-G_d; W-B_d; W-N; PS operator: *rgb->rgb_{dd} setrgbcolor*



AE190-7, Picture D3Wdd: 14 CIE-test colours and 2 + 16 grey steps (sf); *rgb/cmy0->rgb_{dd} setrgbcolor*



Test chart AE19 according to test chart 4 of ISO/IEC 15775
 chromatic test chart RGB

input: *rgb/cmy0/000n/w set...*
 output: *->rgb_{dd} setrgbcolor*