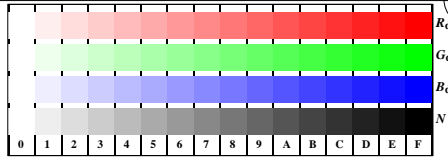


see similar files: http://farbe.li.tu-berlin.de/AE16/AE16.HTM  
 technical information: http://farbe.li.tu-berlin.de/ or http://farbe.li.tu-berlin.de/AE.HTM

TUB Registration: 20190301-AE16/AE16L0N1.TXT /PS  
 application for measurement or viewing of display and print output

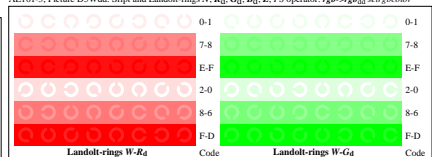
TUB material: code=rhafa



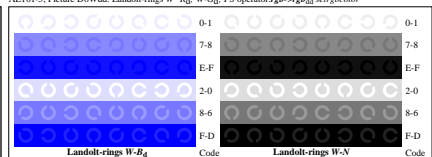
AE161-1, Picture D4Wdd: 16 equidistant steps W-R<sub>d</sub>; W-G<sub>d</sub>; W-B<sub>d</sub>; W-N; *rgb/cmYb->rgb<sub>dd</sub> setrgbcolor*



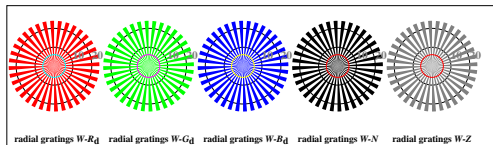
AE161-3, Picture D5Wdd: Sript and Landolt-rings N; R<sub>d</sub>; G<sub>d</sub>; B<sub>d</sub>; Z; *PS operator: rgb->rgb<sub>dd</sub> setrgbcolor*



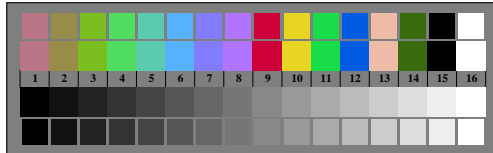
AE161-5, Picture D6Wdd: Landolt-rings W-R<sub>d</sub>; W-G<sub>d</sub>; *PS operator:rgb->rgb<sub>dd</sub> setrgbcolor*



AE161-7, Picture D7Wdd: Landolt-rings W-B<sub>d</sub>; W-N; *PS operator:rgb->rgb<sub>dd</sub> setrgbcolor*



AE160-5, Picture D2Wdd: radial gratings W-R<sub>d</sub>; W-G<sub>d</sub>; W-B<sub>d</sub>; W-N; *PS operator: rgb->rgb<sub>dd</sub> setrgbcolor*



AE160-7, Picture D3Wdd: 14 CIE-test colours and 2 + 16 grey steps (sf); *rgb/cmYb->rgb<sub>dd</sub> setrgbcolor*

Test chart AE16 according to test chart 4 of ISO/IEC 15775  
 chromatic test chart RGB

input: *rgb/cmY0/000n/w set...*  
 output: *->rgb<sub>dd</sub> setrgbcolor*

