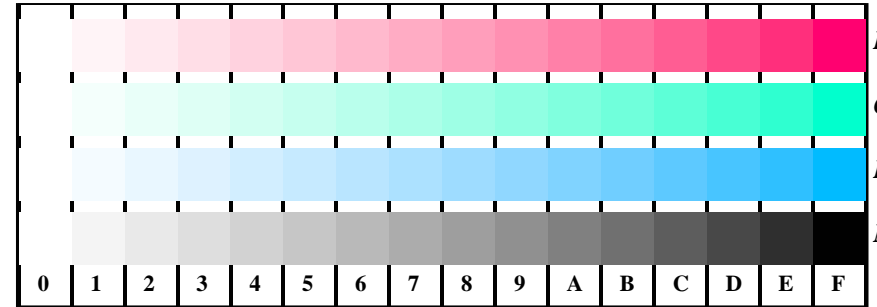
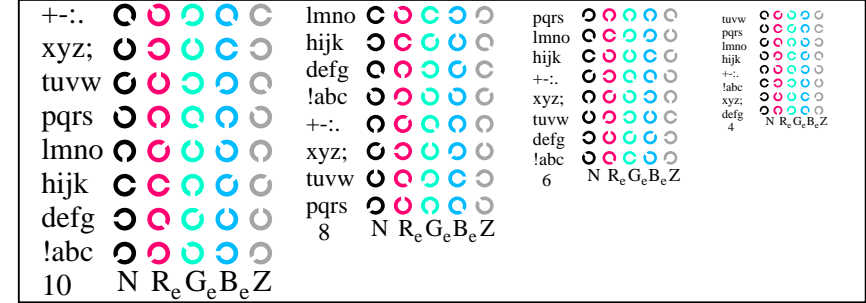


see similar files: <http://farbe.li.tu-berlin.de/AE16/AE16F0PX.PDF>  
 technical information: <http://farbe.li.tu-berlin.de/> or <http://farbe.li.tu-berlin.de/AE16F0PX.PDF>

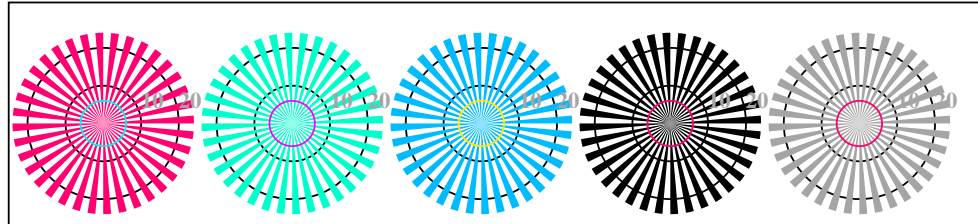
TUB Registration: 20190301-AE16/AE16L0FA.TXT /.PS  
 application for measurement or viewing of display and print output  
 TUB material: code=thata4ta



AE161-1, Picture D4Wde: 16 equidistant steps  $W-R_e$ ;  $R-G_e$ ;  $W-B_e$ ;  $W-N$ ;  $rgb/cmy_0 \rightarrow rgb_{de}$  setrgbcolor

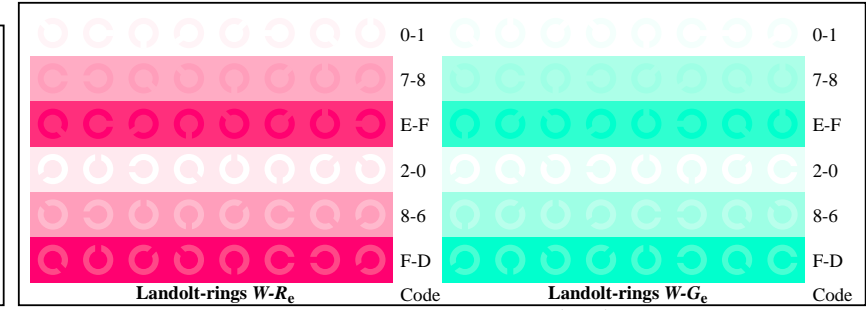


AE161-3, Picture D5Wde: Sript and Landolt-rings  $N$ ;  $R_e$ ;  $G_e$ ;  $B_e$ ;  $Z$ ; PS operator:  $rgb \rightarrow rgb_{de}$  setrgbcolor



radial gratings  $W-R_e$  radial gratings  $W-G_e$  radial gratings  $W-B_e$  radial gratings  $W-N$  radial gratings  $W-Z$

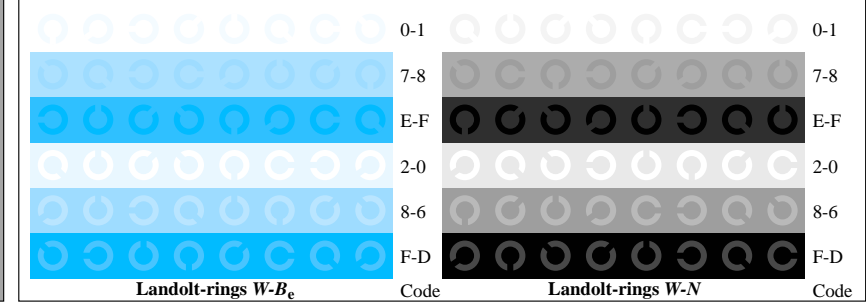
AE160-5, Picture D2Wde: radial gratings  $W-R_e$ ;  $W-G_e$ ;  $W-B_e$ ;  $W-N$ ; PS operator:  $rgb \rightarrow rgb_{de}$  setrgbcolor



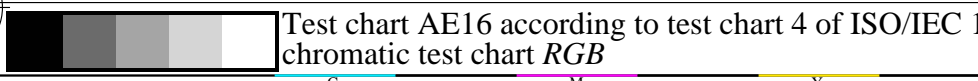
AE161-5, Picture D6Wde: Landolt-rings  $W-R_e$ ;  $W-G_e$ ; PS operator:  $rgb \rightarrow rgb_{de}$  setrgbcolor



AE160-7, Picture D3Wde: 14 CIE-test colours and 2 + 16 grey steps (sf);  $rgb/cmy_0 \rightarrow rgb_{de}$  setrgbcolor



AE161-7, Picture D7Wde: Landolt-rings  $W-B_e$ ;  $W-N$ ; PS operator:  $rgb \rightarrow rgb_{de}$  setrgbcolor



Test chart AE16 according to test chart 4 of ISO/IEC 15775  
 chromatic test chart  $RGB$

input:  $rgb/cmy_0/000n/w$  set...  
 output:  $\rightarrow rgb_{de}$  setrgbcolor