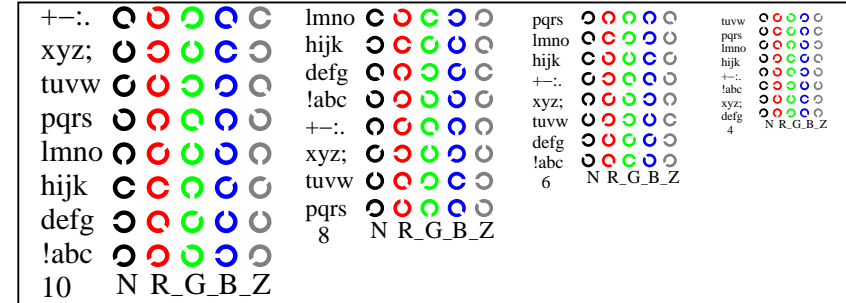
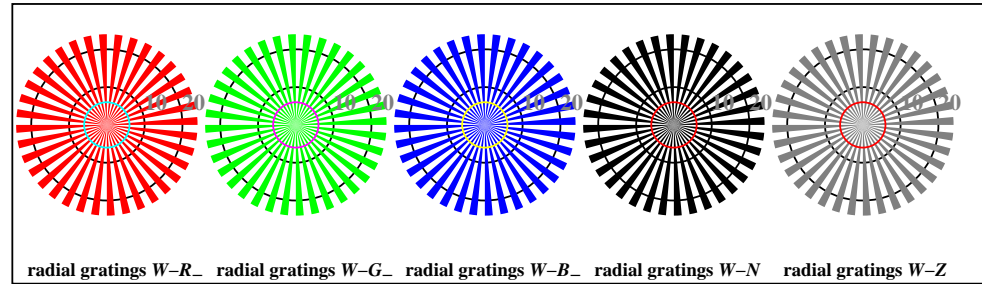


AE101-1, Picture D4W-: 16 equidistant steps W-R₋; W-G₋; W-B₋; W-N; rgb/cmy0 set(rgb/cmyk)color

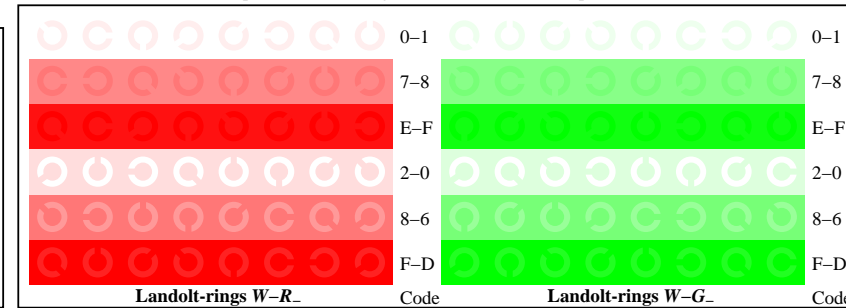


AE101-3, Picture D5W-: Sript and Landolt-rings N; R₋; G₋; B₋; Z; PS operator rgb->rgb_setrgbcolor

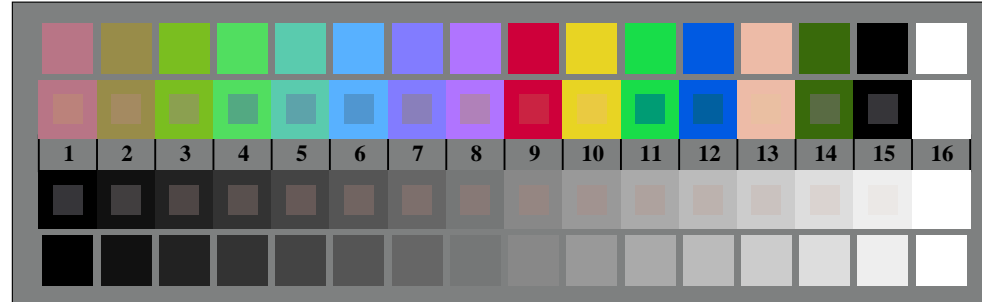
AE100-3, Picture D1W-: Flower motif, 14 CIE-test colours and 2 + 16 grey steps (sf); PS operator 3 colorimage



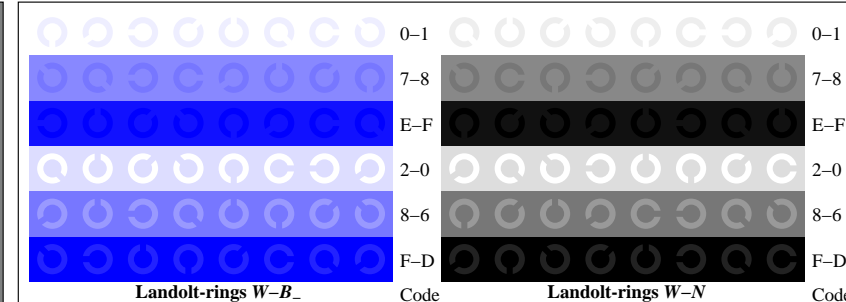
AE100-5, Picture D2W-: radial gratings W-R₋; W-G₋; W-B₋; W-N; PS operator rgb->rgb_setrgbcolor



AE101-5, Picture D6W-: Landolt-rings W-R₋; W-G₋; PS operator rgb_setrgbcolor



AE100-7, Picture D3W-: 14 CIE-test colours and 2 + 16 grey steps (sf); rgb/cmy0 set(rgb/cmyk)color



AE101-7, Picture D7W-: Landolt-rings W-B₋; W-N; PS operator rgb_setrgbcolor