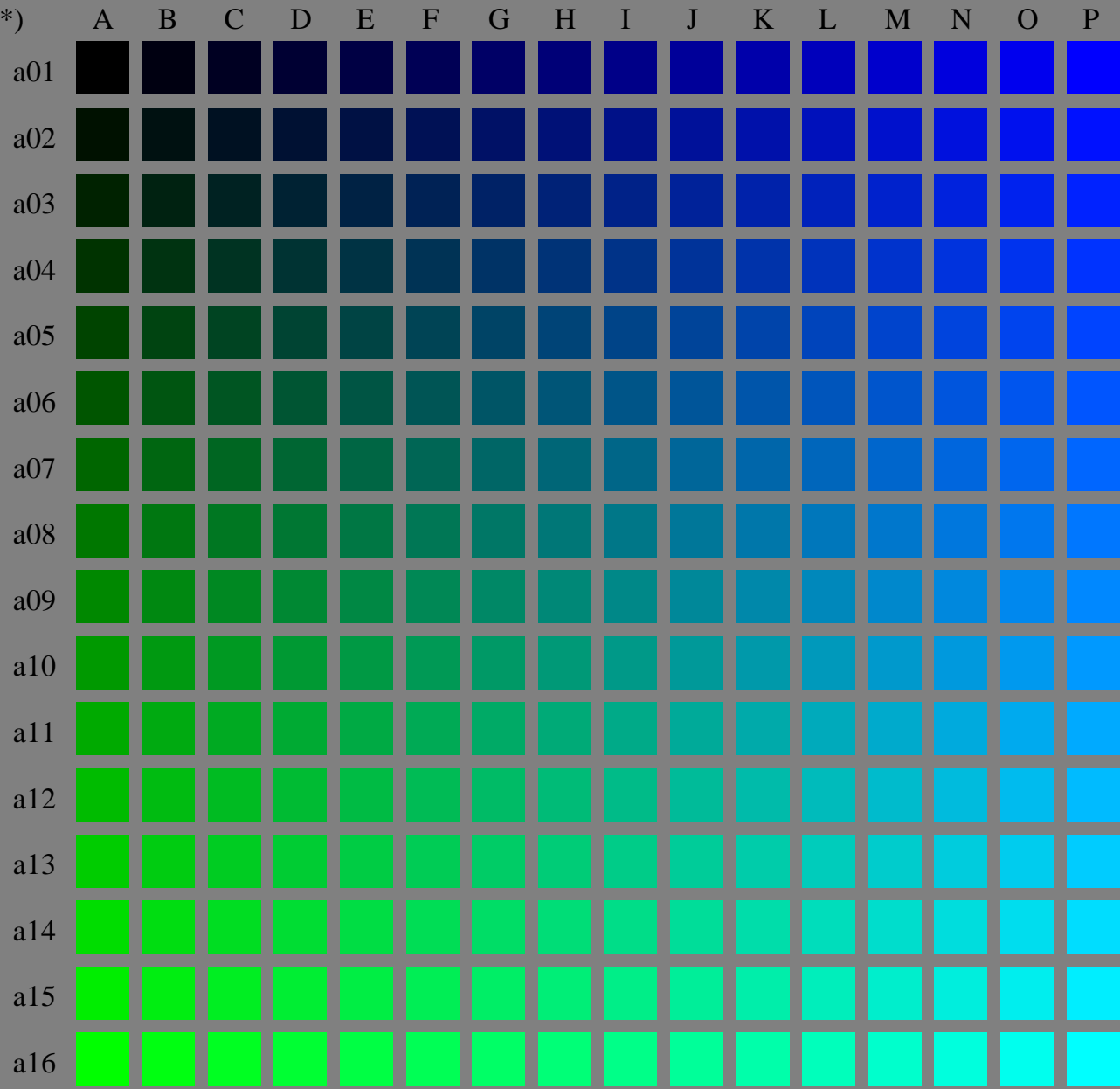


(olv3* = 0.0, l3*, v3*)

(olv3* = 0.0, 0, 1)



(olv3* = 0.0, 1, 0)

LE330-7, Test chart file with 16x16x16 (=4096) colours; Device dependent colour coordinates olv3* of ISO/IEC 15775:1999 as input; r3* = o3* = 0.0 = const.

BAM-test chart no. LE33; Systems ORS18 and TLS00
4096 (=16x16x16) colours of ISO/IEC 15775:1999

input: olv3* setrgbcolor
output: Startup (S) data dependend

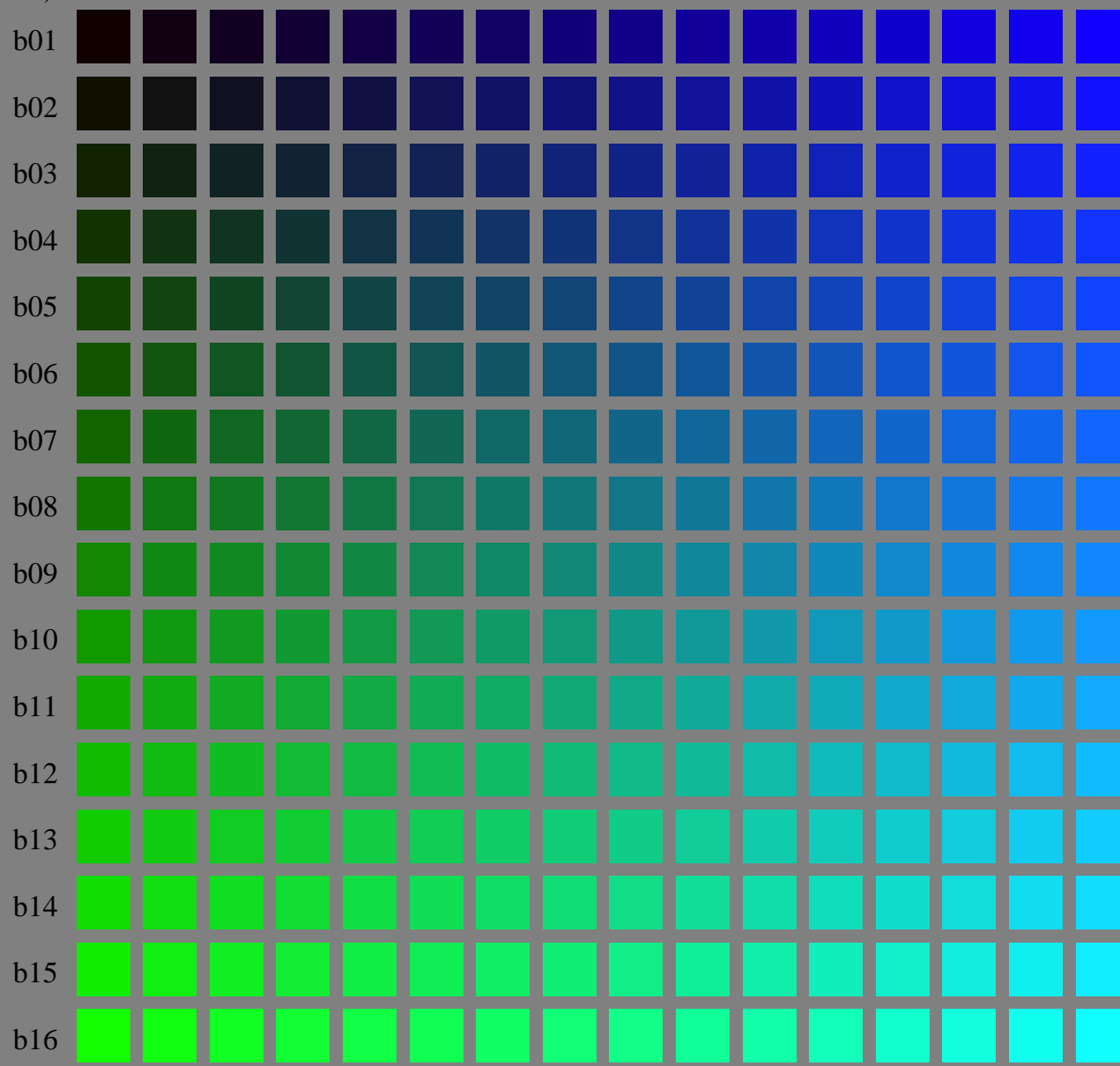
See for similar files: <http://www.ps.bam.de/LE33/>
Technical information: <http://www.ps.bam.de> Version 2.1, io=1,1?

BAM registration: 20050501-LE33/10S/S33E00SP.PS/.PDF
application for measurement of printer systems

BAM material: code=rh4ta
/LE33 Form: 1/16, Serie: 1/1, Page: 1 Page count: 1

($olv3^* = 0.066, l3^*, v3^*$)

($olv3^* = 0.066, 0, 1$)



($olv3^* = 0.066, 1, 0$)

LE330-7, Test chart file with 16x16x16 (=4096) colours; Device dependent colour coordinates $olv3^*$ of ISO/IEC 15775:1999 as input; $r3^* = o3^* = 0.066 = \text{const.}$

BAM-test chart no. LE33; Systems ORS18 and TLS00
4096 (=16x16x16) colours of ISO/IEC 15775:1999

input: $olv3^*$ setrgbcolor
output: Startup (S) data dependend

See for similar files: <http://www.ps.bam.de/LE33/>
Technical information: <http://www.ps.bam.de> Version 2.1, io=1,1?

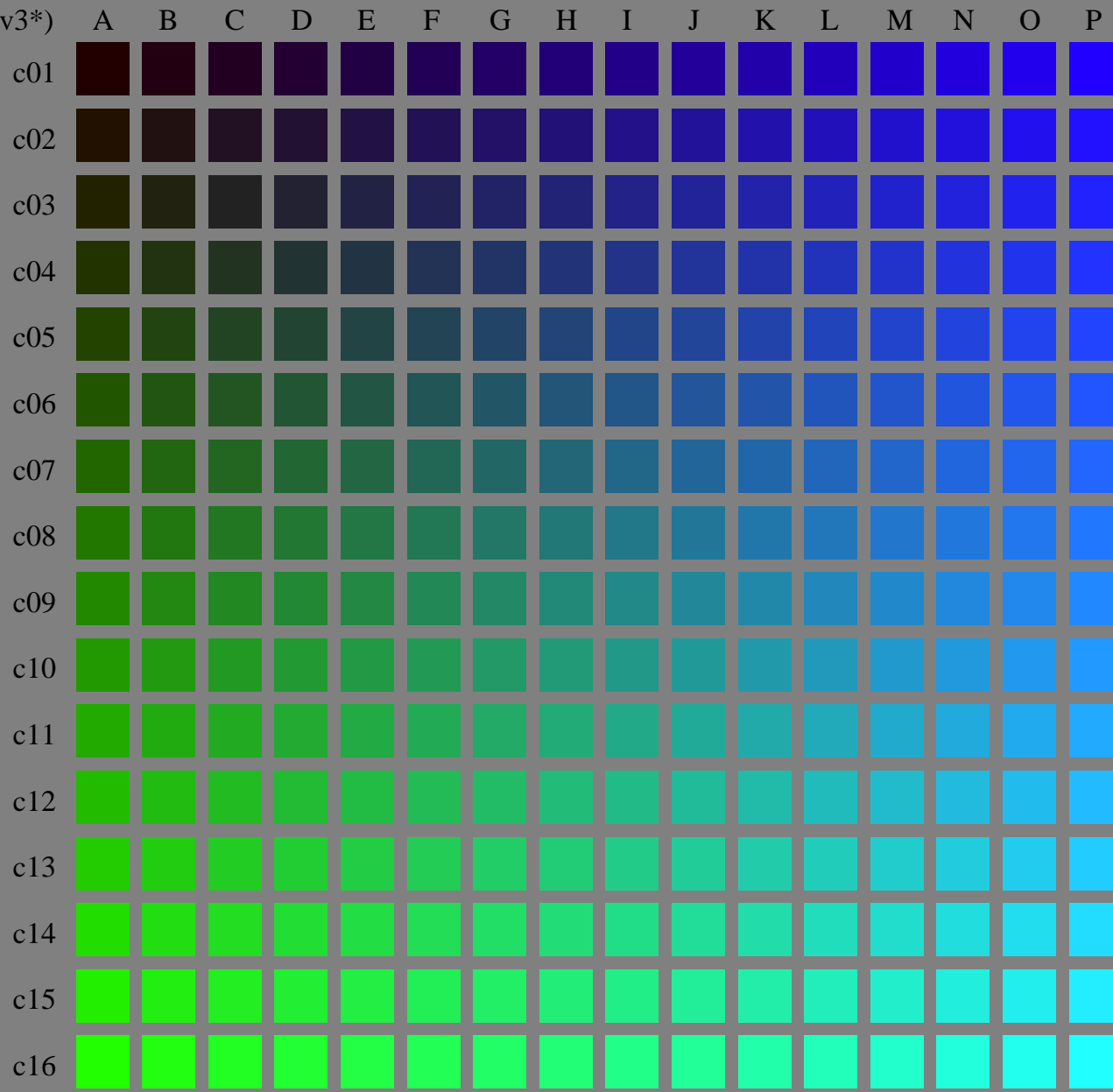
BAM registration: 20050501-LE33/10S/S33E01SP.PS/.PDF
application for measurement of printer systems

LE33 Form: 2/16, Serie: 1/1, Page: 2 Page count: 2

BAM material: code=rh4ta

($olv3^* = 0.133, l3^*, v3^*$)

($olv3^* = 0.133, 0, 1$)



($olv3^* = 0.133, 1, 0$)

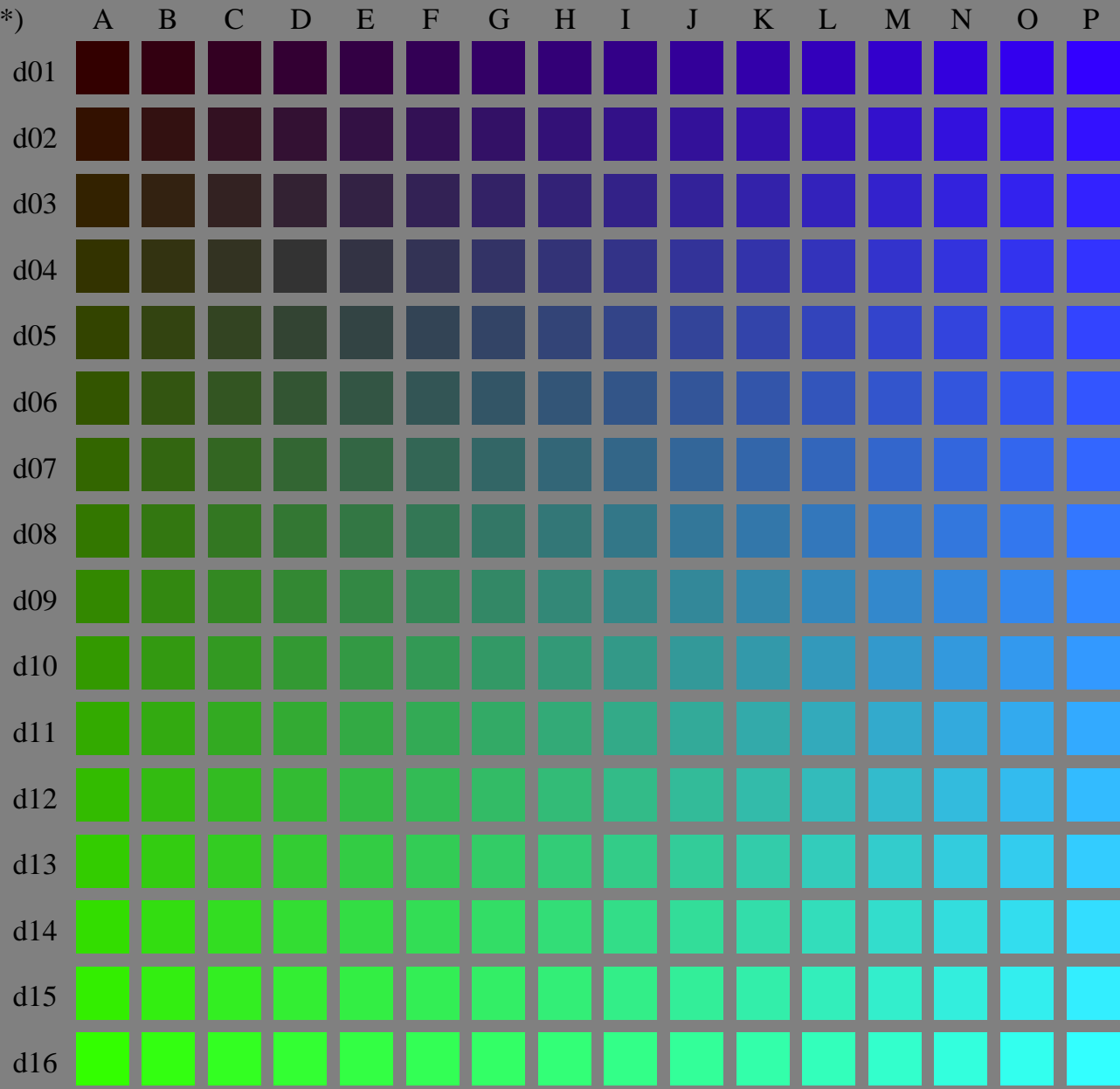
See for similar files: <http://www.ps.bam.de/LE33/>
Technical information: <http://www.ps.bam.de> Version 2.1, io=1,1?

BAM registration: 20050501-LE33/10S/S33E02SP.PS/.PDF
application for measurement of printer systems

BAM material: code=rh4ta
/LE33 Form: 3/16, Serie: 1/1, Page: 3 Page count: 3

($olv3^* = 0.2, l3^*, v3^*$)

($olv3^* = 0.2, 0, 1$)



($olv3^* = 0.2, 1, 0$)

LE330-7, Test chart file with 16x16x16 (=4096) colours; Device dependent colour coordinates $olv3^*$ of ISO/IEC 15775:1999 as input; $r3^* = o3^* = 0.2 = \text{const.}$

BAM-test chart no. LE33; Systems ORS18 and TLS00
4096 (=16x16x16) colours of ISO/IEC 15775:1999

input: $olv3^*$ *setrgbcolor*
output: *Startup (S) data dependend*

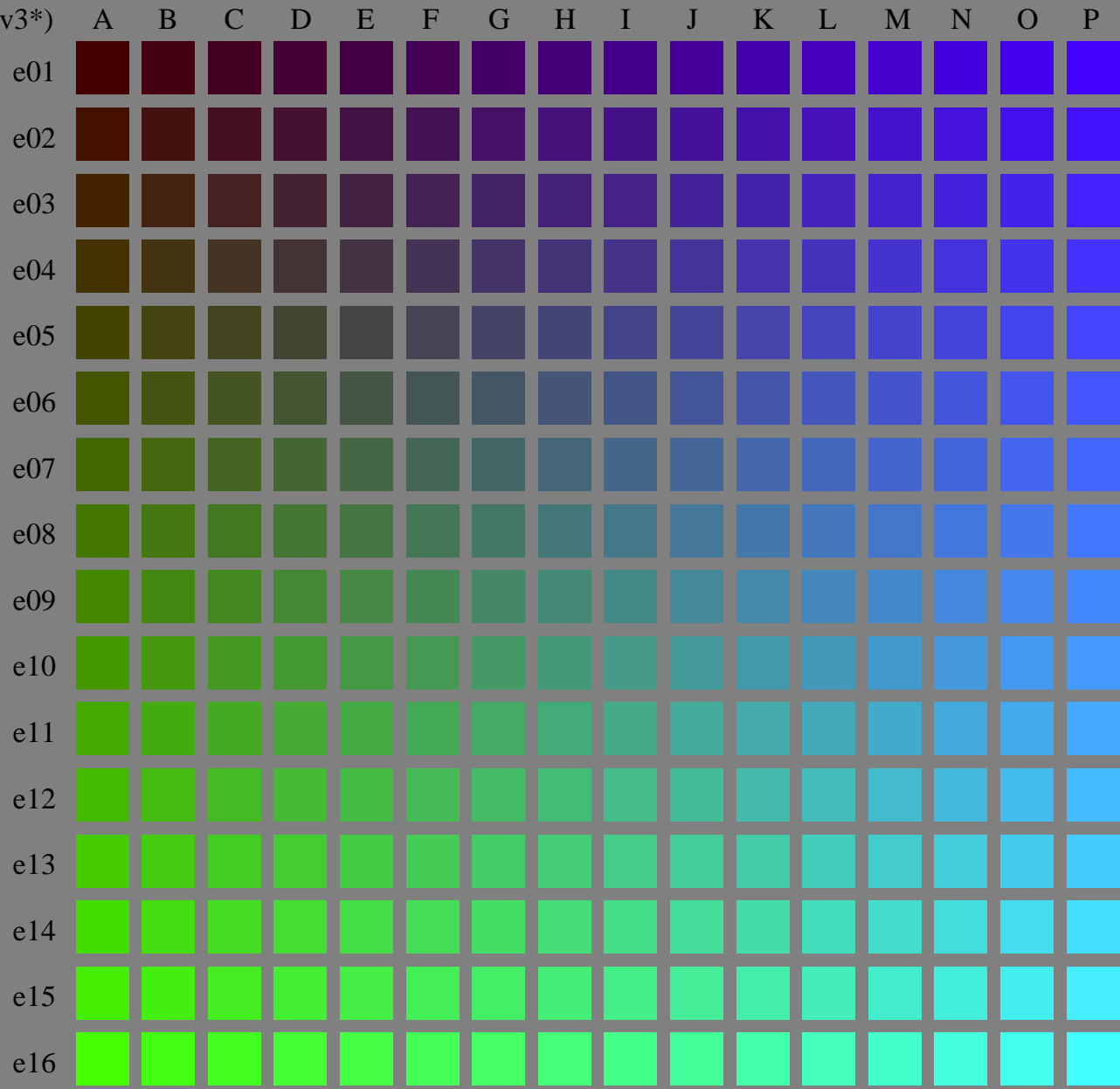
See for similar files: <http://www.ps.bam.de/LE33/>
Technical information: <http://www.ps.bam.de> Version 2.1, io=1,1?

BAM registration: 20050501-LE33/10S/S33E03SP.PS/.PDF
application for measurement of printer systems

BAM material: code=rh4ta
/LE33 Form: 4/16, Serie: 1/1, Page: 4 Page count: 4

($olv3^* = 0.266, l3^*, v3^*$)

($olv3^* = 0.266, 0, 1$)



($olv3^* = 0.266, 1, 0$)

LE330-7, Test chart file with 16x16x16 (=4096) colours; Device dependent colour coordinates $olv3^*$ of ISO/IEC 15775:1999 as input; $r3^* = o3^* = 0.266 = \text{const.}$

BAM-test chart no. LE33; Systems ORS18 and TLS00
4096 (=16x16x16) colours of ISO/IEC 15775:1999

input: $olv3^*$ *setrgbcolor*
output: *Startup (S) data dependend*

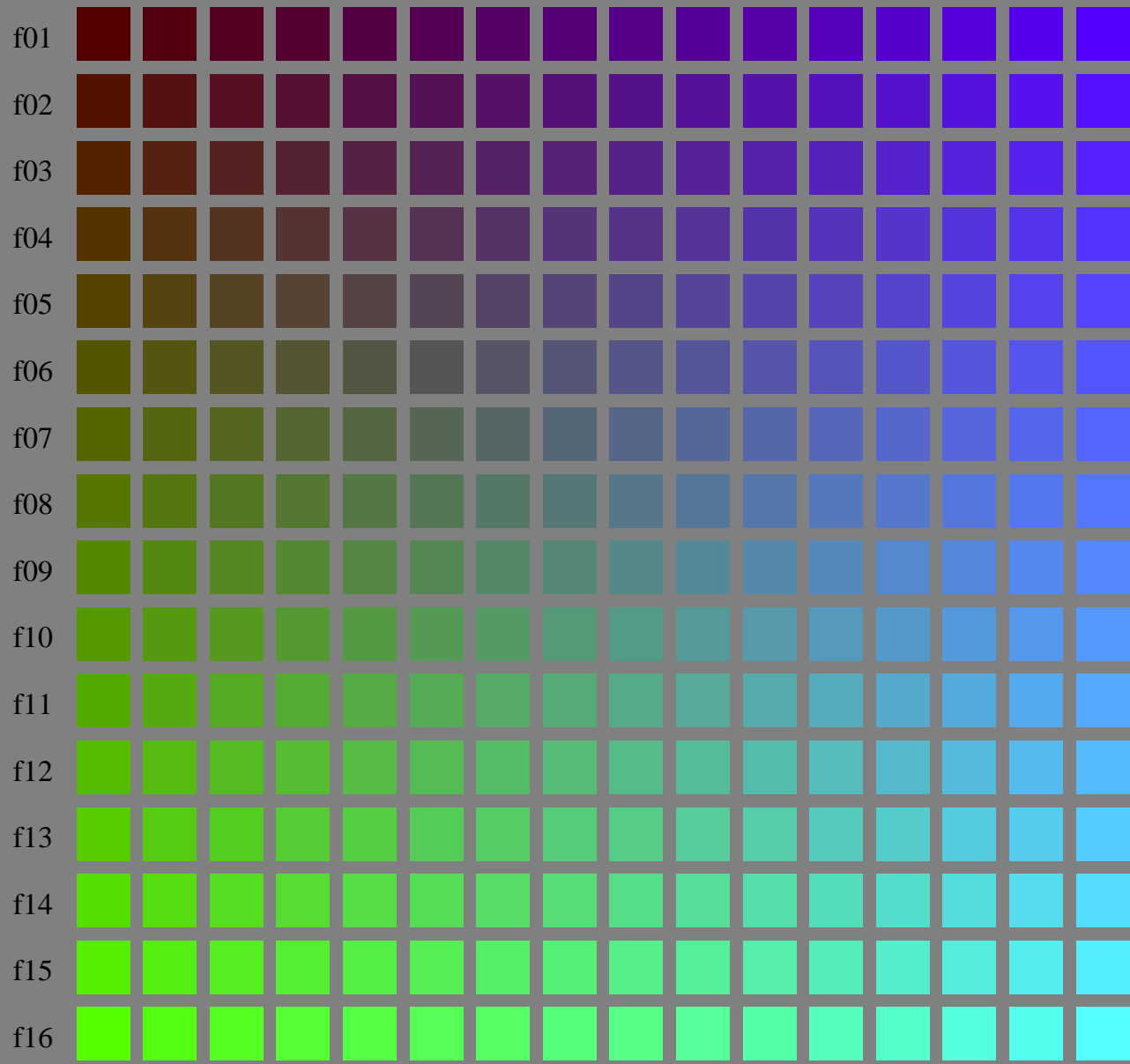
See for similar files: <http://www.ps.bam.de/LE33/>
Technical information: <http://www.ps.bam.de>
Version 2.1, io=1,1?

BAM registration: 20050501-LE33/10S/S33E04SP.PS/.PDF
application for measurement of printer systems

BAM material: code=rh4ta
/LE33 Form: 5/16, Serie: 1/1, Page: 5 Page count: 5

($olv3^* = 0.333, l3^*, v3^*$)

($olv3^* = 0.333, 0, 1$)



($olv3^* = 0.333, 1, 0$)

LE330-7, Test chart file with 16x16x16 (=4096) colours; Device dependent colour coordinates $olv3^*$ of ISO/IEC 15775:1999 as input; $r3^* = o3^* = 0.333 = \text{const.}$

BAM-test chart no. LE33; Systems ORS18 and TLS00
4096 (=16x16x16) colours of ISO/IEC 15775:1999

input: $olv3^*$ *setrgbcolor*
output: *Startup (S) data dependend*

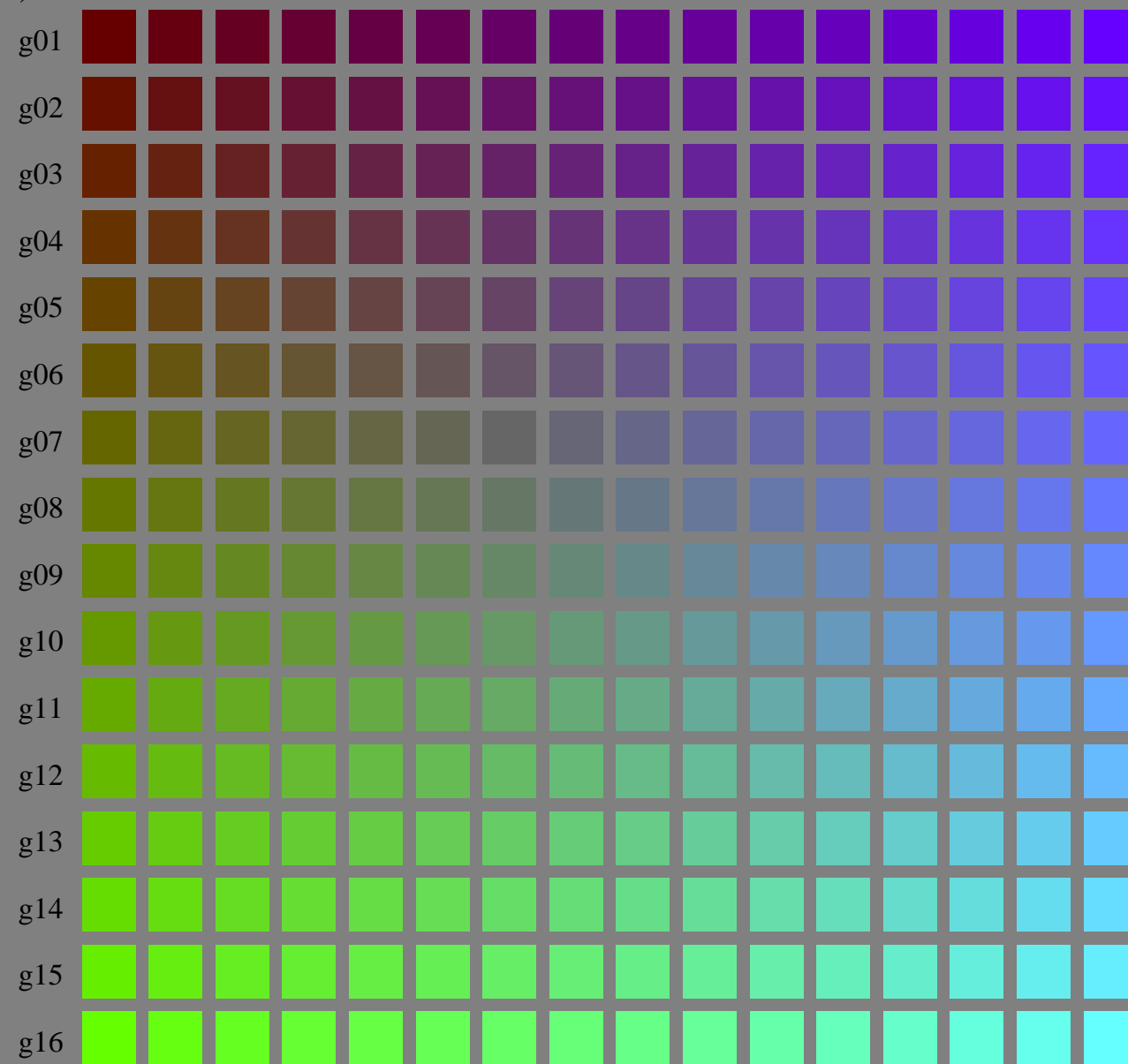
See for similar files: <http://www.ps.bam.de/LE33/>
Technical information: <http://www.ps.bam.de> Version 2.1, io=1,1?

BAM registration: 20050501-LE33/10S/S33E05SP.PS/.PDF
application for measurement of printer systems

BAM material: code=rh4ta
/LE33 Form: 6/16, Serie: 1/1, Page: 6 Page count: 6

($olv3^* = 0.4, l3^*, v3^*$)

($olv3^* = 0.4, 0, 1$)



($olv3^* = 0.4, 1, 0$)

LE330-7, Test chart file with 16x16x16 (=4096) colours; Device dependent colour coordinates $olv3^*$ of ISO/IEC 15775:1999 as input; $r3^* = o3^* = 0.4 = \text{const.}$

BAM-test chart no. LE33; Systems ORS18 and TLS00
4096 (=16x16x16) colours of ISO/IEC 15775:1999

input: $olv3^*$ *setrgbcolor*
output: *Startup (S) data dependend*

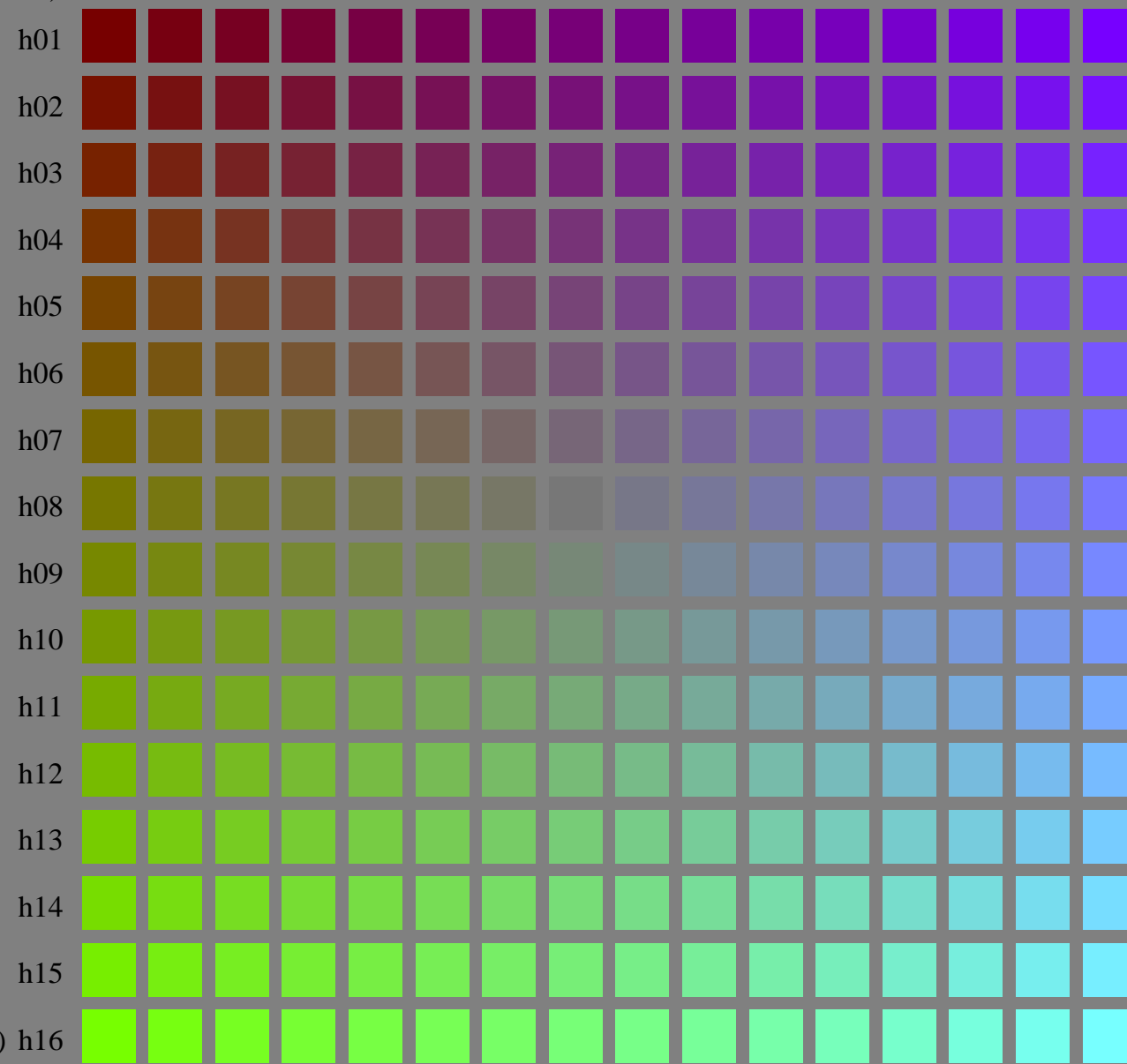
See for similar files: <http://www.ps.bam.de/LE33/>
Technical information: <http://www.ps.bam.de> Version 2.1, io=1,1?

BAM registration: 20050501-LE33/10S/S33E06SP.PS/.PDF
application for measurement of printer systems

BAM material: code=rh4ta
/LE33 Form: 7/16, Serie: 1/1, Page: 7 Page count: 7

($olv3^* = 0.466, l3^*, v3^*$)

($olv3^* = 0.466, 0, 1$)



($olv3^* = 0.466, 1, 0$)

LE330-7, Test chart file with 16x16x16 (=4096) colours; Device dependent colour coordinates $olv3^*$ of ISO/IEC 15775:1999 as input; $r3^* = o3^* = 0.466 = \text{const.}$

BAM-test chart no. LE33; Systems ORS18 and TLS00
4096 (=16x16x16) colours of ISO/IEC 15775:1999

input: $olv3^*$ setrgbcolor
output: Startup (S) data dependend

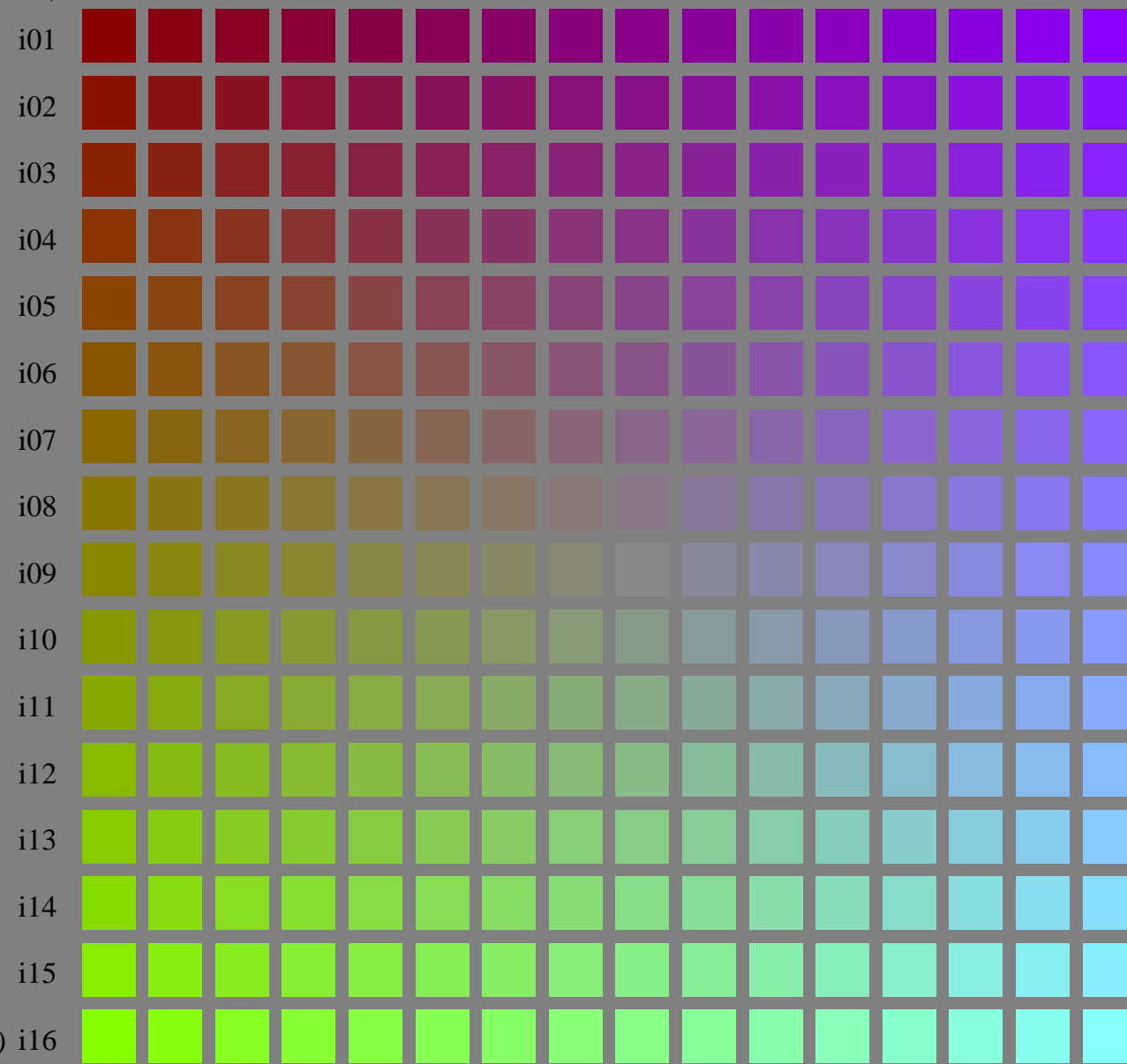
See for similar files: <http://www.ps.bam.de/LE33/>
Technical information: <http://www.ps.bam.de> Version 2.1, io=1,1?

BAM registration: 20050501-LE33/10S/S33E07SP.PS/.PDF
application for measurement of printer systems

BAM material: code=rh4ta
/LE33 Form: 8/16, Serie: 1/1, Page: 8 Page count: 8

($olv3^* = 0.533, l3^*, v3^*$)

($olv3^* = 0.533, 0, 1$)



($olv3^* = 0.533, 1, 0$) i16

LE330-7, Test chart file with 16x16x16 (=4096) colours; Device dependent colour coordinates $olv3^*$ of ISO/IEC 15775:1999 as input; $r3^* = o3^* = 0.533 = \text{const.}$

BAM-test chart no. LE33; Systems ORS18 and TLS00
4096 (=16x16x16) colours of ISO/IEC 15775:1999

input: $olv3^*$ *setrgbcolor*
output: *Startup (S) data dependend*

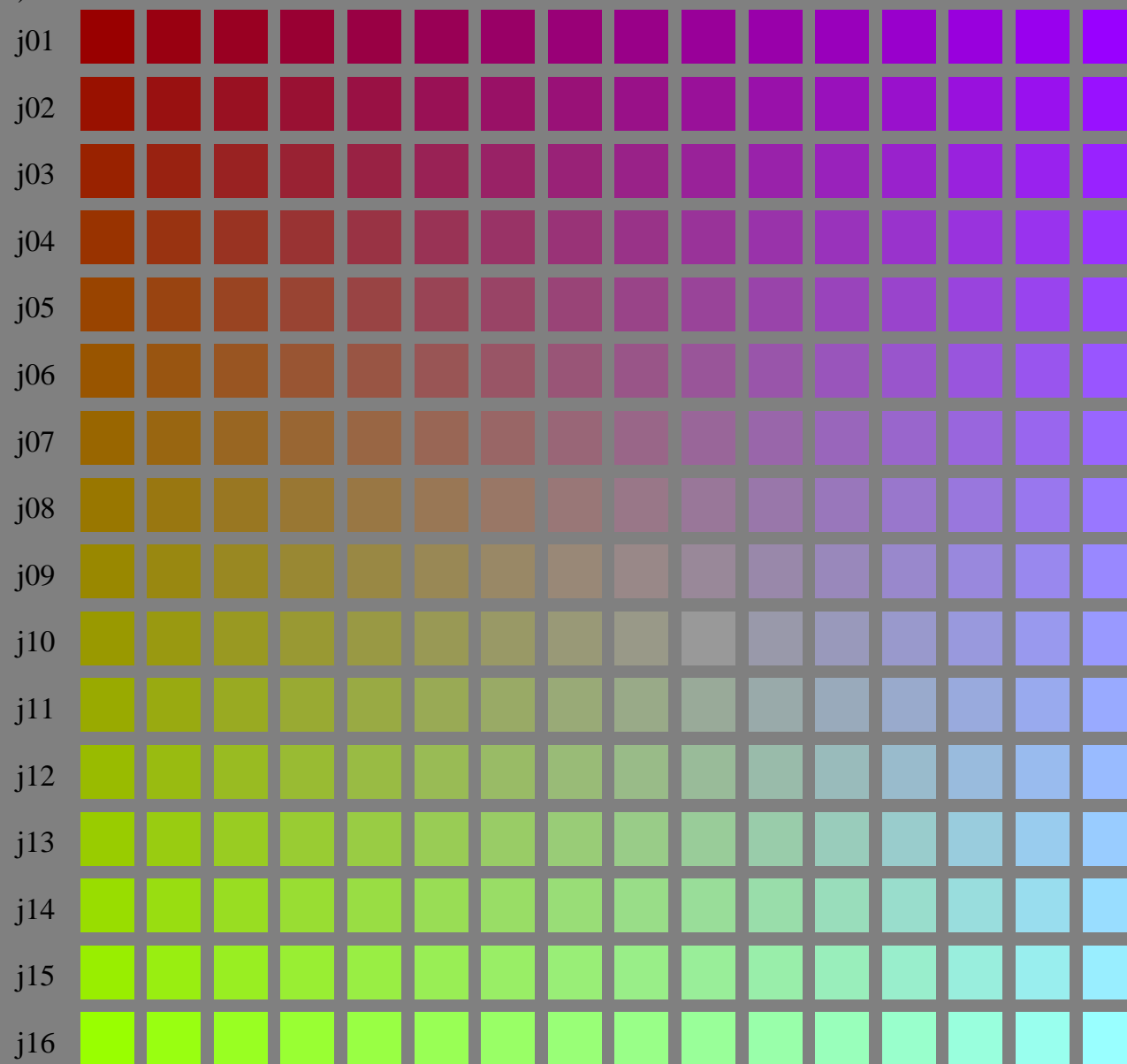
See for similar files: <http://www.ps.bam.de/LE33/>
Technical information: <http://www.ps.bam.de> Version 2.1, io=1,1?

BAM registration: 20050501-LE33/10S/S33E08SP.PS/.PDF
application for measurement of printer systems

BAM material: code=rh4ta
/LE33 Form: 9/16, Serie: 1/1, Page: 9 Page count: 9

(olv3* = 0.6, l3*, v3*)

(olv3* = 0.6, 0, 1)



(olv3* = 0.6, 1, 0)

LE330-7, Test chart file with 16x16x16 (=4096) colours; Device dependent colour coordinates olv3* of ISO/IEC 15775:1999 as input; r3* = o3* = 0.6 = const.

BAM-test chart no. LE33; Systems ORS18 and TLS00
4096 (=16x16x16) colours of ISO/IEC 15775:1999

input: olv3* setrgbcolor
output: Startup (S) data dependend

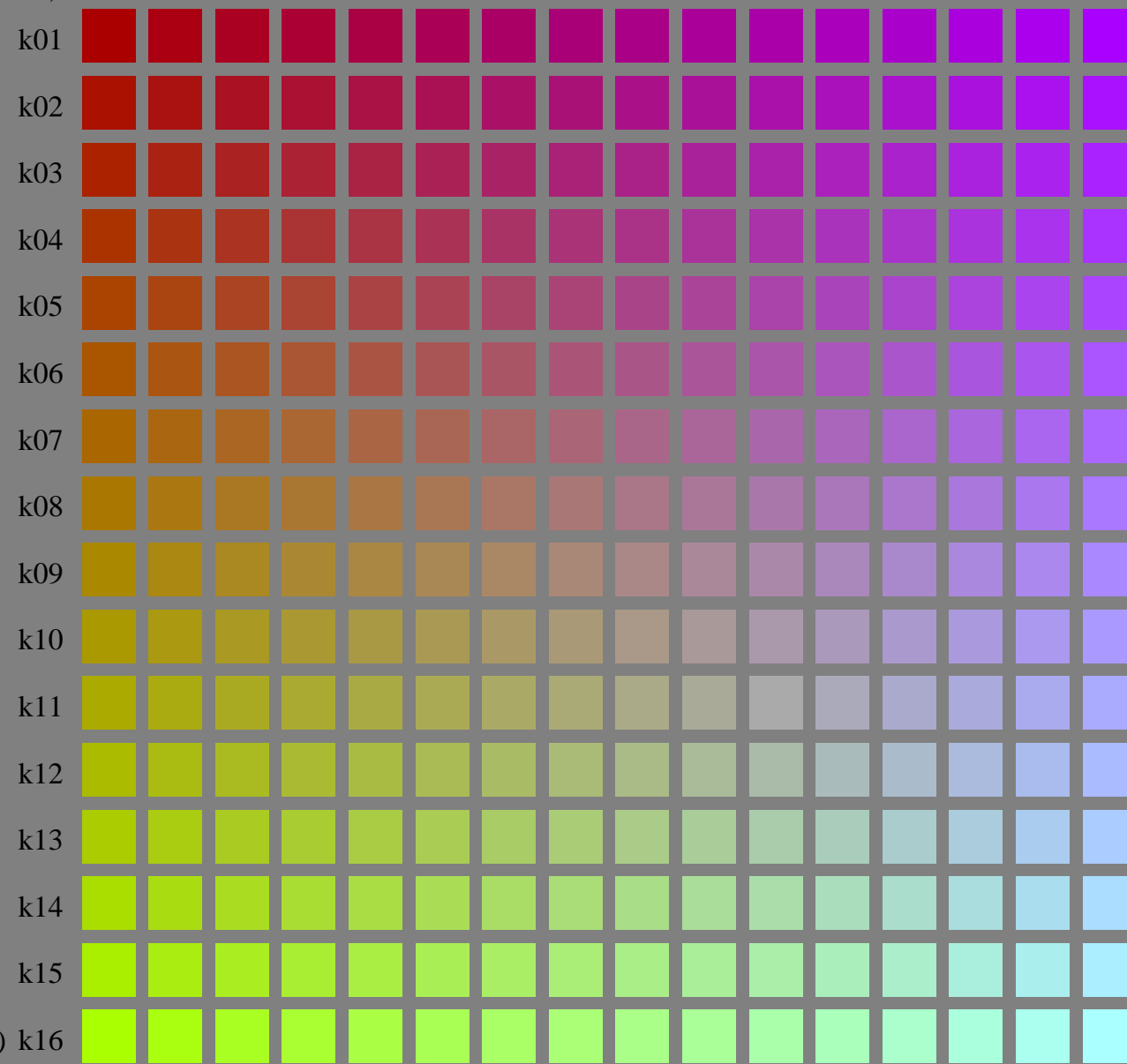
See for similar files: <http://www.ps.bam.de/LE33/>
Technical information: <http://www.ps.bam.de> Version 2.1, io=1,1?

BAM registration: 20050501-LE33/10S/S33E09SP.PS/.PDF
application for measurement of printer systems

BAM material: code=rh4ta
/LE33 Form: 10/16; Serie: 1/1, Page: 10 Page count: 10

($olv3^* = 0.666, 13^*, v3^*$)

($olv3^* = 0.666, 0, 1$)



See for similar files: <http://www.ps.bam.de/LE33/>
Technical information: <http://www.ps.bam.de> Version 2.1, io=1,1?

BAM registration: 20050501-LE33/10S/S33E0ASP.PS/.PDF
application for measurement of printer systems

LE33 Form: 11/16; Serie: 1/1, Page: 11 Page count: 11

BAM material: code=rh4ta

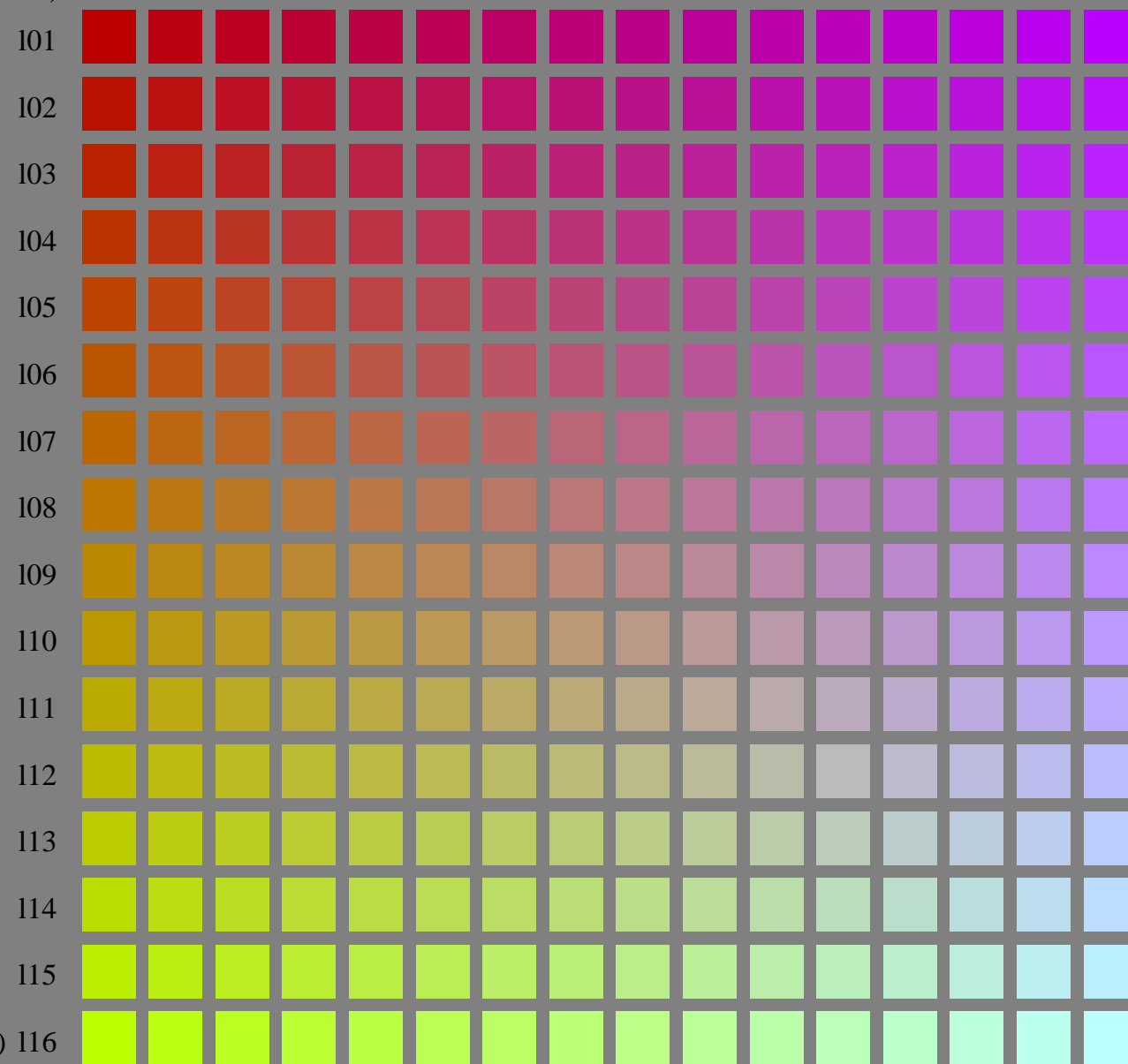
LE330-7, Test chart file with 16x16x16 (=4096) colours; Device dependent colour coordinates $olv3^*$ of ISO/IEC 15775:1999 as input; $r3^* = o3^* = 0.666 = \text{const.}$

BAM-test chart no. LE33; Systems ORS18 and TLS00
4096 (=16x16x16) colours of ISO/IEC 15775:1999

input: $olv3^*$ setrgbcolor
output: Startup (S) data dependend

($olv3^* = 0.733, 13^*, v3^*$)

($olv3^* = 0.733, 0, 1$)



($olv3^* = 0.733, 1, 0$)

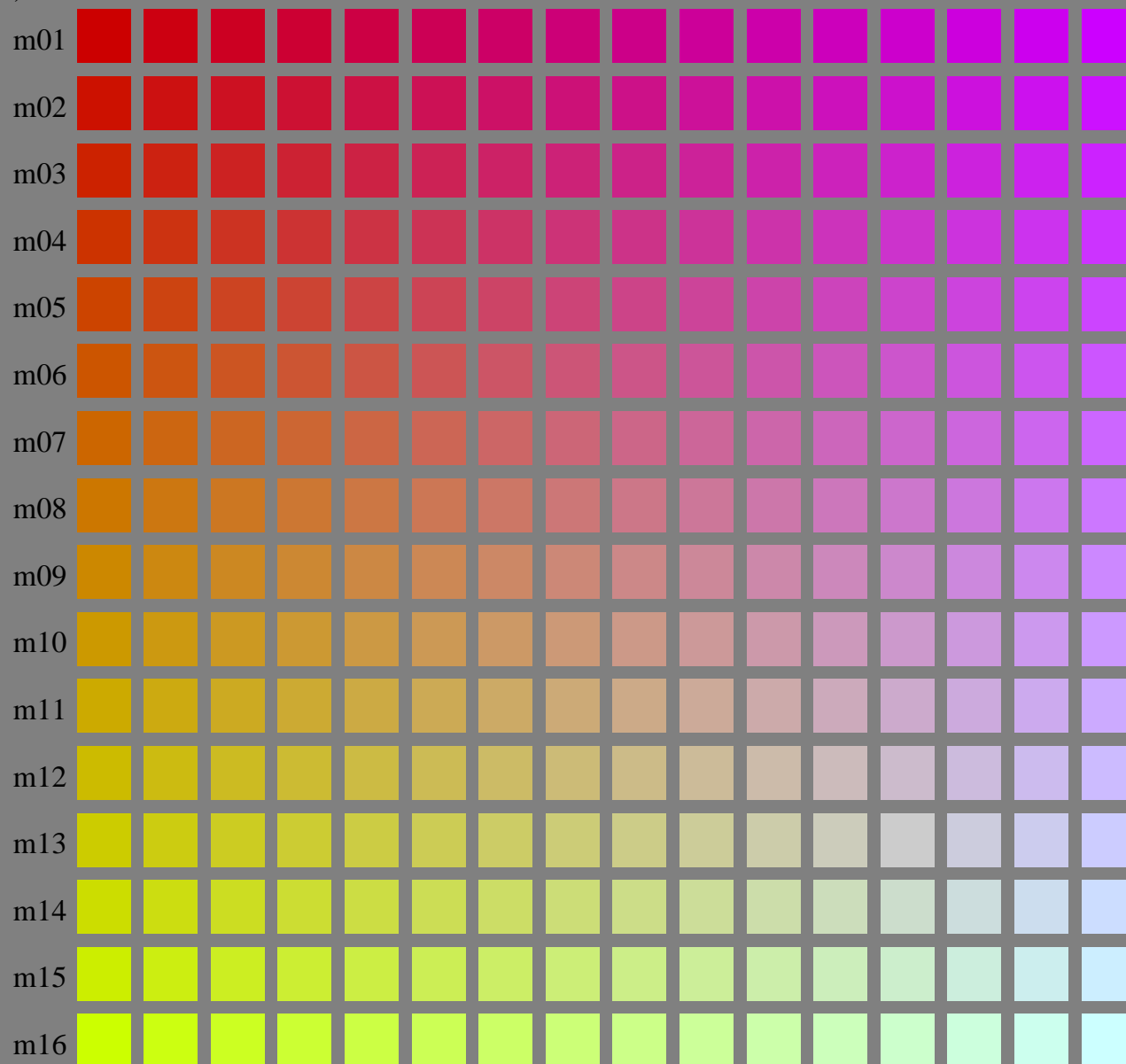
See for similar files: <http://www.ps.bam.de/LE33/>
Technical information: <http://www.ps.bam.de> Version 2.1, io=1,1?

BAM registration: 20050501-LE33/10S/S33E0BSP.PS/.PDF
application for measurement of printer systems

BAM material: code=rh4ta
/LE33/ Form: 12/16; Serie: 1/1, Page: 12, Page count: 12

($olv3^* = 0.8, l3^*, v3^*$)

($olv3^* = 0.8, 0, 1$)



($olv3^* = 0.8, 1, 0$)

LE330-7, Test chart file with 16x16x16 (=4096) colours; Device dependent colour coordinates $olv3^*$ of ISO/IEC 15775:1999 as input; $r3^* = o3^* = 0.8 = \text{const.}$

BAM-test chart no. LE33; Systems ORS18 and TLS00
4096 (=16x16x16) colours of ISO/IEC 15775:1999

input: $olv3^*$ *setrgbcolor*
output: *Startup (S) data dependend*

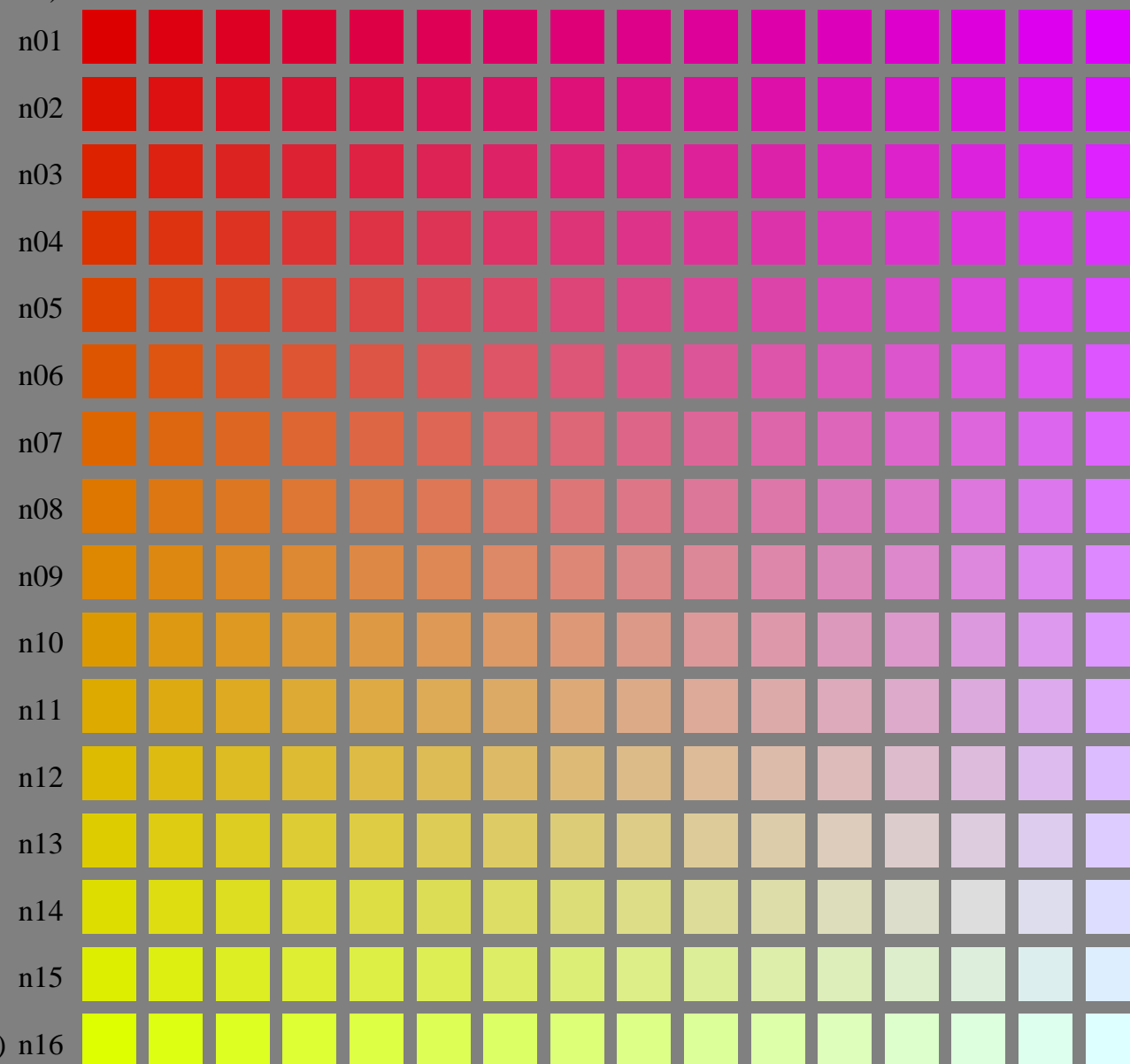
See for similar files: <http://www.ps.bam.de/LE33/>
Technical information: <http://www.ps.bam.de> Version 2.1, io=1,1?

BAM registration: 20050501-LE33/10S/S33E0CSP.PS/.PDF
application for measurement of printer systems

BAM material: code=rh4ta
/LE33/ Form: 13/16; Serie: 1/1, Page: 13 Page count: 13

($olv3^* = 0.866, l3^*, v3^*$)

($olv3^* = 0.866, 0, 1$)



($olv3^* = 0.866, 1, 0$)

LE330-7, Test chart file with 16x16x16 (=4096) colours; Device dependent colour coordinates $olv3^*$ of ISO/IEC 15775:1999 as input; $r3^* = o3^* = 0.866 = \text{const.}$

BAM-test chart no. LE33; Systems ORS18 and TLS00
4096 (=16x16x16) colours of ISO/IEC 15775:1999

input: $olv3^*$ setrgbcolor
output: Startup (S) data dependend

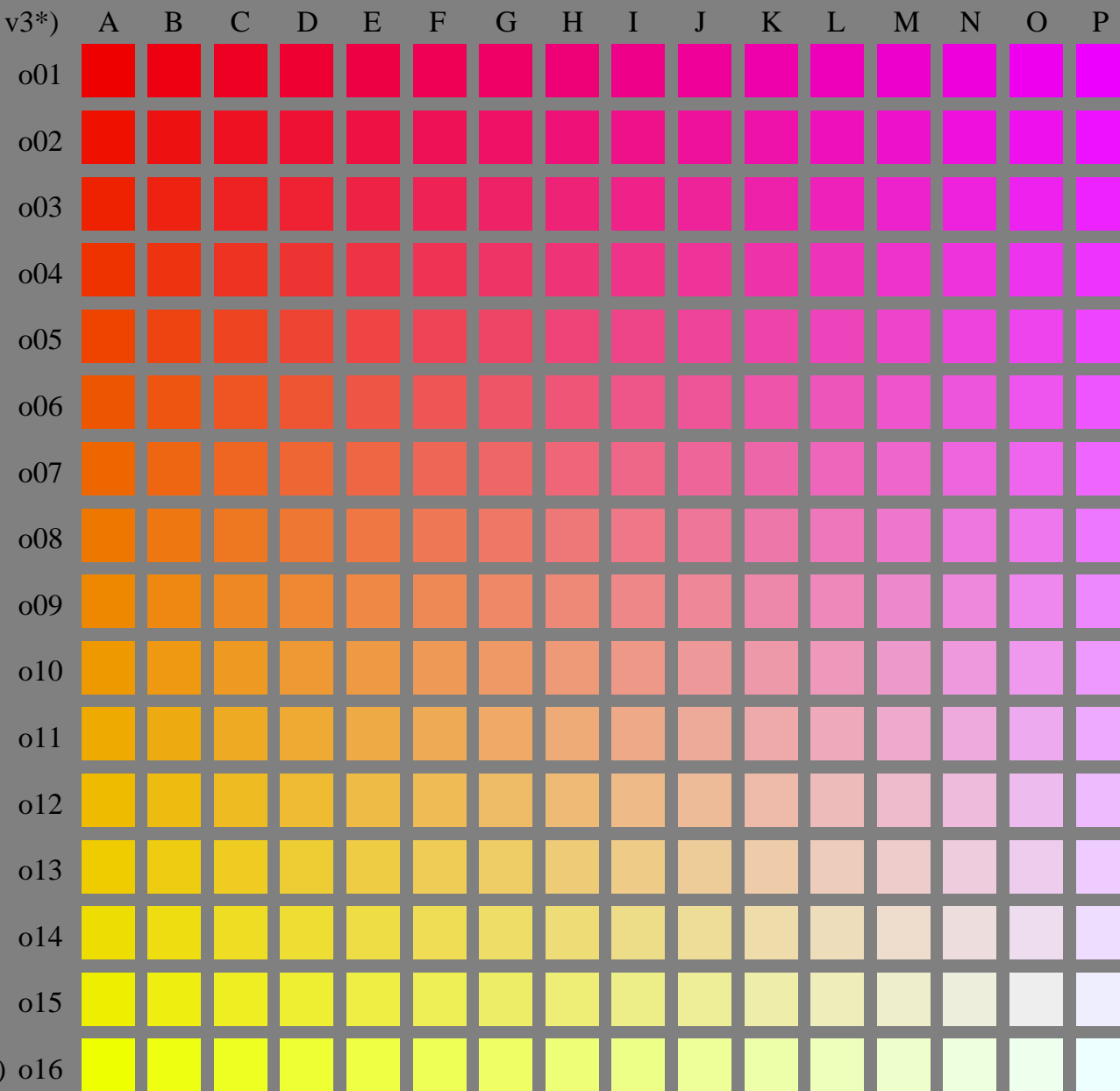
See for similar files: <http://www.ps.bam.de/LE33/>
Technical information: <http://www.ps.bam.de> Version 2.1, io=1,1?

BAM registration: 20050501-LE33/10S/S33E0DSP.PS/.PDF
application for measurement of printer systems
BAM material: code=rh4ta

LE33 Form: 14/16; Serie: 1/1, Page: 14 Page count: 14

($olv3^* = 0.933, l3^*, v3^*$)

($olv3^* = 0.933, 0, 1$)



($olv3^* = 0.933, 1, 0$)

LE330-7, Test chart file with 16x16x16 (=4096) colours; Device dependent colour coordinates $olv3^*$ of ISO/IEC 15775:1999 as input; $r3^* = o3^* = 0.933 = \text{const.}$

BAM-test chart no. LE33; Systems ORS18 and TLS00
4096 (=16x16x16) colours of ISO/IEC 15775:1999

input: $olv3^*$ *setrgbcolor*
output: *Startup (S) data dependend*

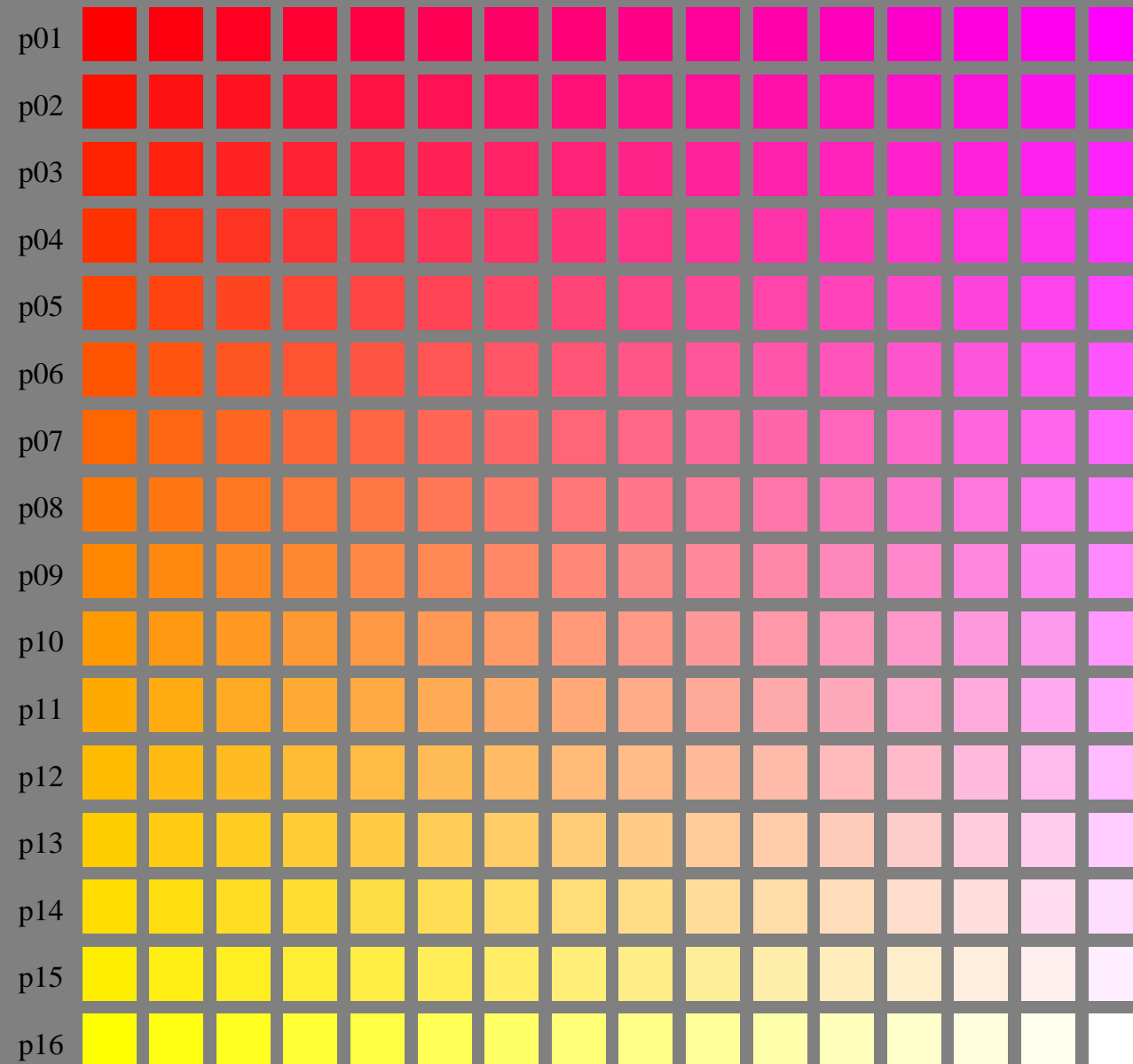
See for similar files: <http://www.ps.bam.de/LE33/>
Technical information: <http://www.ps.bam.de> Version 2.1, io=1,1?

BAM registration: 20050501-LE33/10S/S33E0ESP.PS/.PDF
application for measurement of printer systems

BAM material: code=rh4ta
/LE33 Form: 15/16; Serie: 1/1, Page: 15 Page count: 15

(olv3* = 1.0, l3*, v3*)

(olv3* = 1.0, 0, 1)



(olv3* = 1.0, 1, 0)

LE330-7, Test chart file with 16x16x16 (=4096) colours; Device dependent colour coordinates olv3* of ISO/IEC 15775:1999 as input; r3* = o3* = 1.0 = const.

BAM-test chart no. LE33; Systems ORS18 and TLS00
4096 (=16x16x16) colours of ISO/IEC 15775:1999

input: olv3* setrgbcolor
output: Startup (S) data dependend

See for similar files: <http://www.ps.bam.de/LE33/>
Technical information: <http://www.ps.bam.de> Version 2.1, io=1,1?

BAM registration: 20050501-LE33/10S/S33E0FSP.PS/.PDF
application for measurement of printer systems

BAM material: code=rh4ta
/LE33/ Form: 16/16; Serie: 1/1, Page: 16 Page count: 16