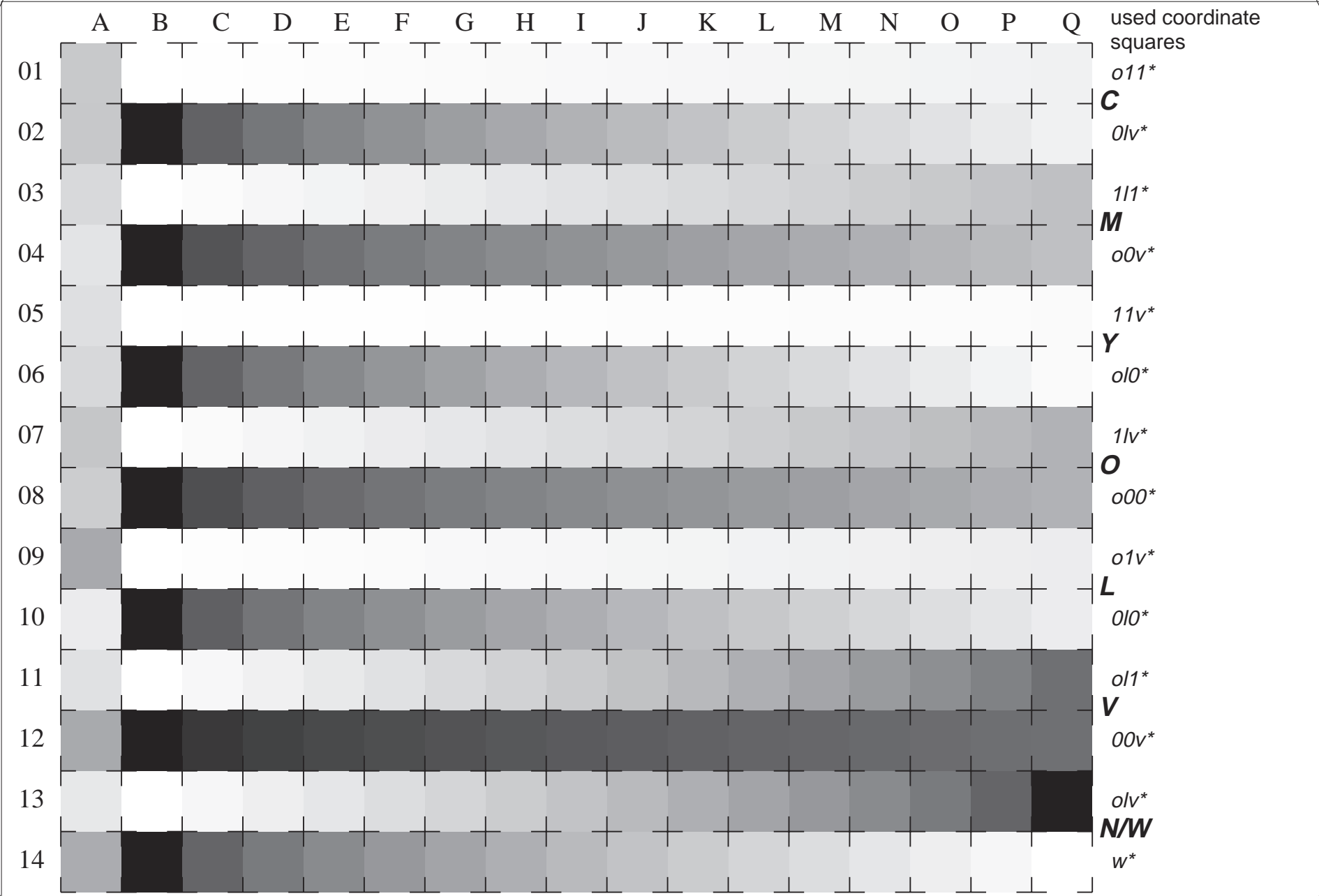


See for similar files: <http://www.ps.bam.de/LE31/LE31.HTM>  
 Information and Order: <http://www.ps.bam.de> Version 2.0, io=1,6; iTLS; oTLS, CIELAB

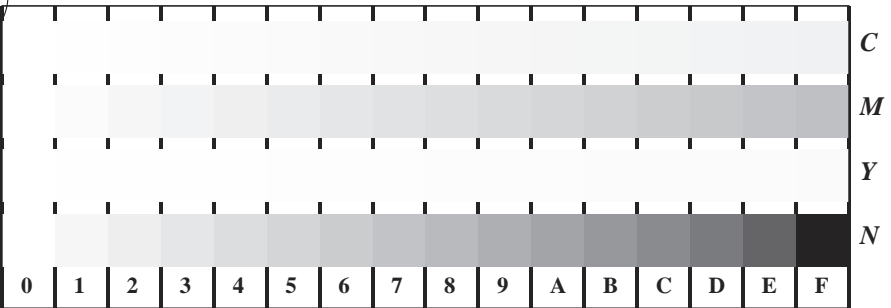
BAM registration: 20030101-LE31/10Q/Q31E06FP.PS/.PDF BAM material: code=tha4ta  
 application for measurement of monitor (Yr=2.5) and printer output



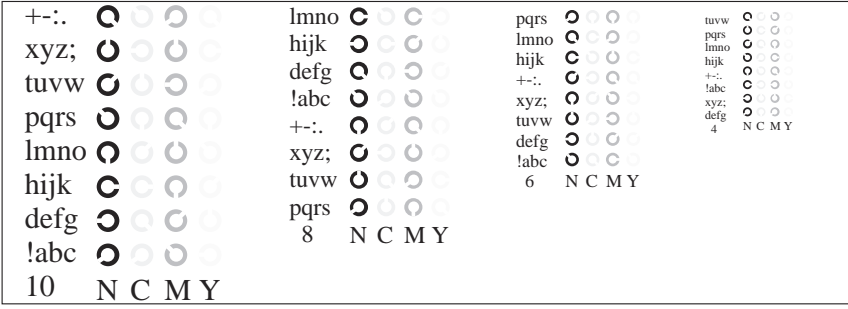
16 equidistant CIELAB steps: C-W, C-N, M-W, M-N, Y-W, Y-N, O-W, O-N, L-W, L-N, V-W, V-N, N-W (*olv\**), W-N (*w\**) and 14 CIE-test colours (left)

Test chart LE31: 16 CIELAB steps of ISO/IEC 15775 input(TLS00): *olv\* setrgbcolor*  
 Chromatic-White, Chromatic-Black, Black-White output(TLS00): *000n\* setcmykcolor*

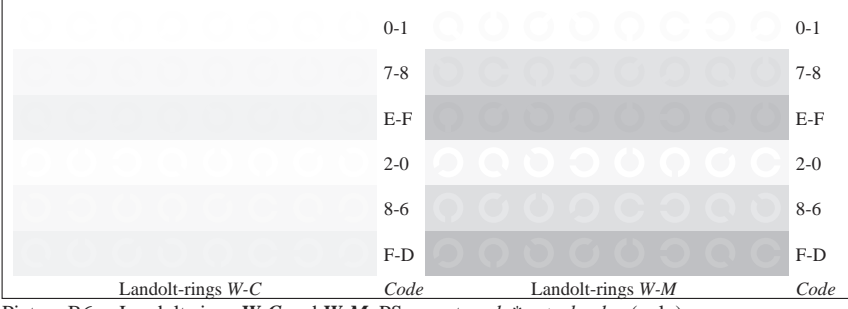
See for similar files: <http://www.ps.bam.de/LE31/LE31.HTM>  
 Information and Order: <http://www.ps.bam.de>  
 Version 2.0, io=1,6; iTLS; oTLS; CIILAB



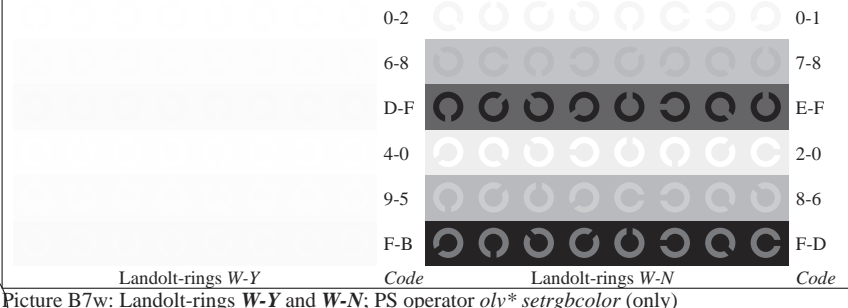
Picture B4w: 16 equidistant steps *W-C*, *W-M*, *W-Y* and *W-N*; PS operator *olv\* setrgbcolor* (only)



Picture B5w: Script and Landolt-rings *N*, *M*, *C* and *Y*; PS operator *olv\* setrgbcolor* (only)

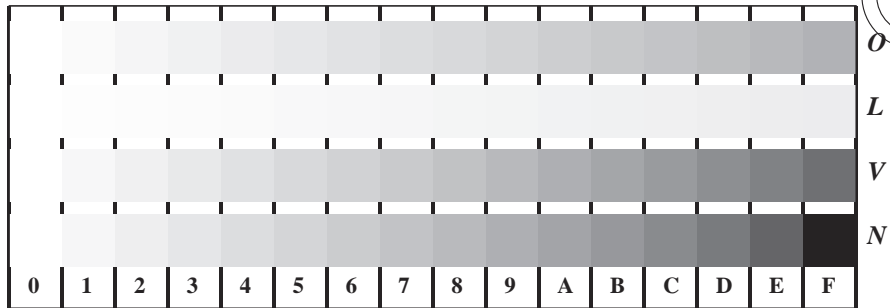


Picture B6w: Landolt-rings *W-C* and *W-M*; PS operator *olv\* setrgbcolor* (only)

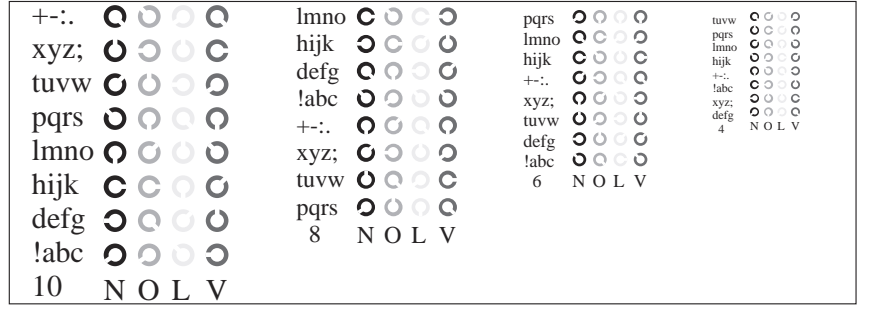


Picture B7w: Landolt-rings *W-Y* and *W-N*; PS operator *olv\* setrgbcolor* (only)

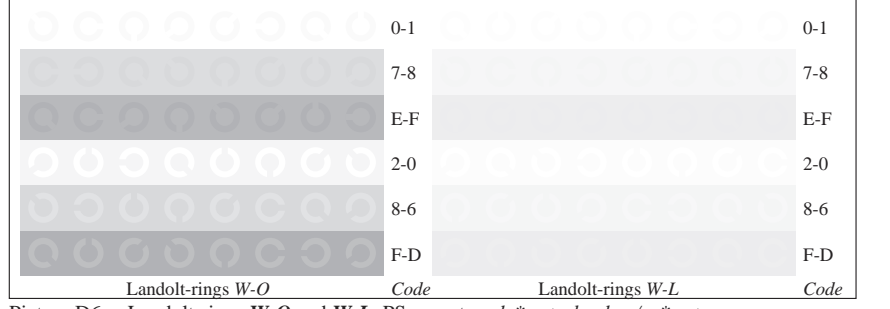
Test chart LE31: 16 CIELAB steps of ISO/IEC 15775  
 Chromatic-White, Chromatic-Black, Black-White



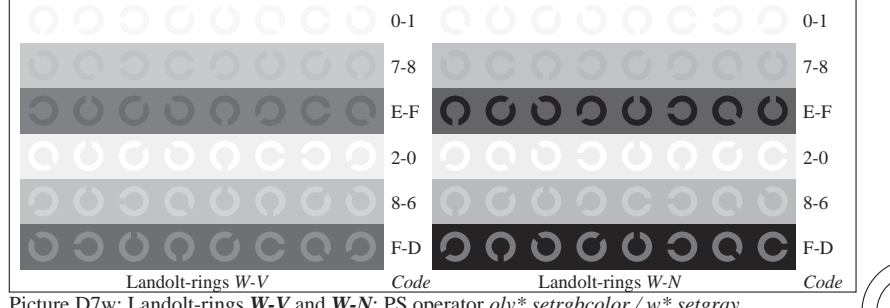
Picture D4w: 16 equidistant steps *W-O*, *W-L*, *W-V* and *W-N*; PS operator *olv\* setrgbcolor / w\* setgray*



Picture D5w: Script and Landolt-rings *N*, *O*, *L* and *V*; PS operator *olv\* setrgbcolor / w\* setgray*



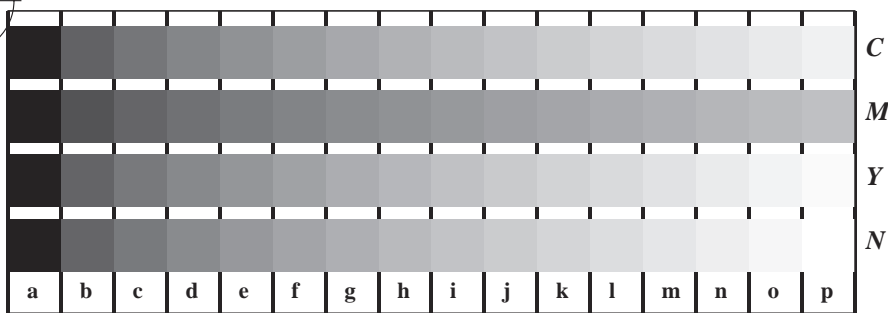
Picture D6w: Landolt-rings *W-O* and *W-L*; PS operator *olv\* setrgbcolor / w\* setgray*



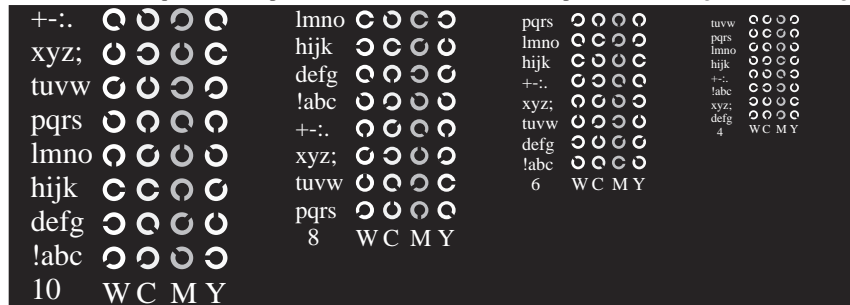
Picture D7w: Landolt-rings *W-V* and *W-N*; PS operator *olv\* setrgbcolor / w\* setgray*

input(TLS00): *olv\* setrgbcolor*  
 output(TLS00): *000n\* setcmykcolor*

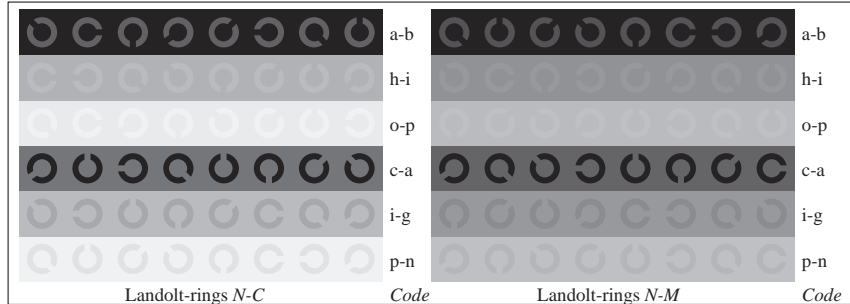
BAM registration: 20030101-LE31/10Q/Q31E16FP.PS/.PDF BAM material: code=th4ta  
 application for measurement of monitor (Yr=2.5) and printer output



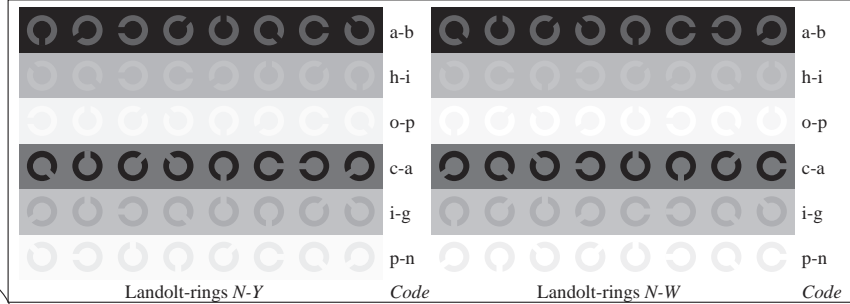
Picture B4n: 16 equidistant steps *N-C*, *N-M*, *N-Y* and *N-W*; PS operator *olv\* setrgbcolor / w\* setgray*



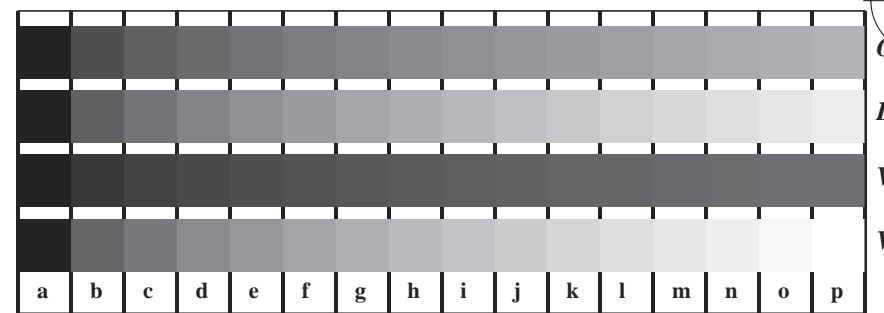
Picture B5n: Script and Landolt-rings *W*, *M*, *C* and *Y*; PS operator *olv\* setrgbcolor / w\* setgray*



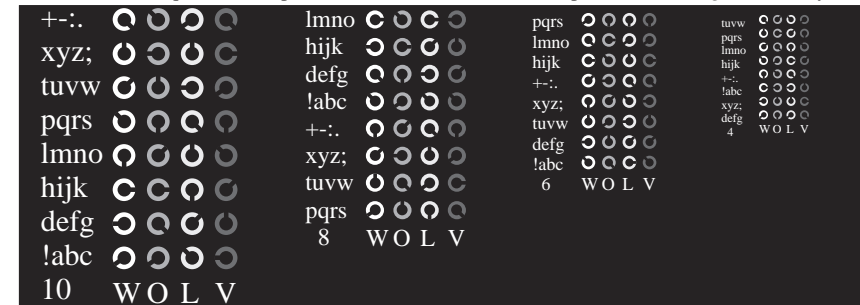
Picture B6n: Landolt-rings *N-C* and *N-M*; Use of PS operator *olv\* setrgbcolor / w\* setgray*



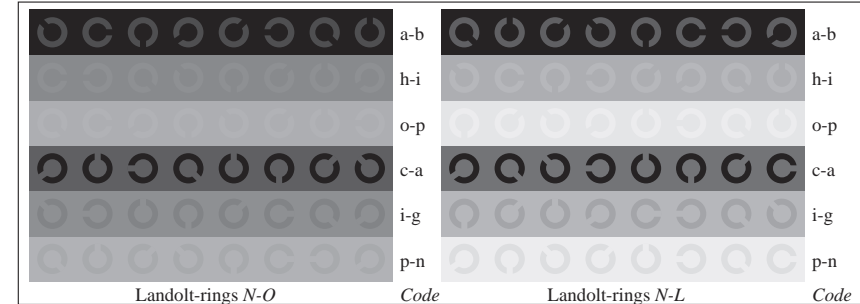
Picture B7n: Landolt-rings *N-Y* and *N-W*; PS operator *cmy0\* / 000n\* setcmykcolor*



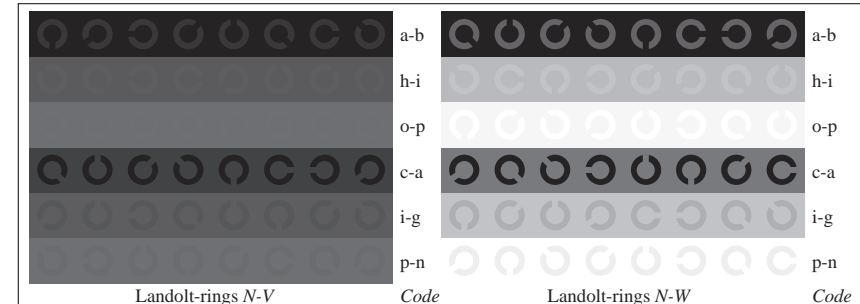
Picture D4n: 16 equidistant steps *N-O*, *N-L*, *N-V* and *N-W*; PS operator *olv\* setrgbcolor* (only)



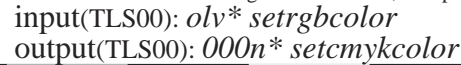
Picture D5n: Script and Landolt-rings *W*, *O*, *L* and *V*; PS operator *olv\* setrgbcolor* (only)



Picture D6n: Landolt-rings *N-O* and *N-L*; Use of PS operator *olv\* setrgbcolor* (only)



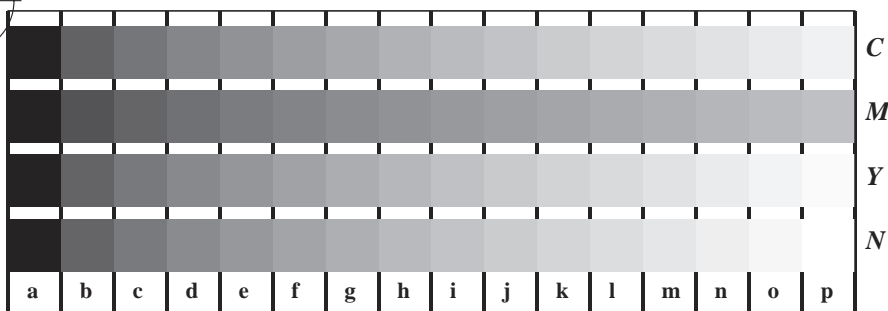
Picture D7n: Landolt-rings *N-V* and *N-W*; PS operator *olv\* setrgbcolor* (only)



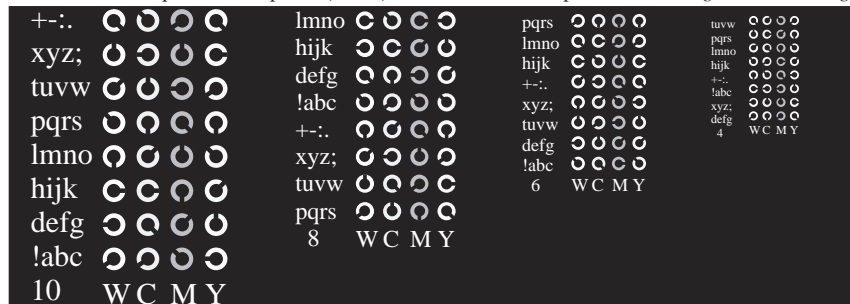
See for similar files: <http://www.ps.bam.de/LE31/LE31.HTM>  
 Information and Order: <http://www.ps.bam.de>

Version 2.0, io=1,6; iTLS; oTLS, CIELAB

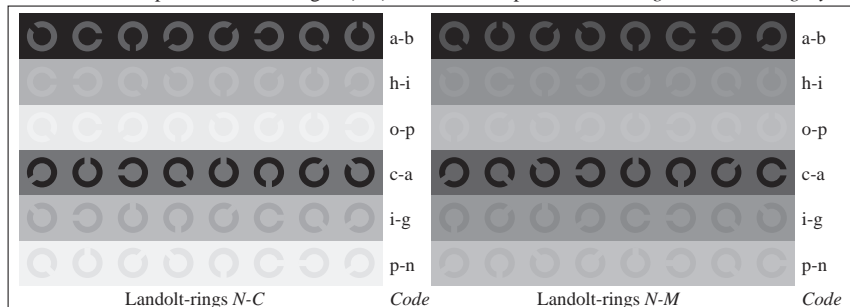
BAM registration: 20030101-LE31/10Q/Q31E26FP.PS/.PDF BAM material: code=th4t4  
 application for measurement of monitor (Yr=2.5) and printer output



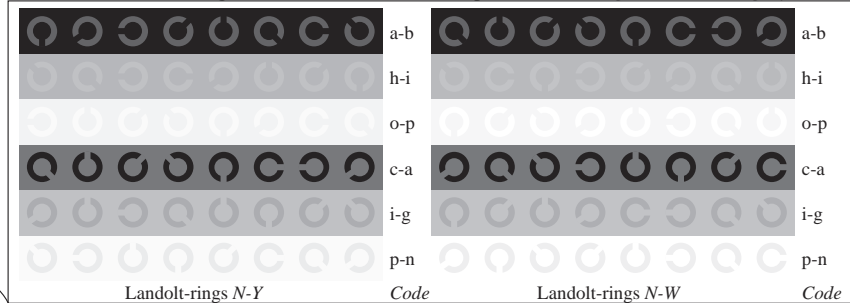
Picture B4n: 16 equidistant steps *N-C*, *N-M*, *N-Y* and *N-W*; PS operator *olv\* setrgbcolor / w\* setgray*



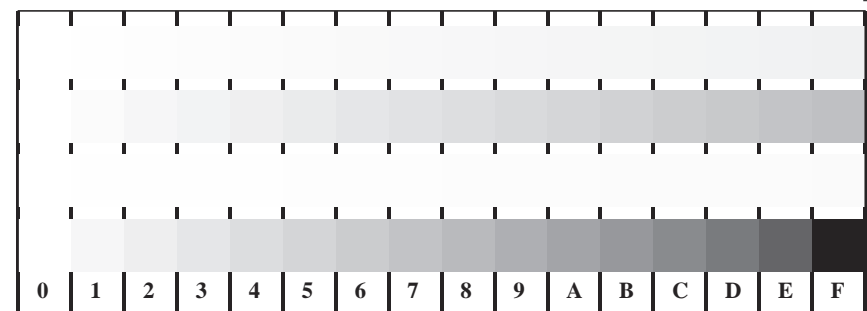
Picture B5n: Script and Landolt-rings *W*, *M*, *C* and *Y*; PS operator *olv\* setrgbcolor / w\* setgray*



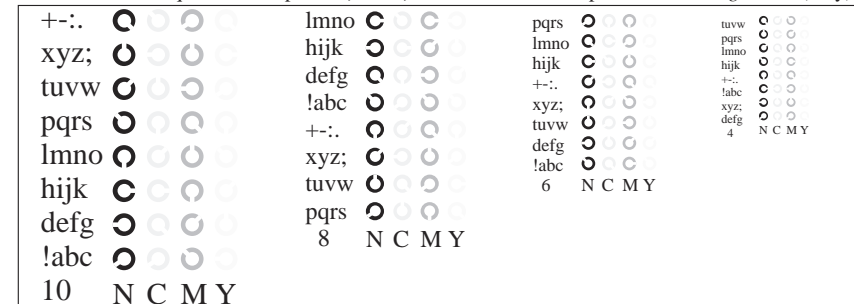
Picture B6n: Landolt-rings *N-C* and *N-M*; Use of PS operator *olv\* setrgbcolor / w\* setgray*



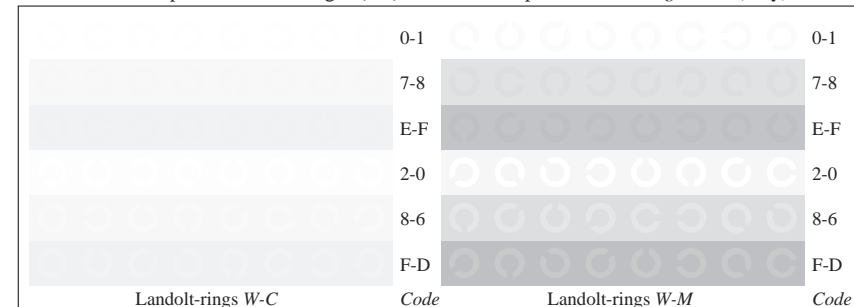
Picture B7n: Landolt-rings *N-Y* and *N-W*; PS operator *olv\* setrgbcolor / w\* setgray*



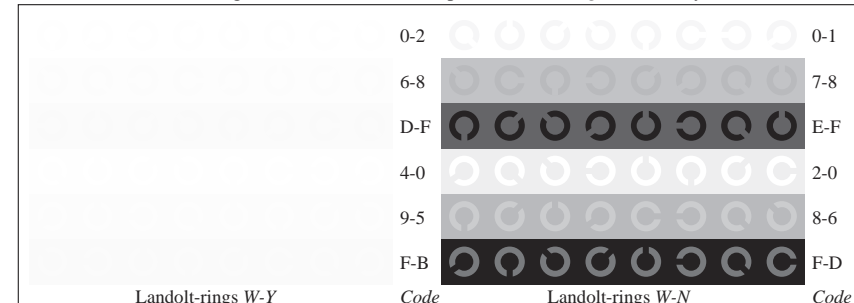
Picture B4w: 16 equidistant steps *W-C*, *W-M*, *W-Y* and *W-N*; PS operator *olv\* setrgbcolor* (only)



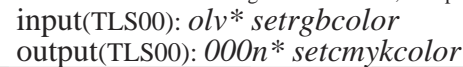
Picture B5w: Script and Landolt-rings *N*, *M*, *C* and *Y*; PS operator *olv\* setrgbcolor* (only)



Picture B6w: Landolt-rings *W-C* and *W-M*; PS operator *olv\* setrgbcolor* (only)



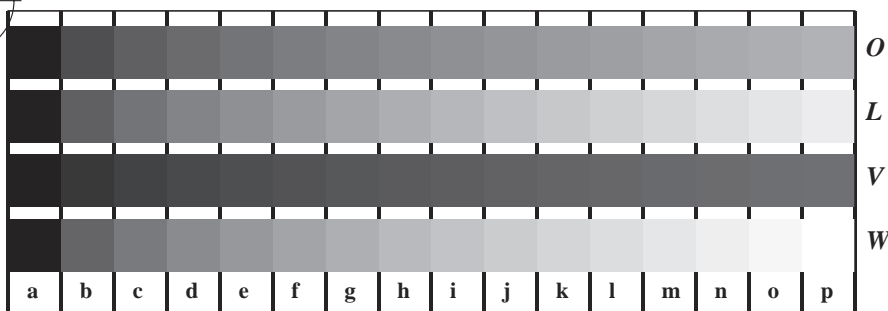
Picture B7w: Landolt-rings *W-Y* and *W-N*; PS operator *olv\* setrgbcolor* (only)



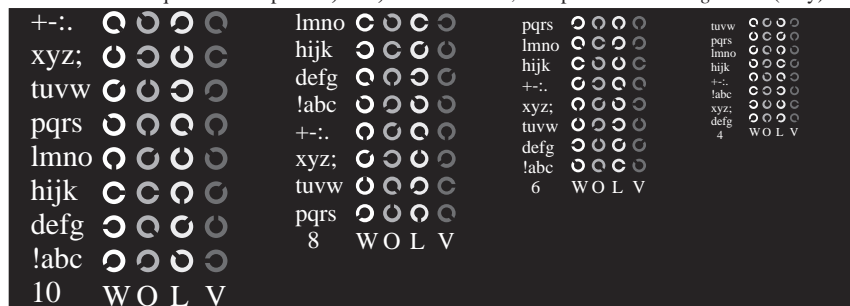
See for similar files: <http://www.ps.bam.de/LE31/LE31.HTM>  
 Information and Order: <http://www.ps.bam.de>

Version 2.0, io=1,6; iTLS; oTLS; CIHLAB

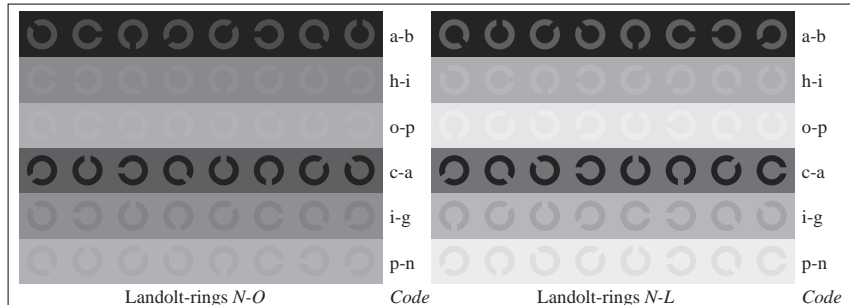
BAM registration: 20030101-LE31/10Q/Q31E36FP.PS/.PDF BAM material: code=th4ta  
 application for measurement of monitor (Yr=2.5) and printer output



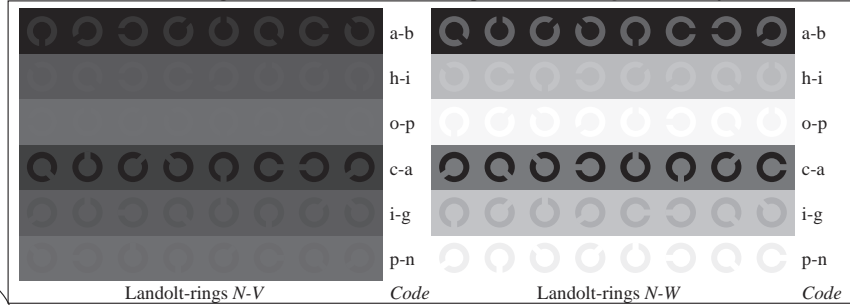
Picture D4n: 16 equidistant steps *N-O*, *N-L*, *N-V* and *N-W*; PS operator *olv\* setrgbcolor* (only)



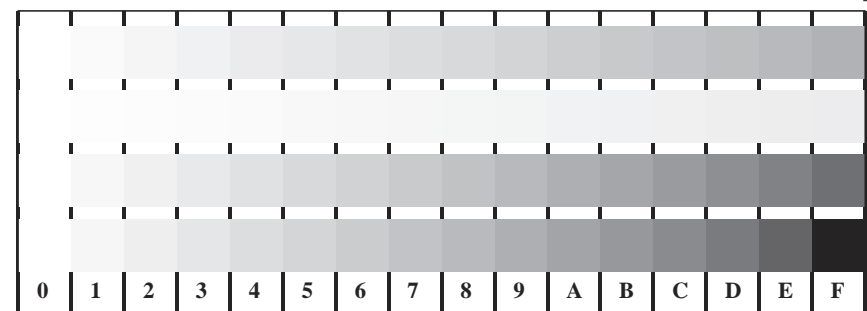
Picture D5n: Script and Landolt-rings *W*, *O*, *L* and *V*; PS operator *olv\* setrgbcolor* (only)



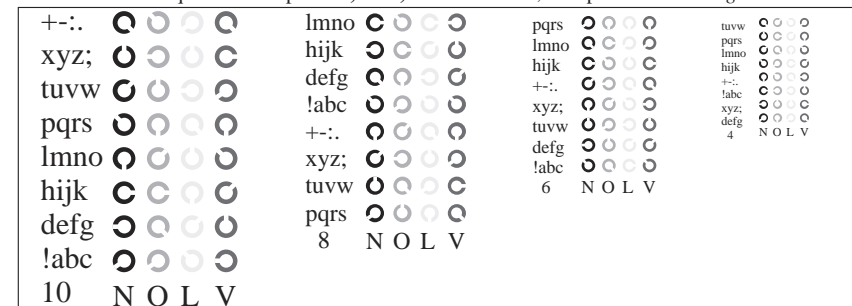
Picture D6n: Landolt-rings *N-O* and *N-L*; Use of PS operator *olv\* setrgbcolor* (only)



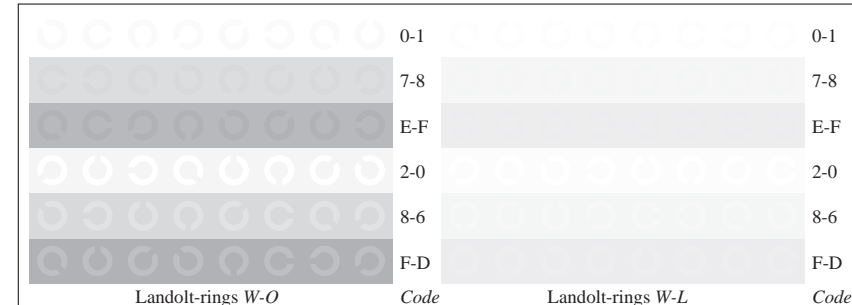
Picture D7n: Landolt-rings *N-V* and *N-W*; PS operator *olv\* setrgbcolor* (only)



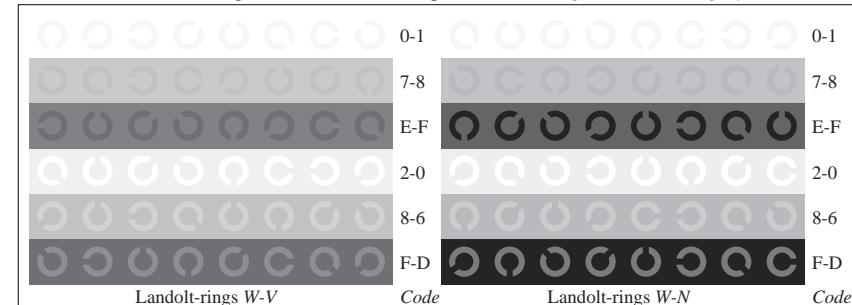
Picture D4w: 16 equidistant steps *W-O*, *W-L*, *W-V* and *W-N*; PS operator *olv\* setrgbcolor / w\* setgray*



Picture D5w: Script and Landolt-rings *N*, *O*, *L* and *V*; PS operator *olv\* setrgbcolor / w\* setgray*



Picture D6w: Landolt-rings *W-O* and *W-L*; PS operator *olv\* setrgbcolor / w\* setgray*



Picture D7w: Landolt-rings *W-V* and *W-N*; PS operator *olv\* setrgbcolor / w\* setgray*

